

EC NO	DATE	REV	DESCRIPTION	CHANGER
CY10-7034	2010/06/24	H	REMOVE SOLDERING AFTER CRIMPING 2.0PIN.	JACKEY

NOTE	WIRING	WIRE COLOR
14P CONN.	ELECTRODE	
1	ELECTRODE A	RED
3	ELECTRODE B	GREEN
8	ELECTRODE C	BLUE
10	ELECTRODE D	NATURE

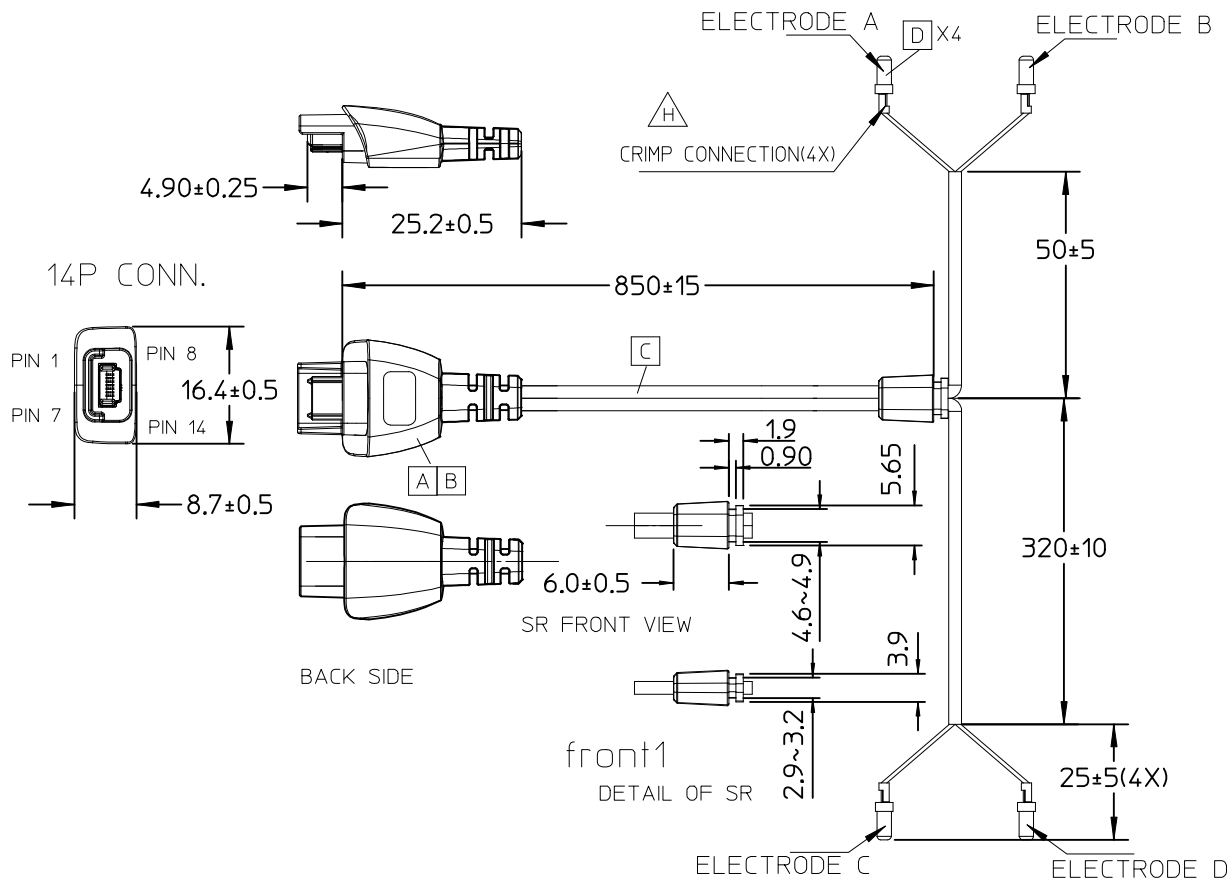
NOTE:

1. OVER MOLD REQUIREMENT

1.1 14P CONNECTOR INNER MOLD WITH TPE RESIN WHITE,
PANTONE Q520-6-3, 90~95 SHORE A

1.2 14P CONNECTOR OVER MOLD WITH TPE RESIN WHITE---
REF PANTONE Q520-6-3, 75-SHORE A

1.3 SR OVER MOLD WITH PVC RESIN WHITE---
REF PANTONE Q520-6-3, 75-SHORE A DIRECTLY.



ENTER DESCRIPTION EC NO: CPG2013-0028 DRWN:FZHANG01 2012/07/05 CHKD:JACKEY 2012/07/05 APPR:XAWANG 2012/07/19	QUALITY SYMBOLS FA=0 FC=0 FP=0	GENERAL TOLERANCES (UNLESS SPECIFIED)		DIMENSION STYLE MM ONLY		SCALE ---	DESIGN UNITS METRIC	THIRD ANGLE PROJECTION
		mm	INCH	DRAWN BY FZHANG01	DATE 2012/07/05	TITLE CARDLECON 14P CONTROL CB 1200-5500 A BMR		
		4 PLACES ± ---	± ---	CHECKED BY PAUL	DATE 2012/07/05			
		3 PLACES ± ---	± ---	APPROVED BY XAWANG	DATE 2012/07/19			
		1 PLACE ± 0.5	± ---			DOCUMENT NO. SD-68764-104		SHEET NO. 1 OF 2
		0 PLACE ± ---	± ---					
		ANGULAR ± 1 °		MATERIAL NO. 687640311				
		DRAFT WHERE APPLICABLE MUST REMAIN WITHIN DIMENSIONS		SIZE A 4		THIS DRAWING CONTAINS INFORMATION THAT IS PROPRIETARY TO MOLEX INCORPORATED AND SHOULD NOT BE USED WITHOUT WRITTEN PERMISSION		

NOTE:

2. PRODUCT ELECTRICAL SPEC. :

- 2.1). DIELECTRIC STRENGTH:300± 30V DC/10 mS;
- 2.2). INSULATION RESISTANCE:5 M Ohms.
- 2.3). CONDUCTOR RESISTANCE:2.6 ohms

3. THIS PRODUCT MUST MEET THE MOLEX CHEMICAL SUBSTANCES SPECIFICATION FOR PRODUCTS (MOLEX PS-40000-5016).

4. PULL FORCE REQUIREMENT:

- 4.1 CABLE AND OVER-MOLDS-3KG LOADING ONE MINUTE WITHOUT BREAK..
- 4.2 CABLE AND SMALLSR-2KG LOADING ONE MINUTE WITHOUT SLIPPAGE..
- 4.3 EXTRACTION FORCE WITH MATING PART FOR 14P CONNECTOR IS 2N MIN.

5. CABLE SR SHOULD PASS THE FLEXING TEST:

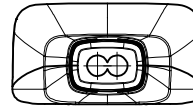
(BENDING ANGLE:±60°; SPEED:20 TIMES/MIN. ;
LOAD:100g; RADIUS:12.7MM;
MIN.7000CYCLES WITHOUT BREAK.

6. THE 14P OVERMOLD SR NEED PASS THE FLEXING TEST:

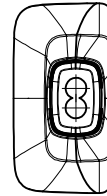
(BENDING ANGLE :±90°; SPEED:20 CYCLES/MIN. ;
LOAD:20g; RADIUS:0.
BENDING 360° IS ONE CYCLE; ;

- 6.1 MIN. 12000 CYCLES WITHOUT BREAK FOR X-DIRECTION.
- 6.2 MIN. 3500 CYCLES WITHOUT BREAK FOR Y-DIRECTION.
- 6.3 THE TEST ABOVE 6.1 & 6.2 CAN'T DO SAME ONE.

7. 2.OPIN MUST BE 0.3KG FOR 1MIN AFTER CRIMPING.



X-DIRECTION BENDING



Y-DIRECTION BENDING

D	2.0 Pin for BMR P-Bronze+Ni		4
C	(2CX2UEW)X2F,UNSH,TPE,WHT;1.80X3.60MM	1190 REF.	
B	0.5 I/O Rec Shield Loose 14Ckt		1
A	0.5 I/O Rec Hsg Assy 14Ckt		1
ITEM	DESCRIPTION	L (MM)	QTY.

ENTER DESCRIPTION EC NO: CPG2013-0028 DRWN:FZHANG01 2012/07/05 CHKD:JACKEY 2012/07/05 APPR:XAWANG 2012/07/19	DESCRIPTION REV	QUALITY SYMBOLS	GENERAL TOLERANCES (UNLESS SPECIFIED)	DIMENSION STYLE MM ONLY	SCALE ---	DESIGN UNITS METRIC	THIRD ANGLE PROJECTION
		$\nabla_F = 0$ $\nabla_F = 0$ $\nabla_F = 0$	mm INCH 4 PLACES ± --- ± --- 3 PLACES ± --- ± --- 2 PLACES ± 0.25 ± --- 1 PLACE ± 0.5 ± --- 0 PLACE ± --- ± ---	DRAWN BY DATE FZHANG01 2012/07/05 CHECKED BY DATE PAUL 2012/07/05 APPROVED BY DATE XAWANG 2012/07/19	TITLE CARDLECON 14P CONTROL CB 1200-5500 A BMR		
		ANGULAR ± 1 ° DRAFT WHERE APPLICABLE MUST REMAIN WITHIN DIMENSIONS	MATERIAL NO. 687640311	DOCUMENT NO. SD-68764-104	SHEET NO. 2 OF 2		
		SIZE A4 THIS DRAWING CONTAINS INFORMATION THAT IS PROPRIETARY TO MOLEX INCORPORATED AND SHOULD NOT BE USED WITHOUT WRITTEN PERMISSION					