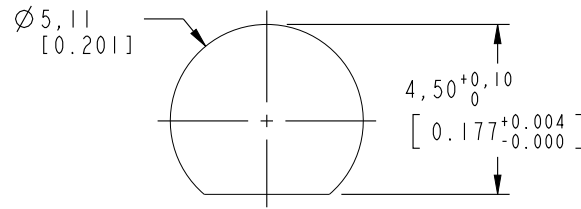


NOTES:

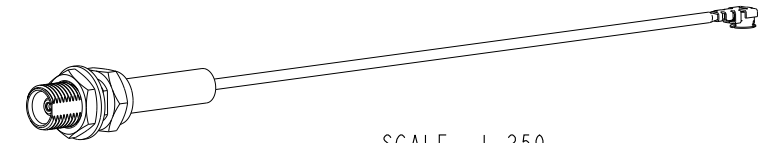
1. MATERIALS AND FINISHES::  
 MCX STR BHD JACK - BRASS, GOLD PLATING  
 CABLE - AMC RA PLUG USING RG 178
2. ELECTRICAL  
 A. IMPEDANCE: 50 OHM
3. PACKAGING  
 A. QUANTITY: SINGLE PACK  
 B. MARKING : BAG TO BE MARKED  
 "AMPHENOL RF, 336503-08-XXXX AND DATE CODE"

THIRD ANGLE PROJ.

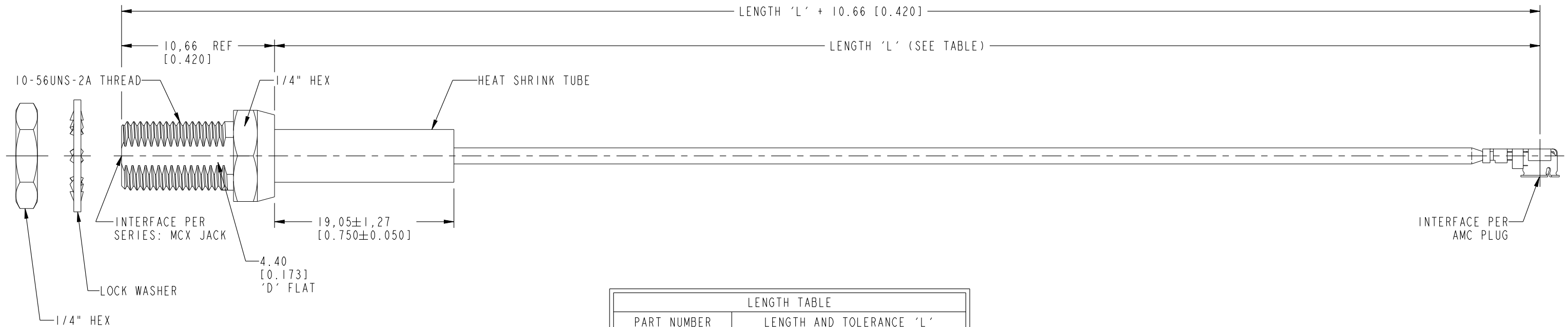
REVISIONS				
REV	DESCRIPTION	DATE	ECN	APPR
--	RELEASE TO MFG.	--	--	--
C	NOTES, FORMAT, BOM TABLE, LENGTH TABLE & POSITION UPDATED, HI-POT 200 WAS 500	28-Feb-19	10723	VR
D	NO CHANGE TO THIS SHEET	09-Apr-19	11203	VR



**RECOMMENDED MOUNTING HOLE DIMENSIONS**



SCALE 1.250



LENGTH TABLE	
PART NUMBER (IMPERIAL)	LENGTH AND TOLERANCE 'L' IN MM (INCHES)
336503-08-0050	50.00 ± 3.81 [1.969 ± 0.150]
336503-08-0100	100.00 ± 3.81 [3.937 ± 0.150]
336503-08-0150	150.00 ± 3.81 [5.906 ± 0.150]
336503-08-0200	200.00 ± 5.08 [7.874 ± 0.200]
336503-08-0250	250.00 ± 5.08 [9.843 ± 0.200]
336503-08-0300	300.00 ± 5.08 [11.811 ± 0.200]

DESIGN REQUIREMENTS:

- |   |  |
|---|--|
| <input type="checkbox"/> FREQUENCY: ---- GHz    | <input checked="" type="checkbox"/> CONTINUITY       |
| <input type="checkbox"/> VSWR: ---- MAX.        | <input checked="" type="checkbox"/> HI-POT: 200 VRMS |
| <input type="checkbox"/> INS. LOSS: ----dB MAX. | <input type="checkbox"/> OTHERS:                     |

**CUSTOMER OUTLINE DRAWING**

ALL OTHER SHEETS ARE FOR INTERNAL USE ONLY

UNLESS OTHERWISE SPECIFIED, DIMENSIONS ARE IN METRIC AND TOLERANCES ARE: <0.5mm ± 0.05mm    0.5 - 6mm ± 0.1mm    6 - 30mm ± 0.2mm    30 - 120mm ± 0.3mm    ANGLES ±1°	MATERIAL	DRAWN	DATE	TITLE	Amphenol RF www.amphenolrf.com
	SEE NOTES	RAJAGOPAL N	15-Oct-15	MCX STR BHD JACK TO AMC RA PLUG USING RG 178 CABLE	
NOTICE - These drawings, specifications, or other data (1) are, and remain the property of Amphenol corp. (2) must be returned upon request; and (3) are confidential and not to be disclosed to any person other than those to whom they are given by Amphenol Corp. the furnishing of these drawings, specifications, or other data by Amphenol Corp., or to any other person to anyone for any purpose is not to be regarded by implication or otherwise in any manner licensing, granting rights to permitting such holder or any other person to manufacture, use or sell any product, process or design, patented or otherwise, that may in any way be related to or disclosed by said drawings, specifications, or other data.	REFERENCE	ENGINEER	DATE	SCALE: 7.0:1.0	DRAWING NO. 336503-08-XXXX
	EAR# 6419	RAJAGOPAL N	15-Oct-15	SHEET 2 OF 2	ITEM NO. 336503-08-XXXX
	REF:	APPROVED	K.CAPOZZI	DATE	DWG SIZE
CONFIGURATION LEVEL: In Work	FINISH	CAD FILE		B	REV D