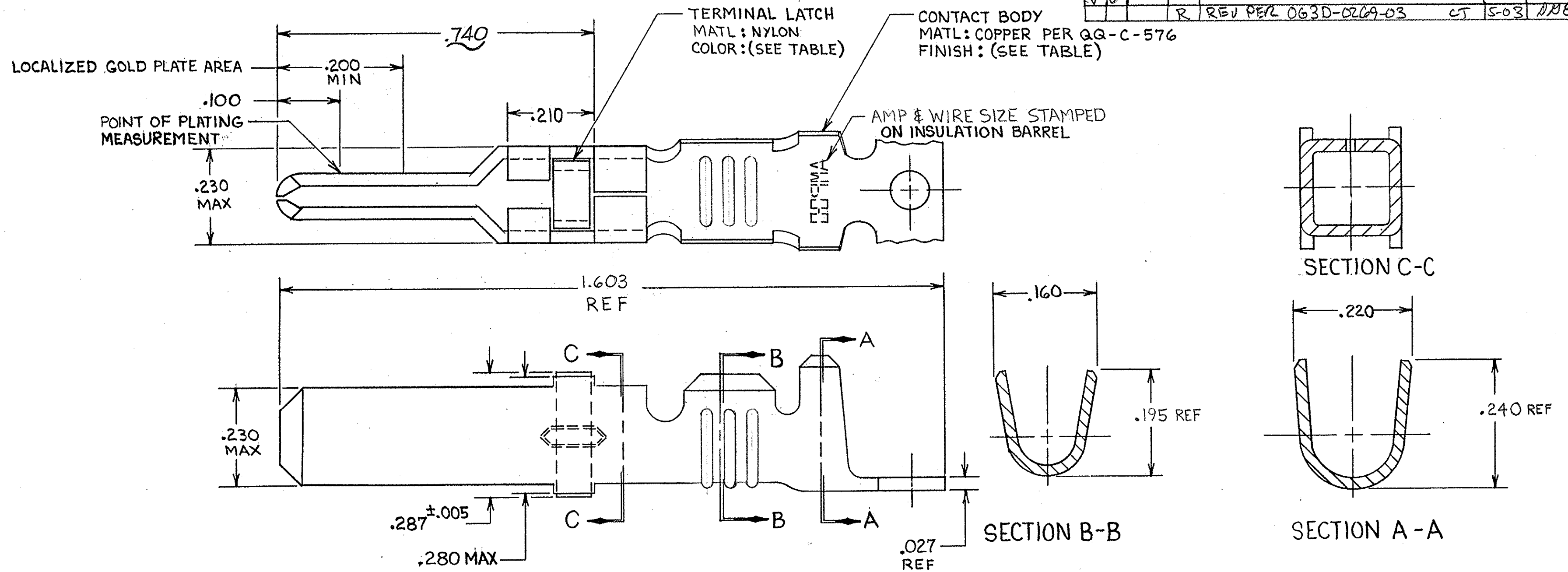


THIS DRAWING IS UNPUBLISHED. RELEASED FOR PUBLICATION, 19
 © COPYRIGHT 19 BY AMP INCORPORATED, HARRISBURG, PA. ALL INTERNATIONAL RIGHTS RESERVED. AMP PRODUCTS MAY BE COVERED BY U.S. AND FOREIGN PATENTS AND/OR PATENTS PENDING.

| REVISIONS | | | | | | |
|-----------|---|------|-----|-----------------------------------|----------|-------------------------|
| P | F | ZONE | LTR | DESCRIPTION | DATE | APPROVED |
| ✓ | ✓ | | L | REDRAWN & REVISED PER ECN R-1451 | 9-30-85 | REP- <i>[Signature]</i> |
| ✓ | ✓ | | M | REV. / ECN R-1946 | 3-4-86 | NPN SLB |
| ✓ | ✓ | | N | OBSOLETE -3 PER R-2760 | 3-4-87 | SDG SLB |
| ✓ | ✓ | | P | ADDED -7 PER DF5552 & NPR 91-0301 | 10-25-91 | PY ABW |
| ✓ | ✓ | | R | REV PER L 063D-0209-03 | 5-03 | DRE |



- 1. REELED FOR USE WITH STANDARD APPLICATORS.
- 2. REELED FOR USE WITH HEAVY DUTY MINI-APPLICATORS.
- 3. PLATED WITH .000100 MIN SILVER PER QQ-S-365.
- 4. PLATED WITH .000015 MIN GOLD PER MIL-G-45204 IN THE LOCALIZED GOLD PLATE AREA, GOLD FLASH ON THE REMAINDER, OVER .000030 MIN NICKEL PER QQ-N-290.
- 5. PLATED WITH .000030 MIN GOLD PER MIL-G-45204 IN THE LOCALIZED GOLD PLATE AREA, GOLD FLASH ON THE REMAINDER, OVER .000030 MIN NICKEL PER QQ-N-290.
- 6. PLATED WITH .000050 MIN 93-7% TIN-LEAD ALLOY OVER .000030 MIN NICKEL PER QQ-N-290.
- 7. WIRE RANGE = 12-16 AWG.
- 8. INSULATION RANGE = .140 - .165 DIA.
- 9. PLATED TIN (NO LEAD) .000050 MIN THK PER ASTM-B-545 OVER NICKEL .000030 MIN THK PER QQ-N-290.

| | | | |
|----------------------|--------|---------------------|----------------|
| BLACK | 9 | 66262-5 | 66256-9 |
| BLACK | 9 | 66262-5 | 66256-8 |
| NATURAL | 3 | 66262-4 | 66256-7 |
| NATURAL | 3 | 66262-4 | 66256-6 |
| BLACK | 6 | 66262-1 | 66256-5 |
| BLACK | 5 | 66262-2 | 66256-4 |
| BLACK | 4 | 66262-3 | 66256-3 |
| BLACK | 5 | 66262-2 | 66256-2 |
| BLACK | 6 | 66262-1 | 66256-1 |
| TERMINAL LATCH COLOR | FINISH | L. P. ASS'Y P/N REF | STRIP ASSY P/N |

| | | | | |
|--|-------------------------------------|--|---|---------------------|
| UNLESS OTHERWISE SPECIFIED DIMENSIONS ARE IN INCHES. TOLERANCES ON: DECIMALS ±.010 ANGLES ± | CONTRACT NO | | AMP INCORPORATED Harrisburg, Pa. 17105 | |
| | DR <i>Rich. Rohbaugh</i> 9-30-85 | | | |
| MATERIAL SEE CALLOUT | CHK <i>J. P. Lawrence</i> 10-25-85 | | NAME MALE TYPE XII GROUND CONTACT STRIP ASSEMBLY | |
| | APPD <i>Rich. Blad</i> 10-25-85 | | SIZE C | |
| FINISH SEE DASH NO | APPD <i>James E. Smith</i> 10-28-85 | | FSCM NO 00779 | DRAWING NO 66256 |
| | DSGN APPD | | SCALE NTS | SHEET |
| OTHER APPD | | | | |