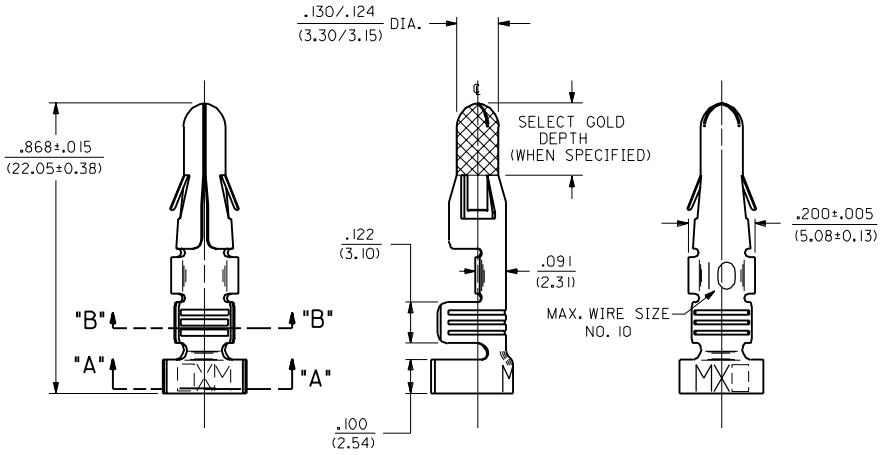
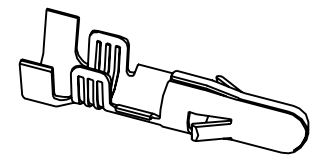
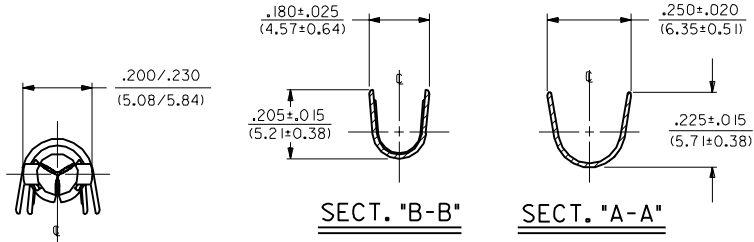


PART NO.	ENG. NO.
18-12-2602	1900-1(P90)IL
18-12-2601	1900-1(P90)I



- NOTES:
- TERMINAL FOR USE WITH .125/(3.17) SERIES HOUSINGS AND WILL ACCEPT 10 THRU 14 AWG WIRE HAVING A .180/(4.57) MAX. DIAMETER INSULATION.
 - INSERTION FORCE: 6.0 LBS. MAX. WHEN TERMINAL IS INSERTED INTO .125/(3.17) DIA. CORE HOLE.
 - PULL OUT FORCE: 30 LBS. MIN. RETENTION IN HOUSING.

FINISH CODES:
 901 HOT TIN DIP .000020/(0.0005) MIN.

MATERIAL NOTES:
 1. CARTRIDGE BRASS, ALLOY #C26000;
 .013/(.33) THICK, SPRING TEMPER

LEGEND

1900-1(*****)

- VERSION
- .180/(4.57) MAX. DIA. INSULATION
- P=PREPLATE
BLANK=POSTPLATE
- FORM
- L=LOOSE
- FINISH CODE
- BLANK=CHAIN

	ADDED ISO VIEW
D2	UCR 1998-0248 WANG 98-05-20
D1	OBS. - (K555) & - (K555)IL ECR US 0379 KC 9/21/95 RW
D	ADD SELECT AREA ECR #UO 0230 3-5-90 RW
C	ADD "NO P.S." PER ECR US 1189 11-27-89 TRM
B	REV. & REDRAWN ECR US 1602 GEP 6-6-89 RW

MFG. SH. REV. LTR. REVISIONS

DIMENSIONS SHOWN METRIC (INCH)	▽=0 ▽=0	REVISE ONLY ON CAD SYSTEM
UNLESS OTHERWISE SPECIFIED TOLERANCES: ANGULAR ± .05° TO	TITLE	CRIMP TERMINAL, MALE, .125/(3.17) DIA 10-14 AWG .180/(4.57) DIA. INSUL.
3 PLACE ± .010 ---	MOLEX INCORPORATED	SHEET NO. DATE
2 PLACE ± .014 ± 0.25	LITSEJLL. 60532 U.S.A.	1 OF 1 6/30/88
1 PLACE --- ± 0.35	PART NO. DRWG. NO.	SEE CHART SD-1900-1*
DRAFT WHERE APPLICABLE MUST REMAIN WITHIN DIMENSIONS	FILE NAME	SIZE
	S19001X1	NO. P.S.
DRWG. BY RAS	SCALE 4 : 1	CP C
CHKD. BY RW	THIS DRAWING CONTAINS INFORMATION THAT IS PROPRIETARY TO MOLEX INC. AND SHOULD NOT BE USED WITHOUT WRITTEN PERMISSION.	