

PRODUCT NO.
92790

PRODUCT NO. *92790-XXX	STAND OFF DIM "M"(mm)	LONG HDR (UPPER DECK)			LONG HDR (LOWER DECK)			HDR COLOR	SHEET NO.	MOUNTING STYLE TO PCB
		HDR+GUIDE 92794-XXX	GUIDE 92791-XXX	HDR 92140-XXX	HDR+GUIDE 92789-XXX	GUIDE 92791-XXX	HDR 92140-XXX			
000	0	000	001	005	000	001	000	BLACK	NO.2	
000LF	0	000LF	001	005LF	000LF	001	000LF			
020	2	020	001	045	020	021	040	BLACK	NO.3	
020LF	2	020LF	001	045LF	020LF	021	040LF			
500	0	500	001	505	500	001	500	NATURAL	NO.4	
500LF	0	500LF	001	505LF	500LF	001	500LF			
520	2	520	001	545	520	021	540	NATURAL	NO.5	
520LF	2	520LF	001	545LF	520LF	021	540LF			

* 92790-X X X XX

- LEAD FREE OPTION
- HDR SOLDER TAIL
- STAND OFF HEIGHT (DIM"MM")
- MOUNT STYLE TO PCB

NONE : NO
LF : YES (SEE NOTE3)

0 : R/A

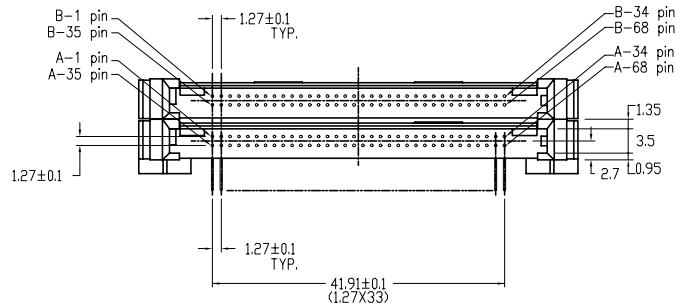
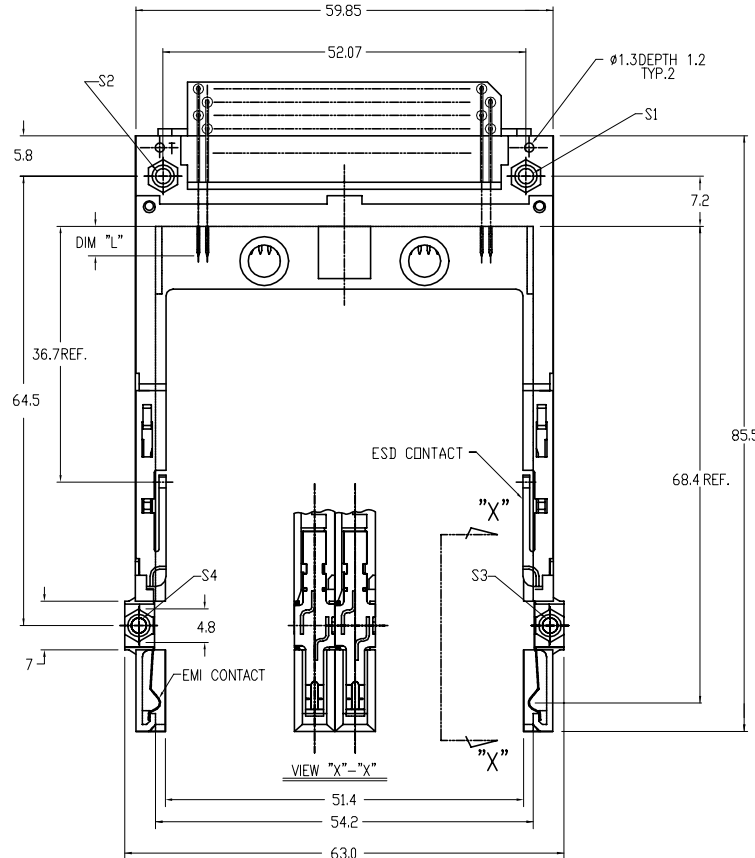
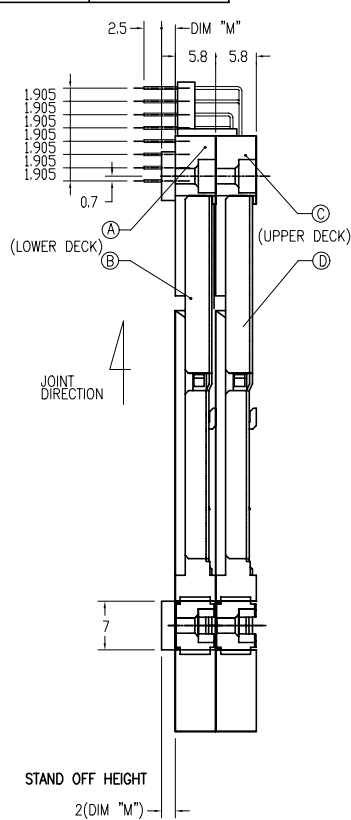
0 : 0mm(NONE)
2 : 2mm

0 : TOP MOUNT
5 : BOTTOM MOUNT

NOTE
1.THIS PRODUCT MEETS EUROPEAN UNION DIRECTIVES AND OTHER COUNTRY REGULATIONS AS DESCRIBED IN GS-22-008.
2.PRODUCT SPEC: 110-263

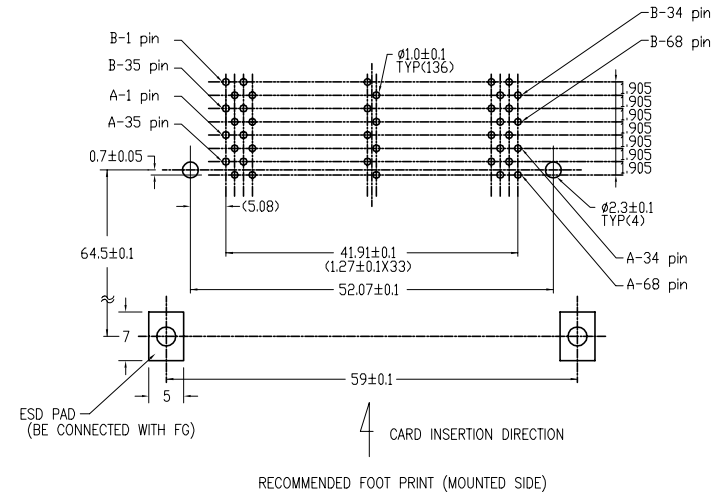
mat'l. code		surface <input checked="" type="checkbox"/> ISD1302		tolerance <input checked="" type="checkbox"/> ISO406 <input checked="" type="checkbox"/> ISO1101		projection		product family PCMCIA	
l t r e c n n o d r		date		tolerances unless otherwise specified		MM		title	
A	J30018	N.T	01/19/93	angle	0.X±0.3	scale:2:1		68P DOUBLE LONG HEADER	
B	50085	M.K	04/14/95	0°±2'	0.XX±0.13			FOR TYPE I/II/III(WITH EMI CLIP)	
C	EX-N-007951	ZK	11/01/11		0.XXX±0.05			dwg no	
D	EX-N-011431	ZK	04/23/12	dr	M.Hasegawa	06/16/05	sheet 1 of 5		size
				engr M.Hasegawa		06/16/05	FCI		92790
				chr			type		Product Customer Drawing
				appd					
sheet index	revision	D	D	D	D	D			
	sheet	1	2	3	4	5			

PRODUCT NO.	FINISH(PIN)
92790-020	SEE NOTE 3-1
92790-020LF	SEE NOTE 3-2



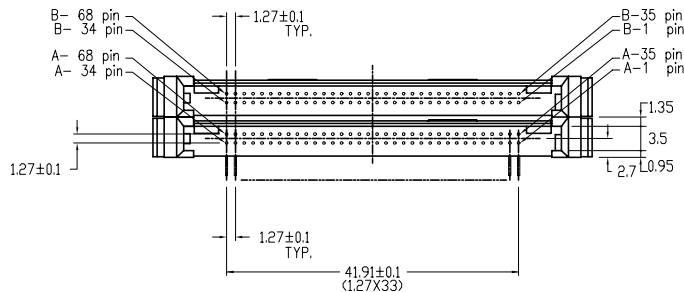
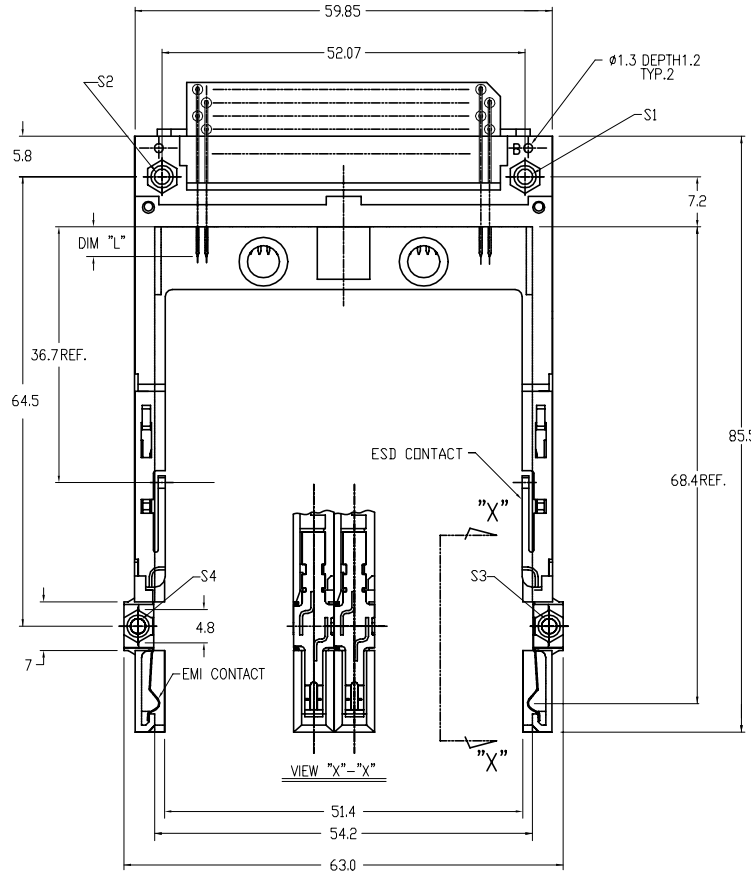
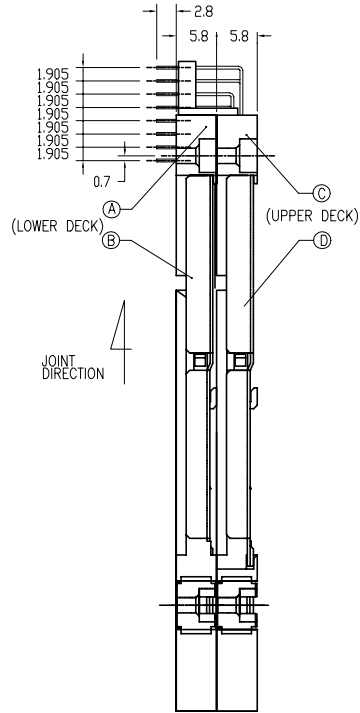
NOTE

- ASSY PROCESS
 - 1.1 TO MOUNT PART ①, ②, ③ ON PWB WITH SCREW (S1,S2) AND SOLDER.
 - 1.2 TO JOINT PART ④, ⑤ INTO PART ①, ② THEN FIX PART ③, ④ WITH 2 SCREWS(S3,S4).
- MATERIAL
 - 2.1 PART ①, ② (HEADER ASSY)
PLASTIC : HIGH TEMPERATURE THERMOPLASTIC UL94V-0 BLACK
PIN : COPPER ALLOY
 - 2.2 PART ③, ④ (GUIDE ASSY)
PLASTIC : HIGH TEMPERATURE THERMOPLASTIC UL94V-0 BLACK
PLATE : STAINLESS
EMI CONTACT : PHOSPHOR BRONZE
- FINISH(PIN)
 - 1 FINISH(PIN)
UNDER PLATING : 0.5 um MIN.Ni
CONTACT AREA : 0.076 µm MIN. GOLD
SOLDER TAIL : 2.5 um MIN. Sn-Pb
 - 2 FINISH(PIN) (FOR-XXXLF)
UNDER PLATING : 0.5 um MIN.Ni
CONTACT AREA : 0.076 µm MIN. GOLD
SOLDER TAIL : 2.5 um MIN. Sn
- | | | | |
|------------|----------|---------|----------------------|
| DIM "L" | 4.25±0.1 | 3.5±0.1 | 5.0±0.1 |
| PIN NUMBER | OTHERS | 36.67 | 1.17, 34, 35, 51, 68 |
- GENERAL TOLERANCE : ±0.3
- SEE SHEET 1 REGARDING COMPONENTS.



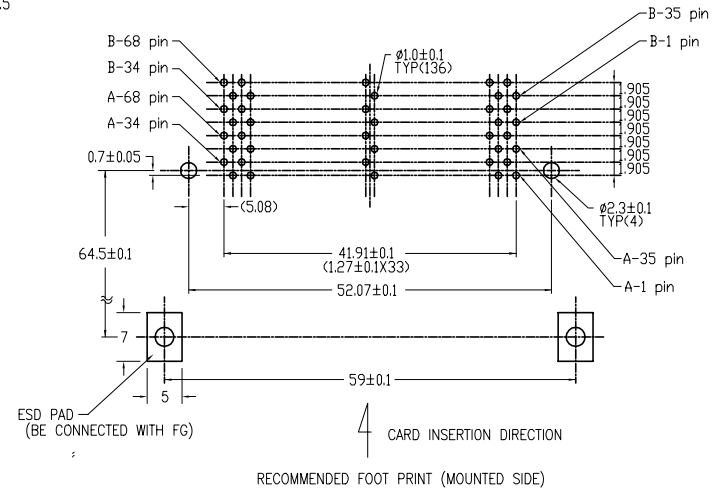
mat'l. code	surface ISO1302	tolerance ISO406 ISO1101	projection	product family PCMCIA
ltr ecn nodr date	tolerances unless otherwise specified		MM	title 68P DOUBLE LONG HEADER FOR TYPE I/II/III(WITH EMI CLIP)
D	angle	0.X±0.3 0.XX±0.13 0'±2"	scale:2:1	dwg no 92790
	dr	M.Hasegawa 06/16/05		sheet 3 of 5 size A4
	engr	M.Hasegawa 06/16/05		type Product Customer Drawing
	chr			
	appd			
sheet index	revision sheet			

PRODUCT NO.	FINISH(PIN)
92790-500	SEE NOTE 3-1
92790-500LF	SEE NOTE 3-2



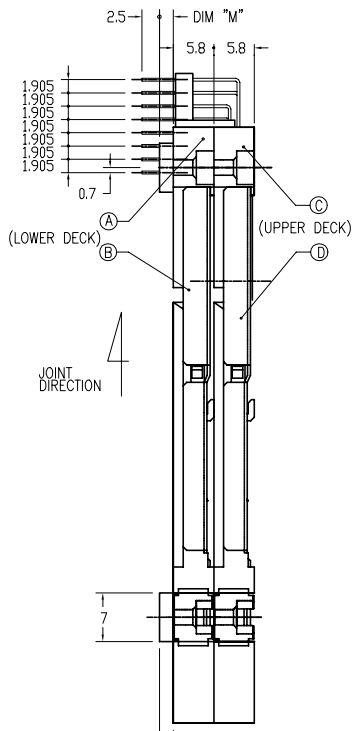
NOTE

- ASSY PROCESS
 - TO MOUNT PART ④, ⑤ ON PWB WITH SCREW (S1,S2) AND SOLDER.
 - TO JOINT PART ⑥, ⑦ INTO PART ④, ⑤ THEN FIX PART ⑥, ⑦ WITH 2 SCREWS(S3,S4).
- MATERIAL
 - PART ④, ⑤ (HEADER ASSY)
 - PLASTIC : HIGH TEMPERATURE THERMOPLASTIC UL94V-0 BLACK
 - PIN : COPPER ALLOY
 - PART ⑥, ⑦ (GUIDE ASSY)
 - PLASTIC : HIGH TEMPERATURE THERMOPLASTIC UL94V-0 BLACK
 - PLATE : STAINLESS
 - EMI CONTACT : PHOSPHOR BRONZE
- FINISH(PIN)
 - FINISH(PIN)
 - UNDER PLATING : 0.5 μ m MIN.Ni
 - CONTACT AREA : 0.076 μ m MIN. GOLD
 - SOLDER TAIL : 2.5 μ m MIN. Sn-Pb
 - FINISH(PIN) (FOR-XXXLF)
 - UNDER PLATING : 0.5 μ m MIN.Ni
 - CONTACT AREA : 0.076 μ m MIN. GOLD
 - SOLDER TAIL : 2.5 μ m MIN. Sn
- | DIM "L" | 4.25±0.1 | 3.5±0.1 | 5.0±0.1 |
|------------|----------|---------|----------------------|
| PIN NUMBER | OTHERS | 36.67 | 1.17, 34, 35, 51, 88 |
- GENERAL TOLERANCE : ±0.3
- SEE SHEET 1 REGARDING COMPONENTS.

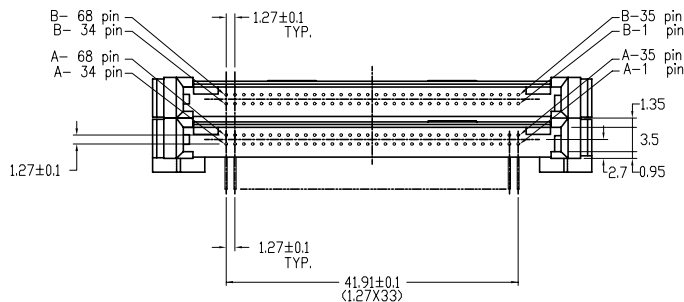
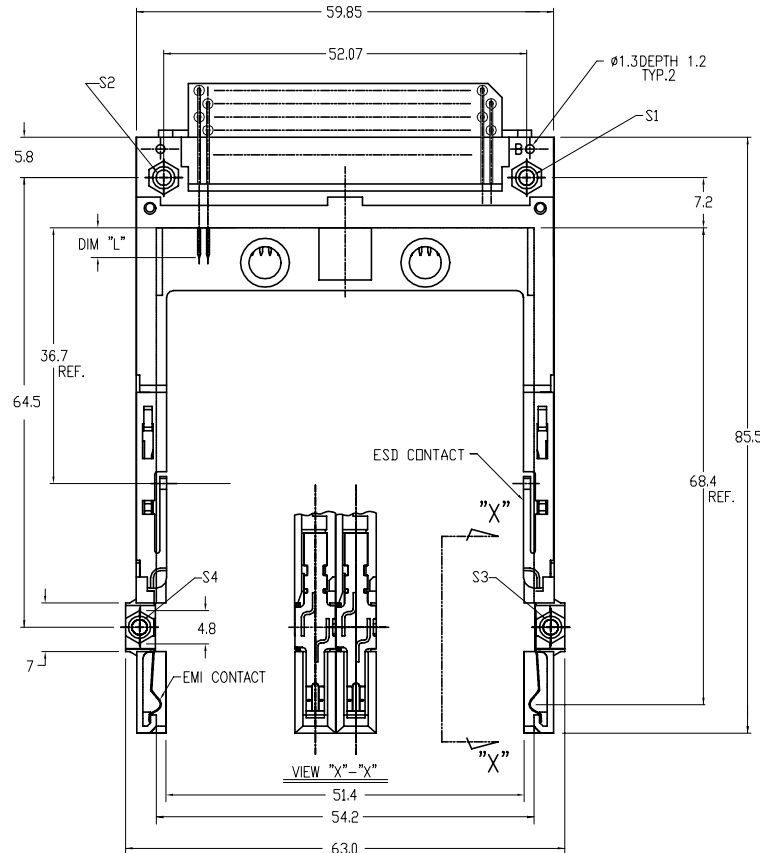


mat'l. code	surface	tolerance	projection	product family
ISD1302	ISD406	ISD1101	PCMCIA	
ltr ecn nodr date	tolerances unless otherwise specified		scale 2:1	title
D	angle	0.X±0.3	MM	68P DOUBLE LONG HEADER
	0°±2'	0.XX±0.13		FOR TYPE I/II/III(WITH EMI CLIP)
		0.XXX±0.05		dwg no
dr	M.Hasegawa	06/16/05		sheet 4 of 5
engr	M.Hasegawa	06/16/05		size
chr				A4
appd				type
sheet index	revision sheet			Product Customer Drawing

PRODUCT NO.	FINISH(PIN)
92790-520	SEE NOTE 3-1
92790-520LF	SEE NOTE 3-2



STAND OFF HEIGHT
2 (DIM "M")



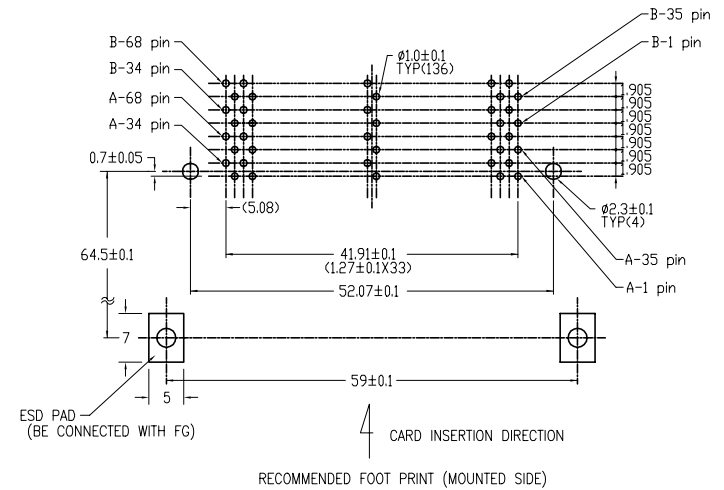
NOTE

- ASSY PROCESS
 - TO MOUNT PART (A), (C), (D) ON PWB WITH SCREW (S1,S2) AND SOLDER.
 - TO JOINT PART (B), (E) INTO PART (A), (C) THEN FIX PART B, D WITH 2 SCREWS(S3,S4).
- MATERIAL
 - PART (A), (C) (HEADER ASSY)
PLASTIC : HIGH TEMPERATURE THERMOPLASTIC UL94V-0 BLACK
PIN : COPPER ALLOY
 - PART (B), (D) (GUIDE ASSY)
PLASTIC : GUIDE HIGH TEMPERATURE THERMOPLASTIC UL94V-0 BLACK
PLATE : STAINLESS
EMI CONTACT : PHOSPHOR BRONZE
- FINISH(PIN)
 - FINISH(PIN)
UNDER PLATING : 0.5 um MIN.Ni
CONTACT AREA : 0.076 um MIN. GOLD
SOLDER TAIL : 2.5 um MIN. Sn-Pb
 - FINISH(PIN) (FOR-XXXXLF)
UNDER PLATING : 0.5 um MIN.Ni
CONTACT AREA : 0.076 um MIN. GOLD
SOLDER TAIL : 2.5 um MIN. Sn

DIM "L"	4.25±0.1	3.5±0.1	5.0±0.1
PIN NUMBER	OTHERS	36.67	1-17,34 35,51,68

GENERAL TOLERANCE : ±0.3

SEE SHEET 1 REGARDING COMPONENTS.



RECOMMENDED FOOT PRINT (MOUNTED SIDE)

mat'l. code	surface ISO1302	tolerance ISO406 ISO1101	projection MM	product family PCMCIA
l/tecn nodr date	tolerances unless otherwise specified		scale:2:1	title 68P DOUBLE LONG HEADER FOR TYPE I/II/III(WITH EMI CLIP)
D	angle 0°±2'	0.X±0.3 0.XX±0.13 0.XXX±0.05	MM	dwg no 92790
	dr M.Hasegawa	06/16/05	FCI	sheet 5 of 5 size A4
	engr M.Hasegawa	06/16/05		type Product Customer Drawing
sheet index	revision sheet			