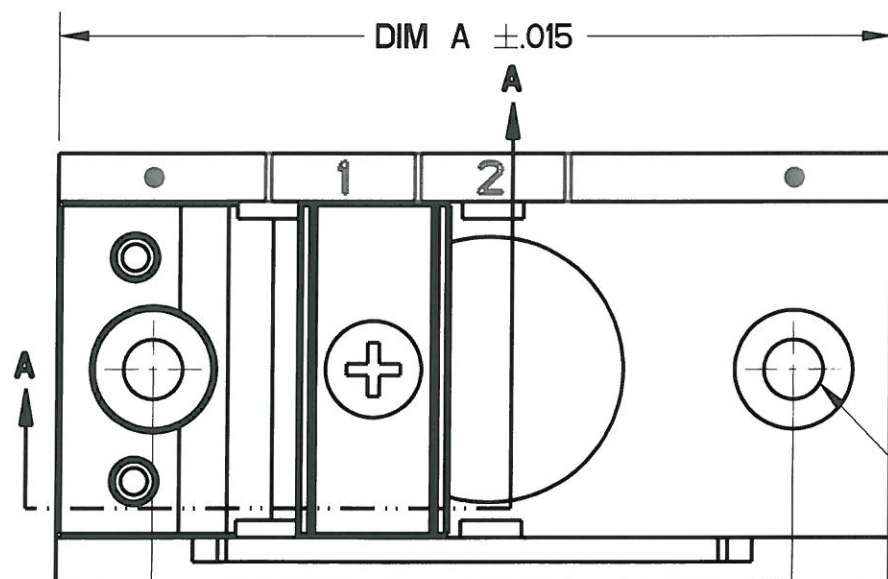
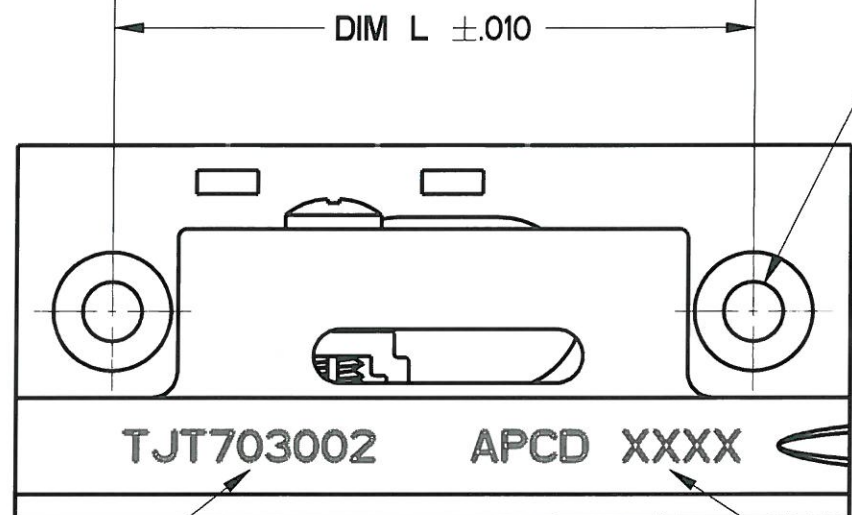


REV	ECN	APP'D
A	6689	JT 4/20/11



Ø.154 MOUNTING HOLES  
CSK 82° X .307 DIA  
4X

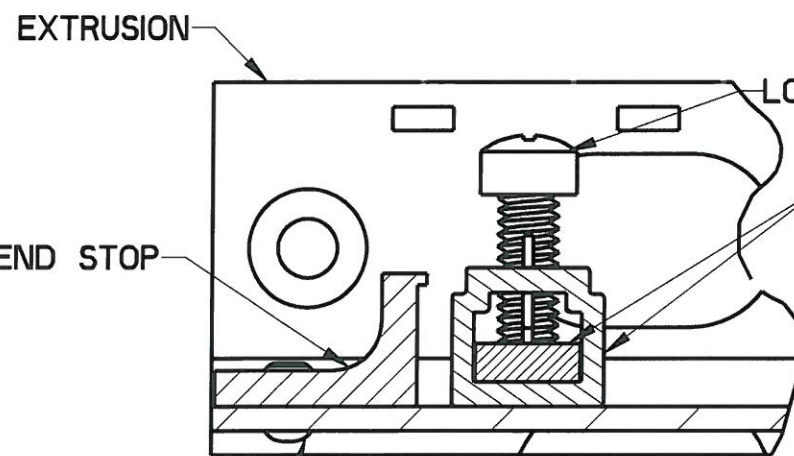
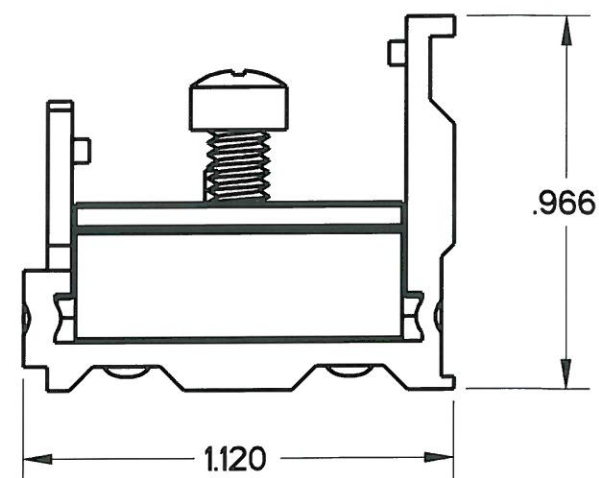


APCD P/N

DATE CODE

NOTES:

- MATERIALS AND FINISH  
TRACK, LOCKING CLAMP, AND END STOP - ALUMINUM ALLOY 6063  
TEMPER T5, PER FED SPEC. QQ-A-200/9, BLACK ANODIZE PER MIL-A-8625  
TYPE II, CLASS 2.  
LOCKING CLAMP SCREW - CORROSION RESISTANT, PASSIVATED, SELF-LOCKING.  
RIVETS - ALUMINUM ALLOY #2117, CHROMATE PER MIL-DTL-5541, CLASS 1A, YELLOW.
- PARTS CONFORM TO REQUIREMENTS OF M81714/16, EXCEPT NO. OF MOUNTING POSITIONS.
- APCD P/N TJT703002 SHOWN.



SECTION A-A

2X RIVET (HEADS ON BOTTOM)

\* DIVIDE BY 3 FOR SIZE 12 MODULE MOUNTING

APCD P/N	MTG POS.	DIM A	DIM L
TJT703002	2	2.171	1.671
TJT703016	16	7.631	7.131
TJT703017	17	8.021	7.521
TJT703018	18	8.411	7.911
TJT703019	19	8.801	8.301
TJT703020	20	9.191	8.691
TJT703021	21	9.581	9.081
TJT703028	28	12.311	11.811

<b>DIMENSIONS</b> ANSI Y14.5M UNITS: INCHES Pro/E FILE	<b>TOLERANCES</b> .XX ±0.01 .XXX ±0.005 ANGLES ±2.0°	<b>PROJECTION</b> 	<b>Amphenol Pcd</b> SPECIFICATION DRAWING ENGR M.Hai 12-Apr-11		<b>TITLE</b> TERMINAL JUNCTION TRACK FEEDBACK - LIGHTWEIGHT	
			ORIGINAL 	THIS DOCUMENT CONTAINS PROPRIETARY INFORMATION WHICH IS THE CONFIDENTIAL PROPERTY OF AMPHENOL PCD INC. BEVERLY, MA, USA CHKD  4/19/11 APPD  4/20/11		SIZE <b>B</b> DWG NO. <b>TJT703002</b>

TJT701002

TJT701002