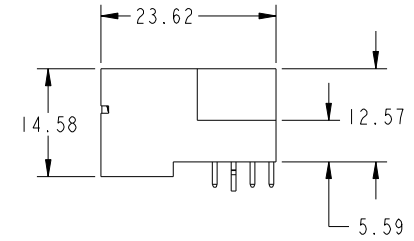
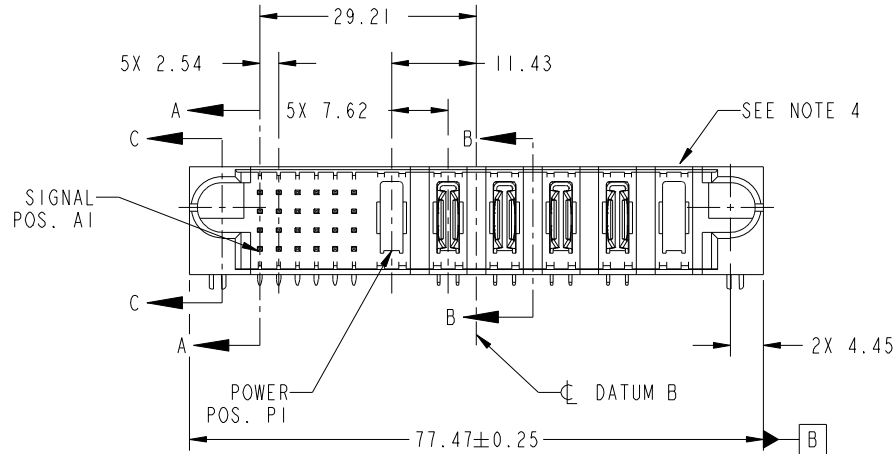


PRODUCT NO.	ROWS	SIGNAL						POWER						E2		
		E1	1	2	3	4	5	6	P1	P2	P3	P4	P5		P6	
51939-710-- NOTE 3	D C B A		H	H	H	H	H	H	X	PA	PA	PA	PA	PA	X	
			G	G	T	G	G	G								
			F	S	S	S	S	S								
			E	E	E	E	E	E								



CODE	DIM "M" MATING LENGTH	CONTACT TYPE
H	[5.59]	SIGNAL
G	[5.59]	SIGNAL
F	[5.59]	SIGNAL
E	[5.59]	SIGNAL
S	[6.86]	SIGNAL
U	[6.86]	SIGNAL
T	[6.86]	SIGNAL
R	[6.86]	SIGNAL
PA	[N/A]	POWER
HA	[N/A]	HOLD-DOWN
X	OMITTED	OMITTED

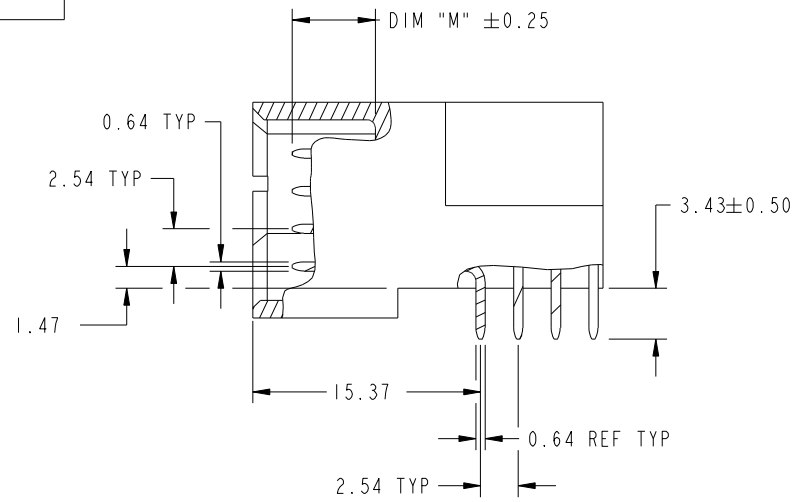
spec ref	*	dr	Weller Luo	2012-10-07	projection	MM	size	A4	scale	1:1
tolerance std	TOLERANCES UNLESS OTHERWISE SPECIFIED	eng	Weller Luo	2012-11-25			ecn no	DG06-XXXX	rel level	Released
SEE NOTE		chr	-	-						
surface		appr	PM Zheng	2012-11-25						
	linear	0.X	±0.5		title	24S + 6ACP	dwg no	51939-710	rev	A
		0.XX	±0.25							
		0.XXX	±0.1							
	angular	0°	±2°	www.fci.com	cat. no.	-	Product - Customer Drw		sheet 1 of 4	

Print File - REV C - 2009-06-09

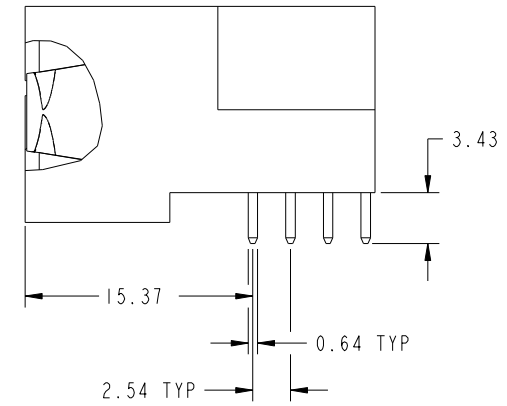


Copyright FCI.

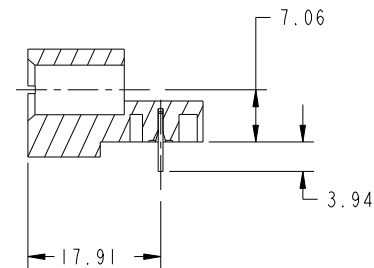
PRODUCT NUMBER
51939-710__
NOTE: 3



BROKEN-OUT SECTION A-A
SCALE 2:1



SECTION B-B
SCALE 2:1



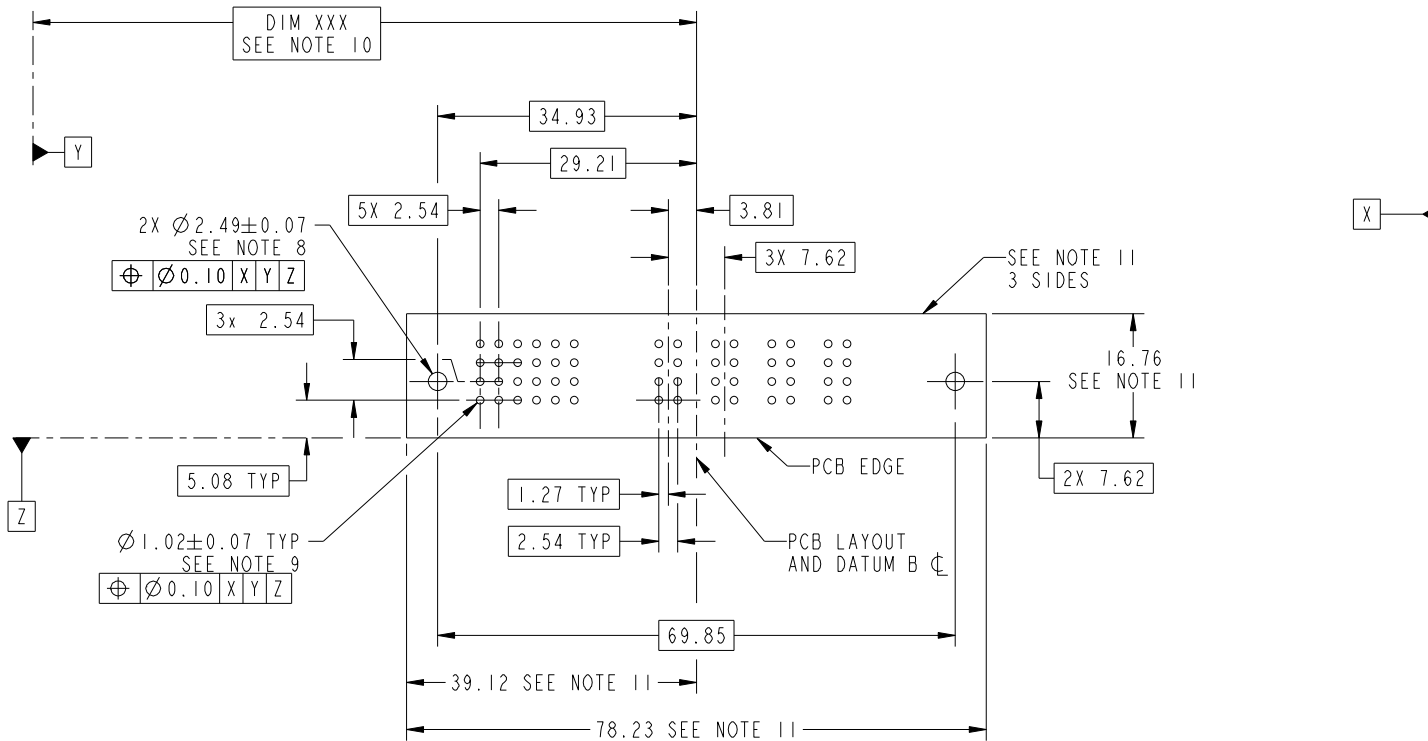
SECTION C-C



Copyright FCI.

dr	Weller Luo	2012-10-07	projection	MM	size	A4	scale	1:1
eng	Weller Luo	2012-11-25			ecn no	DG06-XXXX		
chr	-	-			rel level	Released		
appr	PM Zheng	2012-11-25	product family	PwrBlade				
	title	24S + 6ACP		dwg no	51939-710		rev	A
www.fci.com	cat. no.	-	Product - Customer Drw			sheet 2 of 4		

PRODUCT NUMBER
51939-710__
NOTE: 3



RECOMMENDED PCB LAYOUT



Copyright FCI.

dr	Weller Luo	2012-10-07	projection	MM	size	scale
eng	Weller Luo	2012-11-25			A4	1:1
chr	-	-			ecn no	DG06-XXXX
appr	PM Zheng	2012-11-25	product family	PwrBlade	rel level	Released
	title	24S + 6ACP		dwg no	51939-710	
www.fci.com	cat. no.	-		Product - Customer Drw		rev
						A
				sheet 3 of 4		

Print File - REV C - 2009-06-09

PRODUCT NUMBER

51939-710__
NOTE: 3

NOTES:

1. DIMENSIONS AND TOLERANCES ARE IN ACCORDANCE WITH ASME Y14.5M, 1994 UNLESS OTHERWISE SPECIFIED.

CONNECTOR NOTES:

- 2. HOUSING MATERIAL: UL 94 V-0 GLASS FILLED HIGH-TEMP THERMOPLASTIC
POWER CONTACT MATERIAL: COPPER ALLOY
SIGNAL PIN MATERIAL: COPPER ALLOY
- 3. SEE ITEM 1 & 2 IN PRINT 10064183 FOR PLATING SPEC OF 51939-710 AND 51939-710LF RESPECTIVELY.
- 4. MANUFACTURER'S NAME, DATE CODE AND OPTIONAL P/N TO APPEAR ON THIS SURFACE. THE P/N CAN BE OMITTED IF THERE IS NOT ENOUGH SPACE ON THIS SURFACE.
- 5. PRODUCT SPECIFICATION GS-12-149.
APPLICATION SPECIFICATION BUS-20-067.
- 6. PACKAGED IN TRAYS.

PCB NOTES:

- 7. ALL HOLE DIAMETERS ARE FINISHED HOLE SIZE.
- 8. MOUNTING HOLES, WHERE APPLICABLE, ARE UNPLATED.
- 9. $\varnothing 1.151 \pm 0.025$ DRILLED HOLES PLATED WITH 0.008 MIN SnPb OR Sn OVER 0.03 TO 0.08 Cu PLATING TO ACHIEVE $\varnothing 1.02 \pm 0.07$ HOLE.
- 10. "DIM XXX" TO BE DETERMINED BY THE CUSTOMER.
- 11. CONNECTOR KEEP-OUT ZONE.



C

Copyright FCI.

D

dr	Weller Luo	2012-10-07	projection 	MM 	size	A4	scale	1:1	
eng	Weller Luo	2012-11-25			ecn no	DG06-XXXX			
chr	-	-			rel level	Released			
appr	PM Zheng	2012-11-25	product family		PwrBlade				
			title			24S + 6ACP		rev	A
www.fci.com			cat. no.			-		Product - Customer Drw	
			dwg no			51939-710		sheet 4 of 4	