

1

2

3

4

5

6

7

Dimension

DIM A	Nx5,08
DIM B	(N-1)x5,08



N=Number of poles

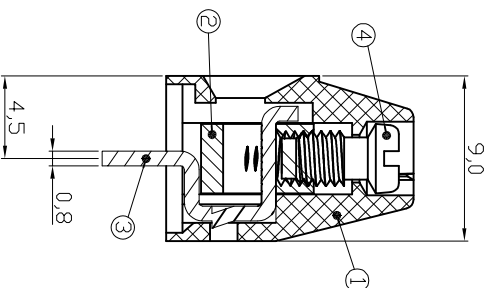
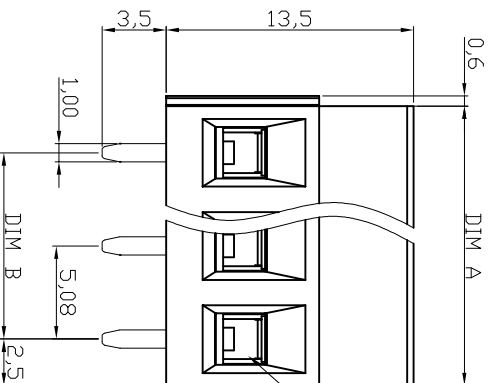
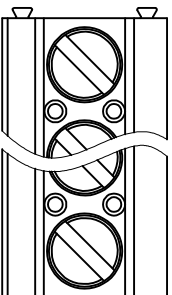
POLES	TOL
2p-6p	±0.15
7p-12p	±0.25
13p-16p	±0.35
17p-24p	±0.40

Material

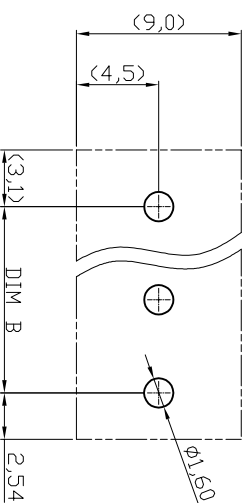
- Item 1 Terminal housing: Thermoplastic UL94V-0, Green
 Item 2 Clamp: Brass ,Ni plated
 Item 3 Wire guard solder pin: Brass ,Tin plated
 Item 4 Terminal screw: Steel Zinc plating "slot type"

Electrical cULus/ FIMKO
 Voltage rating: 300VAC/300VAC
 Current rating: 16A/17.5A
 Wire range: 0.5-1.5mm²
 Solid wire(AWG): 12-28
 Stranded wire(AWG): 12-28
 Torque: 3.5LB-in/0.5N.m
 Screw: M3

Wire strip length: 6-7mm
 Withstanding Voltage: 1.6kV/2.5kV
 Operating temperature: -40°C to +115°C
 Soldering temperature: 250°C±10°C/5Sec
 Safety Approval:  



N=Number of contacts



A

B

C

D

E

F

G

H

RoHS compliant



File No.: E349947

Scale	1:1
TOLERANCE	
X.	±0.50
X.X	±0.30
X.XX	±0.10
DIM	TOL
X.°	±1°
Angle	TOL

Id.	Modification	Date	Name
③	Add the UL File No.	19.04.2016	Winnie
②	Modify drawing	19.04.2010	Dean
①	Drawn	10.12.2009	Dean

Date	Name
Drawn	Dean
Approved	Winnie

ASSMANN
WSW/ components

Customer-No.

ASSMANN WSW-No.
A-TB508-VIXXH

Drawing-No.

ASS 3927 CO rev03

Replace

Sheet

1

2

3

4

5

6

7