

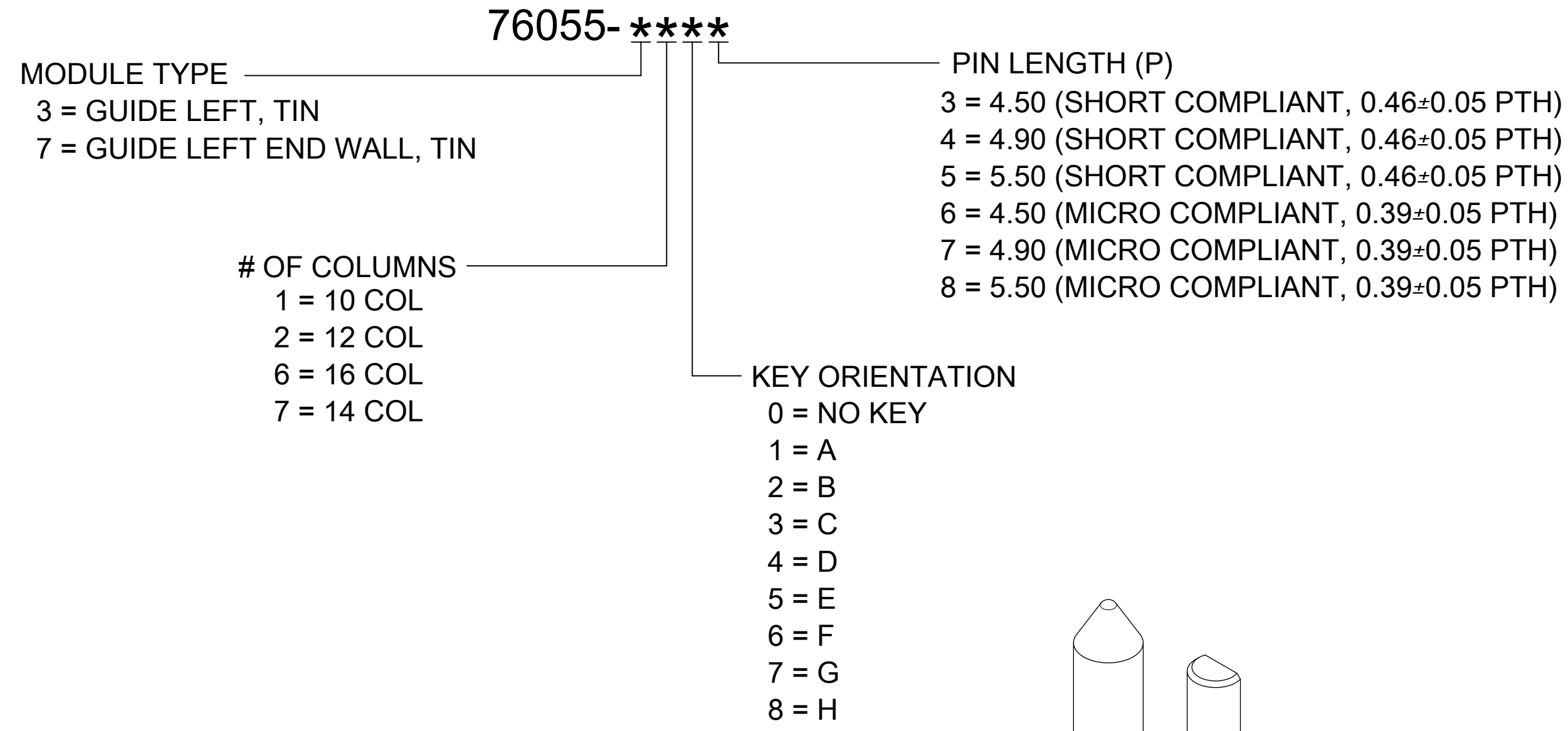
NOTES:

1. MATERIALS: HOUSING - LIQUID CRYSTAL POLYMER (LCP)
GLASS-FILLED, UL94V-0
TERMINALS - HIGH PERFORMANCE COPPER ALLOY
2. FINISH: 30μ MIN. GOLD IN CONTACT AREA.
SELECTIVE TIN ON PCB TAILS.
NICKEL OVERALL.
3. REFER TO MOLEX PRODUCT SPECIFICATION PS-76060-999
FOR PERFORMANCE SPECIFICATIONS AND ADDITIONAL PCB INFORMATION.
4. THIS PART CONFORMS TO CLASS B REQUIREMENTS OF
MOLEX COSMETIC SPEC PS-45499-002.
5. PACKAGE PER: PK-70873-759.
6. SEE SHEETS 2 & 3 FOR PART NUMBERS AND BOARD RELATIONSHIPS.
7. FOR GROUNDED GUIDE PINS USE DIA. 3.56 +/-0.08 (PTH)
DIA. 3.66 (DRILL) AND DIA 6.5 (PAD).
8. MATES WITH IMPACT DC SERIES NO. 76060.
9. KEEP OUT ZONE FOR BP HOUSING LENGTH INCLUDES AN ADDITIONAL 1.0MM
TO ACCOMMODATE FOR SPACE REQUIRED BY DC FRONT HOUSING.
10. REFER TO MOLEX PCB ROUTING GUIDE AS-76060-990 FOR ANTIPAD AND ROUTING RECOMMENDATIONS.
11. CONNECTORS SUPPLIED WITH A 2-56 UNC-2A SCREW.
12. "THESE DIMENSIONS REPRESENT THE AREA NEEDED TO ACCOMMODATE CONNECTOR INSERTION
AND REPAIR ON THE PC BOARD. THIS IS REFERRED TO AS THE "CONNECTOR KEEP OUT ZONE"
AND DOES NOT REPRESENT THE ACTUAL PERIMETER OF THE CONNECTOR. WHEN LAYING OUT
A PC BOARD FOR CONNECTORS STACK TOGETHER, USE A 1.9mm PROGRESSION."

THIS DRAWING CONTAINS INFORMATION THAT IS PROPRIETARY TO MOLEX ELECTRONIC TECHNOLOGIES, LLC AND SHOULD NOT BE USED WITHOUT WRITTEN PERMISSION

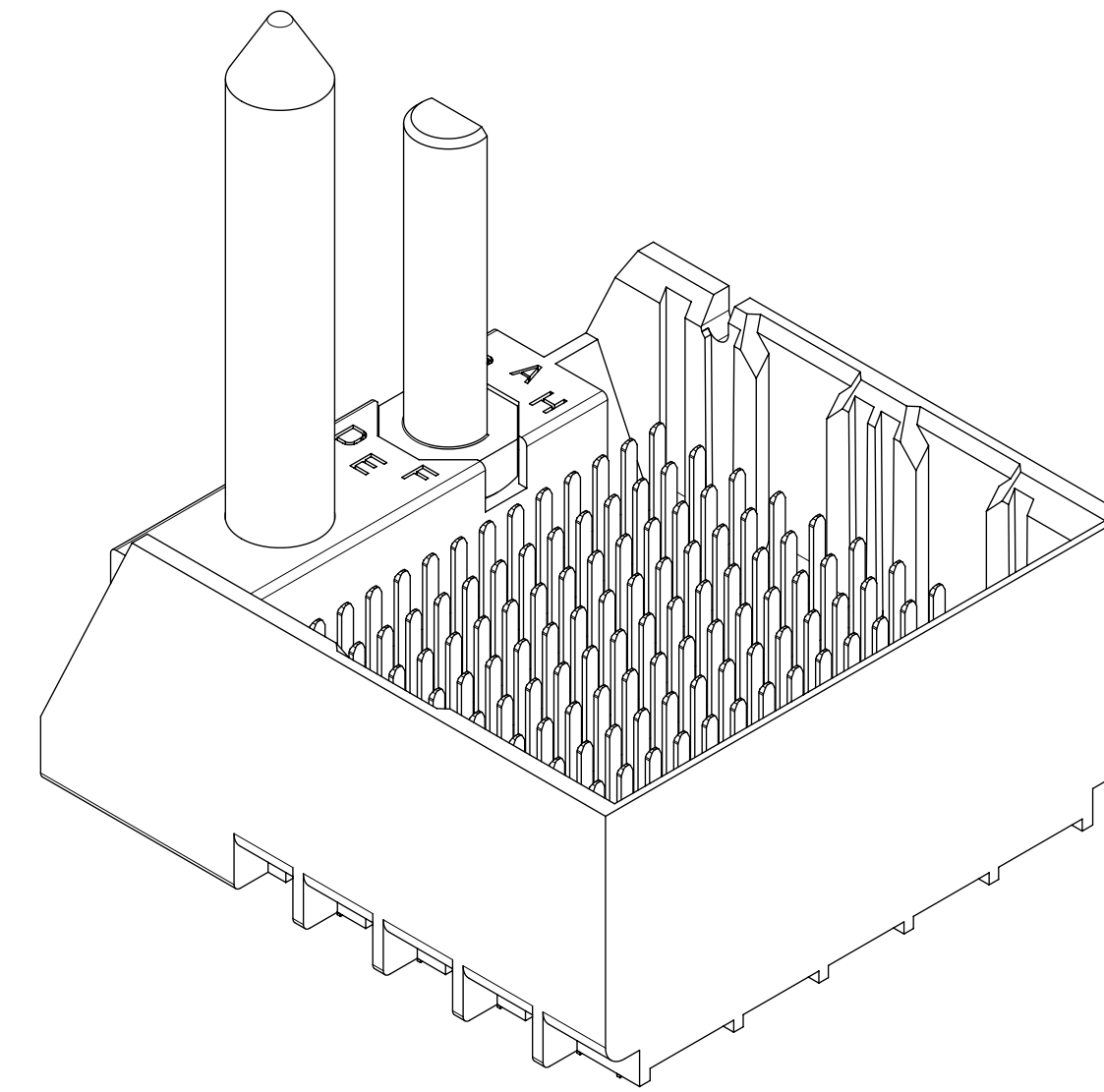
MIGRATED TO NX EC NO: 167466 DRWN: ABABU01 CHKD: CD REV APPR: GGA	2017/10/31	GENERAL TOLERANCES (UNLESS SPECIFIED)	DIMENSION UNITS	SCALE	molex IMPACT 5 PAIR HEADER LEFT GUIDED ASSEMBLY SALES DRAWING		
	2017/10/31	ANGULAR TOL ± 0.5 °	MM	4:1			
	2017/11/02	4 PLACES ±	DRWN BY	DATE	PRODUCT CUSTOMER DRAWING		
		3 PLACES ±	MSANDBERG	2007/05/24			
	2 PLACES ± 0.13	CHKD BY	DATE	SERIES MATERIAL NUMBER CUSTOMER			
	1 PLACE ± 0.25	JLAURX	2007/05/24				
	0 PLACES ±	APPR BY	DATE	DOCUMENT NUMBER DOC TYPE DOC PART SHEET NUMBER			
		JLAURX	2010/10/15				
	DRAFT WHERE APPLICABLE MUST REMAIN WITHIN DIMENSIONS	DRAWING SIZE	THIRD ANGLE PROJECTION	76055	SEE TABLE	GENERAL MARKET	
J2		D		SD-76055-002	PSD	001	1 OF 3

PART NUMBER LOGIC



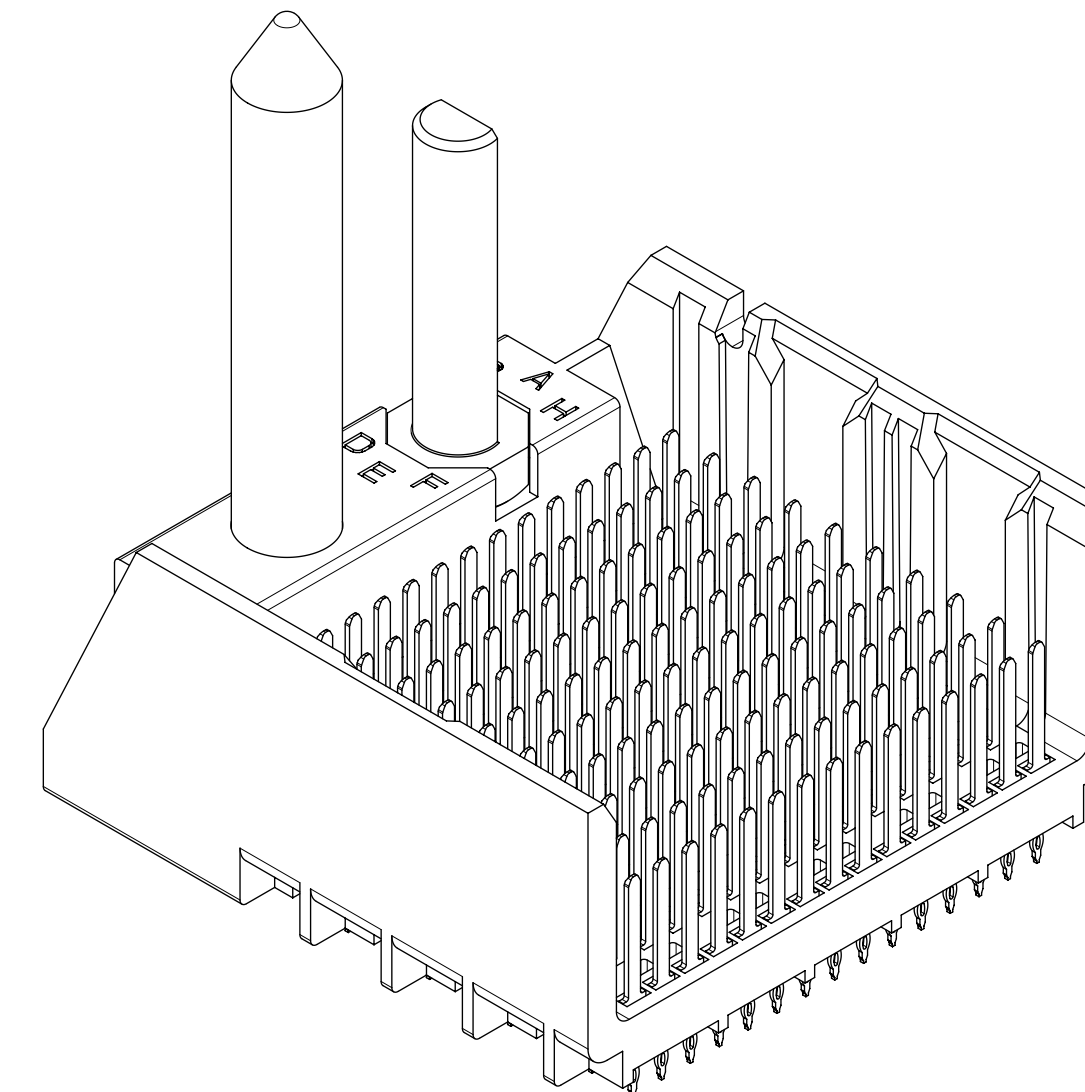
PART NUMBER TABLE

MATERIAL NUMBER	# OF COLUMNS	# OF DIFF PAIR	DIM. A	DIM. B	GUIDE LEFT END WALL OPTION
76055-1**	10	50	26.9	17.10	
76055-2**	12	60	30.7	20.90	
76055-7**	14	70	34.5	24.70	
76055-6**	16	80	38.3	28.50	



GUIDE LEFT
END WALL
OPTION

MATERIAL NUMBER	# OF COLUMNS	# OF DIFF PAIR	DIM. A	DIM. B	GUIDE LEFT OPEN WALL OPTION
76055-1**	10	50	25.5	17.10	
76055-2**	12	60	29.3	20.90	
76055-7**	14	70	33.1	24.70	
76055-6**	16	80	36.9	28.50	

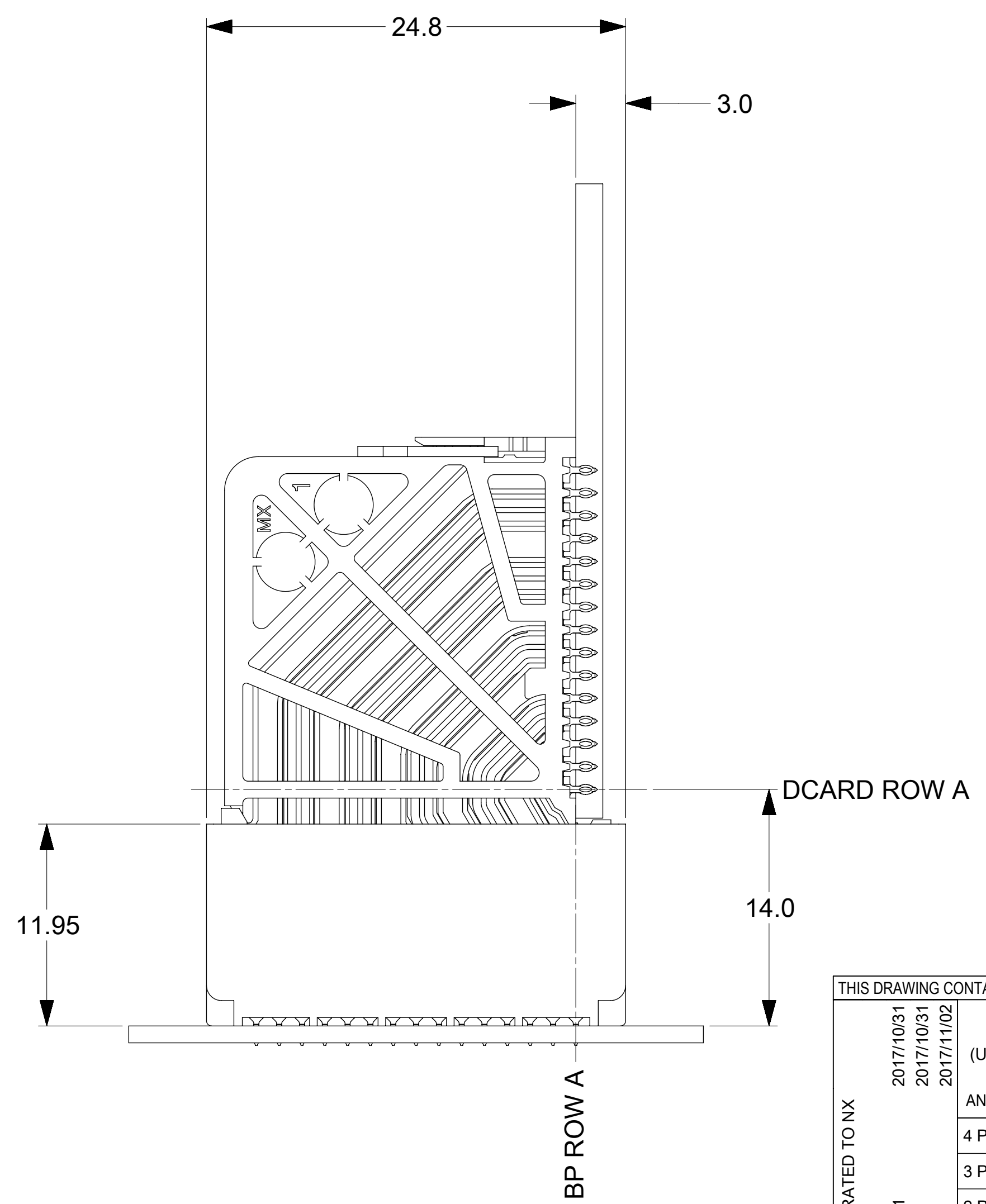
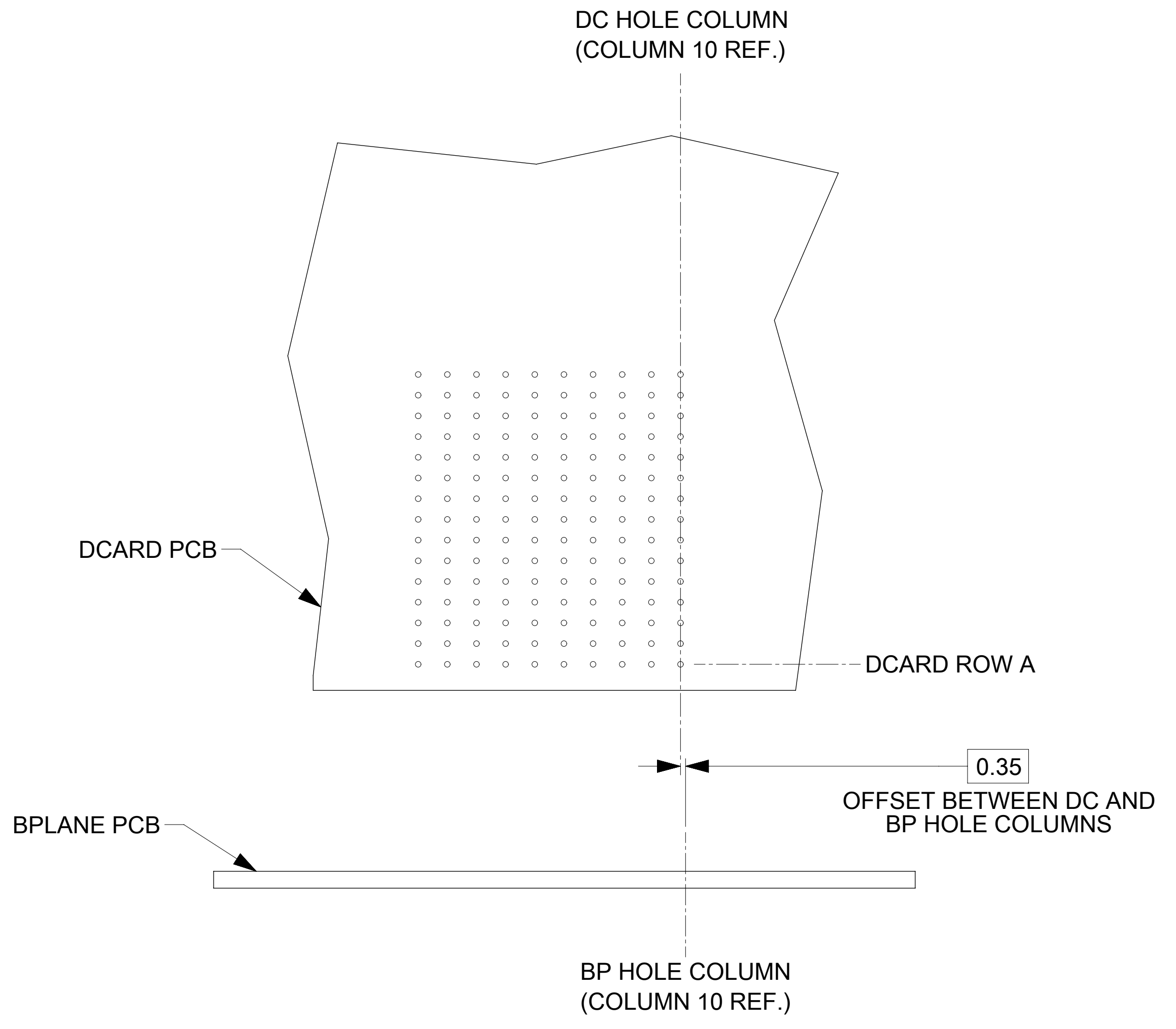
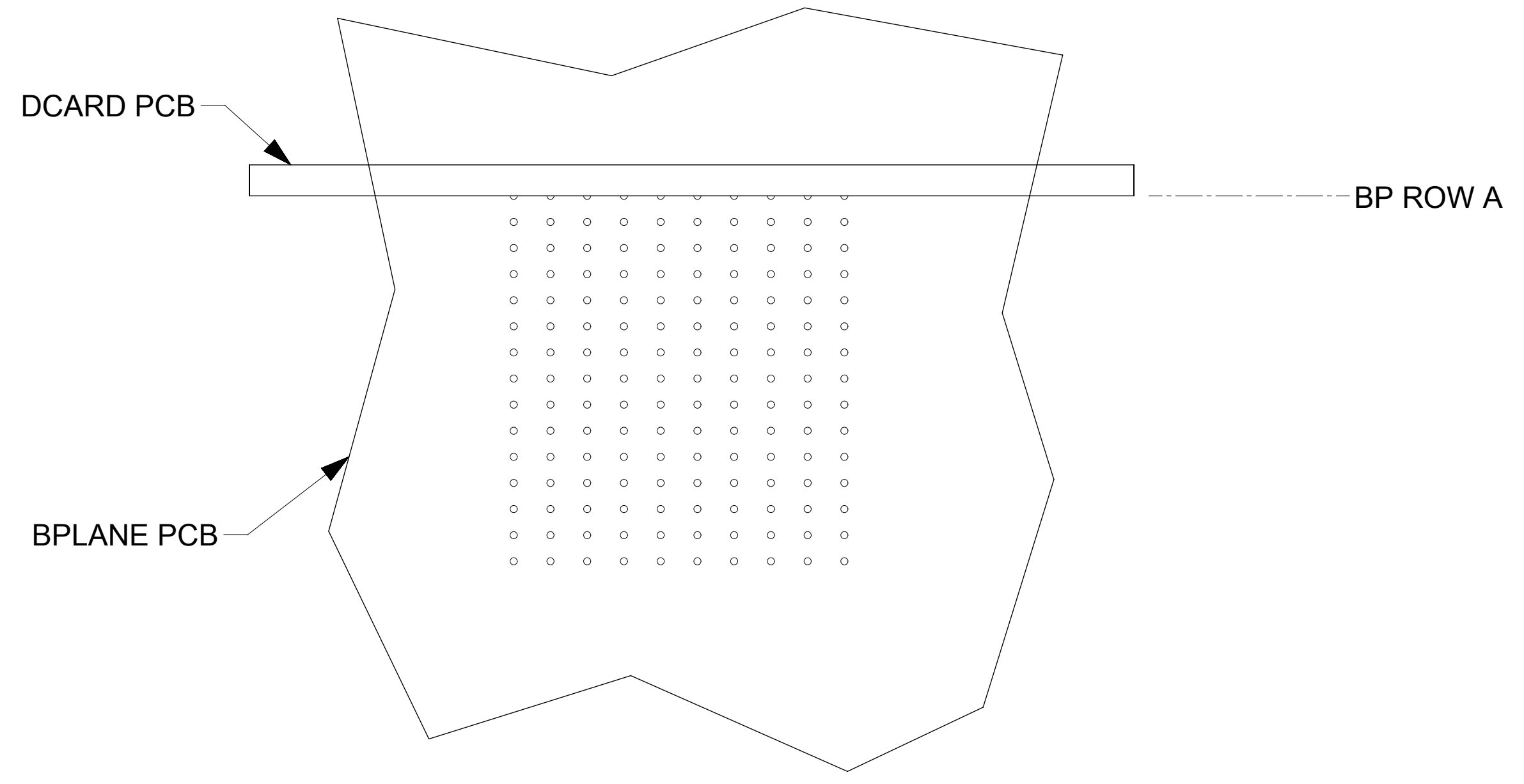


GUIDE LEFT
OPEN WALL
OPTION

THIS DRAWING CONTAINS INFORMATION THAT IS PROPRIETARY TO MOLEX ELECTRONIC TECHNOLOGIES, LLC AND SHOULD NOT BE USED WITHOUT WRITTEN PERMISSION

MIGRATED TO NX EC NO: 167466 DRWN: ABAB001 CHKD: CD REV APPR: GGA	2017/10/31	2017/10/31	2017/11/02	GENERAL TOLERANCES (UNLESS SPECIFIED)	DIMENSION UNITS	SCALE	molex IMPACT 5 PAIR HEADER LEFT GUIDED ASSEMBLY SALES DRAWING PRODUCT CUSTOMER DRAWING			
	4 PLACES ±				MM	4:1				
	3 PLACES ±				ANGULAR TOL ± 0.5 °	DRWN BY		DATE		
	2 PLACES ± 0.13				MSANDBERG	2007/05/24				
	1 PLACE ± 0.25				CHKD BY	DATE				
0 PLACES ±			JLAURX	2007/05/24						
DRAFT WHERE APPLICABLE MUST REMAIN WITHIN DIMENSIONS			APPR BY	DATE	DRAWING SIZE		THIRD ANGLE PROJECTION			
J2			JLAURX	2010/10/15	D		SERIES	MATERIAL NUMBER	CUSTOMER	
RELEASE STATUS			P1	RELEASE DATE	02.11.2017	08:14:50	76055	SEE TABLE	GENERAL MARKET	
DOCUMENT NUMBER			SD-76055-002		DOC TYPE	PSD	DOC PART	001	SHEET NUMBER	2 OF 3

IMPACT 5 PAIR BOARD RELATIONSHIPS



THIS DRAWING CONTAINS INFORMATION THAT IS PROPRIETARY TO MOLEX ELECTRONIC TECHNOLOGIES, LLC AND SHOULD NOT BE USED WITHOUT WRITTEN PERMISSION

MIGRATED TO NX EC NO: 167466 DRWN: ABABU01 CHKD: CD REV APPR: GGA	2017/10/31	2017/11/02	GENERAL TOLERANCES (UNLESS SPECIFIED)		DIMENSION UNITS	SCALE	molex IMPACT 5 PAIR HEADER LEFT GUIDED ASSEMBLY SALES DRAWING		
	ANGULAR TOL ± 0.5 °		MM	4:1	DRWN BY	DATE			
	4 PLACES ±	MSANDBERG		2007/05/24	CHKD BY	DATE	PRODUCT CUSTOMER DRAWING		
	3 PLACES ±	JLAURX		2007/05/24	APPR BY	DATE			
	2 PLACES ± 0.13	JLAURX		2010/10/15	DRAWING SIZE	THIRD ANGLE PROJECTION	SERIES	MATERIAL NUMBER	CUSTOMER
1 PLACE ± 0.25	DRAFT WHERE APPLICABLE MUST REMAIN WITHIN DIMENSIONS		D	76055	SEE TABLE	GENERAL MARKET	DOCUMENT NUMBER: SD-76055-002 DOC TYPE: PSD DOC PART: 001 SHEET NUMBER: 3 OF 3		
0 PLACES ±									