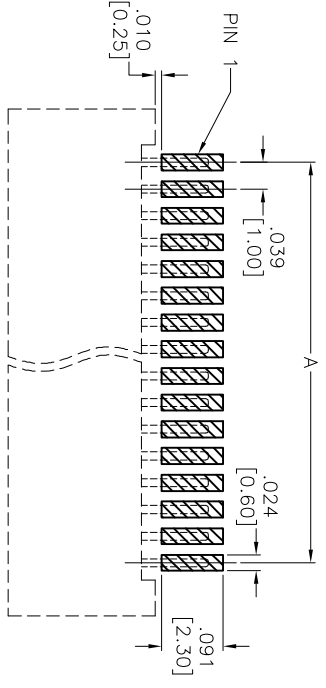
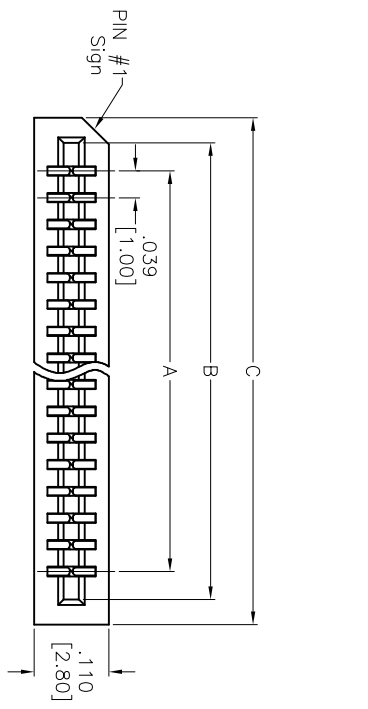
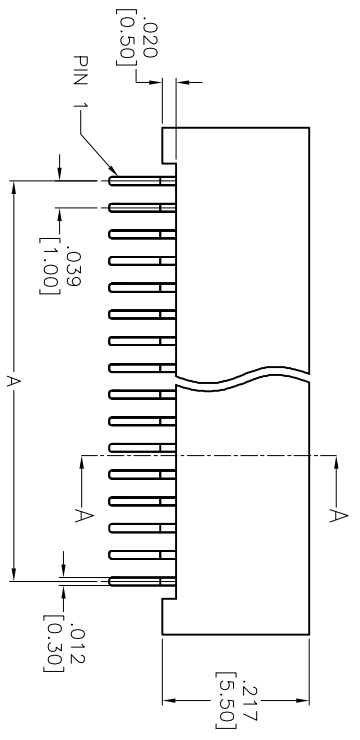
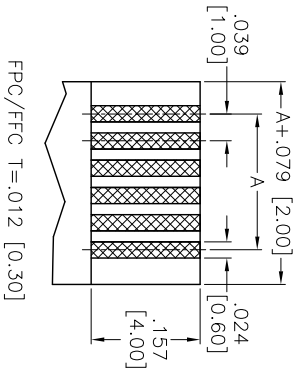


Rev	AWO #	Description	Date	Appr
-		RELEASED	6/22/15	

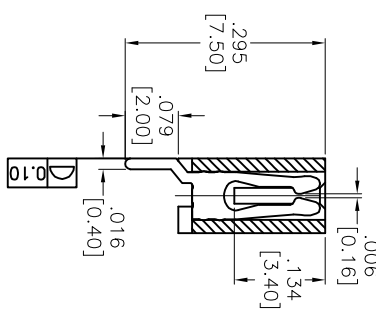
APPROVED: _____
 DATE: _____ TITLE: _____



RECOMMENDED PCB LAYOUT



SECTION A-A



Positions: 2 thru 36
 A = .039 [1.00] x No. of Spaces
 B = A + .083 [2.10]
 C = A + .157 [4.00]

SPECIFICATIONS:
 Material: Insulator: Hi-Temp Thermoplastic, Glass reinforced, rated UL 94V-0
 Insulator color: Black
 Contacts: Copper Alloy
 Plating: Tin over Copper underplate overall
 Electrical: Current rating: 1 Amps max
 Insulation resistance: 30 mohms max initial
 Dielectric withstanding voltage: 500 VAC for 1 minute
 Temperature Rating: Operating temperature: -25°C to +85°C
 Environmental: Lead free, RoHS compliant



ADAM TECH
 909 Railway Avenue, Union, NJ 07083
 Phone: 908-687-5000 Fax: 908-687-5710

UNLESS OTHERWISE SPECIFIED	
ALL DIMENSIONS ARE IN INCHES [MM]	
TOLERANCES EXCEPT AS NOTED	HOLDERS
.X ± .10	ØXX ± .10
.XX ± .020	ØXXX ± .015
.XXX ± .015	ØXXXX ± .010
APPROVALS	DATE
DRAWN AY	6/22/15
CHECKED AY1	6/22/15
APPROVED	

TITLE	SIZE	PART NO.	SCALE	SHEET 1 OF 1
LIF FLEX CIRCUIT CONNECTOR SIDE ENTRY, SMT	X	PCB-C5-XX-SA-SMT	NTS	