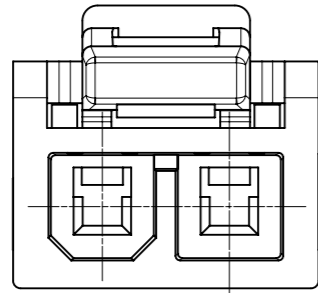


NOTES:

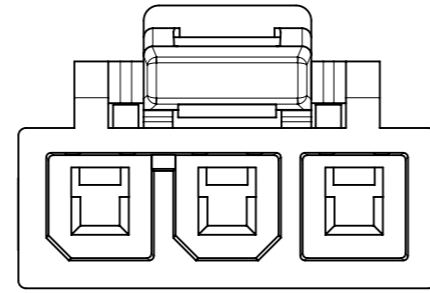
1. MATERIAL: NYLON, BLACK,UL 94-V0
2. FINISH: NONE.
3. PRODUCTION SPECIFICATION: 2125150000-PS;
APPLICATION SPECIFICATION: 2125150001-AS.
4. PACKAGING SPECIFICATION: 2125140001-PK.
5. THIS HOSUING TO BE USED WITH FEMALE TERMINAL SERIES 212515 AND TPA SERIES 212516.
6. THIS PART MATES WITH SERIES 215915.
7. THIS PART CONFORMS TO CLASS 'B' REQUIREMENTS OF COSMETIC SPECIFICATION PS-45499-002.

FUNCTIONAL SYMBOLS	THIS DRAWING CONTAINS INFORMATION THAT IS PROPRIETARY TO MOLEX ELECTRONIC TECHNOLOGIES, LLC AND SHOULD NOT BE USED WITHOUT WRITTEN PERMISSION		CURRENT REV DESC:		molex										
	△A = 0	mm							SCALE 2:1						
DIVISIONAL SYMBOLS	GENERAL TOLERANCES (UNLESS SPECIFIED)				EC NO: 679543 DRWN: ZIXUAG 2021/09/28 CHK'D: XQZHANG 2021/09/29 APPR: XQZHANG 2021/09/29				PRODUCT CUSTOMER DRAWING						
	ANGULAR TOL ± 0.5°														
	4 PLACES ±				DOCUMENT NUMBER				DOC TYPE		DOC PART		REVISION		
	3 PLACES ±				2021/05/24				2021/07/19		2159130000-SD		PSD 000 A1		
	2 PLACES ± 0.25				DRWN: ZIXUAG				APPR: YXZHENG		MATERIAL NUMBER		CUSTOMER		SHEET NUMBER
1 PLACE ± 0.35				DRAFT WHERE APPLICABLE MUST REMAIN WITHIN DIMENSIONS				THIRD ANGLE PROJECTION		DRAWING		SERIES		GENERAL CUSTOMER	
0 PLACES ±				A3-SIZE		215913		SEE TABLE		GENERAL CUSTOMER		1 OF 2			

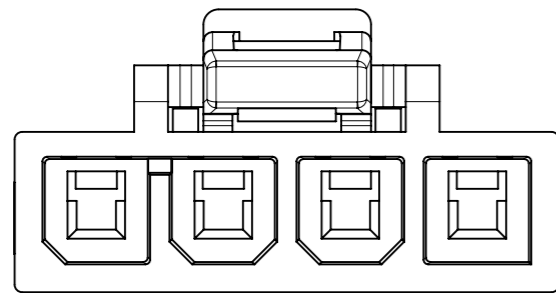
CKT SIZE	PART NUMBER	DIM_X
2	215913-1002	10.10
3	215913-1003	13.80
4	215913-1004	18.00
5	215913-1005	22.20
6	215913-1006	26.40



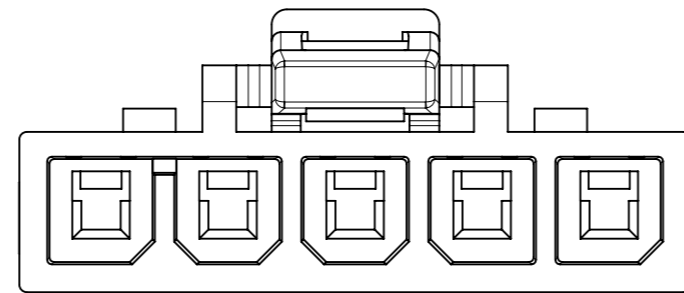
2CKT



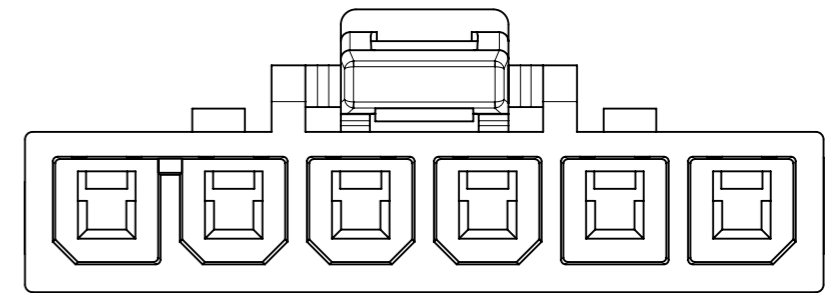
3CKT



4CKT



5CKT



6CKT

FUNCTIONAL SYMBOLS	THIS DRAWING CONTAINS INFORMATION THAT IS PROPRIETARY TO MOLEX ELECTRONIC TECHNOLOGIES, LLC AND SHOULD NOT BE USED WITHOUT WRITTEN PERMISSION		CURRENT REV DESC:																						
	$\nabla_A = 0$ $\nabla_F = 0$ $\nabla_P = 0$	DIMENSION UNITS: mm SCALE: 4:1						GENERAL TOLERANCES (UNLESS SPECIFIED)																	
DIVISIONAL SYMBOLS	<table border="1"> <thead> <tr> <th></th> <th>MM</th> <th>INCH</th> </tr> </thead> <tbody> <tr> <td>4 PLACES</td> <td>±</td> <td>±</td> </tr> <tr> <td>3 PLACES</td> <td>±</td> <td>±</td> </tr> <tr> <td>2 PLACES</td> <td>± 0.25</td> <td>±</td> </tr> <tr> <td>1 PLACE</td> <td>± 0.35</td> <td>±</td> </tr> <tr> <td>0 PLACES</td> <td>±</td> <td>±</td> </tr> </tbody> </table>			MM	INCH	4 PLACES	±	±	3 PLACES	±	±	2 PLACES	± 0.25	±	1 PLACE	± 0.35	±	0 PLACES	±	±	EC NO: 679543 DRWN: ZIXUAQ 2021/09/28 CHK'D: XQZHANG APPR: XQZHANG 2021/09/29		PRODUCT CUSTOMER DRAWING		
		MM	INCH																						
4 PLACES	±	±																							
3 PLACES	±	±																							
2 PLACES	± 0.25	±																							
1 PLACE	± 0.35	±																							
0 PLACES	±	±																							
DRAFT WHERE APPLICABLE MUST REMAIN WITHIN DIMENSIONS		THIRD ANGLE PROJECTION	DRAWING: A3-SIZE	SERIES: 215913	MATERIAL NUMBER: SEE TABLE	CUSTOMER: GENERAL CUSTOMER	SHEET NUMBER: 2 OF 2																		