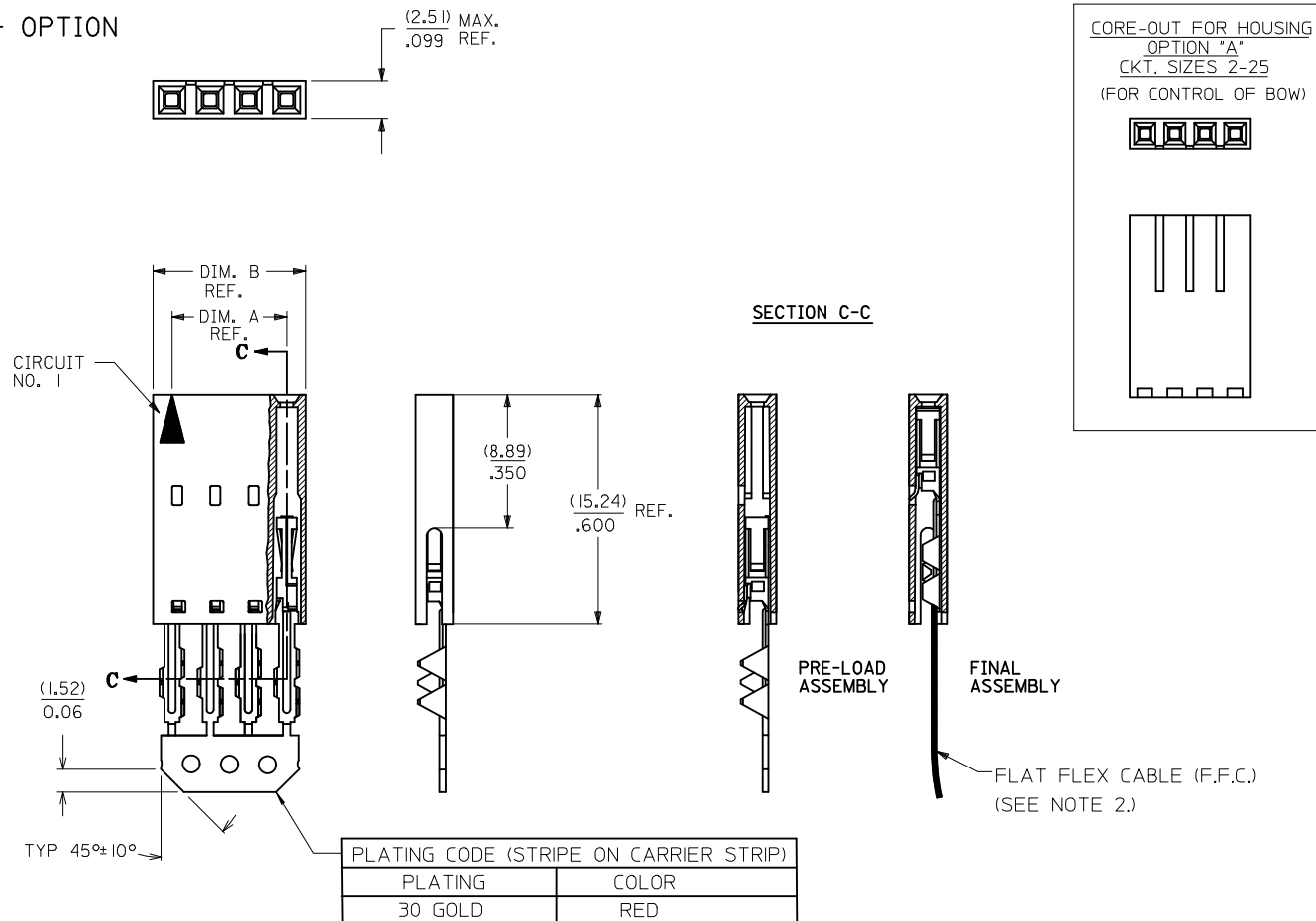


"A" - OPTION



CKT. SIZE	EDP. NO.	ENG. NO.	A	B
2	015-47-4024	70430-0351	(2.54)/.100	(5.05)/.199
3	015-47-4034	70430-0352	(5.08)/.200	(7.59)/.299
4	015-47-4044	70430-0353	(7.62)/.300	(10.13)/.399
5	015-47-4054	70430-0354	(10.16)/.400	(12.67)/.499
6	015-47-4064	70430-0355	(12.70)/.500	(15.21)/.599
7	015-47-4074	70430-0356	(15.24)/.600	(17.75)/.699
8	015-47-4084	70430-0357	(17.78)/.700	(20.29)/.799
9	015-47-4094	70430-0358	(20.32)/.800	(22.83)/.899
10	015-47-4104	70430-0359	(22.86)/.900	(25.37)/.999
11	015-47-4114	70430-0360	(25.40)/1.000	(27.91)/1.099
12	015-47-4124	70430-0361	(27.94)/1.100	(30.45)/1.199
13	015-47-4134	70430-0362	(30.48)/1.200	(32.99)/1.299
14	015-47-4144	70430-0363	(33.02)/1.300	(35.53)/1.399
15	015-47-4154	70430-0364	(35.56)/1.400	(38.07)/1.499
16	015-47-4164	70430-0365	(38.10)/1.500	(40.61)/1.599
17	015-47-4174	70430-0366	(40.64)/1.600	(43.15)/1.699
18	015-47-4184	70430-0367	(43.18)/1.700	(45.69)/1.799
19	015-47-4194	70430-0368	(45.72)/1.800	(48.23)/1.899
20	015-47-4204	70430-0369	(48.26)/1.900	(50.77)/1.999
21	015-47-4214	70430-0370	(50.80)/2.000	(53.31)/2.099
22	015-47-4224	70430-0371	(53.34)/2.100	(55.85)/2.199
23	015-47-4234	70430-0372	(55.88)/2.200	(58.39)/2.299
24	015-47-4244	70430-0373	(58.42)/2.300	(60.93)/2.399
25	015-47-4254	70430-0374	(60.96)/2.400	(63.47)/2.499

- HOUSING MATERIAL: GLASS FILLED POLYESTER, UL94V-0, COLOR: BLACK.
TERMINAL MATERIAL: PHOSPHOR BRONZE.
PLATING 30 GOLD -0.76 MICROMETERS/30 MICROINCHES MINIMUM GOLD PLATE IN SELECT AREA
1.90 MICROMETERS/75 MICROINCHES MINIMUM TIN PLATE IN SELECT AREA
1.27 MICROMETERS/50 MICROINCHES MINIMUM NICKEL PLATE OVERALL.
- PRE LOADED ASSEMBLY TO BE USED WITH (0.30)/.012 MAX. THICK FLAT CABLE WITH (1.57)/.062 WIDE COPPER CONDUCTORS ON (2.54)/.100 CENTERS OR, (0.13)/.005-(0.28)/.011 THICK MYLAR WITH (1.02)/.040 - (1.65)/.065 WIDE SILVER INK CONDUCTORS ON (2.54)/.100 CENTERS.
- PRODUCT SPECIFICATION: PS-70430.
- STANDARD PACKING PER PK70873-0001 SHALL BE USED.
- SEE CHART FOR CIRCUIT SIZES, "A" AND "B" DIMENSIONS.
- TWO (2) CIRCUIT ASSEMBLIES SUPPLIED AS GROUPED PAIRS.
- PART MATES WITH (0.64)/.025 SQ. PINS, (8.13)/.320 TO (5.08)/.200 LONG ON (2.54)/.100 CENTERS.
- PARTS CONFORM TO CLASS B COSMETIC SPECIFICATION PS-45499-002.

THE PRIMARY CARTON WITH A LABEL STATING "ELV AND RoHS COMPLIANT" IS LEAD FREE. CARTONS WITHOUT THIS LABEL MAY CONTAIN LEAD.

STANDARDIZE EC NO: UCP2013-2452 DRWNR:WHIPPLE 2012/12/17 CHKD:DMORGAN 2011/12/17 APPR:SMILLER 2013/01/31	QUALITY SYMBOLS ▽=0 ▽=0 ▽=0	GENERAL TOLERANCES (UNLESS SPECIFIED)		DIMENSION STYLE MM/IN		SCALE	DESIGN UNITS INCH	THIRD ANGLE PROJECTION	
		4 PLACES ± --- ± ---	INCH	DRAWN BY RAS	DATE 1986/07/21	TITLE ASSEMBLY, CONNECTOR FFC FEMALE SINGLE ROW (2.54)/.100			
		3 PLACES ± --- ± .010	INCH	CHECKED BY MJM	DATE 1986/07/21	molex			
		2 PLACES ± 0.25 ± .015	INCH	APPROVED BY SMILLER	DATE 2013/01/31				
1 PLACE ± 0.38 ± ---	INCH	MATERIAL NO. SEE TABLE		DOCUMENT NO. SDA-70430-0351-0374	SHEET NO. 1 OF 1				
0 PLACE ± --- ± ---	INCH	ANGULAR ±1/2°		THIS DRAWING CONTAINS INFORMATION THAT IS PROPRIETARY TO MOLEX INCORPORATED AND SHOULD NOT BE USED WITHOUT WRITTEN PERMISSION					
DRAFT WHERE APPLICABLE MUST REMAIN WITHIN DIMENSIONS		SIZE C							