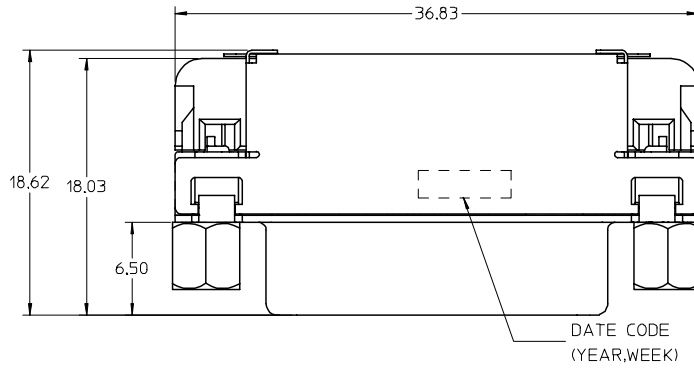


J
I
H
G
F
E
D
C
B
A

J
I
H
G
F
E
D
C
B
A



NOTES:

1.MATERIALS:

- FRONT SHIELD -- DEEP DRAW STEEL.
- BACK SHIELD -- STAINLESS STEEL.
- HOUSING --GLASS FILLED POLYMER,WHITE/NATURE,UL 94V-0.
- TAIL ALIGNER -- GLASS FILLED POLYMER,WHITE/NATURE,UL 94V-0.
- CONTACT -- COPPER ALLOY.
- MICROCROSS GROUND -- COPPER ALLOY.

2.PLATING : SEE SHEET 2

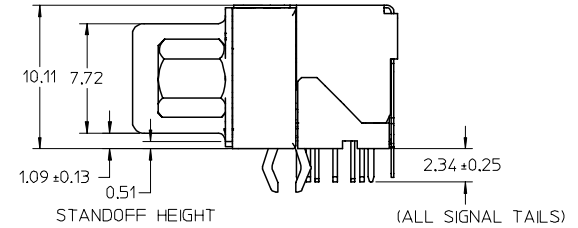
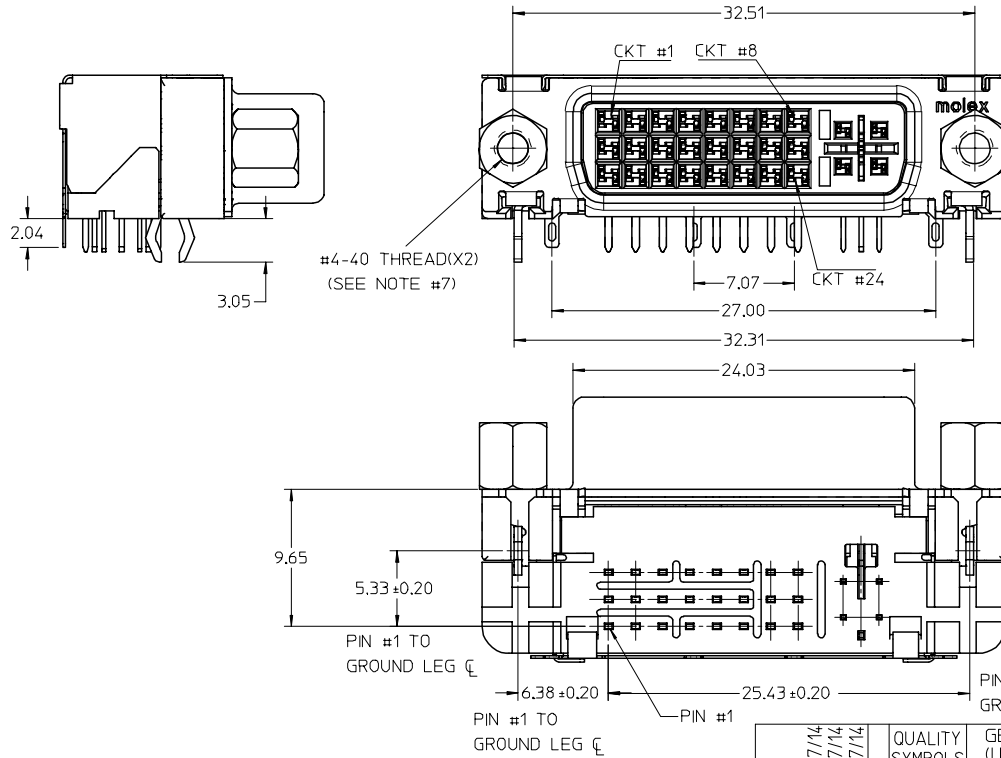
3.PRODUCT CONFORMS TO MOLEX PRODUCT SPECIFICATION NUMBER PS-74320-001

4.SEE SHEET 2 FOR RECOMMENDED PANEL CUT-OUT AND P.C.B.LAYOUT.

5.PARTS WILL BE PACKAGED IN TRAYS PER PK-74320-044.

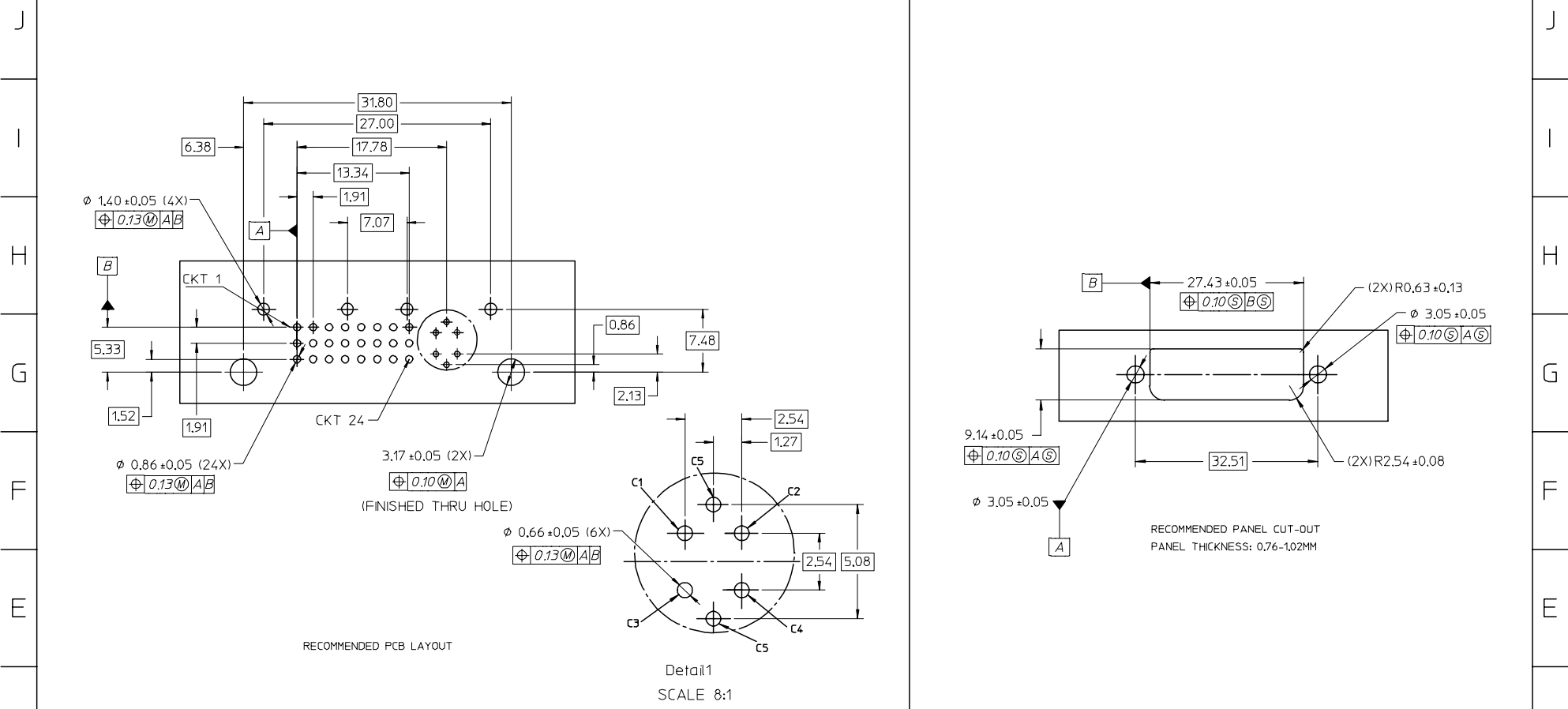
6.PRODUCT CONFIRMS TO DDWG DVI SPECIFICATION,REFER TO THIS SPECIFICATION FOR CONNECTOR MATING DIMENSIONS.

7.MOUNTING HARDWARE IS MOLEX P/N 88780-6066.REFER TO PRODUCT SPECIFICATION NUMBER PS-74320-001 FOR THE APPLICATION TORQUE REQUIREMENT FOR ASSEMBLING MOUNTING HARDWARE.



NEW RELEASE EC NO: SH2005-0004 DRAWN:DXUE 2004/07/14 CHKD: 2004/07/14 APPR:YTYAP 2004/07/14	DESCRIPTION REV	QUALITY SYMBOLS	GENERAL TOLERANCES (UNLESS SPECIFIED)	SCALE 4:1	DESIGN UNITS METRIC	THIRD ANGLE PROJECTION	REVISE ON CAD ONLY																
		▽ - 0 ◻ - 0	<table border="1"> <thead> <tr> <th></th> <th>mm</th> <th>INCH</th> </tr> </thead> <tbody> <tr> <td>4 PLACES</td> <td>± ---</td> <td>± ---</td> </tr> <tr> <td>3 PLACES</td> <td>± ---</td> <td>± ---</td> </tr> <tr> <td>2 PLACES</td> <td>± 0.25</td> <td>± ---</td> </tr> <tr> <td>1 PLACE</td> <td>± 0.25</td> <td>± ---</td> </tr> </tbody> </table>		mm	INCH	4 PLACES	± ---	± ---	3 PLACES	± ---	± ---	2 PLACES	± 0.25	± ---	1 PLACE	± 0.25	± ---	DIMENSION STYLE MM ONLY	TITLE	DVI-I RIGHT ANGLE RECEPTACLE CONNECTOR WITH SCREW AND SHIELDING		
			mm	INCH																			
		4 PLACES	± ---	± ---																			
3 PLACES	± ---	± ---																					
2 PLACES	± 0.25	± ---																					
1 PLACE	± 0.25	± ---																					
		ANGULAR ±1/2° DRAFT WHERE APPLICABLE MUST REMAIN WITHIN DIMENSIONS	APPROVED BY DATE CHECKED BY DATE	MOLEX MOLEX INCORPORATED	MATERIAL NO. 74320-9133 DOCUMENT NO. SD-74320-046	SHEET NO. 1 OF 2																	
				THIS DRAWING CONTAINS INFORMATION THAT IS PROPRIETARY TO MOLEX INCORPORATED AND SHOULD NOT BE USED WITHOUT WRITTEN PERMISSION																			

12 11 10 9 8 7 6 5 4 3 2



RECOMMENDED PCB LAYOUT

Detail1
SCALE 8:1

RECOMMENDED PANEL CUT-OUT
PANEL THICKNESS: 0.76-1.02MM

PLATING OPTIONS:

PLATING OPTION #1:

FRONT SHIELD -- 150u"/3.75um MIN. BRIGHT TIN OVER
50u"/1.27um MIN. NICKEL OVER COPPER FLASH.
BACK SHIELD -- 50u"/1.27um MIN. BRIGHT TIN OVER
50u"/1.27um MIN. NICKEL OVER COPPER FLASH.

.075"/1.91mm CONTACTS -- 30u"/0.75um MIN. SELECT GOLD AND
100u"/2.50um MIN. SELECT TIN
OVER 50u"/1.27um MIN. NICKEL OVERALL.

.100"/2.54mm CONTACTS -- 30u"/0.75um MIN. SELECT GOLD AND
100u"/2.50um MIN. SELECT TIN.
OVER 50u"/1.27um MIN. NICKEL OVERALL.

MICROCROSS GROUND -- 30u"/0.75um MIN. SELECT GOLD AND
100u"/2.50um MIN. SELECT TIN.
OVER 50u"/1.27um MIN. NICKEL OVERALL.

NEW RELEASE	DESCRIPTION	QUALITY SYMBOLS
EC NO: SH2005-0004	DRWN:DXUE 2004/07/14	▽-0
CHKD: 2004/07/14	APPR: YTYAP 2004/07/14	▽C-0
REV A		

GENERAL TOLERANCES (UNLESS SPECIFIED)	
	mm
4 PLACES	± .25
3 PLACES	± .25
2 PLACES	± .25
1 PLACE	± .25
ANGULAR ±1/2°	
DRAFT WHERE APPLICABLE	
MUST REMAIN WITHIN DIMENSIONS	

SCALE 4:1	DESIGN UNITS METRIC
DIMENSION STYLE MM ONLY	
DRAWN BY DXUE	DATE 2004/7/9
CHECKED BY	DATE
APPROVED BY	DATE

THIRD ANGLE PROJECTION	REVISE ON CAD ONLY
TITLE DVI-I RIGHT ANGLE RECEPTACLE CONNECTOR WITH SCREW AND SHIELDING	
MOLEX MOLEX INCORPORATED	
MATERIAL NO. 74320-9133	DOCUMENT NO. SD-74320-046
SHEET NO. 2 OF 2	
THIS DRAWING CONTAINS INFORMATION THAT IS PROPRIETARY TO MOLEX INCORPORATED AND SHOULD NOT BE USED WITHOUT WRITTEN PERMISSION	

11 10 9 8 7 6 5 4 3 2 1