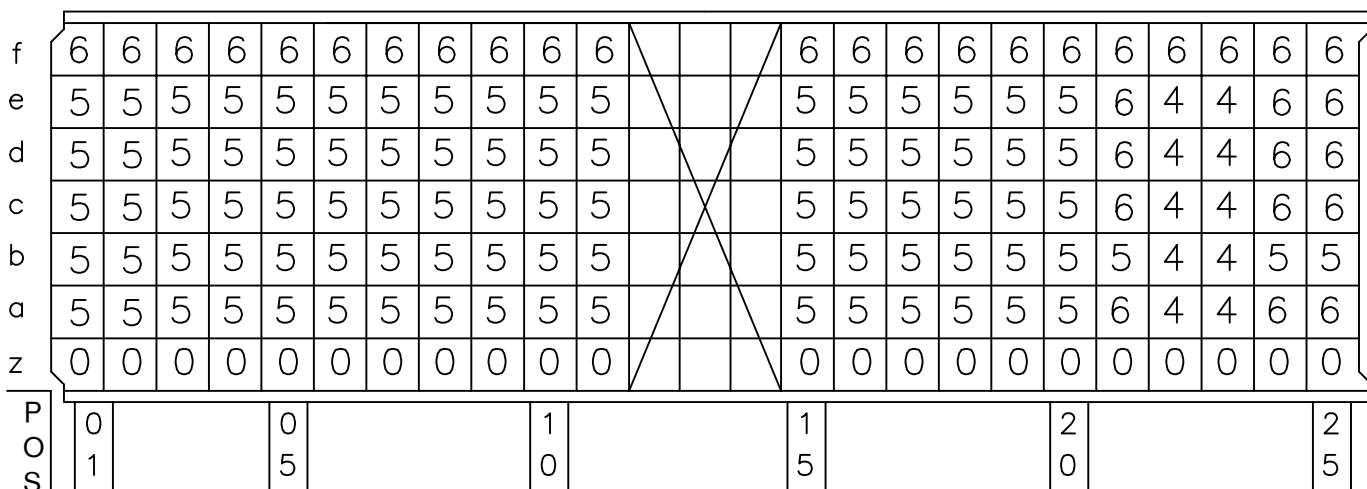
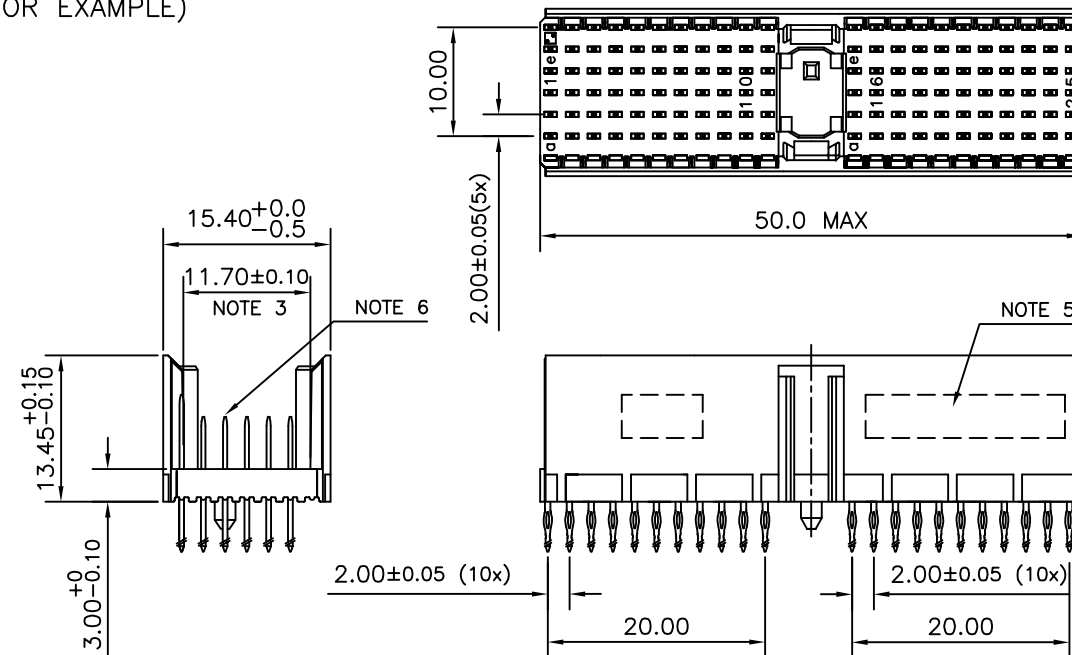


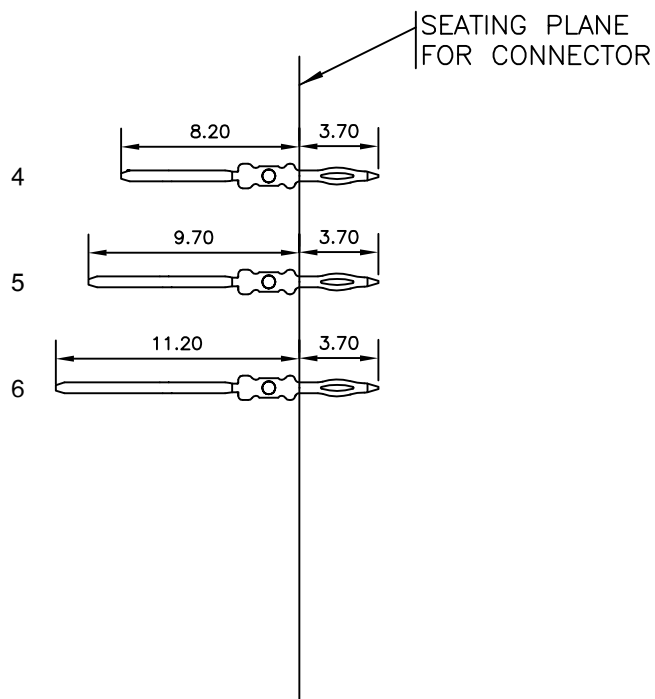
LOADING PATTERN MATING SIDE



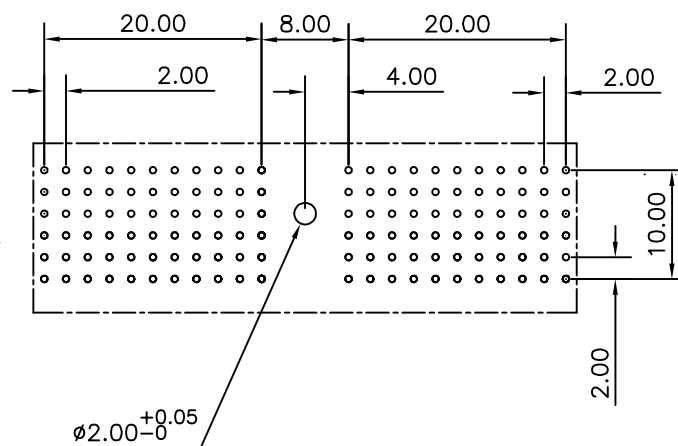
LOADED CONNECTOR ASSEMBLY (FOR EXAMPLE)



CONTACT OVERVIEW



LAY-OUT P.C.B.-HOLE



HM2PN1PDP265 **LEAD FREE INDICATOR : LF = LEAD FREE (DIGIT 15 & 16)**  
**PLATING CODE (DIGIT 13 AND 14)**  
 (REF DRW NO. BS,C , 201844 , 003)

NOTES

- THIS PRODUCT IS CSA APPROVED.
- THIS PRODUCT IS UL RECOGNIZED.
- MEASURED AT THE BOTTOM.
- MATERIAL CONTACT: PHOSPHORBRONZE  
HOUSING: CREAM WHITE GLASS FILLED POLYESTER UL-94V0
- CONNECTOR PRINTED WITH P/N AND DATE CODE.
- FOR ACTUAL CONTACT LOADINGS, SEE LOADING PATTERN MATING SIDE.
- SHAPE OF CONNECTOR HOUSING CAN ALTER DEPENDING ON PRODUCTION LOCATION
- THIS PRODUCT (LF) MEETS EUROPEAN UNION DIRECTIVES AND OTHER COUNTRY REGULATIONS AS DESCRIBED IN GS-22-008
- FOR RECOMMENDED PTH DIMENSIONS REFER DRAWING : BS, A , 201572 , 001

PART NO. HM2PN1PDP265- - -

mat'l. code SEE NOTE 4				surface ISO 1302 <input checked="" type="checkbox"/> ISO 406 ISO 1101		tolerance ISO 406 ISO 1101		projection 		product family MLLIPACS	
litr				ecn no		dr		date		title	
A				105-0139		MINI		2005/08/10		MPACS 5+2R STR HDR PF CONN TYPE A (WIDTH = 15.4 MAX)	
B				106-0099		MINI		2006/07/08			
						angles		linear		scale -	
						0°±1°				MM	
						dr		MINI K VANDANATH 2005/06/14		dwg no	
						enr		BIJU K PAUL 2005/06/14		sheet 1 of 1 size 5	
						chr		BIJU K PAUL 2006/07/08		A3	
						appd		BIJU K PAUL 2006/07/08		BS, C ,203028,260	
										type Product Customer Drawing	
sheet index		revision sheet		B							
		1									