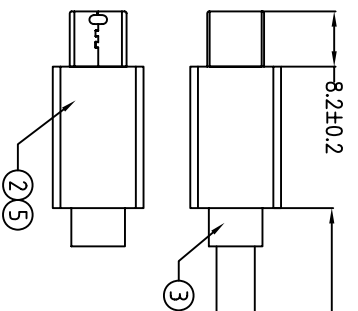
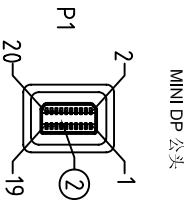
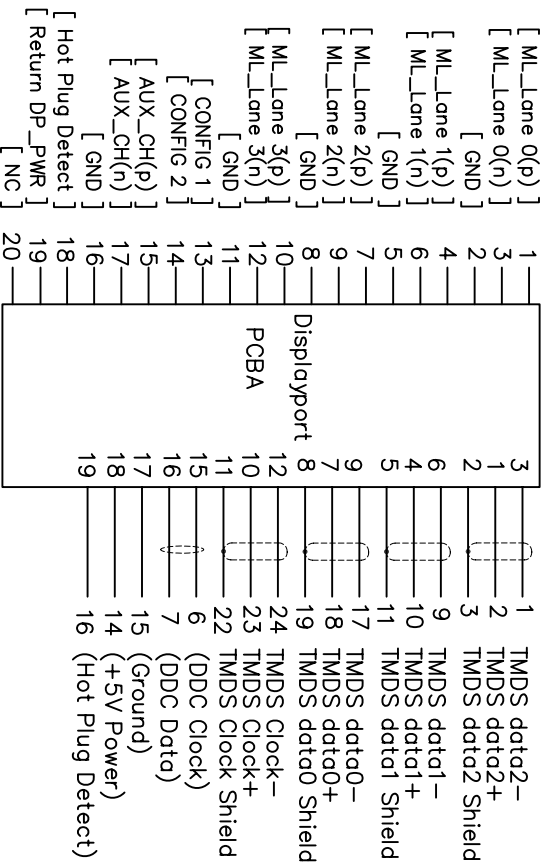
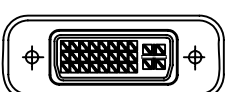
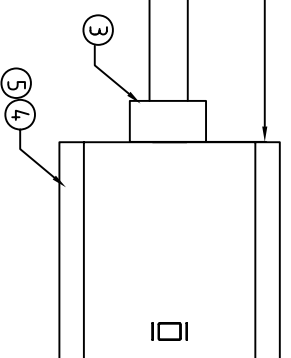


CUSTOMER APPROVED:

DATE:



1. Wiring Diagram.



SHELL _____ SHELL

5	PE	PE INSERMOLDING	10g	
4	CONN	DVI24+5 FEMALE INSULATION WHITE NICKREL PIN G/F W/WHITE COVER W/PCB+IC(NXP3361)	1SET	P2
3	PVC	45P PVC WHITE OVERMOLD	30g	
2	CONN	MINIDP20 MALE INSULATION WHITE NICKREL PIN G/F W/WHITE HOOD	1SET	P1
1	CABLE	UL20276 (32AWG*1P+DW+AL/MY)*5+32AWG*5 C+A+D+B(16/6/0.1AAM) OD5.5 WHITE	1	500MM
NO.	PART NO.	DESCRIPTION	QTY	UNIT/REF
BILL OF MATERIAL				

A	2015044	INITIAL RELEASE	2015/04/14
REV#	ECN#	DESCRIPTION	DATE
Cnc Tech, LLC			
DRAWN	EDWIN LAI	DATE	04/14/15
CHECKED		CUSTOMER P/N:	
APPROVAL		CUSTOMER:	
TITLE		DWN NO.	REV
MINI DP/M TO DVI24+5/F		743-50011-00050	A
SHEET 1 OF 1		DATE	