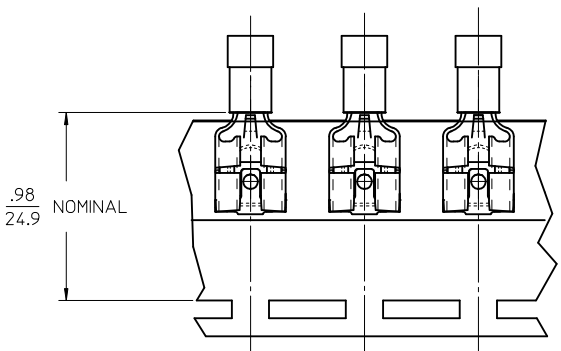
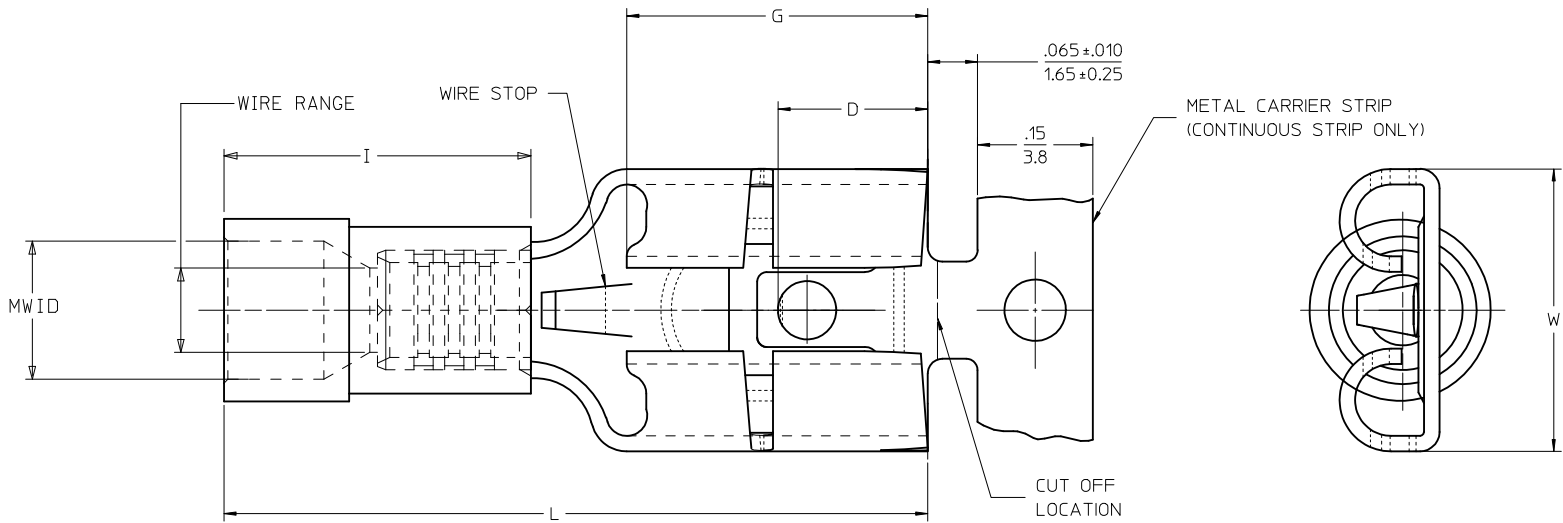


13	12	11	10	9	8	7	6	5	4	3	2	1				
LOOSE PIECE			TAPE MOUNTED		CONTINUOUS STRIP		SPECIFICATIONS									
MATERIAL NUMBER	ENGINEERING NUMBER	MATERIAL NUMBER	ENGINEERING NUMBER	MATERIAL NUMBER	ENGINEERING NUMBER	INS. COLOR	WIRE RANGE AWG	MM ²	FITS MALE TAB SIZE	STOCK THICKNESS	"L" MAX.	"I" MAX.	"W" MAX.	"D" ±.01	"G" NOM.	MWID
192740002	AA-2140-LIF	192740003	AA-2140T-LIF	192740001	AAZ-2140-LIF	RED	22-18/	0.25-1.5	.250x.032 / 6.35x0.81	.016 / 0.41	.87 / 22.0	.42 / 10.7	.307 / 7.80	.156 / 3.96	.31 / 7.9	.13 / 3.3
192740005	BB-2141-LIF	192740006	BB-2141T-LIF	192740004	BBZ-2141-LIF	BLUE	16-14/	1.0-2.5	.250x.032 / 6.35x0.81	.016 / 0.41	.87 / 22.0	.42 / 10.7	.307 / 7.80	.156 / 3.96	.31 / 7.9	.14 / 3.5



PARTS ON TAPE

NOTES:

- MATERIALS:
 TERMINAL: MATTE-TIN PLATED BRASS
 INSULATION: PVC 94V-0,
 SEE CHART FOR COLORS
- PRODUCT SPECIFICATION: PS-19902-012
- MWID = MAXIMUM WIRE INSULATION DIAMETER
- PARTS ARE ROHS COMPLIANT

FERRULE DESCR. CONT P/N EC NO: MNA2009-0761 DRW: ETHRODAHL 2010/03/18 CHKD: JMACNEIL 2010/03/18 APPR: JMACNEIL 2011/01/06	QUALITY SYMBOLS ▽=0 ▽=0	GENERAL TOLERANCES (UNLESS SPECIFIED)		DIMENSION STYLE IN/MM	SCALE 1:1	DESIGN UNITS INCH	THIRD ANGLE PROJECTION
		4 PLACES ± --- ± ---	DRAWN BY ETHRODAHL	DATE 2010/03/18	TITLE QUIXON LOW INSERT FORCE PARTIAL INSUL QUICK DISC INSULKRIMP 22-14 AWG		
		3 PLACES ± --- ± .005	CHECKED BY JMACNEIL	DATE 2010/03/18	MOLEX INCORPORATED		
		2 PLACES ± 0.13 ± .010 1 PLACE ± 0.25 ± .020 ANGULAR ± 1/2°	APPROVED BY JMACNEIL	DATE 2011/01/06	MATERIAL NO. SEE CHART	DOCUMENT NO. SD-19274-001	SHEET NO. 1 OF 1
DRAFT WHERE APPLICABLE MUST REMAIN WITHIN DIMENSIONS		THIS DRAWING CONTAINS INFORMATION THAT IS PROPRIETARY TO MOLEX INCORPORATED AND SHOULD NOT BE USED WITHOUT WRITTEN PERMISSION					