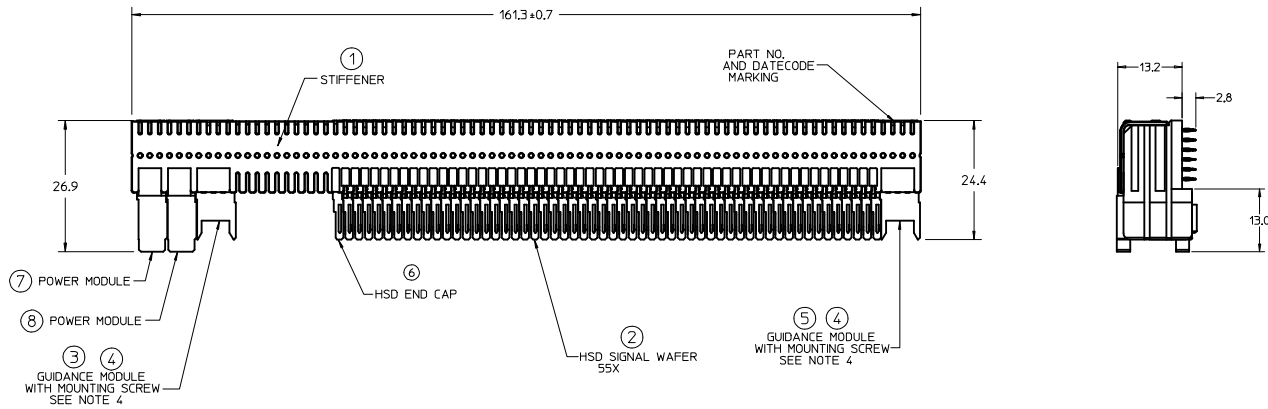
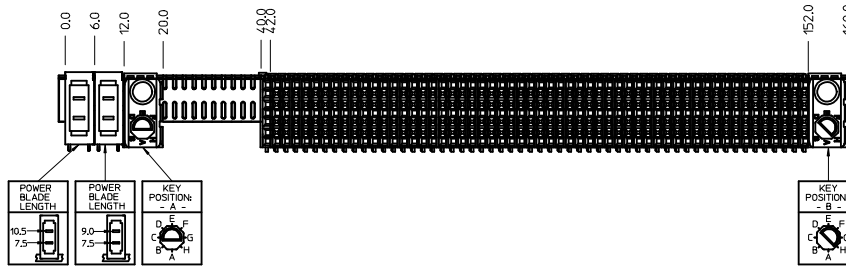


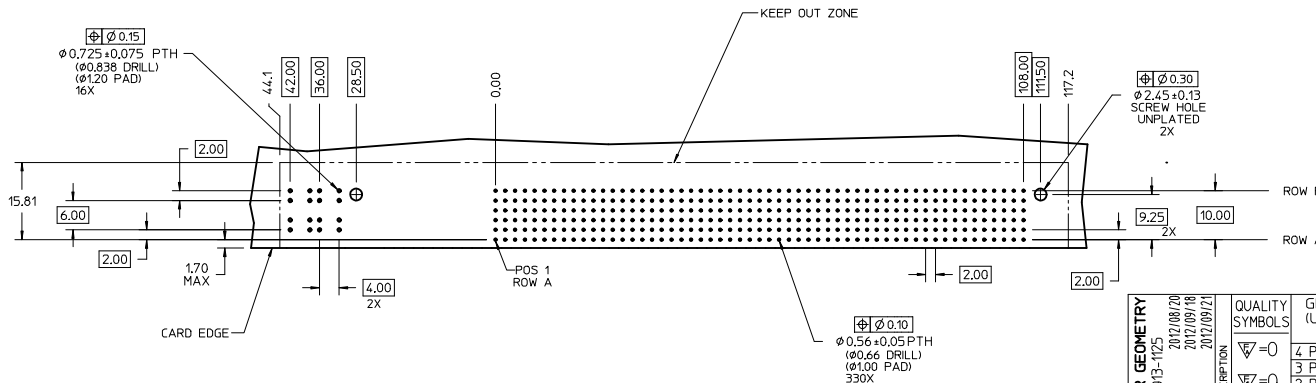
CUSTOMER: ALLIED TELESYN



- NOTES: (UNLESS OTHERWISE SPECIFIED)
- MATERIALS: HOUSING - LIQUID CRYSTAL POLYMER (LCP) GLASS-FILLED, UL94V-0, BLACK
TERMINALS - HIGH PERFORMANCE COPPER ALLOY
STIFFENER - STAINLESS STEEL
 - FINISH: SELECTIVE GOLD (Au) IN CONTACT AREA, 0.76 micrometers MINIMUM THICKNESS, SELECTIVE MATTE TIN (Sn) ON PCB TAILS, NICKEL (Ni) UNDERPLATE OVERALL.
 - REFER TO MOLEX PRODUCT SPECIFICATION PS-74031-999 FOR PERFORMANCE SPECIFICATIONS.
 - PARTS ARE PACKAGED IN TUBES PER PK-70873-5040. MOUNTING SCREWS WILL BE BAGGED WITH EACH CONNECTOR.
 - LABEL MARKED WITH MOLEX PART NUMBER AND DATE CODE. LABEL CAN BE REPLACED BY LASER MARK ON THE STIFFENER.
 - REFER TO MOLEX DOCUMENT SD-74881-002 FOR ADDITIONAL DETAIL ON THE HSD SIGNAL WAFER.
 - REFER TO MOLEX DOCUMENT SD-74037-005 FOR ADDITIONAL DETAIL ON THE GUIDANCE MODULE.
 - REFER TO MOLEX DOCUMENT SD-75885-001 FOR ADDITIONAL DETAIL ON THE POWER MODULE.
 - PRODUCT CONFORMS TO CLASS 'B' REQUIREMENTS OF MOLEX COSMETIC SPECIFICATION PS-45499-002.



| ITEM | PART NUMBER | DESCRIPTION | QTY |
|------|-------------|-------------------------|-----|
| 1 | 74036-0161 | STIFFENER | 1 |
| 2 | 74881-1001 | SIGNAL WAFER - HSD6, LF | 55 |
| 3 | 74037-6001 | POLARIZING/GUIDE MODULE | 1 |
| 4 | 73726-0000 | GUIDE MODULE MNTG SCREW | 2 |
| 5 | 74037-6002 | POLARIZING/GUIDE MODULE | 1 |
| 6 | 74888-0001 | END CAP - HSD6 | 1 |
| 7 | 75885-6130 | POWER MODULE, LF | 1 |
| 8 | 75885-6120 | POWER MODULE, LF | 1 |



DAUGHTERCARD HOLE PATTERN (CONNECTOR SIDE)

LEAD-FREE
PLATING

| REV WAFER GEOMETRY EC NO: UCP2013-1125 DRAWING: CHYK/MOLFE 2012/09/18 APPR: SMILLER 2012/09/21 | QUALITY SYMBOLS | GENERAL TOLERANCES (UNLESS SPECIFIED) | DIMENSION STYLE | SCALE | DESIGN UNITS | THIRD ANGLE PROJECTION | | | | | | | | | | | | | | | | | | |
|--|--|---|-----------------|-------|--------------|------------------------|------|------|----------|------|------|----------|-------|------|---------|-------|------|---------|------|------|---------|-----|--------|--|
| | $\nabla=0$ $\nabla=0$ $\nabla=0$ | <table border="1"> <tr> <th></th> <th>mm</th> <th>INCH</th> </tr> <tr> <td>4 PLACES</td> <td>±---</td> <td>±---</td> </tr> <tr> <td>3 PLACES</td> <td>±---</td> <td>±---</td> </tr> <tr> <td>2 PLACES</td> <td>±0.25</td> <td>±---</td> </tr> <tr> <td>1 PLACE</td> <td>±0.38</td> <td>±---</td> </tr> <tr> <td>0 PLACE</td> <td>±---</td> <td>±---</td> </tr> </table> | | mm | INCH | 4 PLACES | ±--- | ±--- | 3 PLACES | ±--- | ±--- | 2 PLACES | ±0.25 | ±--- | 1 PLACE | ±0.38 | ±--- | 0 PLACE | ±--- | ±--- | MM ONLY | 2:1 | METRIC | |
| | | mm | INCH | | | | | | | | | | | | | | | | | | | | | |
| | 4 PLACES | ±--- | ±--- | | | | | | | | | | | | | | | | | | | | | |
| 3 PLACES | ±--- | ±--- | | | | | | | | | | | | | | | | | | | | | | |
| 2 PLACES | ±0.25 | ±--- | | | | | | | | | | | | | | | | | | | | | | |
| 1 PLACE | ±0.38 | ±--- | | | | | | | | | | | | | | | | | | | | | | |
| 0 PLACE | ±--- | ±--- | | | | | | | | | | | | | | | | | | | | | | |
| MATERIAL NO: 74880-0004 DOCUMENT NO: SD-74880-004 | DRAWN BY: LAURX 03/09/02 CHECKED BY: DATE MARTIN 03/09/02 APPROVED BY: DATE SMILLER 2012/03/22 | TITLE: 6 ROW HSD, LF DAUGHTERCARD SALES DRAWING | | | | SHEET NO: 1 OF 1 | | | | | | | | | | | | | | | | | | |
| DRAFT WHERE APPLICABLE MUST REMAIN WITHIN DIMENSIONS | | | | | | | | | | | | | | | | | | | | | | | | |