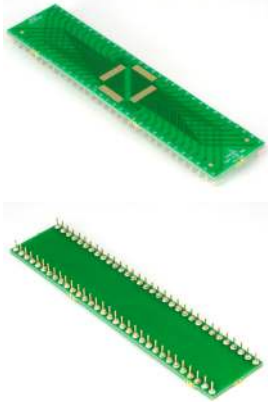
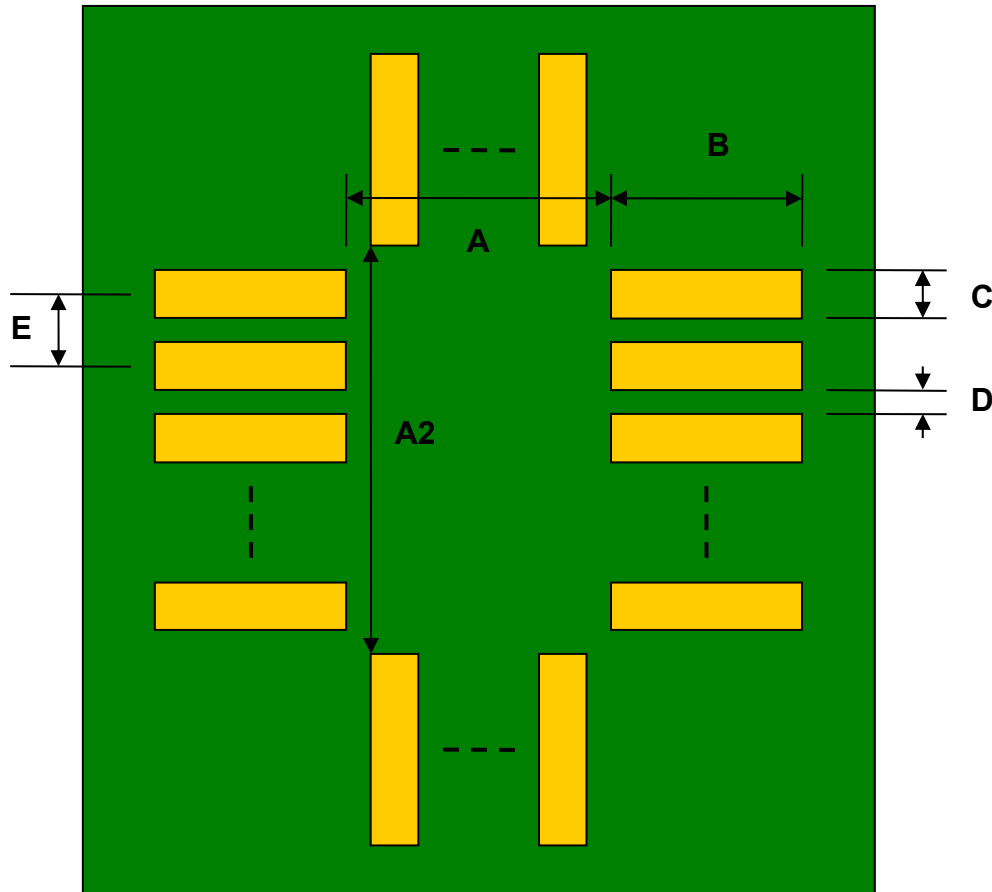


## TQFP-64/ LQFP-64/ VQFP-64 to DIP-64 SMT Adapter (0.5 mm pitch, 10 x 10 mm body) *Compact Series*



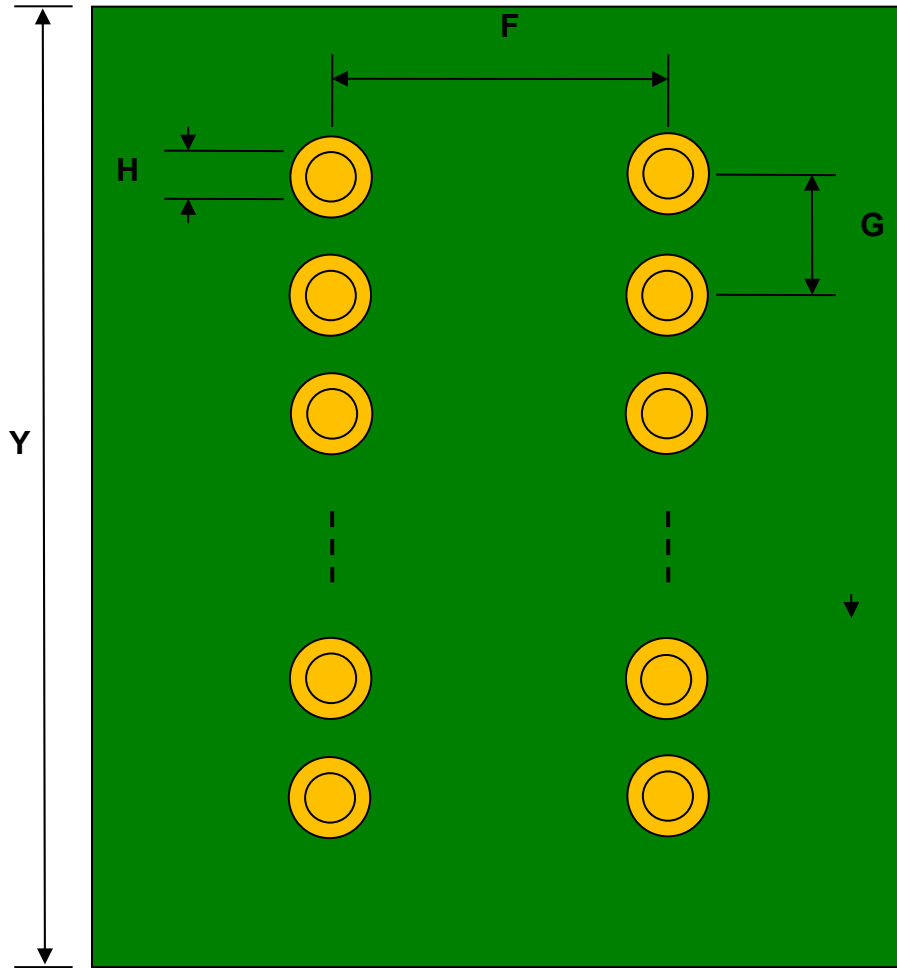
REF.	DIMENSIONS					
	mm			inches		
	MIN.	TYP.	MAX.	MIN.	TYP.	MAX.
A		10.00				
A2		10.00				
B		2.00				
C		0.30				
D		0.20				
E		0.50				
F					0.600	
G					0.100	
H		0.46				
X					0.700	
Y					3.200	

Top View (SMT Footprint)



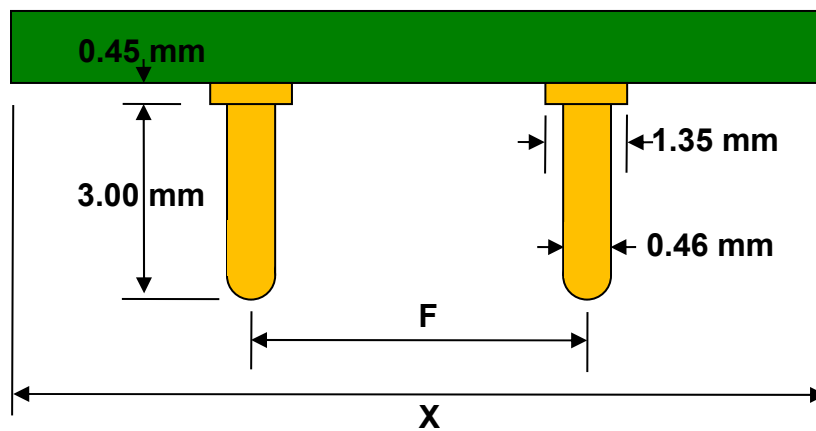
(Representative drawing only - not to scale)

### Bottom View (DIP Pins)



(Representative drawing only - not to scale)

### Side View (DIP Pins)



(Representative drawing only - not to scale)