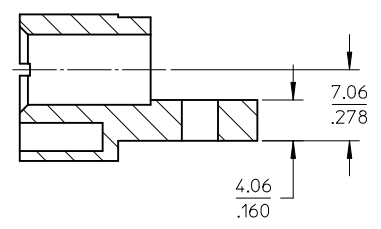
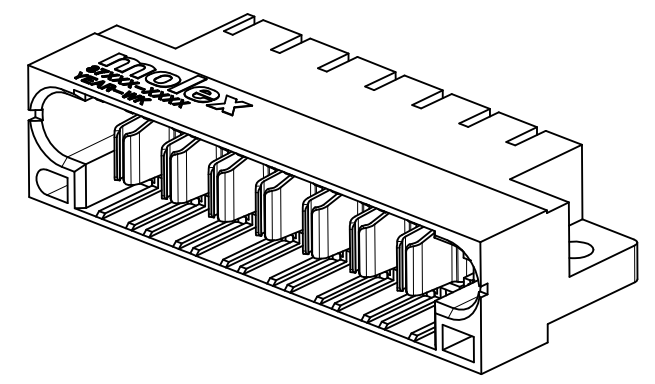
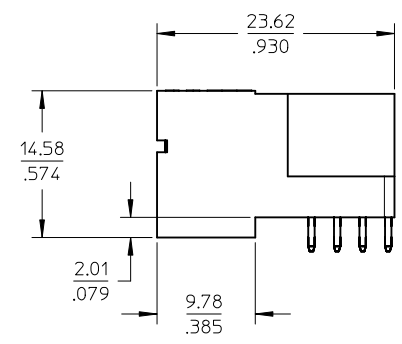
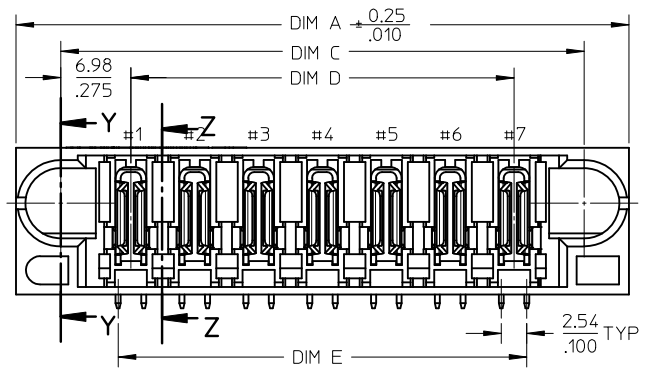


SECTION Z-Z



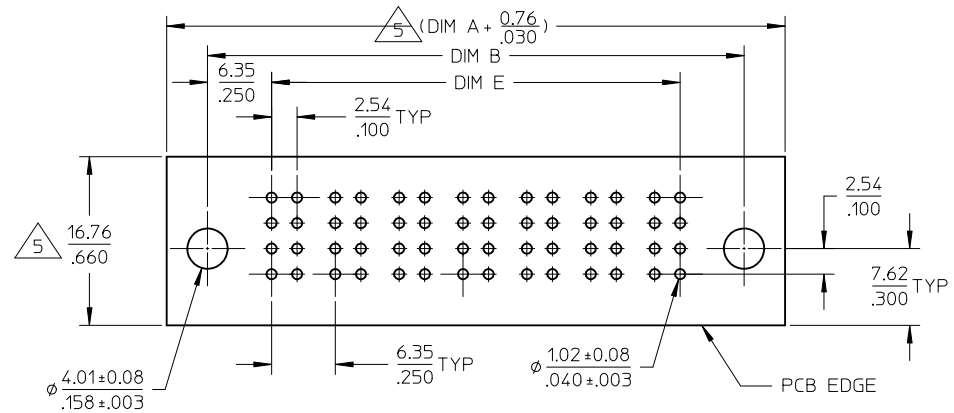
SECTION Y-Y

ADD P/N: 87658-3006 EC NO: S2011-0320 DRW:SKANG 2010/10/06 CHKD:ATSEE 2011/02/15 APPR:MLONG 2011/02/15	QUALITY SYMBOLS $\blacktriangledown = 0$ $\triangleleft = 0$	GENERAL TOLERANCES (UNLESS SPECIFIED)		DIMENSION STYLE MM/IN		SCALE NTS	DESIGN UNITS METRIC	\odot \triangleleft THIRD ANGLE PROJECTION		
			mm	INCH	DRAWN BY	DATE	TITLE			
		4 PLACES	\pm ---	\pm ---	BHLOW	2002/11/01	EXTREME POWERPLUS			
		3 PLACES	\pm ---	\pm .010	CHECKED BY	DATE	ALL POWER HEADER			
			2 PLACES	\pm 0.25	\pm ---	PTLIM	2002/11/07	SCREW MOUNT, R/A, T/H		
			1 PLACE	\pm ---	\pm ---	APPROVED BY	DATE	MOLEX INCORPORATED		
			ANGULAR \pm 3 °			SKTOH	2002/11/12	DOCUMENT NO.		
			DRAFT WHERE APPLICABLE MUST REMAIN WITHIN DIMENSIONS			MATERIAL NO.		SHEET NO.		
D2	REV		SIZE A3		THIS DRAWING CONTAINS INFORMATION THAT IS PROPRIETARY TO MOLEX INCORPORATED AND SHOULD NOT BE USED WITHOUT WRITTEN PERMISSION				1 OF 2	
			SEE TABLE		SD-87658-010					

10	9	8	7	6	5	4	3	2	1
PART NUMBER	PACKAGING	POWER CONFIGURATION NO. OF POWER	DIM A	DIM B	DIM C	DIM D	DIM E		
87658-3005	TRAY	5	48.26 1.900	40.64 1.600	39.37 1.550	25.40 1.000	27.94 1.100		
87658-3006	TRAY	6	54.61 2.150	46.99 1.850	45.72 1.800	31.75 1.250	34.29 1.350		
87658-3007	TRAY	7	60.96 2.400	53.34 2.100	52.07 2.050	38.10 1.500	40.64 1.600		

NOTES:

- MATERIALS: LCP, GLASS FILLED, UL94V-0, COLOUR: BLACK
POWER PINS - COPPER ALLOY
- FINISHES: POWER PINS:
SELECTIVE GOLD IN CONTACT AREA.
THICKNESS= 0.76 MICROMETER/ 30 MICROINCH MINIMUM
SELECTIVE TIN ALLOY IN THE PC TAIL AREA
THICKNESS= 2.54 MICROMETER/.100 MICROINCH MINIMUM
1.27um MINIMUM NICKEL OVEALL UNDERPLATE.
- PRODUCT SPECIFICATION: PS-87631-006.
- SEE SHEET 2 FOR RECOMMENDED PCB LAYOUT AND THICKNESS.
- COMPONENT STAY AWAY ZONE FROM CONNECTOR.
- MANUFACTURER LOGO, PART NUMBER AND YEAR-WEEK CODE.
- 7 POWER CONFIGURATION IS SHOWN FOR ILLUSTRATION ONLY.
POWER CONFIGURATION IS AVAILABLE UP TO 203MM/INCH.
PLEASE CONTACT MOLEX SALES PERSONNEL FOR OTHER CONFIGURATION
AND OPTION NEEDED.



ADD P/N: 87658-3006 EC NO: S2011-0320 DRW:SKANG 2010/10/06 CH:KD:ATSEE 2011/02/15 APPR:MLONG 2011/02/15 REV D2	DESCRIPTION QUALITY SYMBOLS ▽=0 ◻=0	GENERAL TOLERANCES (UNLESS SPECIFIED)		DIMENSION STYLE MM/IN		SCALE NTS	DESIGN UNITS METRIC	THIRD ANGLE PROJECTION			
		4 PLACES ± --- ± ---	3 PLACES ± --- ± .010	2 PLACES ± 0.25 ± ---	1 PLACE ± --- ± ---	ANGULAR ± 3 °	DRAWN BY BHLOW	DATE 2002/11/01	TITLE EXTREME POWERPLUS ALL POWER HEADER SCREW MOUNT, R/A, T/H		
		DRAFT WHERE APPLICABLE MUST REMAIN WITHIN DIMENSIONS					CHECKED BY PTLIM	DATE 2002/11/07	MOLEX INCORPORATED		
							APPROVED BY SKTOH	DATE 2002/11/12	MATERIAL NO. SEE TABLE	DOCUMENT NO. SD-87658-010	SHEET NO. 2 OF 2