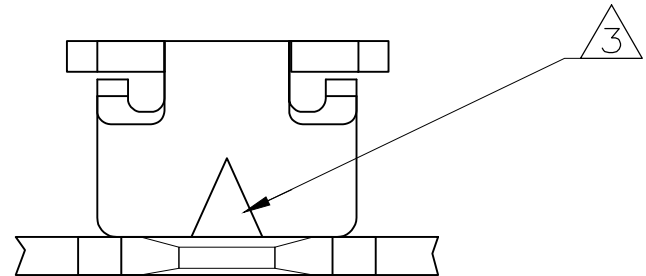


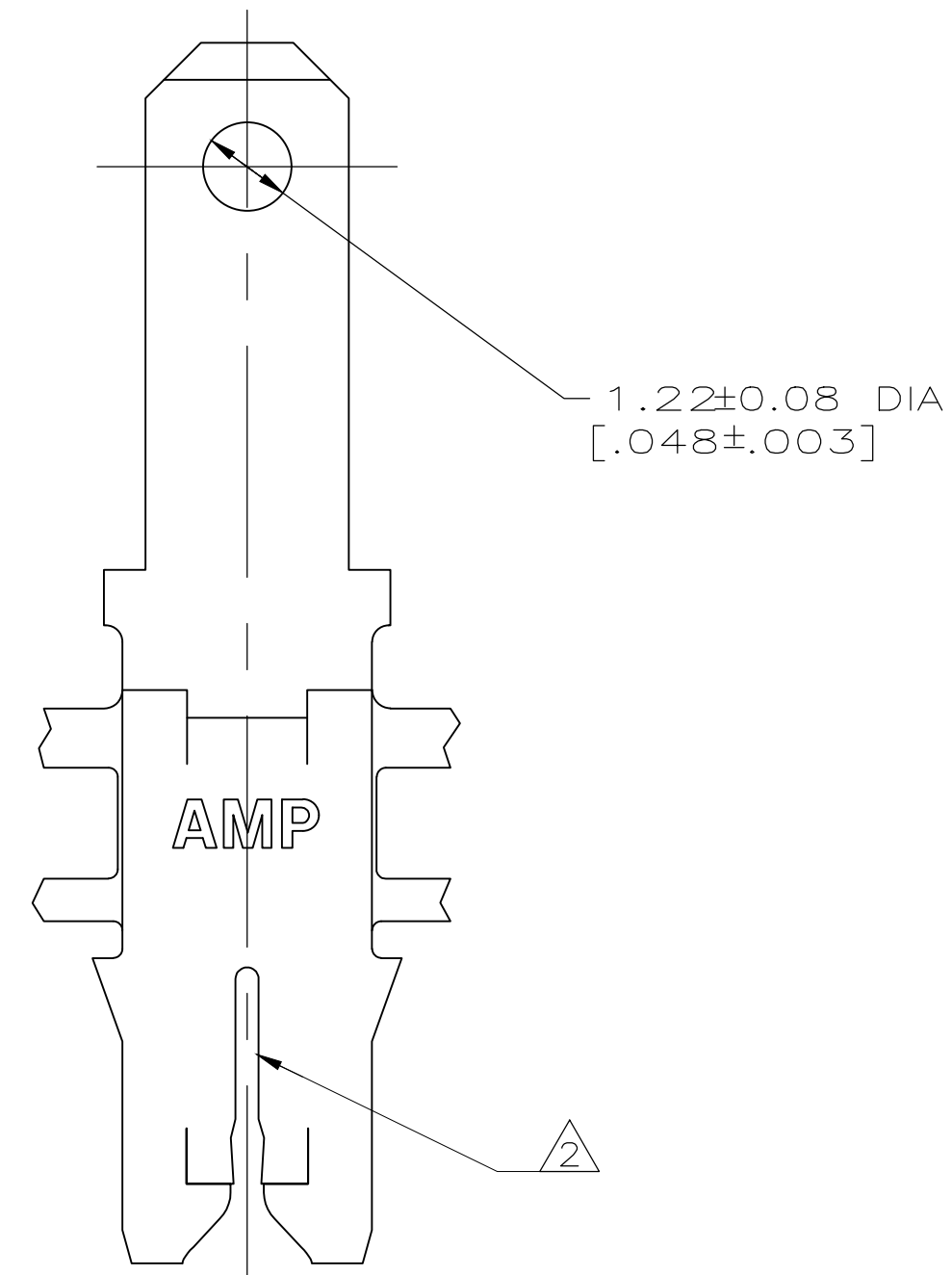
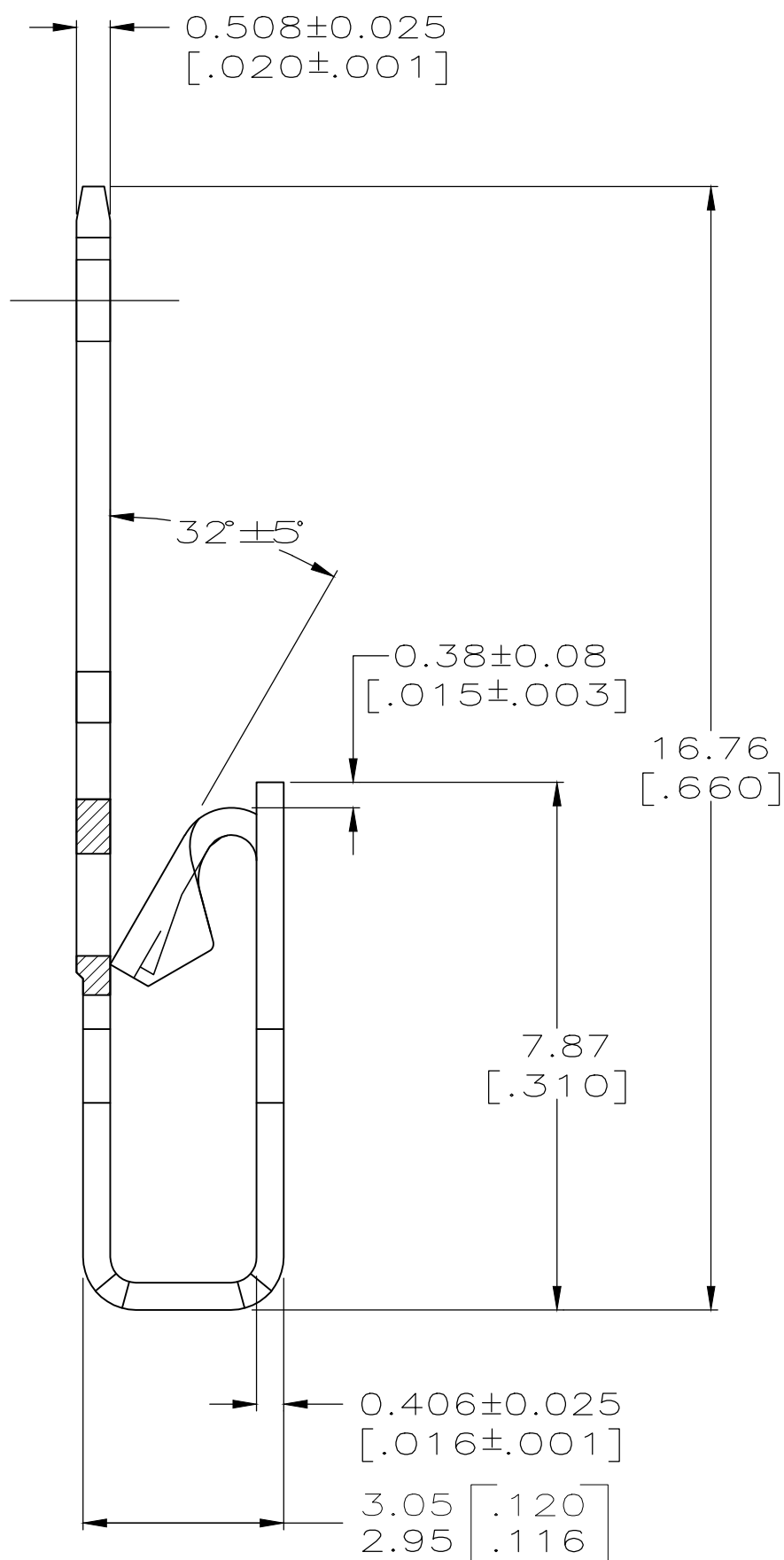
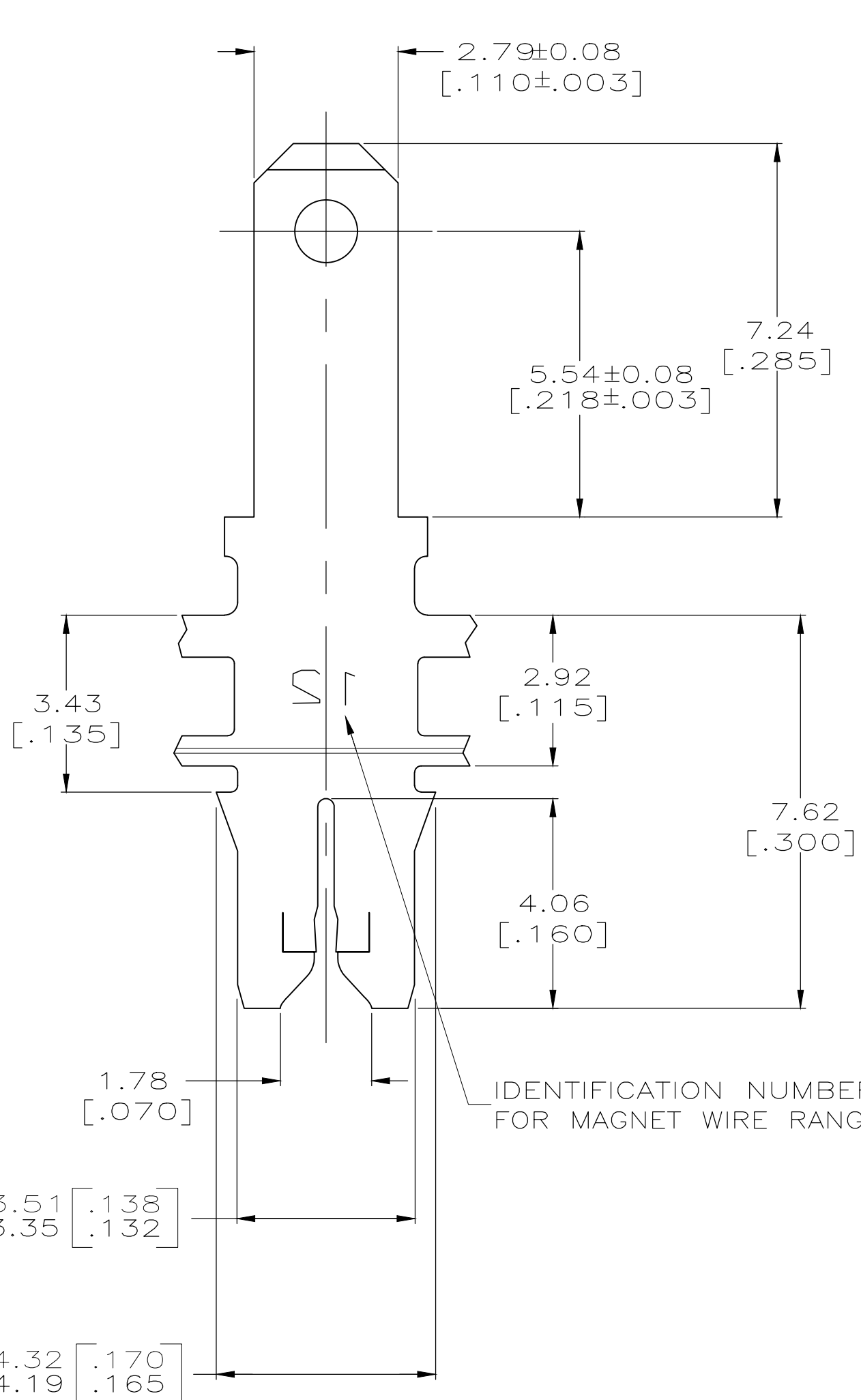
THIS DRAWING IS UNPUBLISHED. RELEASED FOR PUBLICATION  
 © COPYRIGHT - By - ALL RIGHTS RESERVED.

LOC		DIST		REVISIONS			
P	LTR	DESCRIPTION		DATE	DWN	APVD	
AF	50	F2	REVISED PER ECR-19-013909	01OCT2019	PC	MB	



- ⑤ VARNISH RESIST OVER 0.002032 [.000080] MIN TIN PER MIL-T-10727.
- ⑥ 0.002032 [.000080] MIN TIN PER MIL-T-10727.

- 1 CONTINUOUS STRIP ON REELS WITH TERMINALS LOCATED ON 5.59±0.08 [.220±.003] CENTERS.
- ② SLOT ACCEPTS 0.45-0.64mm [#25-#22] AWG COPPER MAGNET WIRE. 2 WIRES OF THE SAME SIZE PER SLOT EXCEPT 0.64mm [#22] AWG WHICH IS ONE WIRE ONLY. ALUMINIUM RANGE 0.57-0.72mm[#23-#21] AWG, ALUMINIUM WIRE RANGE APPLIES FOR POST TIN PLATED PART NUMBERS ONLY.
- ③ POKE-IN ACCEPTS A 0.5-0.8mm<sup>2</sup> [#20-#18] AWG SOLID OR FUSED STRANDED LEAD WIRE.
- 4 AFTER INSERTION INTO PLASTIC HOLDER TAB PORTION MUST BE BENT OVER 45° TO 90° OR POTTED-IN TO PREVENT PULL-OUT WHEN MATING RECEPTACLE IS DISCONNECTED.



THIS DRAWING IS A CONTROLLED DOCUMENT.		DWN 17/DEC/94 MICHAEL S. FEHER	<b>STE</b> TE Connectivity													
DIMENSIONS: INCHES		CHK 19/DEC/94 JEFF R. RUTH														
TOLERANCES UNLESS OTHERWISE SPECIFIED:		APVD 20/DEC/94 NELSON E NEFF	NAME													
<table border="0"> <tr><td>0 PLC</td><td>± -</td></tr> <tr><td>1 PLC</td><td>± -</td></tr> <tr><td>2 PLC</td><td>± 0.25 [.010]</td></tr> <tr><td>3 PLC</td><td>± -</td></tr> <tr><td>4 PLC</td><td>± -</td></tr> <tr><td>ANGLES</td><td>± -</td></tr> </table>		0 PLC	± -	1 PLC	± -	2 PLC	± 0.25 [.010]	3 PLC	± -	4 PLC	± -	ANGLES	± -	PRODUCT SPEC 108-2012	TERMINAL, TAB, POKE-IN/2.79 [.110] FASTON,™ COMBINATION, MAG-MATE™	
0 PLC	± -															
1 PLC	± -															
2 PLC	± 0.25 [.010]															
3 PLC	± -															
4 PLC	± -															
ANGLES	± -															
MATERIAL: BRASS		FINISH: SEE TABLE	APPLICATION SPEC 114-2046	RESTRICTED TO												
		WEIGHT: -	SIZE: A2	CAGE CODE: 00779												
		CUSTOMER DRAWING	DRAWING NO: C-63063	SCALE: 10:1												
			SHEET: 1 OF 1	REV: F2												