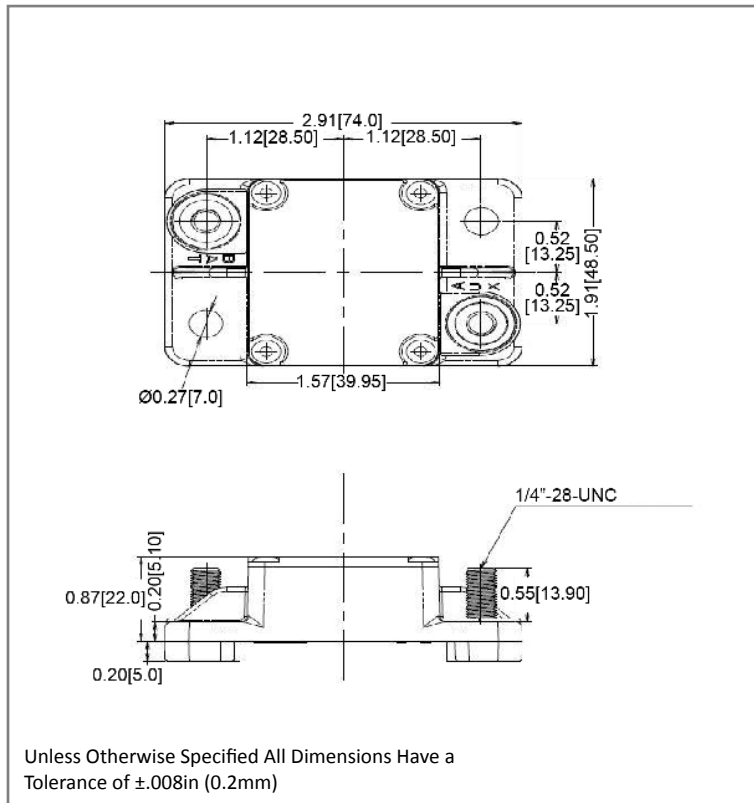


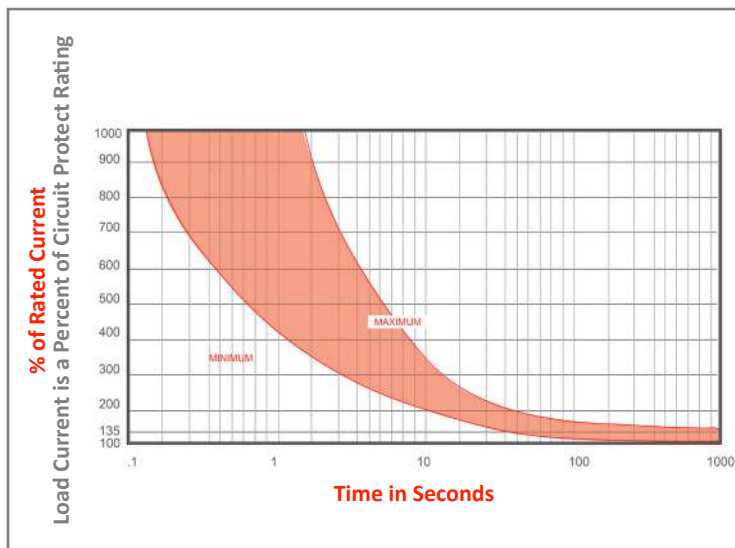
Mechanical Dimensions: Inches [mm]



Part Numbers Information

Optifuse P/N	Current
151025	25A
151030	30A
151040	40A
151050	50A
151060	60A
151070	70A
151080	80A
151090	90A
151100	100A
151120	120A
151135	135A
151150	150A
151180	180A
151200	200A

Time vs. Percent of Rated Current



% of Rated Current	Min Hold Time	Max Hold Time
100%	No Trip (≥ 30 Minutes)	
135%	50s	30m
200%	12s	45s
300%	3.5s	15s

Trip time: Ambient temperature $25^{\circ}\text{C} \pm 3^{\circ}\text{C}$

Electrical Specifications

Voltage Rating	42VDC
Reset Type	Type I - Auto Reset
Interrupting Rating	3000A @ 30VDC
Operation Temperature	-25 °F ~ 180 °F -32 °C ~ 82 °C
Testing	SAE J1625

Material Specifications

Heavy Duty High Amp - Waterproof Circuit Breaker	
Body Material	Thermoset Plastic (UL94V-0)
Terminals Configuration	1/4"-28 Stud
Mounting Type	Surface Mount
Ignition Protected	SAE J1171
Ingress Protection	IP67



Rev **Date of issue** **Revision Notes**

Designed **Approved**

B	06-29-2023	Format Update	RC	OF
---	------------	---------------	----	----