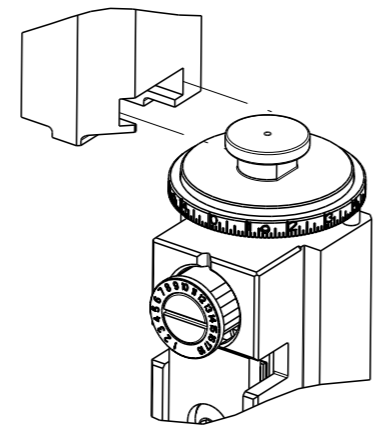


PART NUMBER	REVISION	DESCRIPTION	FEED TYPE
2150607-2	E	FINE CRIMP HEIGHT ADJUST	PNEUMATIC
7-2150607-2	E	PNEUMATIC AND CRIMP TOOLING KIT	PNEUMATIC
7-2150607-7	A	CRIMP TOOLING KIT	-

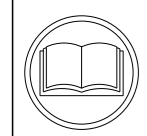
ATLANTIC VERSION TERMINATOR INTERFACE ADAPTER



APPLICATOR DATA		
CRIMP	SIZE	TYPE
WIRE	1.78 mm [.070]	F
APPL INSTRUCTIONS 408-35043		

TERMINAL DATA: TE TERMINAL TE CRIMP SPECIFICATION			
TERMINAL NAME: .110 SERIES FASTON FLAG			
WIRE STRIP LENGTH	INSULATION DIAMETER RANGE		
5.20-5.96 mm [.205-.235 IN]	∅2.20-3.00 mm [.087-.118 IN]		
TERMINAL APPLICATION SPECIFICATION	114-2028	-	-
TERMINALS APPLIED 3/5			
TE TERMINAL	TE TERMINAL	TE TERMINAL	TE TERMINAL
62321-1	63990-1	61549-1	

WIRE SIZE	CRIMP HEIGHT mm [INCH]	CRIMP HEIGHT REFERENCE SETTING
16 AWG	1.37 +/- 0.05 [.054 +/- .002]	4.4
18 AWG	1.19 +/- 0.05 [.047 +/- .002]	6.3
20 AWG	1.04 +/- 0.05 [.041 +/- .002]	7.7
22 AWG	0.97 +/- 0.05 [.038 +/- .002]	8.6



- 1 RECOMMENDED SPARE PARTS
- 2 REFER TO SUPPLIED INSTRUCTION SHEET FOR CLEANING, LUBRICATION AND STORAGE OF APPLICATOR.
- 3 TERMINAL PITCH NOT COMPATIBLE WITH MECHANICAL FEED.
- 4 CRIMP HEIGHT REFERENCE SETTING WAS THE SETTING USED WHEN THE APPLICATOR WAS QUALIFIED AT THE FACTORY. ADJUSTMENT MAY BE NECESSARY WHEN RUNNING APPLICATOR IN THE FIELD.
- 5 TERMINAL LUBRICANT IS RECOMMENDED.
- 6. UNLESS SPECIFIED OTHERWISE TORQUE VALUES SHALL BE USED PER DOCUMENT, 101-35000.

**\*WARNING**  
 ON INSTALLATION, SET WIRE DISC TO CRIMP HEIGHT REFERENCE SETTING FOR LARGEST WIRE SIZE. CRIMP HEIGHT REFERENCE SETTINGS GREATER THAN THE VALUE SHOWN MAY CAUSE DAMAGE TO THE CRIMP TOOLING. REFER TO THE INSTRUCTION SHEET FOR PROPER SETUP AND ADJUSTMENTS.

LOC	DIST	REVISIONS					
A	66	P	LYR	DESCRIPTION	DATE	OWN	APVD
		B		ECR-19-002972	24FEB2019	TB	CT
		C		ECR-21-003458	20MAR2021	TB	RK
		D		ECR-21-004435	15APR2021	FZ	RK
		E		ECR-21-120654	12NOV2021	FJ	TE

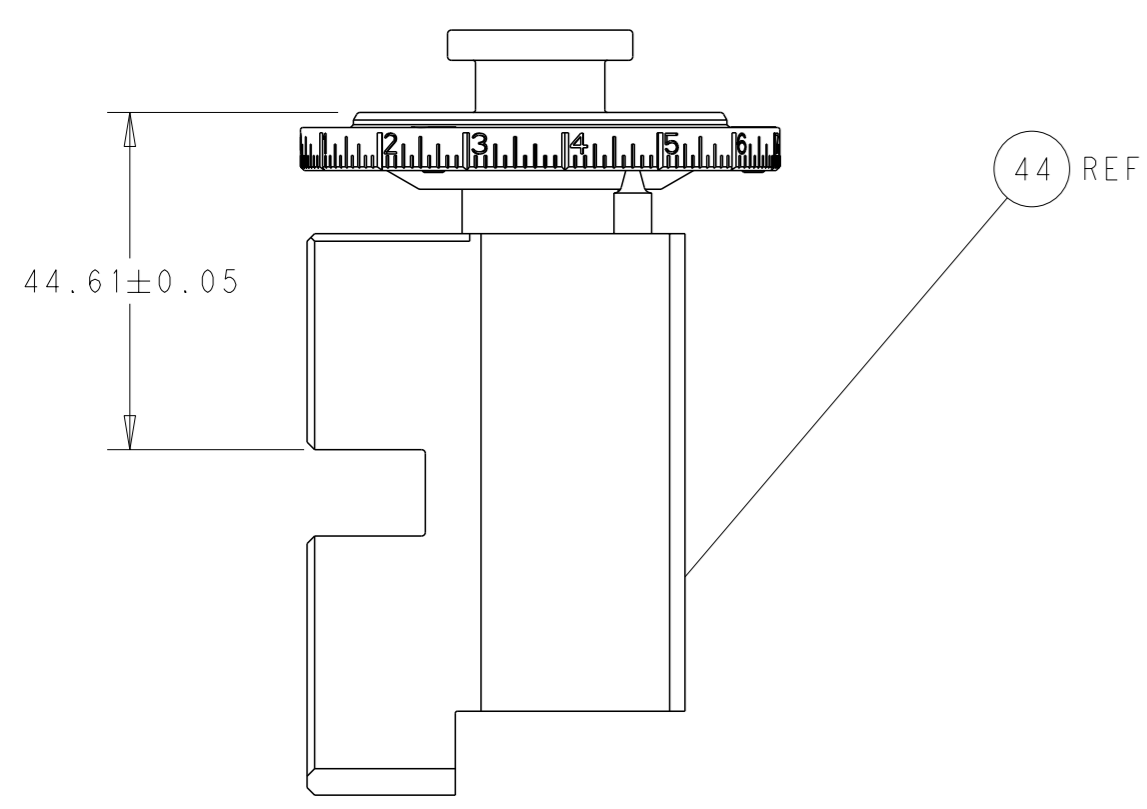
-	1	1	2119641-1	FEED CAM, AIR FEED	248	
-	1	1	2844940-3	AIR FEED MODULE	238	
-	REF	REF	994970-2	COUNTER, MAGNETIC	164	
5	-	1	1	2119955-2	ASSY, LUBRICATOR, END FEED	84
	-	1	1	455888-5	SPACER, CRIMPER	82
	-	1	1	1803607-4	DOCUMENTATION PACKAGE	71
	-	2	2	2-18032-2	SCR, SET, FLT PNT, M3 X 10.0	70
	-	1	1	2119740-1	TAG, IDENTIFICATION	67
	-	2	2	2168078-1	SCREW, DRIVE, RH, RoHS, 2 x .188	66
	-	1	1	2168083-2	SCR, SKT HD CAP, RoHS, M4 X 8.0	60
	-	1	1	5-18022-5	SCR, HEX HD CAP, M4 X 6.0	59
	-	5	5	2168400-1	SHCS, LOW HEAD, RoHS, M4 X 12	57
	-	2	2	1-2168083-4	SCR, SKT HD CAP, RoHS, M4 X 5	56
	-	2	2	5018030-1	NUT, HEX, REG, RoHS, M3	54
	-	2	2	986965-8	NUT, LOCK, HEX, TORQUE (M4)	53
	-	1	1	2063961-2	FEED FINGER	51
	-	1	1	18023-9	SCR, SKT HD CAP M4 X 6.0	49
	-	1	1	2119655-5	APPLICATOR BASIC ASSEMBLY, EF	46
	-	1	1	1803517-1	RAM ASSEMBLY, EF ATLANTIC	44
	-	1	1	1803602-1	SCR, BHSC, RoHS (M8 X 25)	41
	-	7	7	1-18028-2	WASHER, FLAT, REG M4	33
	-	1	1	683385-1	SPACER, STRIP HOLD PLATE	32
	-	2	2	2168083-9	SCR, SKT HD CAP, RoHS, M4 X 20	31
	-	2	2	2168083-2	SCR, SKT HD CAP, RoHS, M4 X 8.0	29
	-	1	1	690455-2	STRIPPER, FRONT CASTING	27
	-	2	2	1-2168083-6	SCR, SKT HD CAP, RoHS, M4 X 35	25
	-	1	1	1752371-5	PLATE, STRIP GUIDE	24
	-	1	1	457144-1	PLATE, STRIP HOLD	23
	-	2	2	22281-9	SPRING, COMPRESSION	22
	-	1	1	1803292-4	DRAG	20
	-	1	1	1803086-5	GUIDE, REAR STRIP	19
	-	1	1	1803100-2	GUIDE, FRONT STRIP	18
	-	4	4	1-2079383-1	SCR, BHSC, RoHS (M6 X 12)	17
1	-	1	1	240644-1	PLATE, REAR SHEAR	11
	-	2	2	1-240645-0	SPACER, SHEAR PLATE	10
1	-	1	1	240642-5	PLATE, FRONT SHEAR	9
1	1	2	1	1-1803002-3	ANVIL, COMBINATION, END FEED	8
1	-	1	1	240651-4	BLADE, SLUG	7
	-	-	-	-	-	6
	-	-	-	-	-	5
	-	-	-	-	-	4
	-	-	-	-	-	3
	-	-	-	-	-	2
1	1	2	1	1-456404-1	CRIMPER, WIRE PREMIUM	1
	-	-	-	-	-	1

DIMENSIONS:		TOLERANCES UNLESS OTHERWISE SPECIFIED:		APPLICATOR DATA		MATERIAL	
mm	0 PLC ±	1 PLC ±	2 PLC ±	3 PLC ±	4 PLC ±	FINISH	★

OWN	CHK	APVD	DATE	NAME	SIZE	CAGE CODE	DRAWING NO	RESTRICTED TO
B. WEAVER	G. BAILEY	G. BAILEY	28 JUL 2015	NAME	A1	00779	2150607	-
Customer Accessible Production Drawing								SCALE 1:1 SHEET 1 OF 4 REV E

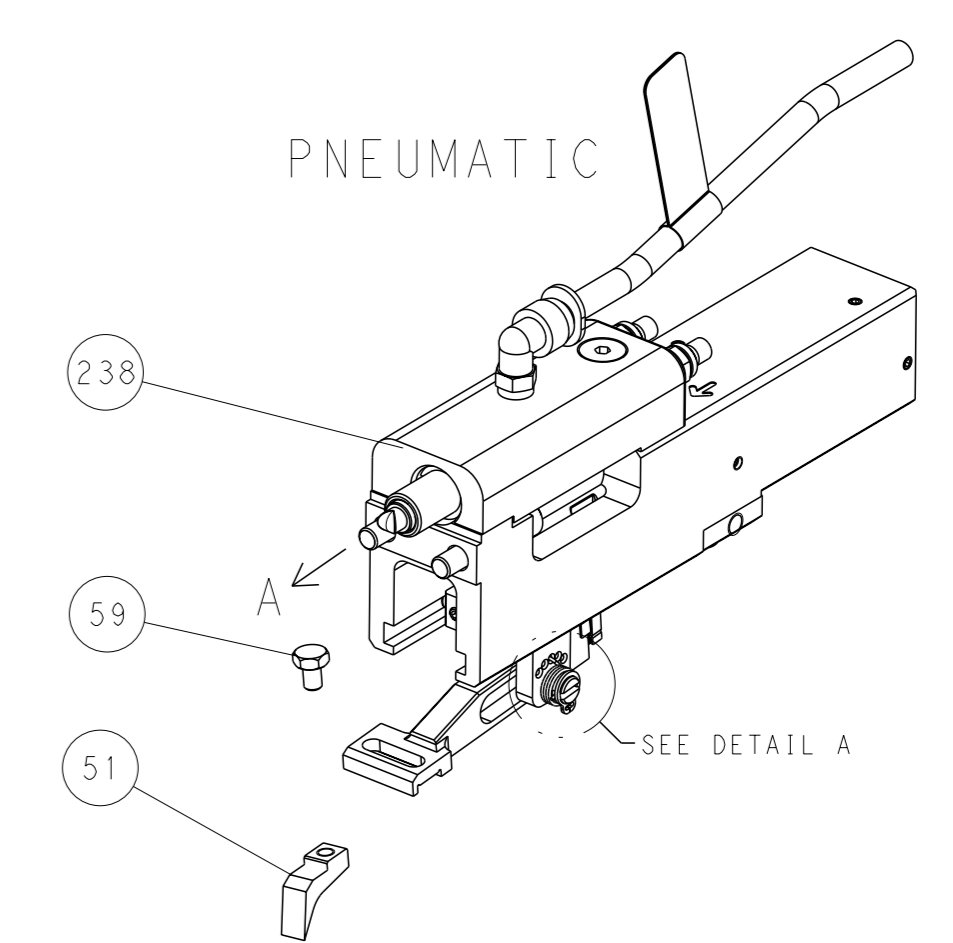
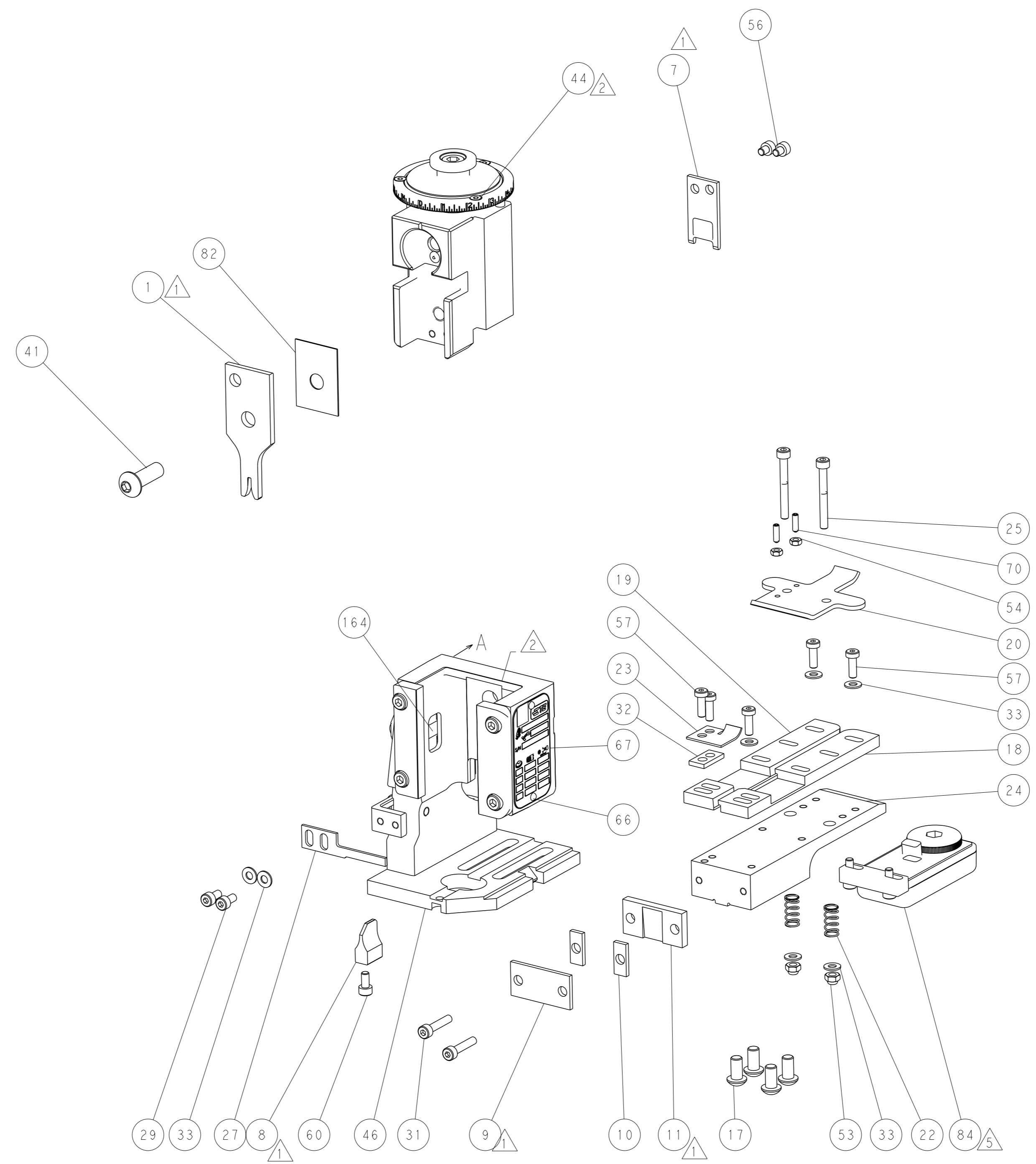
ATLANTIC VERSION  
 Shown on sheets 1 of 4 & 2 of 4  
 (Pacific version shown on sheets 3 of 4 & 4 of 4)

LOC	DIST	REVISIONS					
A	66	P	LYR	DESCRIPTION	DATE	OWN	APVD
		-		SEE SHEET 1			

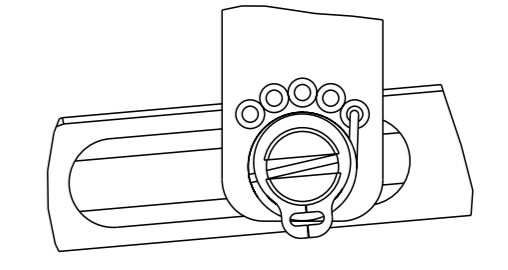


RAM SET-UP

FEED TYPE

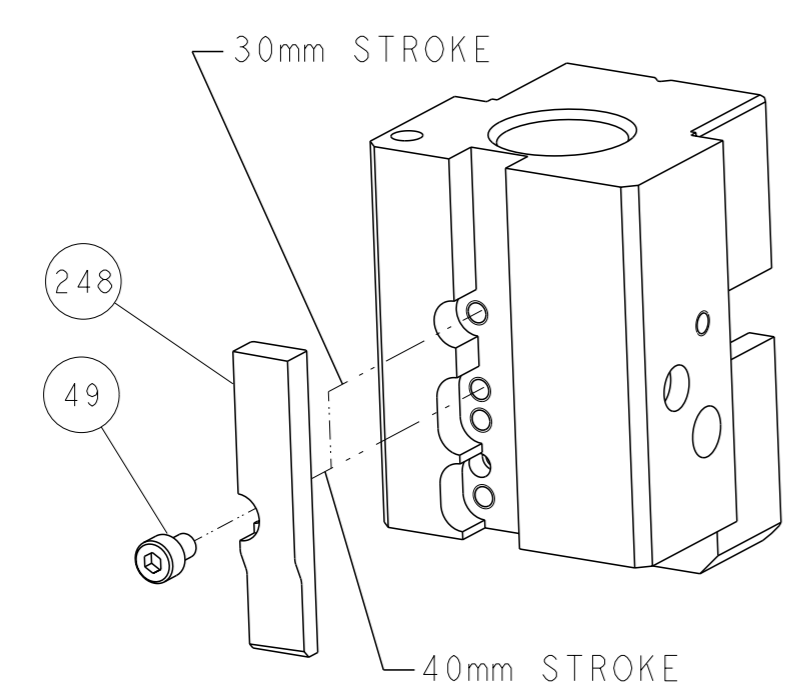


FEED SPRING SETTING POSITION



DETAIL A

CAM POSITION



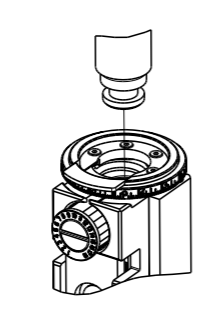
AIR FEED

ATLANTIC VERSION  
 Shown on sheets 1 of 4 & 2 of 4  
 (Pacific version shown on sheets 3 of 4 & 4 of 4)

<small>THIS DRAWING IS A CONTROLLED DOCUMENT FOR TYCO ELECTRONICS CORPORATION. IT IS SUBJECT TO CHANGE AND THE USER MUST CONTACT THE DESIGNATION SHOULD BE CONTACTED FOR THE LATEST REVISION.</small>		OWN: B. WEAVER 28JUL2015 CHK: G. BAILEY 28JUL2015 APVD: G. BAILEY 28JUL2015	TE Connectivity Harrisburg, PA 17105-3608
DIMENSIONS: mm TOLERANCES UNLESS OTHERWISE SPECIFIED: 0 PLC ± 1 PLC ± 2 PLC ± 3 PLC ± 4 PLC ± ANGLES FINISH *		NAME: Ocean End Feed Applicator SIZE: A1 CAGE CODE: 00779 DRAWING NO: C=2150607	RESTRICTED TO: - SCALE: 1:1 SHEET: 2 of 4 REV: E
MATERIAL: - FINISH: - WEIGHT: -		Customer Accessible Production Drawing	

PART NUMBER	REVISION	DESCRIPTION	FEED TYPE
2-2150607-2	E	FINE CRIMP HEIGHT ADJUST	PNEUMATIC
7-2150607-7	A	CRIMP TOOLING KIT	-

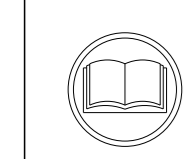
PACIFIC VERSION TERMINATOR  
 INTERFACE ADAPTER



APPLICATOR DATA		
CRIMP	SIZE	TYPE
WIRE	1.78 mm [.070]	F
APPL INSTRUCTIONS 408-35043		

TERMINAL DATA: TE TERMINAL		TE CRIMP SPECIFICATION	
TERMINAL NAME: .110 SERIES FASTON FLAG			
WIRE STRIP LENGTH 5.20-5.96 mm [1.205-.235 IN]		INSULATION DIAMETER RANGE Ø2.20-3.00 mm [1.087-.118 IN]	
TERMINAL APPLICATION SPECIFICATION	114-2028	-	-
TERMINALS APPLIED			
TE TERMINAL	TE TERMINAL	TE TERMINAL	TE TERMINAL
62321-1	63990-1	61549-1	

WIRE SIZE	CRIMP HEIGHT mm [INCH]	CRIMP HEIGHT REFERENCE SETTING
16 AWG	1.37+/-0.05 [1.054+/-0.002]	4.4
18 AWG	1.19+/-0.05 [1.047+/-0.002]	6.3
20 AWG	1.04+/-0.05 [1.041+/-0.002]	7.7
22 AWG	0.97+/-0.05 [1.038+/-0.002]	8.6



- 1 RECOMMENDED SPARE PARTS
- 2 REFER TO SUPPLIED INSTRUCTION SHEET FOR CLEANING, LUBRICATION AND STORAGE OF APPLICATOR.
- 3 TERMINAL PITCH NOT COMPATIBLE WITH MECHANICAL FEED.
- 4 CRIMP HEIGHT REFERENCE SETTING WAS THE SETTING USED WHEN THE APPLICATOR WAS QUALIFIED AT THE FACTORY. ADJUSTMENT MAY BE NECESSARY WHEN RUNNING APPLICATOR IN THE FIELD.
- 5 TERMINAL LUBRICANT IS RECOMMENDED.
- 6 UNLESS SPECIFIED OTHERWISE TORQUE VALUES SHALL BE USED PER DOCUMENT, 101-35000.

**\*WARNING**  
 ON INSTALLATION, SET WIRE DISC TO CRIMP HEIGHT REFERENCE SETTING FOR LARGEST WIRE SIZE. CRIMP HEIGHT REFERENCE SETTINGS GREATER THAN THE VALUE SHOWN MAY CAUSE DAMAGE TO THE CRIMP TOOLING. REFER TO THE INSTRUCTION SHEET FOR PROPER SETUP AND ADJUSTMENTS.

PACIFIC VERSION  
 Shown on sheets 3 of 4 & 4 of 4  
 (Atlantic version shown on sheets 1 of 4 & 2 of 4)

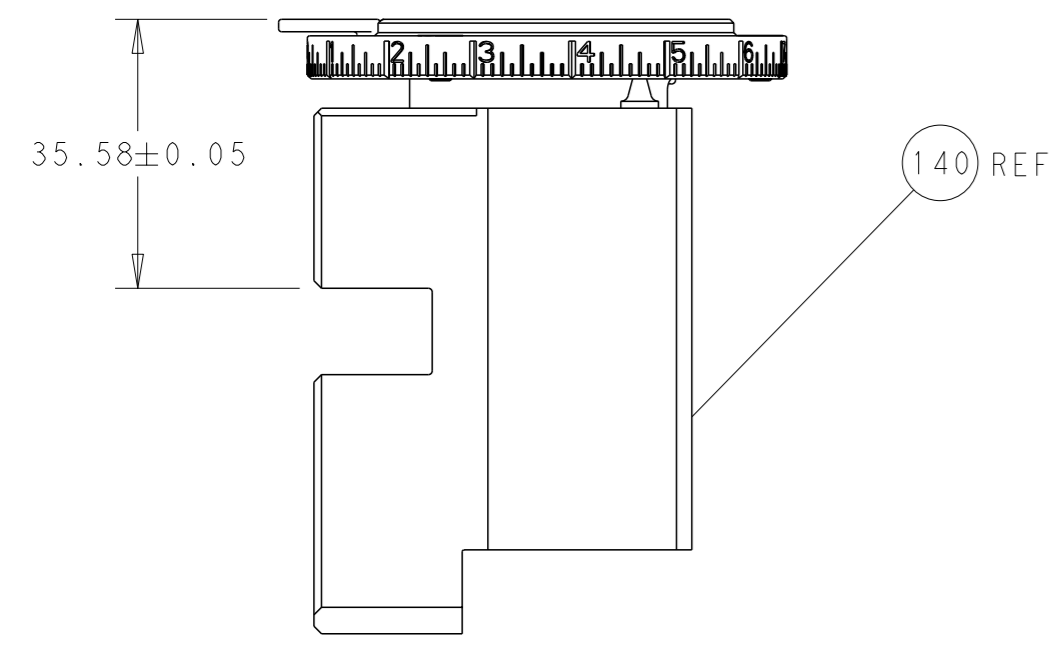
LOC	DIST	REVISIONS					
A	66	P	LYR	DESCRIPTION	DATE	OWN	APVD
-	-	-	-	SEE SHEET 1	-	-	-

-	1	2844940-3	AIR FEED MODULE	238	
-	4	2079383-9	SCR, BHSC, RoHS (M6 X 20)	186	
-	REF	994970-2	COUNTER, MAGNETIC	164	
-	1	2119641-2	FEED CAM, AIR FEED	152	
-	1	2168083-8	SCR, SKT HD CAP, RoHS, M4 X 16	144	
-	1	2119655-6	APPLICATOR BASIC ASSEMBLY, EF	141	
-	1	1803518-1	RAM ASSEMBLY, EF PACIFIC	140	
-	1	2119955-2	ASSY, LUBRICATOR, END FEED	84	
-	1	455888-5	SPACER, CRIMPER	82	
-	1	1803607-4	DOCUMENTATION PACKAGE	71	
-	2	2-18032-2	SCR, SET, FLT PNT, M3 X 10.0	70	
-	1	2119740-1	TAG, IDENTIFICATION	67	
-	2	2168078-1	SCREW, DRIVE, RH, RoHS, 2 x .188	66	
-	1	5-18022-5	SCR, HEX HD CAP, M4 X 6.0	59	
-	5	2168400-1	SHCS, LOW HEAD, RoHS, M4 X 12	57	
-	2	1-2168083-4	SCR, SKT HD CAP, RoHS, M4 X 5	56	
-	2	5018030-1	NUT, HEX, REG, RoHS, M3	54	
-	2	986965-8	NUT, LOCK, HEX, TORQUE (M4)	53	
-	1	2063961-2	FEED FINGER	51	
-	1	18023-9	SCR, SKT HD CAP M4 X 6.0	49	
-	1	1803602-1	SCR, BHSC, RoHS (M8 X 25)	41	
-	7	1-18028-2	WASHER, FLAT, REG M4	33	
-	1	683385-1	SPACER, STRIP HOLD PLATE	32	
-	2	2168083-9	SCR, SKT HD CAP, RoHS, M4 X 20	31	
-	2	2168083-2	SCR, SKT HD CAP, RoHS, M4 X 8.0	29	
-	1	690455-2	STRIPPER, FRONT CASTING	27	
-	2	1-2168083-6	SCR, SKT HD CAP, RoHS, M4 X 35	25	
-	1	1752371-5	PLATE, STRIP GUIDE	24	
-	1	457144-1	PLATE, STRIP HOLD	23	
-	2	22281-9	SPRING, COMPRESSION	22	
-	1	1803292-4	DRAG	20	
-	1	1803086-5	GUIDE, REAR STRIP	19	
-	1	1803100-2	GUIDE, FRONT STRIP	18	
-	1	240644-1	PLATE, REAR SHEAR	11	
-	2	1-240645-0	SPACER, SHEAR PLATE	10	
-	1	240642-5	PLATE, FRONT SHEAR	9	
-	1	1-1803002-3	ANVIL, COMBINATION, END FEED	8	
-	1	240651-4	BLADE, SLUG	7	
-	-	-	-	6	
-	-	-	-	5	
-	-	-	-	4	
-	-	-	-	3	
-	-	-	-	2	
-	1	1-456404-1	CRIMPER, WIRE PREMIUM	1	
-	77	22	PART NO	DESCRIPTION	ITEM NO

DIMENSIONS: mm 0 PLC ± 1 PLC ± 2 PLC ± 3 PLC ± 4 PLC ± ANGLES FINISH ±		TOLERANCES UNLESS OTHERWISE SPECIFIED: 0 PLC ± 1 PLC ± 2 PLC ± 3 PLC ± 4 PLC ± ANGLES FINISH ±		OWN: B. WEAVER 28 JUL 2015 CHK: G. BAILEY 28 JUL 2015 APVD: G. BAILEY 28 JUL 2015 PRODUCT SPEC APPLICATION SPEC		NAME: TE Connectivity Harrisburg, PA 17105-3608 Ocean End Feed Applicator	
MATERIAL: -		WEIGHT: -		SIZE: A1 00779 C=2150607		RESTRICTED TO: -	
Customer Accessible Production Drawing				SCALE: 1:1		SHEET 3 OF 4 REV E	

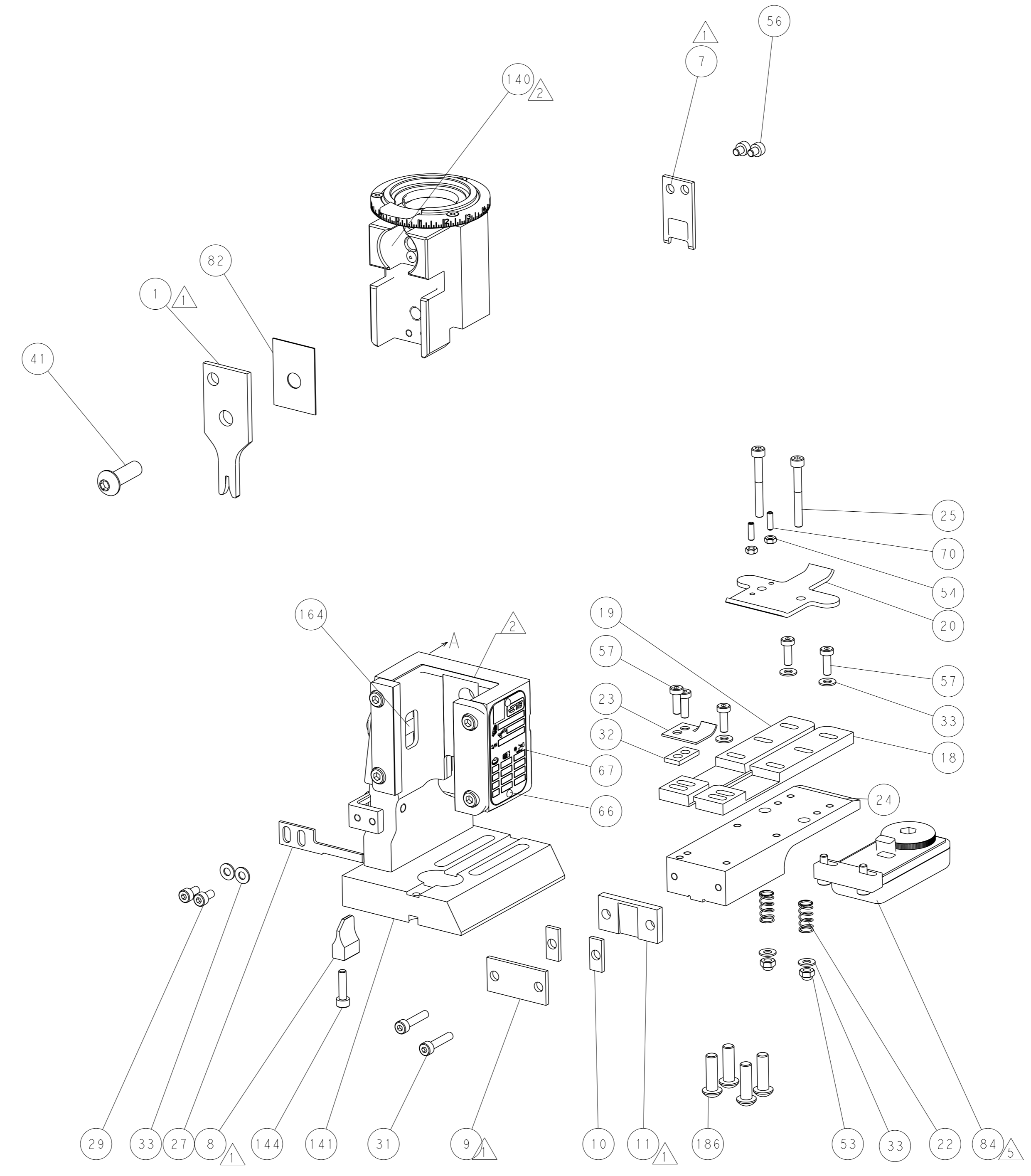
THIS DRAWING IS UNPUBLISHED. RELEASED FOR PUBLICATION 2015  
 COPYRIGHT 2015 BY TYCO ELECTRONICS CORPORATION. ALL RIGHTS RESERVED.

LOC	DIST	REV	DESCRIPTION	DATE	OWN	APVD
A	66		SEE SHEET 1			

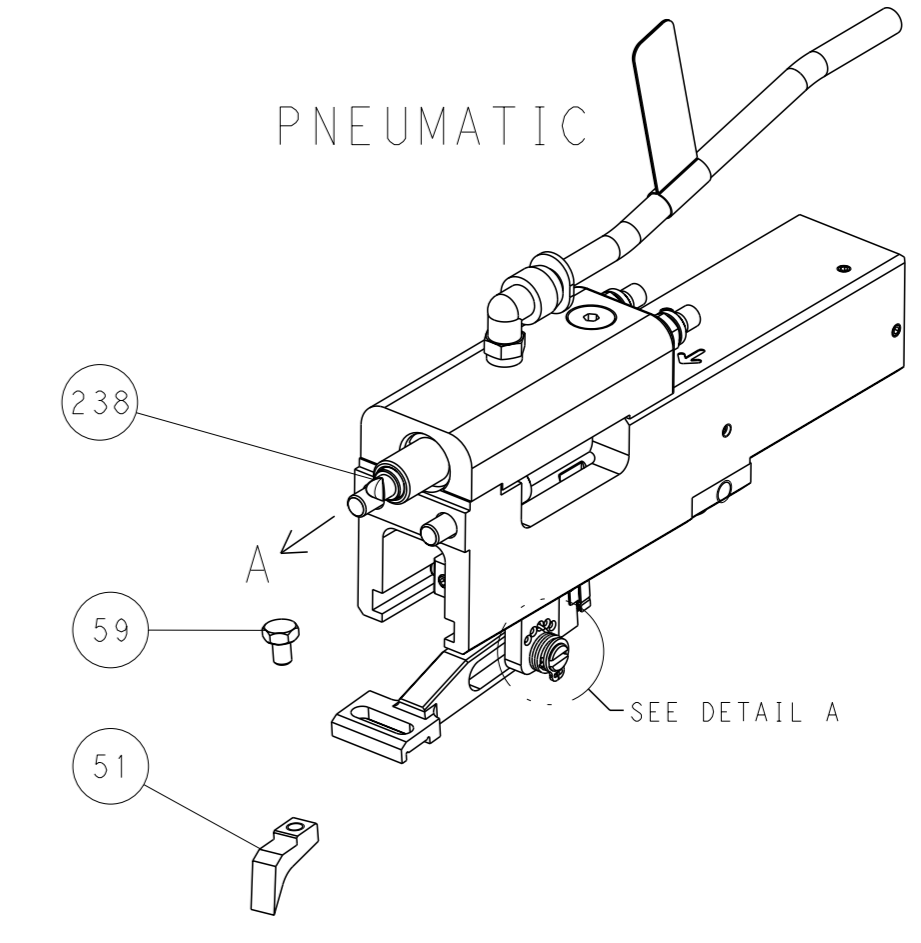


RAM SET-UP

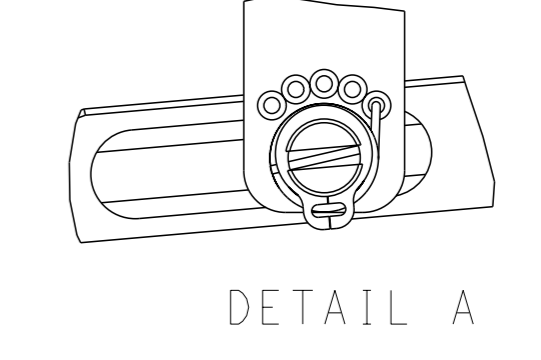
FEED TYPE



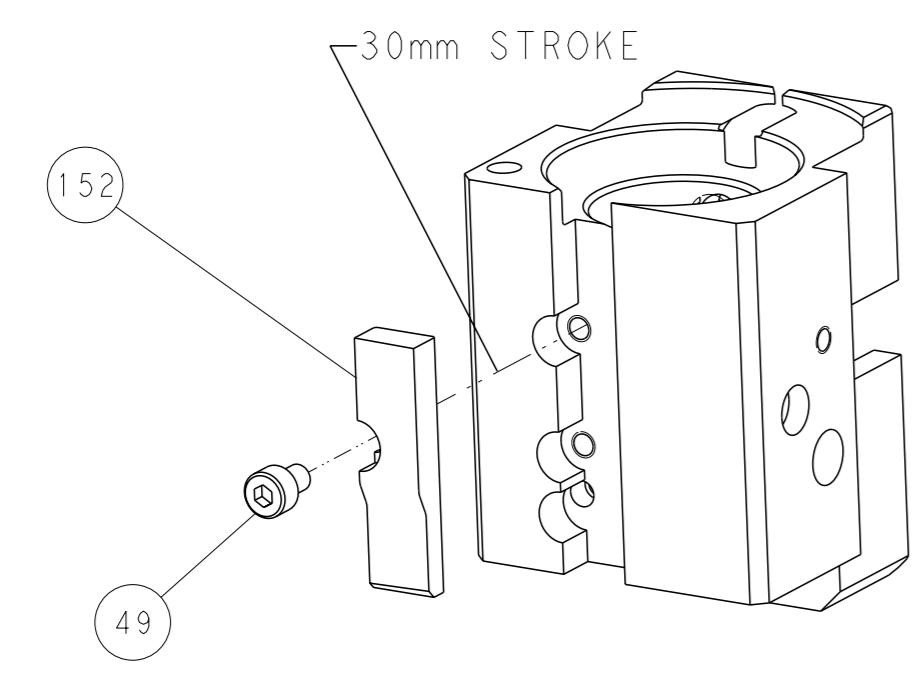
PNEUMATIC



FEED SPRING SETTING POSITION



CAM POSITION



AIR FEED

PACIFIC VERSION  
 Shown on sheets 3 of 4 & 4 of 4  
 (Atlantic version shown on sheets 1 of 4 & 2 of 4)

<small>THIS DRAWING IS A CONTROLLED DOCUMENT FOR TYCO ELECTRONICS CORPORATION. IT IS SUBJECT TO CHANGE AND TO PATENT AND INTELLECTUAL PROPERTY DESIGNATION SHOULD BE CONTACTED FOR THE LATEST REVISION.</small>		OWN: B. WEAVER 28 JUL 2015 CHK: G. BAILEY 28 JUL 2015 APVD: G. BAILEY 28 JUL 2015	NAME: TE Connectivity Harrisburg, PA 17105-3608
DIMENSIONS: mm TOLERANCES UNLESS OTHERWISE SPECIFIED: 0 PLC ± 1 PLC ± 2 PLC ± 3 PLC ± 4 PLC ± ANGLES FINISH ±	APPLICATION SPEC: - WEIGHT: - SCALE: 1:1 SHEET: 4 of 4 REV: E	PRODUCT SPEC: - APPLICATION SPEC: - WEIGHT: - SCALE: 1:1 SHEET: 4 of 4 REV: E	SIZE: A1 CAGE CODE: 00779 DRAWING NO: C=2150607 RESTRICTED TO: -
Customer Accessible Production Drawing			