

## Evaluating the **ADP5034** TSSOP Micro Power Management Unit (Micro PMU)

### FEATURES

- Full featured evaluation board for the **ADP5034** TSSOP
- Standalone capability
- Simple device measurements, including line and load regulation, demonstrable with
  - A single voltage supply
  - A voltmeter
  - An ammeter
  - Load resistors
- Easy access to external components
- Cascading options to supply the low dropout (LDO) regulator from either buck regulator
- Dedicated enable option for each channel
- Mode option to change buck regulators from power save mode (PSM) to pulse-width modulation (PWM) operation

### GENERAL DESCRIPTION

This user guide describes the hardware for the evaluation of the **ADP5034** and includes detailed schematics and PCB layouts. The **ADP5034** is available in either a 24-lead LFCSP package or a 28-lead TSSOP package. Note that this user guide refers to the **ADP5034** TSSOP evaluation board, **ADP5034RE-EVALZ**. Refer to **UG-271** for information on the **ADP5034** LFCSP.

The **ADP5034** TSSOP evaluation board has two step-down regulators with two LDO regulators that enable evaluation of the **ADP5034**. The evaluation board is available in an adjustable voltage option.

Full details on the **ADP5034** are provided in the **ADP5034** data sheet available from Analog Devices, Inc., which must be consulted in conjunction with this evaluation board user guide.

### DIGITAL PICTURE OF THE **ADP5034** TSSOP EVALUATION BOARD

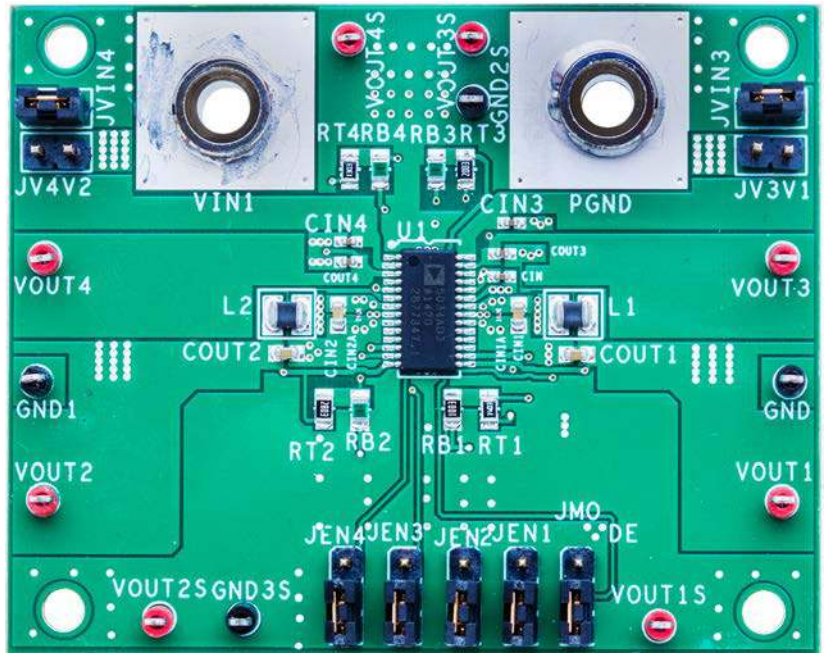


Figure 1.

**TABLE OF CONTENTS**

Features ..... 1  
 General Description ..... 1  
 Digital Picture of the ADP5034 TSSOP Evaluation Board ..... 1  
 Revision History ..... 2  
 Using the Evaluation Board ..... 3  
     Powering Up the Evaluation Board ..... 3  
     Measuring Evaluation Board Performance ..... 4  
 Measuring Output Voltage ..... 8

Measuring Ground Current .....9  
     Measuring Ground Current Consumption of LDO Regulators  
     .....9  
 Evaluation Board Schematic and Artwork ..... 10  
 Ordering Information ..... 13  
     Bill of Materials ..... 13  
 Related Links ..... 13

**REVISION HISTORY**

**4/2017—Rev. 0 to Rev. A**

Changes to General Description Section and Figure 1 ..... 1  
 Changes to Enable Section, Table 1, and Turning on the  
 Evaluation Board Section ..... 3  
 Changes to Figure 4 ..... 4  
 Added Figure 7 and Figure 9; Renumbered Sequentially ..... 5  
 Changes to Measuring Load Regulation of Buck Regulator  
 Section, Figure 8, Measuring Line Regulation of Buck Regulator  
 Section, and Figure 10 ..... 5

Added Figure 11 .....6  
 Changes to Measuring Efficiency of Buck Regulator Section and  
 Figure 12 Caption .....6  
 Moved Measuring Ground Current Consumption of LDO  
 Regulators Section .....9  
 Changes to Figure 16 ..... 11  
 Changes to Table 3 ..... 12

**8/2012—Revision 0: Initial Version**

## USING THE EVALUATION BOARD

### POWERING UP THE EVALUATION BOARD

The [ADP5034](#) TSSOP evaluation board, [ADP5034RE-EVALZ](#), is supplied fully assembled and tested. Before applying power to the evaluation board, follow the procedures in this section.

#### Enable

Each channel has its own enable pin (EN1, EN2, EN3, and EN4), which must be pulled high via the corresponding jumpers to enable that channel (see Table 1).

**Table 1. Channels of the Enable Jumper**

Channel	Enable Jumper
1	JEN1
2	JEN2
3	JEN3
4	JEN4

#### Jumper JMODE (MODE)

Jumper JMODE, as shown in Figure 1, connects the MODE pin of the device to either ground or VIN1. To force Buck 1 and Buck 2 into forced PWM operation, shunt the center contact of Jumper JMODE to the top pin header to pull the MODE pin high to VIN1. To allow Buck 1 and Buck 2 to operate in automatic PWM/PSM operation, shunt the center contact of JMODE to the bottom pin header to pull the MODE pin low to PGND on the [ADP5034RE-EVALZ](#).

#### Input Power Source

If the input power source includes a current meter, use that meter to monitor the input current. VIN1 directly connects to AVIN and VIN2. Attach a header on JVIN3 to connect the supply of LDO1 to VIN1, and attach a header on JVIN4 to connect the supply of LDO2 to VIN1. Connect the positive terminal of the power source to VIN1 on the evaluation board and the negative terminal of the power source to PGND.

If the power source does not include a current meter, connect a current meter in series with the input source voltage. Connect the positive lead (+) of the power source to the ammeter positive (+) connection, the negative lead (–) of the power source to PGND on the evaluation board, and the negative lead (–) of the ammeter to VIN1 on the board. Be aware that the current meters add resistance to the input source, and this voltage reduces with high output currents.

#### Output Load

Connect an electronic load or resistor to set the load current. If the load includes an ammeter, or if the current is not measured, connect the load directly to the evaluation board, with the positive (+) load connected to one of the channels. For example, connect the Buck 1 output, VOUT1, and the negative (–) load connection to PGND.

If an ammeter is used, connect it in series with the load. Connect the positive (+) ammeter terminal to the evaluation board for Buck 1, VOUT1, the negative (–) ammeter terminal to the positive

(+) load terminal, and the negative (–) load terminal to the evaluation board at PGND.

#### Input and Output Voltmeters

Measure the input and output voltages with voltmeters. Make sure to connect the voltmeters to the appropriate evaluation board terminals and not to the load or power sources themselves.

If the voltmeters are not connected directly to the evaluation board, the measured voltages are incorrect due to the voltage drop across the leads and/or connections between the evaluation board, the power source, and/or the load.

Connect the input voltage measuring voltmeter positive terminal (+) to the evaluation board at VIN1, and input voltage measuring voltmeter negative (–) terminal to the evaluation board at PGND.

Connect the output voltage measuring voltmeter positive (+) terminal to the evaluation board at VOUT1 to measure the output voltage of Buck 1, and connect the output voltage measuring voltmeter negative (–) terminal to the evaluation board at GND.

#### Turning On the Evaluation Board

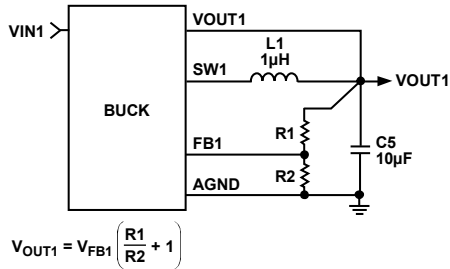
When the power source and load are connected to the evaluation board, the board can be powered for operation. Ensure the following:

- The power source voltage for the buck regulators (VIN1, VIN2) is from 2.3 V to 5.5 V.
- The power source voltage for the LDO regulators (VIN3, VIN4) is from the LDO output voltage + 0.5 V (or 1.7 V, whichever is greater) to 5.5 V.
- The voltage supplied on VIN3 and VIN4 must be equal to or less than the voltage supplied on VIN1 and VIN2.
- The desired channel is enabled and monitors the output voltage.

If the load is not enabled, enable the load; check that it is drawing the proper current and that the output voltage maintains voltage regulation.

#### Setting the Output Voltage of the Buck Regulators

The buck output voltage is set through external resistor dividers, shown in Figure 2 for Buck 1. The output voltage can optionally be factory programmed to default values as indicated in the data sheet. In this event, R1 and R2 are not needed, and FB1 can be left unconnected. In all cases, VOUT1 must be connected to the output capacitor. FB1 is 0.5 V.

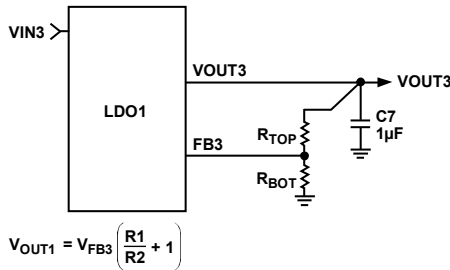


$$V_{OUT1} = V_{FB1} \left( \frac{R1}{R2} + 1 \right)$$

Figure 2. BUCK1 External Output Voltage Setting

**Setting the Output Voltage of the LDO Regulators**

Each LDO output voltage is set through external resistor dividers, as shown in Figure 3, for LDO1. The output voltage can optionally be factory programmed to default values as indicated in the ADP5034 data sheet. In this event, FB3 must be connected to the top of the capacitor on VOUT3 by placing a 0 Ω resistor on R<sub>TOP</sub>, and leave R<sub>BOT</sub> unpopulated. Refer to Table 2 for the corresponding 0 Ω resistor placements on R<sub>TOP</sub> per channel.



$$V_{OUT1} = V_{FB3} \left( \frac{R1}{R2} + 1 \right)$$

Figure 3. LDO1 External Output Voltage Setting

**External Resistor Divider Setting for Buck and LDO Regulators**

The ADP5034 TSSOP evaluation boards are supplied with fixed resistor dividers with values chosen for a target output voltage. Varying the resistor values of the resistor divider networks varies the output voltage accordingly.

Table 2. External Resistor Dividers

Resistor Divider	Buck 1	Buck 2	LDO1	LDO2
R <sub>TOP</sub>	RT1	RT2	RT3	RT4
R <sub>BOT</sub>	RB1	RB2	RB3	RB4

**MEASURING EVALUATION BOARD PERFORMANCE**

**Measuring Output Voltage Ripple of Buck Regulators**

To observe the output voltage ripple of Buck 1, place an oscilloscope probe across the output capacitor (COUT1) with the probe ground lead at the negative (-) capacitor terminal and the probe tip at the positive (+) capacitor terminal.

Set the oscilloscope to ac, 10 mV/division, and 2 µs/division time base, with the bandwidth set to 20 MHz to prevent noise from interfering with the measurements. It is also recommended to shorten the ground loop of the oscilloscope probe to minimize coupling. One way of measuring the output voltage ripple is to solder a wire to the negative (-) capacitor terminal and wrap it around the barrel of the probe, while the tip directly connects to the positive (+) capacitor terminal, as shown on Figure 4.

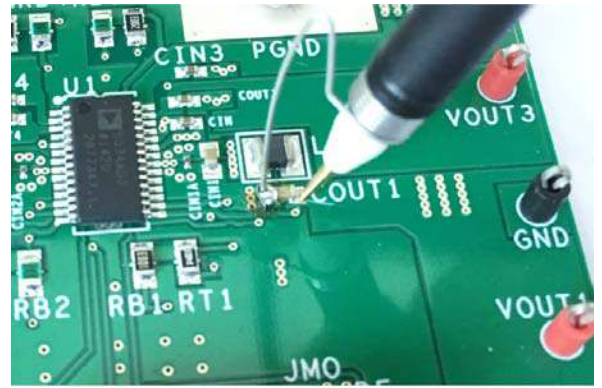


Figure 4. Measuring Output Voltage Ripple

**Measuring the Switching Waveform of Buck Regulators**

To observe the switching waveform with an oscilloscope, place the oscilloscope probe tip at the end of the inductor with the probe ground at GND. Set the oscilloscope to dc, 2 V/division, and 200 ns/division time base. When the MODE pin is set to high, the buck regulators operate in forced PWM mode. When the MODE pin is set to low and the load is above a predefined threshold, the buck regulators operate in PWM mode. When the load current falls below a predefined threshold, the regulator operates in PSM, improving the light load efficiency. Typical PWM and PSM switching waveforms are shown in Figure 5 and Figure 6.

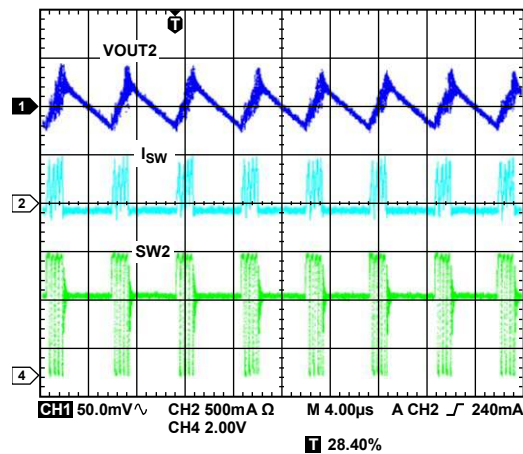


Figure 5. Typical Waveforms, V<sub>OUT2</sub> = 3.3 V, I<sub>OUT2</sub> = 30 mA, PSM Mode

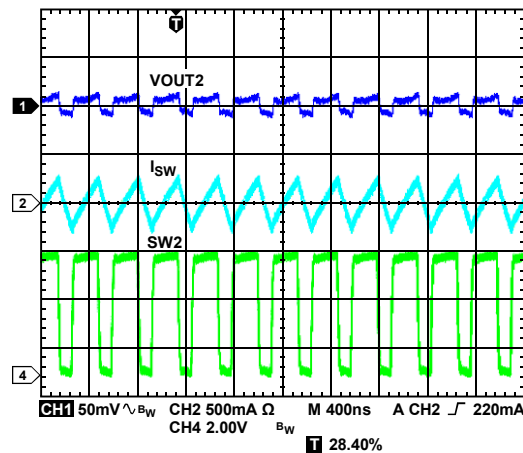


Figure 6. Typical Waveforms, V<sub>OUT2</sub> = 3.3 V, I<sub>OUT2</sub> = 30 mA, PWM Mode

**Measuring Load Regulation of the Buck Regulator**

Test the load regulation by increasing the load at the output and examining the change in output voltage. The input voltage must be held constant during this measurement. To minimize voltage drop, use short low resistance wires, especially for loads approaching maximum current. The buck regulator load regulation plots for  $V_{OUT2} = 3.3\text{ V}$  and  $V_{OUT2} = 1.8\text{ V}$  are shown in Figure 7 and Figure 8, respectively.

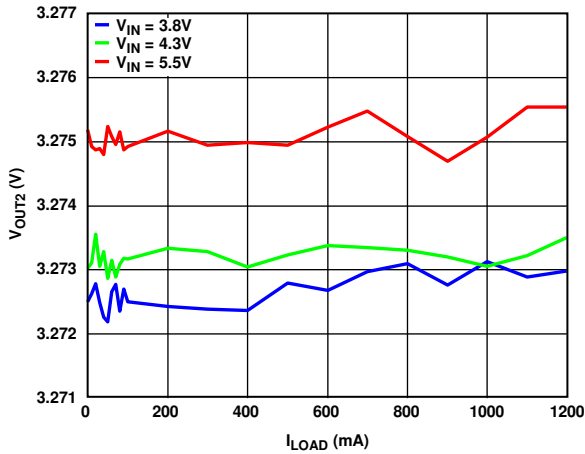


Figure 7. Buck Load Regulation,  $V_{OUT2} = 3.3\text{ V}$

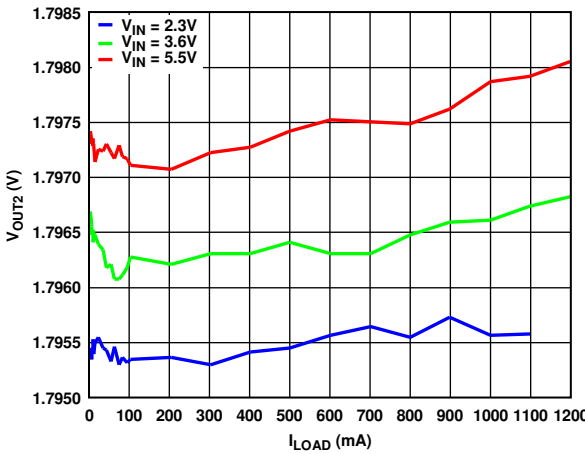


Figure 8. Buck Load Regulation,  $V_{OUT2} = 1.8\text{ V}$

**Measuring Line Regulation of the Buck Regulator**

Test the line regulation by increasing the input voltage and examining the change in the output voltage. The buck regulator line regulation plots for  $V_{OUT2} = 3.3\text{ V}$  and  $V_{OUT2} = 1.8\text{ V}$  are shown in Figure 9 and Figure 10, respectively.

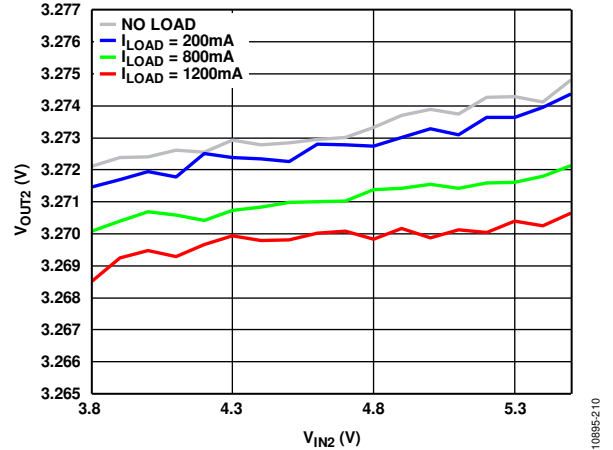


Figure 9. Buck Regulator Line Regulation,  $V_{OUT2} = 3.3\text{ V}$

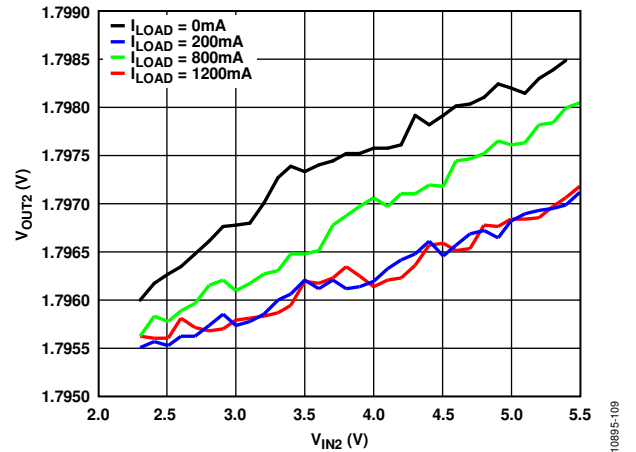


Figure 10. Buck Regulator Line Regulation,  $V_{OUT2} = 1.8\text{ V}$

**Measuring Efficiency of the Buck Regulator**

Measure the efficiency,  $\eta$ , by comparing the input power with the output power.

$$\eta = \frac{V_{OUT} \times I_{OUT}}{V_{IN} \times I_{IN}}$$

Measure the input and output voltages as close as possible to the input and output capacitors to reduce the effect of IR drops.

The buck regulator efficiency plots for  $V_{OUT2} = 3.3\text{ V}$  and  $V_{OUT2} = 1.8\text{ V}$  are shown in Figure 11 and Figure 12, respectively.

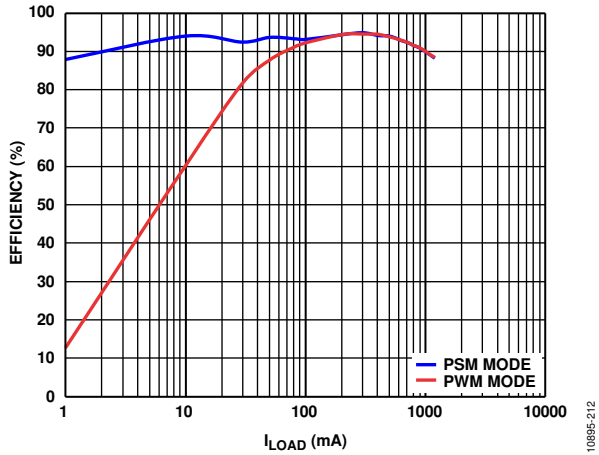


Figure 11. Buck Regulator Efficiency,  $V_{IN2} = 4.2\text{ V}$ ,  $V_{OUT2} = 3.3\text{ V}$

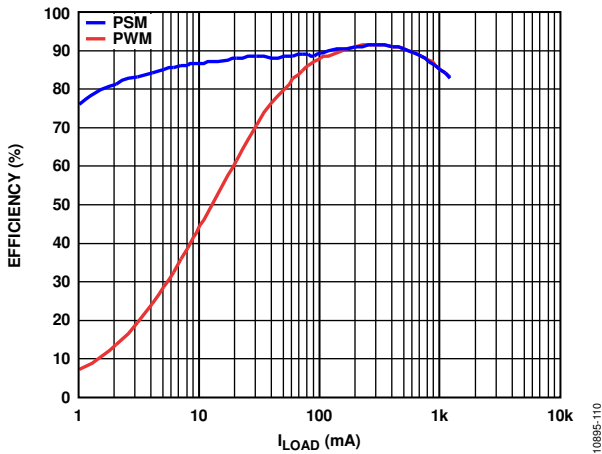


Figure 12. Buck Regulator Efficiency,  $V_{IN2} = 3.6\text{ V}$ ,  $V_{OUT2} = 1.8\text{ V}$

**Measuring Inductor Current**

Measure the inductor current by removing one end of the inductor from its pad and connecting a current loop in series. Connect a current probe to this wire.

**Measuring Line Regulation of LDO Regulators**

For line regulation measurements, the output of the regulator is monitored while its input is varied. For optimal line regulation, the output must change as little as possible with varying input levels.

To ensure that the device is not in dropout mode during this measurement,  $V_{IN}$  must be varied between  $V_{OUT}$  nominal + 0.5 V (or 2.3 V, whichever is greater) and  $V_{IN}$  maximum. For example, a fixed 3.3 V output needs  $V_{IN}$  to be varied between 3.8 V and 5.5 V. This measurement can be repeated under different load conditions. Figure 13 shows the typical line regulation performance of the LDO regulator with a fixed 3.3 V output.

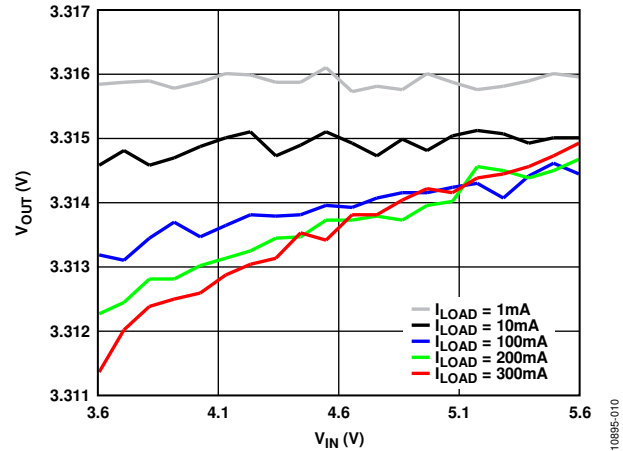


Figure 13.  $V_{OUT}$  vs.  $V_{IN}$  LDO Line Regulation for an Output of 3.3 V

**Measuring Load Regulation of LDO Regulators**

For load regulation measurements, the regulator output is monitored while the load is varied. For optimal load regulation, the output must change as little as possible with varying loads. The input voltage must be held constant during this measurement. The load current can be varied from 0 mA to 300 mA. Figure 14 shows the typical load regulation performance of the LDO regulator with a 3.3 V output for different input voltages.

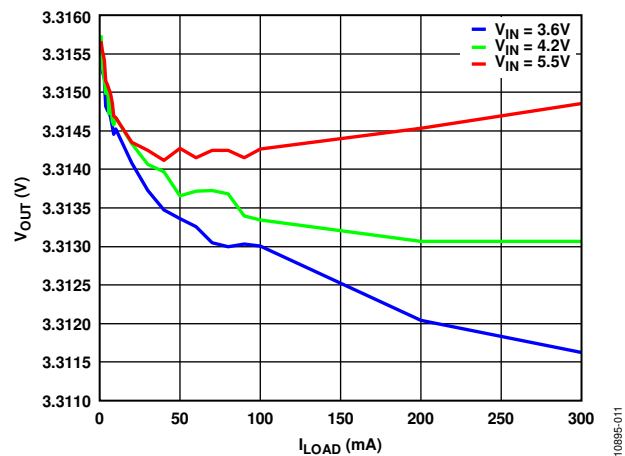


Figure 14.  $V_{OUT}$  vs.  $I_{LOAD}$  LDO Load Regulation



**Measuring Dropout Voltage of LDO Regulators**

Dropout voltage is defined as the input-to-output voltage differential when the input voltage is set to the nominal output voltage. One way to measure dropout voltage is to obtain the output voltage ( $V_{OUT}$  nominal) with  $V_{IN}$  initially set to  $V_{OUT}$  nominal + 0.5 V; set the output load to 100  $\mu$ A. Then, force the input voltage equal to  $V_{OUT}$  nominal, and measure the output voltage accordingly ( $V_{OUT}$  dropout). Dropout voltage is then calculated as  $V_{OUT}$  nominal -  $V_{OUT}$  dropout. This calculation applies only for output voltages greater than 1.7 V.

Dropout voltage increases with larger loads. For more accurate measurements, use a second voltmeter to monitor the input voltage across the input capacitor. The input supply voltage may need to be adjusted to account for IR drops, especially if large load currents are used.

**Cascading an LDO Regulator from the Buck Regulator**

For certain applications such as analog circuit supplies, the LDO regulators are preferred over the buck regulators because of improved noise performance. When none of the buck regulator outputs are being used, the input supply of the LDO regulators can be taken from these outputs. An example evaluation board connection is shown in Figure 15, wherein VOUT1 is tied to VIN3, which is the supply of LDO1, by shunting Jumper JV3V1. Subsequently, VIN4, which is the supply of LDO2 can also be connected to VOUT2 through Jumper JV4V2. In this configuration, the output voltage of the buck regulator has enough headroom with the desired output voltage of the LDO regulator to guarantee that the LDO regulator operates within specifications.

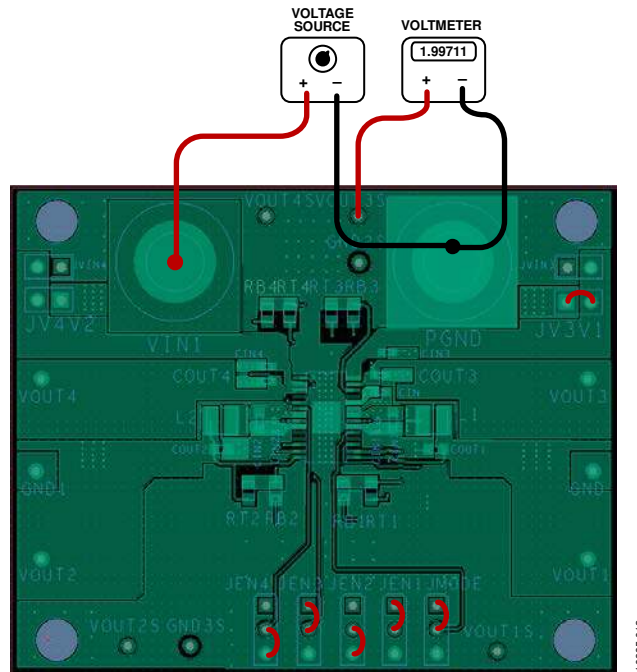


Figure 15. Cascading an LDO Regulator from the Buck Regulator

## MEASURING OUTPUT VOLTAGE

Figure 16 shows how the evaluation board can be connected to a voltage source and a voltmeter for basic output voltage accuracy measurements. It shows a voltage source connected to VIN1 and a voltmeter connected to VOUT1S, which is the output voltage sense terminal of Buck 1. JEN1 is connected to VIN1 via a shunt that enables Buck 1; JEN2, JEN3, and JEN4 are connected to ground, disabling the other channels.

When measuring the voltages on VOUT2, VOUT3, and VOUT4, ensure that the respective channels are enabled, and the volt meters are connected to the respective outputs. A resistor can be used as the load for the regulator. Ensure that the resistor has a power rating adequate to handle the power expected to be dissipated across it. An electronic load can also be used as an alternative. Ensure that the voltage source supplies enough current for the expected load levels.

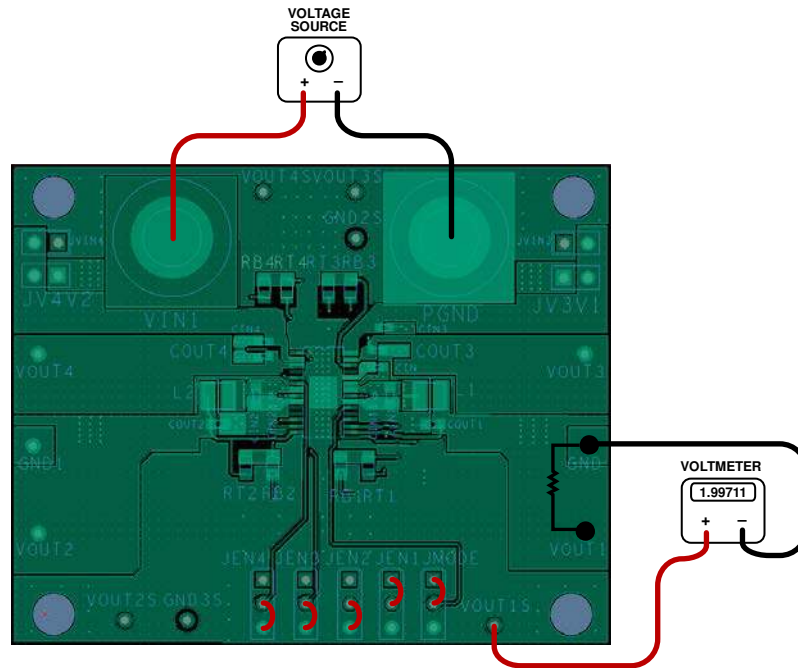


Figure 16. Output Voltage Measurement

10895-013



## MEASURING GROUND CURRENT

### MEASURING GROUND CURRENT CONSUMPTION OF LDO REGULATORS

Ground current measurements can determine how much current the internal circuits of the regulator consume while the circuits perform the regulation function. To be efficient, the regulator needs to consume as little current as possible. Typically, the regulator uses the maximum current when supplying its largest load level (300 mA). When the device is disabled, the ground current drops to less than 1  $\mu$ A.

Figure 17 shows the evaluation board connected to a voltage source and an ammeter for ground current measurements. A resistor can be used as the load for the regulator.

Ensure that the resistor has a power rating that is adequate to handle the power expected to be dissipated across it. An electronic load can be used as an alternative. Ensure that the voltage source can supply enough current for the expected load levels.

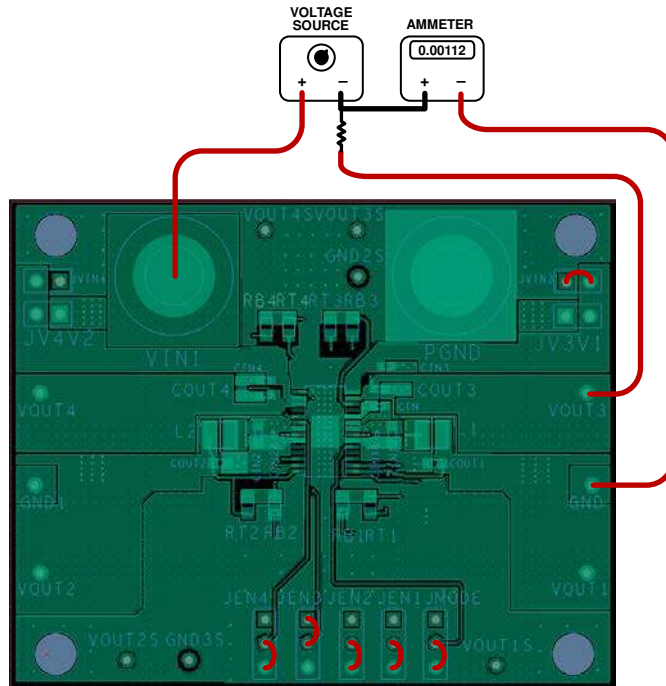


Figure 17. Ground Current Measurement

10895-014

EVALUATION BOARD SCHEMATIC AND ARTWORK

510-56801

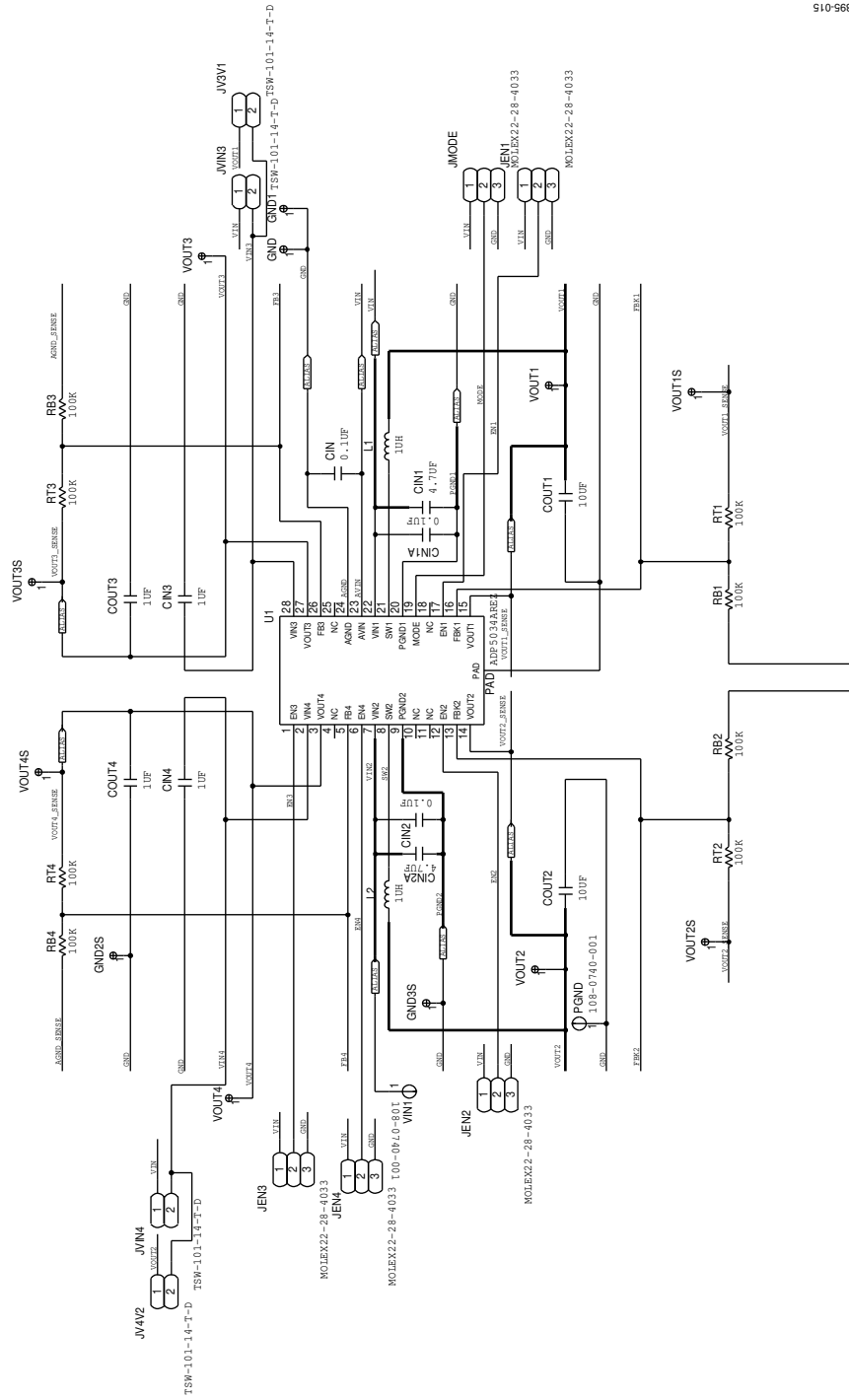
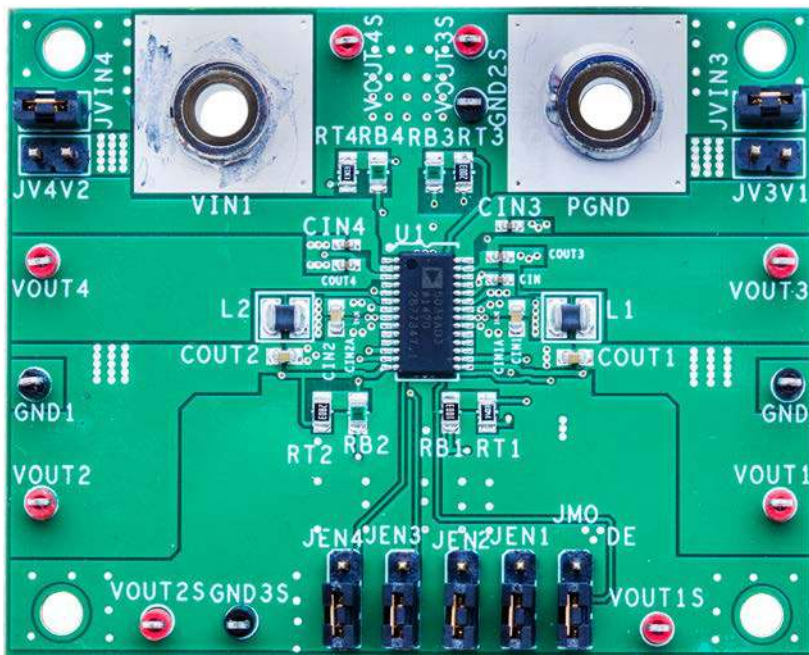
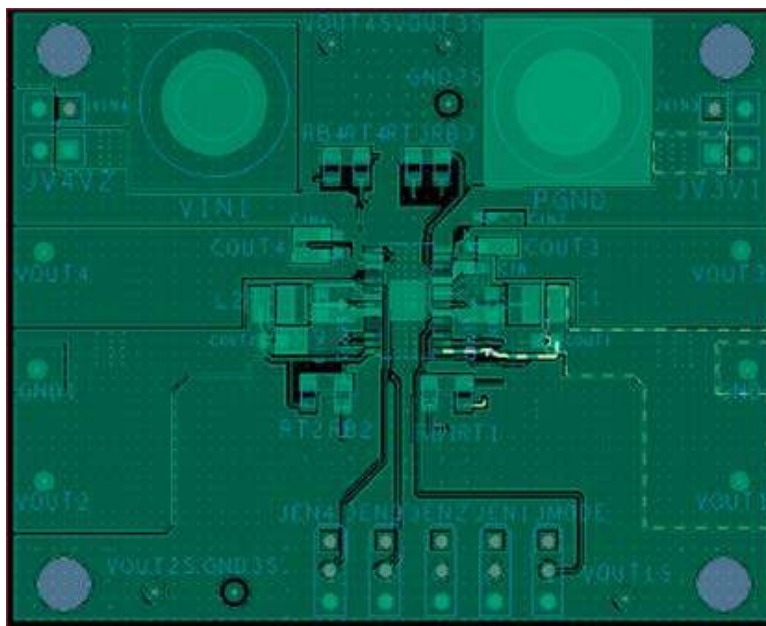


Figure 18. Evaluation Board Schematic of the ADP5034 TSSOP



10895-016

Figure 19. Evaluation Board of the ADP5034 TSSOP



10895-017

Figure 20. Top Layer, Recommended Layout for ADP5034 TSSOP

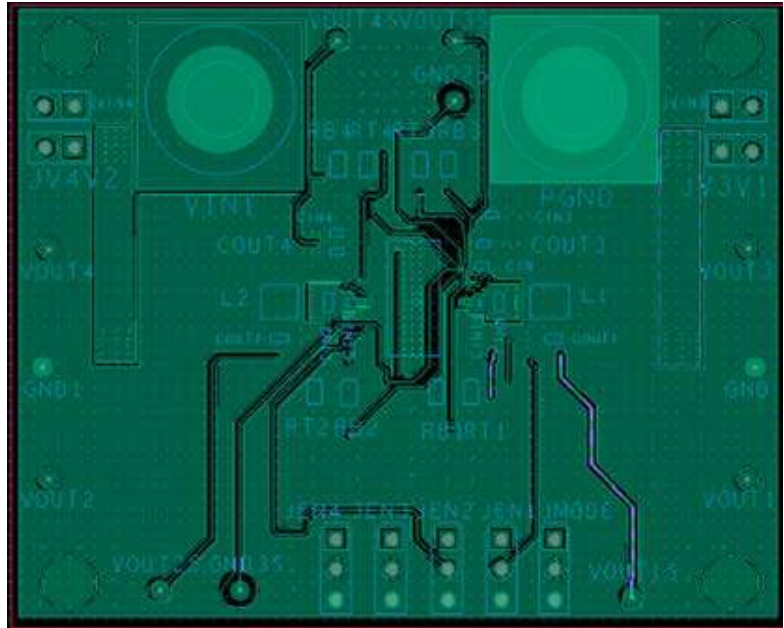


Figure 21. Bottom Layer, Recommended Layout for ADP5034 TSSOP

10895-01B

# ORDERING INFORMATION

## BILL OF MATERIALS

Table 3.

Qty.	Reference Designator	Description	Manufacturer	Part Number
1	U1	Micro PMU	Analog Devices	<a href="#">ADP5034</a>
2	CIN1, CIN2	Capacitor, MLCC, 4.7 µF	Murata	GRM188R60J475ME19D
4	CIN3, CIN4, COUT3, COUT4	Capacitor, MLCC, 1.0 µF	Murata	GRM155R61A105KE15D
2	COUT_2, COUT_1	Capacitor, MLCC, 10.0 µF	Murata	GRM188R60J106ME47D
1	CIN	Capacitor, MLCC, 0.1 µF	Taiyo Yuden	GMK105BJ104MV-F
2	CIN1A, CIN2A	Capacitor, MLCC, 0.1 µF	Taiyo Yuden	LMK063BJ10KPF
2	L1, L2	Inductor, 1.0 µH	Murata	LQM2HPN1R0MJ0L
1	RT1	Resistor, 0805, 140 kΩ	Vishay	TNPW0805140KBEEA
1	RT2	Resistor, 0805, 280 kΩ	Vishay	TNPW0805280KBEEA
1	RT3	Resistor, 0805, 200 kΩ	Vishay	TNPW0805200KBEEA
1	RT4	Resistor, 0805, 130 kΩ	Vishay	TNPW0805130KBEEA
1	RB1	Resistor, 0805, 100 kΩ	Vishay	TNPW0805100KBEEA
3	RB2, RB3, RB4	Resistor, 0805, 50 kΩ	Vishay	PNM0805E5002BST5

## RELATED LINKS

Resource	Description
<a href="#">ADP5023</a>	Dual 3 MHz, 800 mA Buck Regulator with One 300 mA LDO
<a href="#">ADP5024</a>	Dual 3 MHz, 1200 mA Buck Regulators with One 300 mA LDO
<a href="#">ADP5034</a>	Dual 3 MHz, 1200 mA Buck Regulator with Two 300 mA LDOs
<a href="#">ADP5037</a>	Dual 3 MHz, 800 mA Buck Regulators with Two 300 mA LDOs
<a href="#">UG-271</a>	Evaluation Board User Guide for <a href="#">ADP5034</a> LFCSP



**ESD Caution**

**ESD (electrostatic discharge) sensitive device.** Charged devices and circuit boards can discharge without detection. Although this product features patented or proprietary protection circuitry, damage may occur on devices subjected to high energy ESD. Therefore, proper ESD precautions should be taken to avoid performance degradation or loss of functionality.

**Legal Terms and Conditions**

By using the evaluation board discussed herein (together with any tools, components documentation or support materials, the "Evaluation Board"), you are agreeing to be bound by the terms and conditions set forth below ("Agreement") unless you have purchased the Evaluation Board, in which case the Analog Devices Standard Terms and Conditions of Sale shall govern. Do not use the Evaluation Board until you have read and agreed to the Agreement. Your use of the Evaluation Board shall signify your acceptance of the Agreement. This Agreement is made by and between you ("Customer") and Analog Devices, Inc. ("ADI"), with its principal place of business at One Technology Way, Norwood, MA 02062, USA. Subject to the terms and conditions of the Agreement, ADI hereby grants to Customer a free, limited, personal, temporary, non-exclusive, non-sublicensable, non-transferable license to use the Evaluation Board FOR EVALUATION PURPOSES ONLY. Customer understands and agrees that the Evaluation Board is provided for the sole and exclusive purpose referenced above, and agrees not to use the Evaluation Board for any other purpose. Furthermore, the license granted is expressly made subject to the following additional limitations: Customer shall not (i) rent, lease, display, sell, transfer, assign, sublicense, or distribute the Evaluation Board; and (ii) permit any Third Party to access the Evaluation Board. As used herein, the term "Third Party" includes any entity other than ADI, Customer, their employees, affiliates and in-house consultants. The Evaluation Board is NOT sold to Customer; all rights not expressly granted herein, including ownership of the Evaluation Board, are reserved by ADI. CONFIDENTIALITY. This Agreement and the Evaluation Board shall all be considered the confidential and proprietary information of ADI. Customer may not disclose or transfer any portion of the Evaluation Board to any other party for any reason. Upon discontinuation of use of the Evaluation Board or termination of this Agreement, Customer agrees to promptly return the Evaluation Board to ADI. ADDITIONAL RESTRICTIONS. Customer may not disassemble, decompile or reverse engineer chips on the Evaluation Board. Customer shall inform ADI of any occurred damages or any modifications or alterations it makes to the Evaluation Board, including but not limited to soldering or any other activity that affects the material content of the Evaluation Board. Modifications to the Evaluation Board must comply with applicable law, including but not limited to the RoHS Directive. TERMINATION. ADI may terminate this Agreement at any time upon giving written notice to Customer. Customer agrees to return to ADI the Evaluation Board at that time. LIMITATION OF LIABILITY. THE EVALUATION BOARD PROVIDED HEREUNDER IS PROVIDED "AS IS" AND ADI MAKES NO WARRANTIES OR REPRESENTATIONS OF ANY KIND WITH RESPECT TO IT. ADI SPECIFICALLY DISCLAIMS ANY REPRESENTATIONS, ENDORSEMENTS, GUARANTEES, OR WARRANTIES, EXPRESS OR IMPLIED, RELATED TO THE EVALUATION BOARD INCLUDING, BUT NOT LIMITED TO, THE IMPLIED WARRANTY OF MERCHANTABILITY, TITLE, FITNESS FOR A PARTICULAR PURPOSE OR NON-INFRINGEMENT OF INTELLECTUAL PROPERTY RIGHTS. IN NO EVENT WILL ADI AND ITS LICENSORS BE LIABLE FOR ANY INCIDENTAL, SPECIAL, INDIRECT, OR CONSEQUENTIAL DAMAGES RESULTING FROM CUSTOMER'S POSSESSION OR USE OF THE EVALUATION BOARD, INCLUDING BUT NOT LIMITED TO LOST PROFITS, DELAY COSTS, LABOR COSTS OR LOSS OF GOODWILL. ADI'S TOTAL LIABILITY FROM ANY AND ALL CAUSES SHALL BE LIMITED TO THE AMOUNT OF ONE HUNDRED US DOLLARS (\$100.00). EXPORT. Customer agrees that it will not directly or indirectly export the Evaluation Board to another country, and that it will comply with all applicable United States federal laws and regulations relating to exports. GOVERNING LAW. This Agreement shall be governed by and construed in accordance with the substantive laws of the Commonwealth of Massachusetts (excluding conflict of law rules). Any legal action regarding this Agreement will be heard in the state or federal courts having jurisdiction in Suffolk County, Massachusetts, and Customer hereby submits to the personal jurisdiction and venue of such courts. The United Nations Convention on Contracts for the International Sale of Goods shall not apply to this Agreement and is expressly disclaimed.

