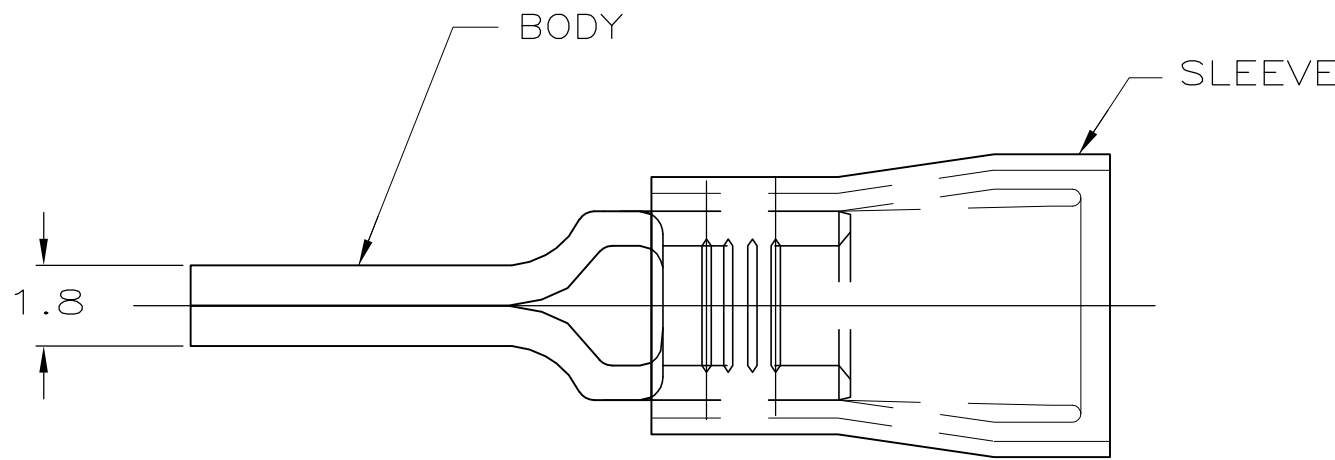


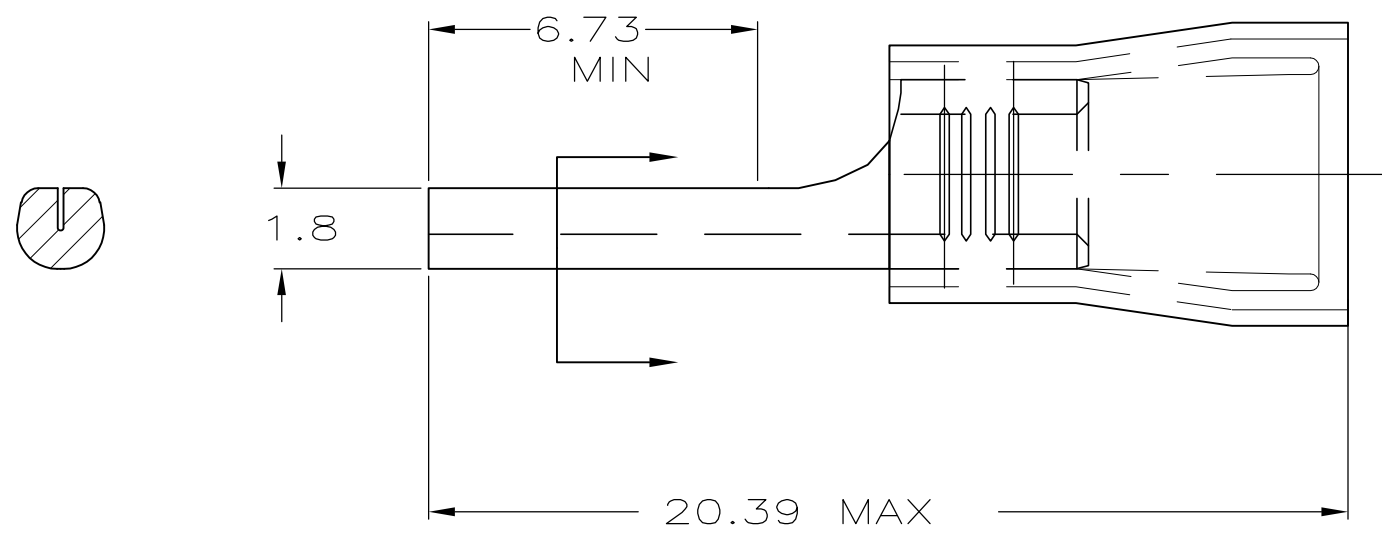
THIS DRAWING IS UNPUBLISHED. RELEASED FOR PUBLICATION  
 © COPYRIGHT BY TYCO ELECTRONICS CORPORATION. ALL RIGHTS RESERVED.

LOC	DIST	REVISIONS					
G	14	P	LTR	DESCRIPTION	DATE	DWN	APVD
		D		REV PER ECR 07-023647	12OCT07	JR	TM



<b>AMP</b> WIRE RANGE	<b>RU</b> FILE E13288
16-14 AWG STRANDED	16-14 AWG STRANDED

- 1 WIRE INSULATION DIA.  
2.92-4.32 DIA.
- 2 LOOSE PIECE P/N 165046
- 3 BODY : TIN PLATE PER ASTM B545  
SLEEVE: COLOR - BLUE,
- 4 BODY: COPPER PER ASTM B152  
SLEEVE: PVC



4000	ON TAPE	696394-2
QTY	PACKAGE TYPE	PART NO

<b>AMP INCORPORATED CUSTOMER SERVICE SYSTEMS</b>		MAX RECOMMENDED OPERATING TEMPERATURE: 105°C [221° F]	THIS DRAWING IS A CONTROLLED DOCUMENT.		DWN JR RUTH 02JAN02	Tyco Electronics Corporation Harrisburg, PA 17105-3608				
FOR ADDITIONAL PRODUCT INFORMATION OR COPIES OF DRAWINGS AND TECHNICAL DOCUMENTS	PRODUCT INFORMATION CENTER 1-800-522-6752	VOLTAGE RATING: 300V MAX	DIMENSIONS: mm	TOLERANCES UNLESS OTHERWISE SPECIFIED:	CHK T MICHIELUTTI 02JAN02	NAME TERMINAL, WIRE PIN, PIDG WIRE SIZE, 16-14 AWG				
FOR APPLICATION TOOLING INFORMATION	TOOLING ASSISTANCE CENTER 1-800-722-1111	CIRCULAR MIL AREA: 1.0-2.6mm <sup>2</sup> [1974-5131] STRANDED		0 PLC ± - 1 PLC ± - 2 PLC ± 0.20 3 PLC ± - 4 PLC ± - ANGLES ± -	APVD T MICHIELUTTI 02JAN02	APPLICATION SPEC				
FOR ORDER ENTRY	1-800-526-5142	THIS DRAWING IS A CONTROLLED DOCUMENT FOR AMP INCORPORATED. IT IS SUBJECT TO CHANGE AND THE CONTROLLING ENGINEERING ORGANIZATION SHOULD BE CONTACTED FOR THE LATEST REVISION.	MATERIAL - 4	FINISH - 3	PRODUCT SPEC	SIZE A3	CAGE CODE 00779	DRAWING NO G-696394	RESTRICTED TO	
					WEIGHT -	CUSTOMER DRAWING		SCALE 6:1	SHEET 1 OF 1	REV D