

NOTES:

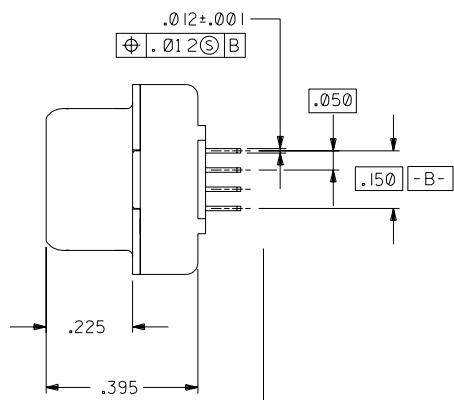
1) MATERIALS:
 HOUSING: GLASS FILLED LCP (LIQUID CRYSTAL POLYMER), UL 94V-0, COLOR: BLACK.
 MOLDED STICK: GLASS FILLED LCP (LIQUID CRYSTAL POLYMER), UL 94V-0, COLOR: BLACK.
 MALE TERMINAL: PHOSPHOR BRONZE
 OUTER SHELL: DEEP DRAWN STEEL.

2) PLATING :
 TERMINAL: .000030/(0.000762) MINIMUM GOLD IN SELECTIVE AREA;
 .000100/(0.00254) MINIMUM TIN IN SELECTIVE AREA;
 OVER NICKEL UNDERPLATE OVERALL.

OUTER SHELL: .000100/(0.00254) MINIMUM BRIGHT NICKEL OVER COPPER FLASH (OPTIONAL).

3) CONFORMS TO PRODUCT SPECIFICATION PS-70928.

4) PARTS TO BE PACKAGED PER PK-70873-0604.



M3 THREADED INSERT
 RETAINED IN PLASTIC.
 MAXIMUM APPLICATION
 TORQUE: 5 in-lbs

ITEM NUMBER	DIM "A" (TAIL LENGTH)
71475-1000	.092±.007
71475-1001	.062±.007

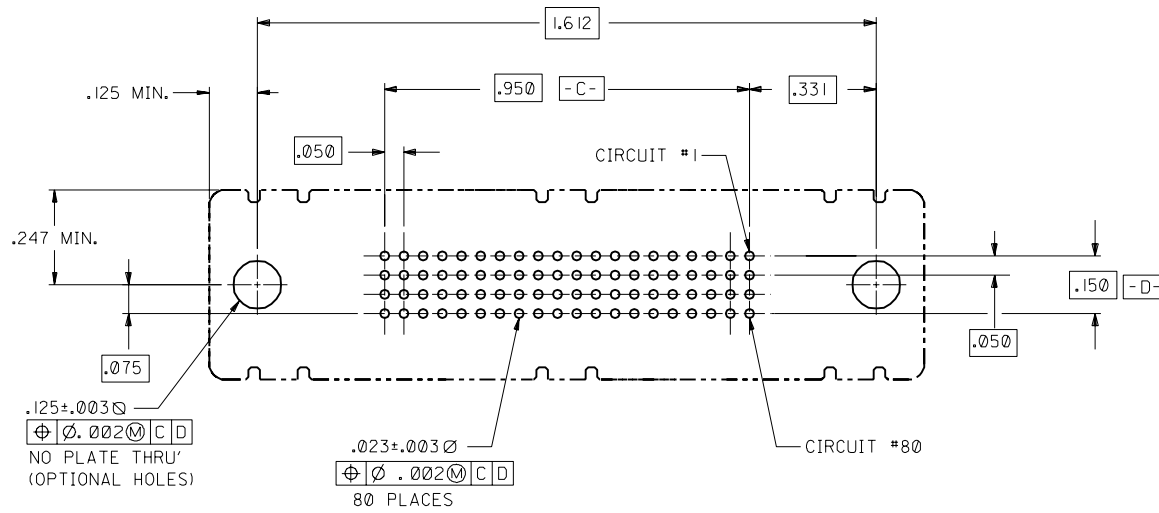
NOTE FOR LEAD FREE CONVERSION:
 THE PRIMARY SHIPPING CARTON WILL BE LABELED "COMPLIANT TO ROHS DIRECTIVE 2002/95/EC AND ELV ANNEX II OF DIRECTIVE 2000/53/EC". CARTONS WITHOUT THIS LABEL MAY CONTAIN PRODUCT WITH LEAD.

E	LEADFREE	ECN# UCF2004-1998
D	MODIFIED	PER ECN U6-1399
C	ADDED -1001	PER ECN U6-0957
B	REVISED	PER ECN U6-0641
A	FIRST RELEASE	PER ECN U5-1116

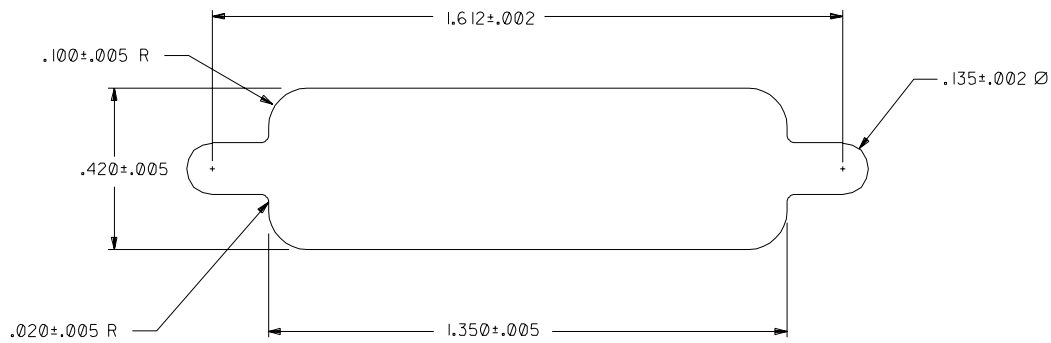
2	B	REVISIONS
1	E	REVISIONS

DIMENSIONS SHOWN (METRIC) INCH	
UNLESS OTHERWISE SPECIFIED	
TOLERANCES: ANGULAR ± 1/2°	
3 PLACE	± .010
2 PLACE	±
1 PLACE	---
DRAFT WHERE APPLICABLE MUST	
REMAIN WITHIN DIMENSIONS	
DRWG. BY	MOSE
CHK'D. BY	GW
APP'D. BY	GW
SCALE	4: 1

▽ = 0	▽ = 0	REVISIONS
TITLE		
.050"x.050" 80ckt LFH		
Vertical Plug I/O		
FOR .062" THK. PCB		
MOLEX	MOLEX INCORPORATED	SHEET NO. DATE
LITLLE, ILL.	60532	1 OF 2 03/23/95
PART NO.	DRWG. NO.	
SEE CHART	SDA-71475-100*	
FILE NAME	571475X1	SIZE
MOX INC AND SHOULD NOT BE USED WITHOUT WRITTEN PERMISSION	CD	C



RECOMMENDED P.C.B. LAYOUT
COMPONENT SIDE



RECOMMENDED PANEL CUT-OUT

NOTE: MAX. PANEL THICKNESS: .040"

B	SEE SHEET I
A	SEE SHEET I

DIMENSIONS SHOWN (METRIC) INCH		▽ = 0		◻ = 0		REVISE ONLY ON CAD SYSTEM	
UNLESS OTHERWISE SPECIFIED TOLERANCES ANGULAR ± 1/2°							
INCH		METRIC		TITLE			
3 PLACE ±	.010	---		.050"x.050" @ 80ckt LFH			
2 PLACE ±	±	±		Vertical Plug I/O			
1 PLACE ---	±	±		FOR .062" THK PCB			
DRAFT WHERE APPLICABLE MUST REMAIN WITHIN DIMENSIONS				MOLEX INCORPORATED		SHEET NO. DATE	
				L15LEJLL 60532		2 03/23/95	
PART NO.				DRWG. NO.			
SEE SHEET I				SDA-71475-100*			
DRAWN BY: MOS		CHK'D BY: GWF		FILE NAME: S71475X2		DIV. SIZE	
APP'D BY: GWF		SCALE: 4: 1		THIS DRAWING CONTAINS INFORMATION THAT IS PROPRIETARY TO MOLEX INC. AND SHOULD NOT BE USED WITHOUT WRITTEN PERMISSION		CD C	

71475