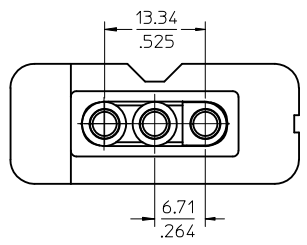
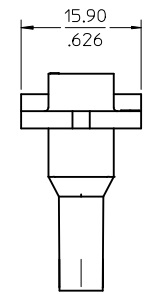
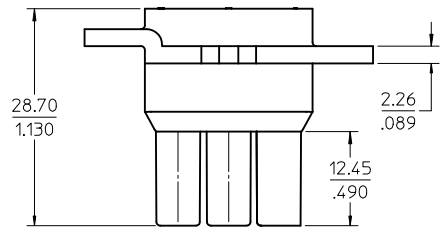
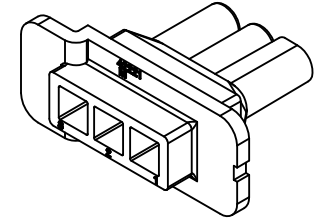
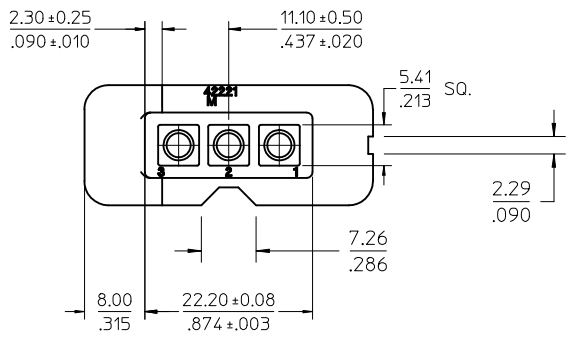


- NOTES:
1. MATERIAL: NYLON, TYPE 6/6, UL94V-2, COLOR: NATURAL
 2. FINISH: NONE
 3. PRODUCT SPECIFICATION: N/A
 4. PACKAGING INFORMATION: BULK

PLUG

REDRAW FROM MODEL EC NO: UCP2011-1528 DRWNC: STEWART 2010/11/30 CHKD: APPR: FSMITH 2010/12/06 REV:	QUALITY SYMBOLS	GENERAL TOLERANCES (UNLESS SPECIFIED)	DIMENSION STYLE	SCALE	DESIGN UNITS	THIRD ANGLE PROJECTION
	▽=0 ▽=0	mm INCH 4 PLACES ± --- ± --- 3 PLACES ± --- ± .010 2 PLACES ± .25 ± .015 1 PLACE ± .38 ± --- ANGULAR ± 1/2°	MM/IN	2:1	INCH	DRAWN BY: RWK DATE: 1988/03/04 CHECKED BY: RHR DATE: 1988/03/04 APPROVED BY: FSMITH DATE: 2010/12/06
		DRAFT WHERE APPLICABLE MUST REMAIN WITHIN DIMENSIONS	MATERIAL NO.	TITLE		
			19-09-2035	.093/(2.36) HOUSING PLUG AND RECEPTACLE, 3 CIRCUIT .264/(6.70) CENTERS		
			MOLEX MOLEX INCORPORATED			
			DOCUMENT NO.		SHEET NO.	
			SD-42221-3*		1 OF 2	
			THIS DRAWING CONTAINS INFORMATION THAT IS PROPRIETARY TO MOLEX INCORPORATED AND SHOULD NOT BE USED WITHOUT WRITTEN PERMISSION			



- NOTES:
1. MATERIAL: NYLON, TYPE 6/6
UL94V-2, COLOR: NATURAL
 2. FINISH: NONE
 - PRODUCT SPECIFICATION: N/A
 4. PACKAGING INFORMATION: BULK

RECEPTACLE

REDRAW FROM MODEL EC NO: UCP2011-1528 DRWNC: STEWART 2010/11/30 CHKD: APPR: FSMITH 2010/12/06 REV:	QUALITY SYMBOLS	GENERAL TOLERANCES (UNLESS SPECIFIED)	DIMENSION STYLE	SCALE	DESIGN UNITS	THIRD ANGLE PROJECTION																							
	$\nabla=0$ $\nabla=0$	<table border="1"> <thead> <tr> <th></th> <th>mm</th> <th>INCH</th> </tr> </thead> <tbody> <tr> <td>4 PLACES</td> <td>± .---</td> <td>± .---</td> </tr> <tr> <td>3 PLACES</td> <td>± .---</td> <td>± .010</td> </tr> <tr> <td>2 PLACES</td> <td>± .25</td> <td>± .015</td> </tr> <tr> <td>1 PLACE</td> <td>± .38</td> <td>± .---</td> </tr> </tbody> </table>		mm	INCH	4 PLACES	± .---	± .---	3 PLACES	± .---	± .010	2 PLACES	± .25	± .015	1 PLACE	± .38	± .---	<table border="1"> <thead> <tr> <th>MM/IN</th> <th>DATE</th> </tr> </thead> <tbody> <tr> <td>DRAWN BY</td> <td>RWK 1988/03/04</td> </tr> <tr> <td>CHECKED BY</td> <td>RHR 1988/03/04</td> </tr> <tr> <td>APPROVED BY</td> <td>FSMITH 2010/12/06</td> </tr> </tbody> </table>	MM/IN	DATE	DRAWN BY	RWK 1988/03/04	CHECKED BY	RHR 1988/03/04	APPROVED BY	FSMITH 2010/12/06	2:1	INCH	
		mm	INCH																										
	4 PLACES	± .---	± .---																										
3 PLACES	± .---	± .010																											
2 PLACES	± .25	± .015																											
1 PLACE	± .38	± .---																											
MM/IN	DATE																												
DRAWN BY	RWK 1988/03/04																												
CHECKED BY	RHR 1988/03/04																												
APPROVED BY	FSMITH 2010/12/06																												
DRAFT WHERE APPLICABLE MUST REMAIN WITHIN DIMENSIONS	MATERIAL NO. 19-09-1035	TITLE .093/(2.36) HOUSING PLUG AND RECEPTACLE, 3 CIRCUIT .264/(6.70) CENTERS	MOLEX INCORPORATED	SHEET NO. 2 OF 2																									