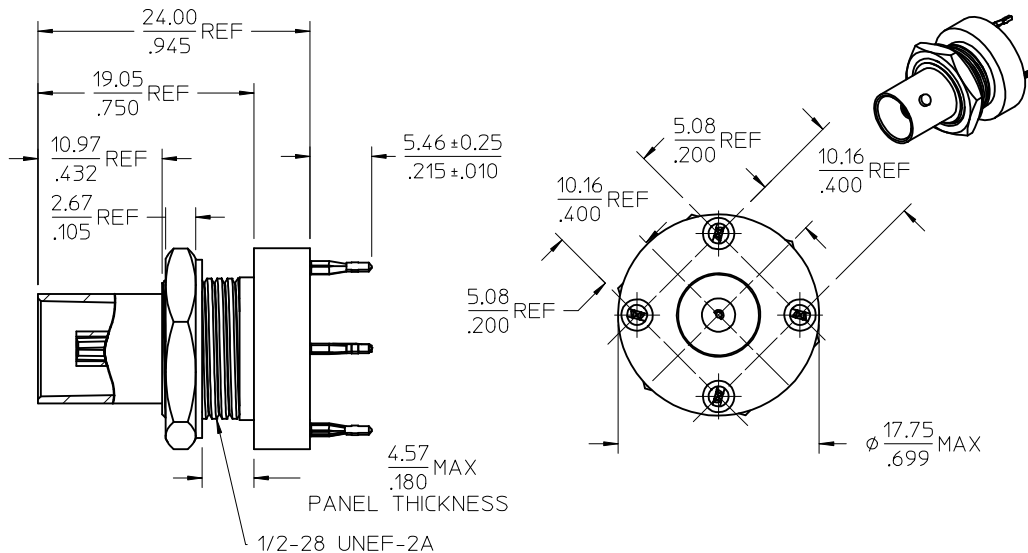
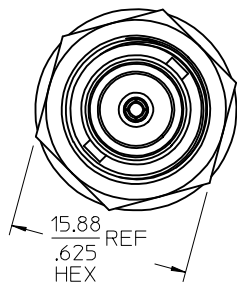
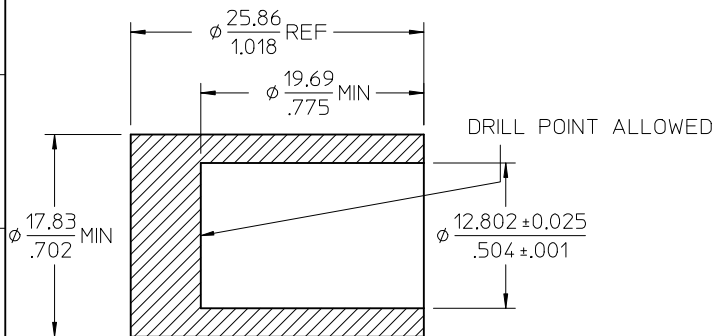


MATERIALS AND FINISHES:

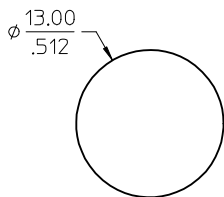
- BODY: ZINC
PLATED NICKEL
- CENTER CONTACT: BERYLLIUM COPPER
PLATED GOLD
- COMPLIANT GROUND PIN: PHOSPHOR BRONZE
PLATED TIN
- INSULATOR TEFLON
- LOCKWASHER: PHOSPHOR BRONZE
PLATED NICKEL
- JAM NUT: BRASS
PLATED NICKEL



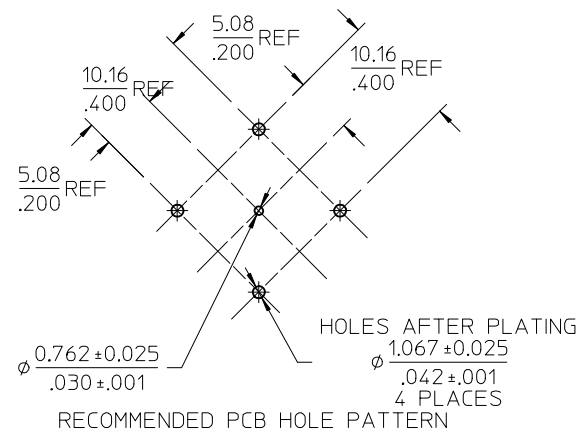
OBSOLETE AFTER 9/01/2017. LAST BUY DATE 6/1/2017



SUGGESTED TOOL TO PRESS
CONNECTORS ONTO PCB
TOOL NOT INCLUDED WITH CONNECTOR



RECOMMENDED MOUNTING HOLE



RECOMMENDED PCB HOLE PATTERN

PART # 73171-0950

CHG: ADD NOTE EC NO: URF-2017-0287 DRWN: YCHENG 2017/01/25 CHKD: APPR: AROBERTSON 2017/01/27	QUALITY SYMBOLS ▽=0 ▽=0	GENERAL TOLERANCES (UNLESS SPECIFIED)		DIMENSION STYLE MM/IN		SCALE METRIC	DESIGN UNITS METRIC	THIRD ANGLE PROJECTION		
		4 PLACES ± --- ± ---	3 PLACES ± --- ± ---	2 PLACES ± --- ± ---	1 PLACE ± --- ± ---	DRAWN BY GMH	DATE 1999/09/27	TITLE BNC JACK, W/CONFORMABLE PINS, PCB, 75 OHMS BNC-J/PCB		
		ANGULAR ± 2 °				CHECKED BY GMH	DATE 1999/09/27	APPROVED BY GMH		
		DRAFT WHERE APPLICABLE MUST REMAIN WITHIN DIMENSIONS				MATERIAL NO. 731710950	DATE 1999/09/27	MOLEX INCORPORATED		SHEET NO. 1 OF 1

THIS DRAWING CONTAINS INFORMATION THAT IS PROPRIETARY TO MOLEX INCORPORATED AND SHOULD NOT BE USED WITHOUT WRITTEN PERMISSION