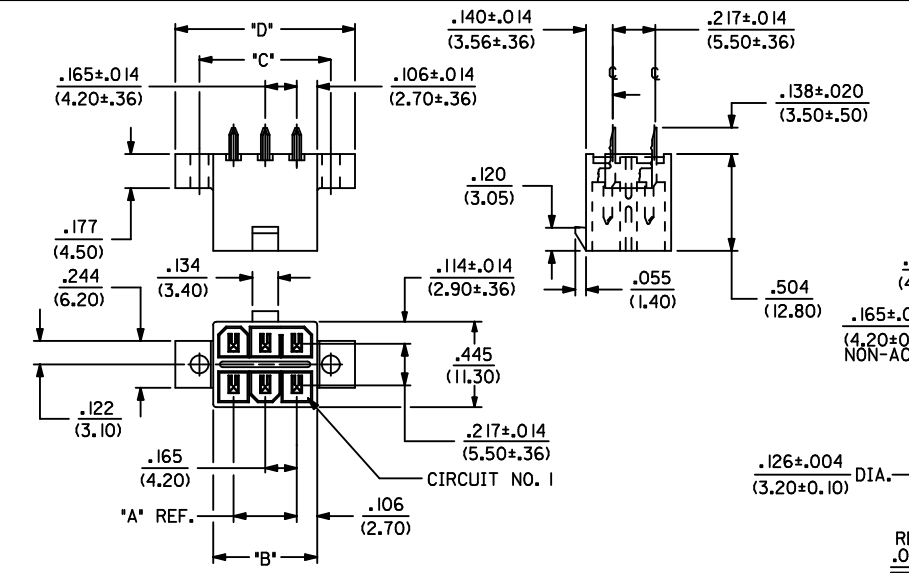


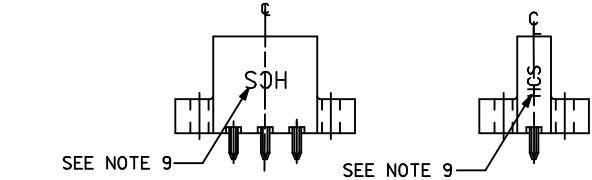
LETTER DIMENSIONS FOR ASSEMBLIES WITH FLANGES				
CKT. SIZE	DIM. "A"	DIM. "B"	DIM. "C"	DIM. "D"
2	—	.213 (5.40)	.354 (9.00)	.606 (15.40)
4	.165 (4.20)	.378 (9.60)	.520 (13.20)	.772 (19.60)
6	.331 (8.40)	.543 (13.80)	.685 (17.40)	.937 (23.80)
8	.496 (12.60)	.709 (18.00)	.850 (21.60)	1.102 (28.00)
10	.661 (16.80)	.874 (22.20)	1.016 (25.80)	1.268 (32.20)
12	.827 (21.00)	1.039 (26.40)	1.181 (30.00)	1.433 (36.40)
14	.992 (25.20)	1.205 (30.60)	1.346 (34.20)	1.598 (40.60)
16	1.157 (29.40)	1.370 (34.80)	1.512 (38.40)	1.764 (44.80)
18	1.520 (38.60)	1.732 (44.00)	1.874 (47.60)	2.126 (54.00)
20	1.685 (42.80)	1.898 (48.20)	2.039 (51.80)	2.291 (58.20)
22	1.850 (47.00)	2.063 (52.40)	2.205 (56.00)	2.457 (62.40)
24	2.016 (51.20)	2.228 (56.60)	2.370 (60.20)	2.622 (66.60)

FLANGE MOUNT
(SEE SHT. 2 FOR PARTS WITH PEGS)

- NOTES:
- HOUSING MATERIAL: POLYESTER, UNFILLED, 94V-0. COLOR: BLACK.
TERMINAL MATERIAL: COPPER ALLOY
 - PLATINGS:
1 = .000100/0.00254 MIN. BRIGHT TIN OVER
.000050/0.00127 MIN. NICKEL.
 - PRODUCT SPECIFICATION: PS-44476-001.
 - PACKAGING SPECIFICATION: PK-30069-001.
 - PART MATES WITH RECEPTACLE 30067-*.
6. PART IS DESIGNED FOR USE WITH #4-40 OR M3 SELF TAPPING SCREW.
 - CONNECTOR ASSEMBLIES ARE NOT TO BE MATED OR UNMATED WHILE CIRCUITS ARE LIVE.
 - ITEM NUMBERS PRECEDED BY AN "X" IN THE CHART ON SHEET 3 ARE NOT AVAILABLE.
 - PARTS WILL HAVE "HCS" MARKING.
 - PART CONFORMS TO CLASS "B" REQUIREMENTS OF COSMETIC SPECIFICATION PS-45499-002.



RECOMMENDED HOLE LAYOUT FOR
.070/(1.78) MAX. THICK P.C. BOARD



'HCS' ORIENTATION ON 2 CKT. PARTS

REVISED DRAWING REFERENCE EC NO: UCP2010-2129 DRWNG: JAGUILAR 2010/03/04 CHKD: JIBELL 2010/03/04 APPR: FSMITH 2010/04/14	QUALITY SYMBOLS ∇=0 ∇=0 ∇=0	GENERAL TOLERANCES (UNLESS SPECIFIED) <table border="1"> <thead> <tr> <th></th> <th>mm</th> <th>INCH</th> </tr> </thead> <tbody> <tr> <td>4 PLACES</td> <td>± .---</td> <td>± .---</td> </tr> <tr> <td>3 PLACES</td> <td>± .---</td> <td>± .010</td> </tr> <tr> <td>2 PLACES</td> <td>± 0.25</td> <td>± .014</td> </tr> <tr> <td>1 PLACE</td> <td>± 0.36</td> <td>± .---</td> </tr> </tbody> </table>		mm	INCH	4 PLACES	± .---	± .---	3 PLACES	± .---	± .010	2 PLACES	± 0.25	± .014	1 PLACE	± 0.36	± .---	DIMENSION STYLE IN/MM DRAWN BY: GEP DATE: 8/12/1994 CHECKED BY: RJF DATE: 8/12/1994 APPROVED BY: FSMITH DATE: 8/12/1994/109	SCALE 2:1 DESIGN UNITS METRIC THIRD ANGLE PROJECTION	TITLE T.P.A. VERT. HDR. ASS'Y FLANGES & PEGS, MINI-FIT HCS SERIES
		mm	INCH																	
	4 PLACES	± .---	± .---																	
	3 PLACES	± .---	± .010																	
2 PLACES	± 0.25	± .014																		
1 PLACE	± 0.36	± .---																		
REVISED DRAWING REFERENCE EC NO: UCP2010-2129 DRWNG: JAGUILAR 2010/03/04 CHKD: JIBELL 2010/03/04 APPR: FSMITH 2010/04/14	QUALITY SYMBOLS ∇=0 ∇=0 ∇=0	GENERAL TOLERANCES (UNLESS SPECIFIED) <table border="1"> <thead> <tr> <th></th> <th>mm</th> <th>INCH</th> </tr> </thead> <tbody> <tr> <td>4 PLACES</td> <td>± .---</td> <td>± .---</td> </tr> <tr> <td>3 PLACES</td> <td>± .---</td> <td>± .010</td> </tr> <tr> <td>2 PLACES</td> <td>± 0.25</td> <td>± .014</td> </tr> <tr> <td>1 PLACE</td> <td>± 0.36</td> <td>± .---</td> </tr> </tbody> </table>		mm	INCH	4 PLACES	± .---	± .---	3 PLACES	± .---	± .010	2 PLACES	± 0.25	± .014	1 PLACE	± 0.36	± .---	DIMENSION STYLE IN/MM DRAWN BY: GEP DATE: 8/12/1994 CHECKED BY: RJF DATE: 8/12/1994 APPROVED BY: FSMITH DATE: 8/12/1994/109	SCALE 2:1 DESIGN UNITS METRIC THIRD ANGLE PROJECTION	TITLE T.P.A. VERT. HDR. ASS'Y FLANGES & PEGS, MINI-FIT HCS SERIES
	mm	INCH																		
4 PLACES	± .---	± .---																		
3 PLACES	± .---	± .010																		
2 PLACES	± 0.25	± .014																		
1 PLACE	± 0.36	± .---																		
REVISED DRAWING REFERENCE EC NO: UCP2010-2129 DRWNG: JAGUILAR 2010/03/04 CHKD: JIBELL 2010/03/04 APPR: FSMITH 2010/04/14	QUALITY SYMBOLS ∇=0 ∇=0 ∇=0	GENERAL TOLERANCES (UNLESS SPECIFIED) <table border="1"> <thead> <tr> <th></th> <th>mm</th> <th>INCH</th> </tr> </thead> <tbody> <tr> <td>4 PLACES</td> <td>± .---</td> <td>± .---</td> </tr> <tr> <td>3 PLACES</td> <td>± .---</td> <td>± .010</td> </tr> <tr> <td>2 PLACES</td> <td>± 0.25</td> <td>± .014</td> </tr> <tr> <td>1 PLACE</td> <td>± 0.36</td> <td>± .---</td> </tr> </tbody> </table>		mm	INCH	4 PLACES	± .---	± .---	3 PLACES	± .---	± .010	2 PLACES	± 0.25	± .014	1 PLACE	± 0.36	± .---	DIMENSION STYLE IN/MM DRAWN BY: GEP DATE: 8/12/1994 CHECKED BY: RJF DATE: 8/12/1994 APPROVED BY: FSMITH DATE: 8/12/1994/109	SCALE 2:1 DESIGN UNITS METRIC THIRD ANGLE PROJECTION	TITLE T.P.A. VERT. HDR. ASS'Y FLANGES & PEGS, MINI-FIT HCS SERIES
	mm	INCH																		
4 PLACES	± .---	± .---																		
3 PLACES	± .---	± .010																		
2 PLACES	± 0.25	± .014																		
1 PLACE	± 0.36	± .---																		
REVISED DRAWING REFERENCE EC NO: UCP2010-2129 DRWNG: JAGUILAR 2010/03/04 CHKD: JIBELL 2010/03/04 APPR: FSMITH 2010/04/14	QUALITY SYMBOLS ∇=0 ∇=0 ∇=0	GENERAL TOLERANCES (UNLESS SPECIFIED) <table border="1"> <thead> <tr> <th></th> <th>mm</th> <th>INCH</th> </tr> </thead> <tbody> <tr> <td>4 PLACES</td> <td>± .---</td> <td>± .---</td> </tr> <tr> <td>3 PLACES</td> <td>± .---</td> <td>± .010</td> </tr> <tr> <td>2 PLACES</td> <td>± 0.25</td> <td>± .014</td> </tr> <tr> <td>1 PLACE</td> <td>± 0.36</td> <td>± .---</td> </tr> </tbody> </table>		mm	INCH	4 PLACES	± .---	± .---	3 PLACES	± .---	± .010	2 PLACES	± 0.25	± .014	1 PLACE	± 0.36	± .---	DIMENSION STYLE IN/MM DRAWN BY: GEP DATE: 8/12/1994 CHECKED BY: RJF DATE: 8/12/1994 APPROVED BY: FSMITH DATE: 8/12/1994/109	SCALE 2:1 DESIGN UNITS METRIC THIRD ANGLE PROJECTION	TITLE T.P.A. VERT. HDR. ASS'Y FLANGES & PEGS, MINI-FIT HCS SERIES
	mm	INCH																		
4 PLACES	± .---	± .---																		
3 PLACES	± .---	± .010																		
2 PLACES	± 0.25	± .014																		
1 PLACE	± 0.36	± .---																		

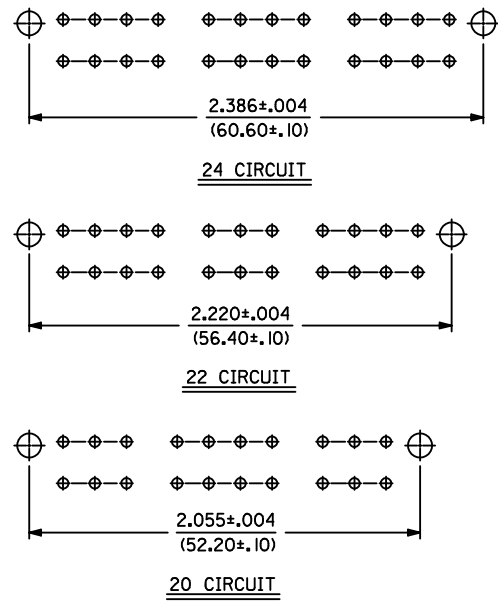
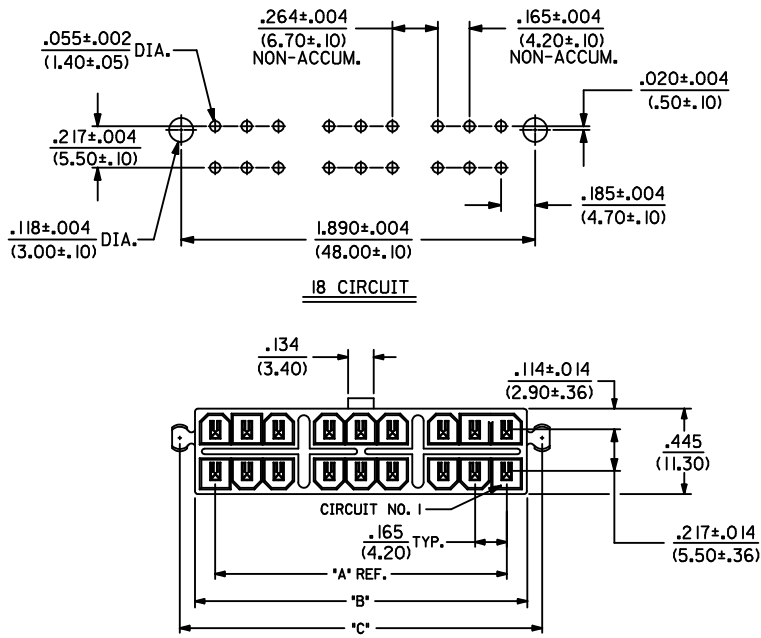
3	C1
2	C1
1	C1

DRAFT WHERE APPLICABLE
MUST REMAIN
WITHIN DIMENSIONS

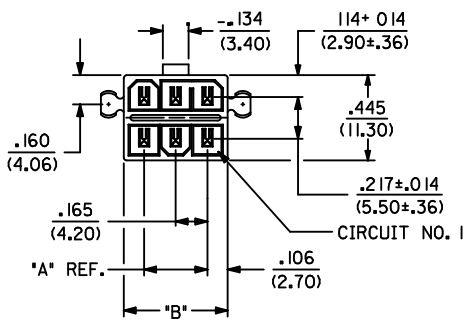
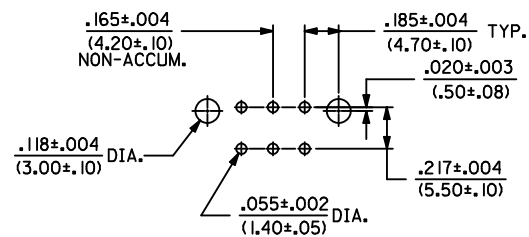
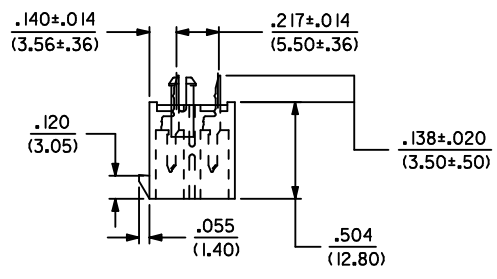
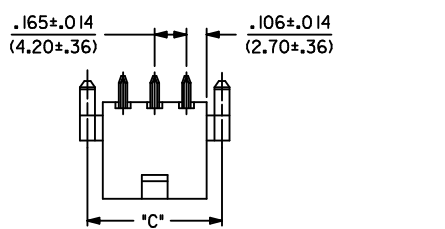
SEE SHT. 3

THIS DRAWING CONTAINS INFORMATION THAT IS PROPRIETARY TO MOLEX INCORPORATED AND SHOULD NOT BE USED WITHOUT WRITTEN PERMISSION

MOLEX INCORPORATED
SDA-44473-****
SHEET NO. 1 OF 3



LETTER DIMENSIONS FOR ASSEMBLIES WITH PEGS			
CKT. SIZE	DIM. "A"	DIM. "B"	DIM. "C"
2	—	.213 (5.40)	.370 (9.40)
4	.165 (4.20)	.378 (9.60)	.535 (13.60)
6	.331 (8.40)	.543 (13.80)	.701 (17.80)
8	.496 (12.60)	.709 (18.00)	.866 (22.00)
10	.661 (16.80)	.874 (22.20)	1.031 (26.20)
12	.827 (21.00)	1.039 (26.40)	1.197 (30.40)
14	.992 (25.20)	1.205 (30.60)	1.362 (34.60)
16	1.157 (29.40)	1.370 (34.80)	1.528 (38.80)
18	1.520 (38.60)	1.732 (44.00)	1.890 (48.00)
20	1.685 (42.80)	1.898 (48.20)	2.055 (52.20)
22	1.850 (47.00)	2.063 (52.40)	2.220 (56.40)
24	2.016 (51.20)	2.228 (56.60)	2.386 (60.60)



LEGEND

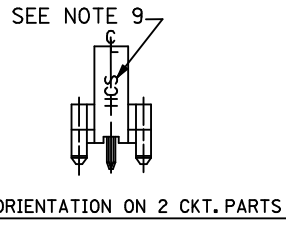
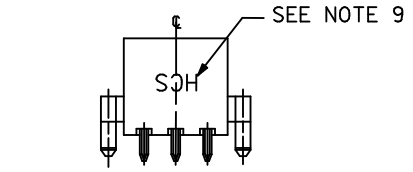
44473 - ** **

BASE NO. _____

CKT. SIZE (02-24) _____

HOUSING OPTIONS:
1 = FLANGES
3 = PEGS

PLATING:
1 = TIN OVER NICKEL



REV	DESCRIPTION
C1	RMD DRAIN HOLE OPTION EC NO: UCP2010-2129 DRWNG: JAGUILAR 2010/03/04 CHKD: J.BELL 2010/03/04 APPR: F.SMITH 2010/04/14

QUALITY SYMBOLS	
$\nabla = 0$	
$\nabla = 0$	
$\nabla = 0$	

GENERAL TOLERANCES (UNLESS SPECIFIED)	
	mm
	INCH
4 PLACES	± .010
3 PLACES	± .010
2 PLACES	± .025
1 PLACE	± .036
ANGULAR ± 1/2°	

DIMENSION STYLE		SCALE	DESIGN UNITS	THIRD ANGLE PROJECTION
IN/MM		2:1	METRIC	
DRAWN BY: GEP		DATE: 8/15/1994	TITLE: T.P.A VERT HDR ASS'Y FLANGES & PEGS MINI-FIT H.C.S SERIES	
CHECKED BY: R.J.F.		DATE: 8/15/1994	MOLEX INCORPORATED	
APPROVED BY: FSM		DATE: 8/15/1994	DOCUMENT NO. SDA-44473-****	
MATERIAL NO. SEE SHT. 3		SHEET NO. 2 OF 3		
DRAFT WHERE APPLICABLE MUST REMAIN WITHIN DIMENSIONS				
THIS DRAWING CONTAINS INFORMATION THAT IS PROPRIETARY TO MOLEX INCORPORATED AND SHOULD NOT BE USED WITHOUT WRITTEN PERMISSION				

13			12			11			10			9			8			7			6			5			4			3			2			1					
WITH FLANGES, NO DRAIN HOLES			WITH PEGS, NO DRAIN HOLES			WITH FLANGES, NO DRAIN HOLES			WITH PEGS, NO DRAIN HOLES			WITH FLANGES, NO DRAIN HOLES			WITH PEGS, NO DRAIN HOLES			WITH FLANGES, NO DRAIN HOLES			WITH PEGS, NO DRAIN HOLES			WITH FLANGES, NO DRAIN HOLES			WITH PEGS, NO DRAIN HOLES			WITH FLANGES, NO DRAIN HOLES			WITH PEGS, NO DRAIN HOLES			WITH FLANGES, NO DRAIN HOLES			WITH PEGS, NO DRAIN HOLES		
CKT. SIZE	ITEM NO.	PLATING SEE NOTE 6	CKT. SIZE	ITEM NO.	PLATING SEE NOTE 6	CKT. SIZE	ITEM NO.	PLATING SEE NOTE 6	CKT. SIZE	ITEM NO.	PLATING SEE NOTE 6	CKT. SIZE	ITEM NO.	PLATING SEE NOTE 6	CKT. SIZE	ITEM NO.	PLATING SEE NOTE 6	CKT. SIZE	ITEM NO.	PLATING SEE NOTE 6	CKT. SIZE	ITEM NO.	PLATING SEE NOTE 6	CKT. SIZE	ITEM NO.	PLATING SEE NOTE 6	CKT. SIZE	ITEM NO.	PLATING SEE NOTE 6	CKT. SIZE	ITEM NO.	PLATING SEE NOTE 6									
2	44473-0211	I	2	44473-0231	I	2			2			2			2			2			2			2			2			2			2			2					
4	44473-0411	↑	4	44473-0431	↑	4			4			4			4			4			4			4			4			4			4			4					
6	44473-0611		6	44473-0631		6			6			6			6			6			6			6			6			6			6			6					
8	44473-0811		8	44473-0831		8			8			8			8			8			8			8			8			8			8			8					
10	44473-1011		10	44473-1031		10			10			10			10			10			10			10			10			10			10			10					
12	44473-1211		12	44473-1231		12			12			12			12			12			12			12			12			12			12			12					
14	X 44473-1411		14	X 44473-1431		14			14			14			14			14			14			14			14			14			14			14					
16	44473-1611		16	X 44473-1631		16			16			16			16			16			16			16			16			16			16			16					
18	X 44473-1811		18	X 44473-1831		18			18			18			18			18			18			18			18			18			18			18					
20	X 44473-2011		20	X 44473-2031		20			20			20			20			20			20			20			20			20			20			20					
22	X 44473-2211	↓	22	X 44473-2231	↓	22			22			22			22			22			22			22			22			22			22			22					
24	X 44473-2411	I	24	X 44473-2431	I	24			24			24			24			24			24			24			24			24			24			24					

SEE NOTE 8

REMOVED DRAIN HOLES EC NO: UCP2010-2129 DRWN: JAGUILAR 2010/03/04 CHKD: J BELL 2010/03/04 APPR: FSMITH 2010/04/14 DESCRIPTION	QUALITY SYMBOLS	GENERAL TOLERANCES (UNLESS SPECIFIED)	DIMENSION STYLE	SCALE	DESIGN UNITS	THIRD ANGLE PROJECTION
	▽=0	mm INCH	IN/MM	1:1	METRIC	
	▽=0	4 PLACES ± --- ± ---	DRAWN BY DATE	TITLE T.P.A. VERT. HDR. ASS'Y FLANGES & PEGS MINI-FIT H.C.S. SERIES		
	▽=0	3 PLACES ± --- ± ---	GEP 8/15/1994			
	2 PLACES ± --- ± ---	CHECKED BY DATE	MOLEX INCORPORATED DOCUMENT NO.			
	1 PLACE ± --- ± ---	RJF 8/15/1994				
	ANGULAR ±1/2°	APPROVED BY DATE	SHEET NO. 3 OF 3			
		FSMIRHF 8/12/2010				
		MATERIAL NO.	SIZE SEE CHART SDA-44473-****			
		DRAFT WHERE APPLICABLE MUST REMAIN WITHIN DIMENSIONS	THIS DRAWING CONTAINS INFORMATION THAT IS PROPRIETARY TO MOLEX INCORPORATED AND SHOULD NOT BE USED WITHOUT WRITTEN PERMISSION			