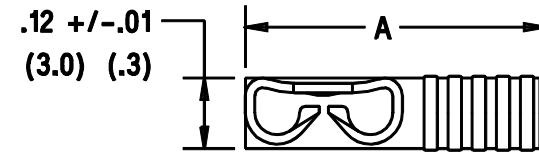


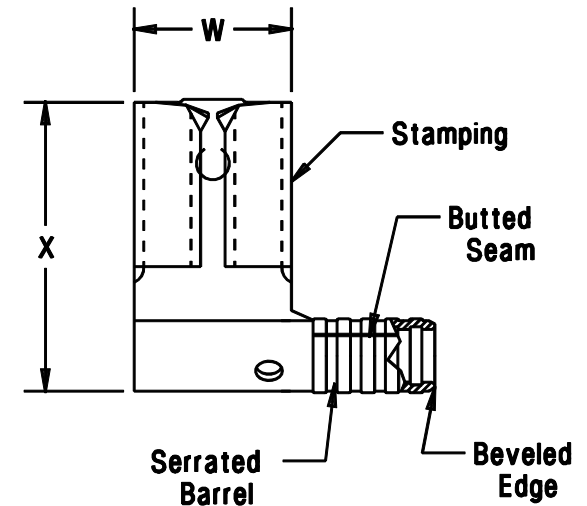
Part number		Tab size	Wire range AWG	Dimensions (inches)		
Prefix	PK			X ^{+/-02}	W ^{+/-01}	A ^{+/-02}
DR18-250B	-C -M	.250 X .032 (6.3 X 0.8)	22-18	.53 (13.5)	.30 (7.6)	.55 (14.0)
DR14-250B	-C -M	.250 X .032 (6.3 X 0.8)	16-14	.55 (14.0)	.30 (7.6)	.55 (14.0)

(.5)



Notes:

- CSA Certified For:
 - 302° F (150° C) maximum temperature rating
 - Stranded copper wire only
- Material:
 - Stamping: .018" (0.46) thick tin plated brass
- Package quantity:
 - Standard: -C = 100,
 - Bulk : -M = 1000,
- First insertion force: 12 Lb (53 N) maximum
 First withdrawal force: 12 Lb (53 N) maximum
 6 Lb (27 N) minimum
- Dimensions in brackets are in millimeters or mm²
- Installation tools:
 - CSA Certified: CT-100
 - Panduit Approved: CT-200
- Wire Strip Length: 9/32 ^{+1/32}₋₀ (7.1 ⁺⁸₋₀)



CERTIFIED
LR31212

A41326_04

				PANDUIT CORP. TINLEY PARK, ILLINOIS							
04	1/01	RM		FILESPEC WAS N41326AA_PCD_03		Non-insulated right angle Butted Seam female disconnect, .250 X .032 Male Tab					
03	11-94	TH		Updated Notes and Dimensions	02680						
REV	DATE	BY	CHK	DESCRIPTION	ECN #	CUST	PM	DRAWN BY DAW	CHK'D	SCALE None	DRAWING NO. A41326