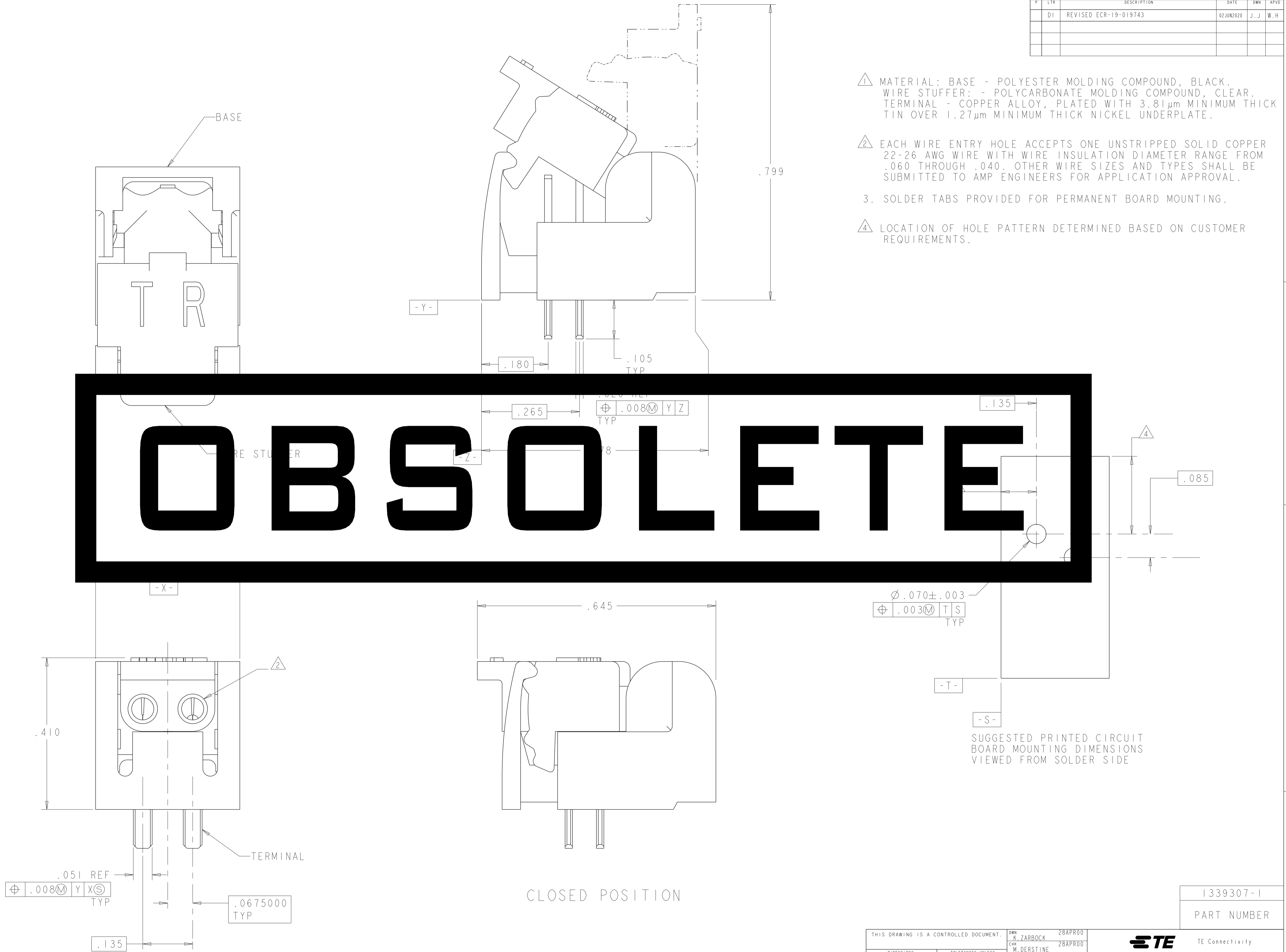


REVISIONS				
P	LTN	DESCRIPTION	DATE	APVD
D1		REVISED ECR-19-019743	02JUN2020	J. J. W. H.



- △ MATERIAL: BASE - POLYESTER MOLDING COMPOUND, BLACK.
WIRE STUFFER: - POLYCARBONATE MOLDING COMPOUND, CLEAR.
TERMINAL - COPPER ALLOY, PLATED WITH 3.81µm MINIMUM THICK TIN OVER 1.27µm MINIMUM THICK NICKEL UNDERPLATE.
- △ EACH WIRE ENTRY HOLE ACCEPTS ONE UNSTRIPPED SOLID COPPER 22-26 AWG WIRE WITH WIRE INSULATION DIAMETER RANGE FROM .060 THROUGH .040. OTHER WIRE SIZES AND TYPES SHALL BE SUBMITTED TO AMP ENGINEERS FOR APPLICATION APPROVAL.
- 3. SOLDER TABS PROVIDED FOR PERMANENT BOARD MOUNTING.
- △ LOCATION OF HOLE PATTERN DETERMINED BASED ON CUSTOMER REQUIREMENTS.

SUGGESTED PRINTED CIRCUIT BOARD MOUNTING DIMENSIONS VIEWED FROM SOLDER SIDE

1339307-1
PART NUMBER

THIS DRAWING IS A CONTROLLED DOCUMENT.		DWN: R. ZARBOCK 28APROO	TE Connectivity
DIMENSIONS: INCHES		CHK: M. DERSTINE 28APROO	
TOLERANCES UNLESS OTHERWISE SPECIFIED: 0 PLC ±. 1 PLC ±.01 2 PLC ±.01 3 PLC ±.005 4 PLC ±. ANGLES ±2° FINISH -		APVD: M. DERSTINE 28APROO	NAME: ASSEMBLY, SINGLE PAIR, SINGLE ENTRY, PIVOT II CONNECTOR
MATERIAL: △		SIZE: A 00779 C=1339307	RESTRICTED TO: REV: D1
		WEIGHT: -	CUSTOMER DRAWING
		SCALE: 8:1	SHEET: 1 OF 1