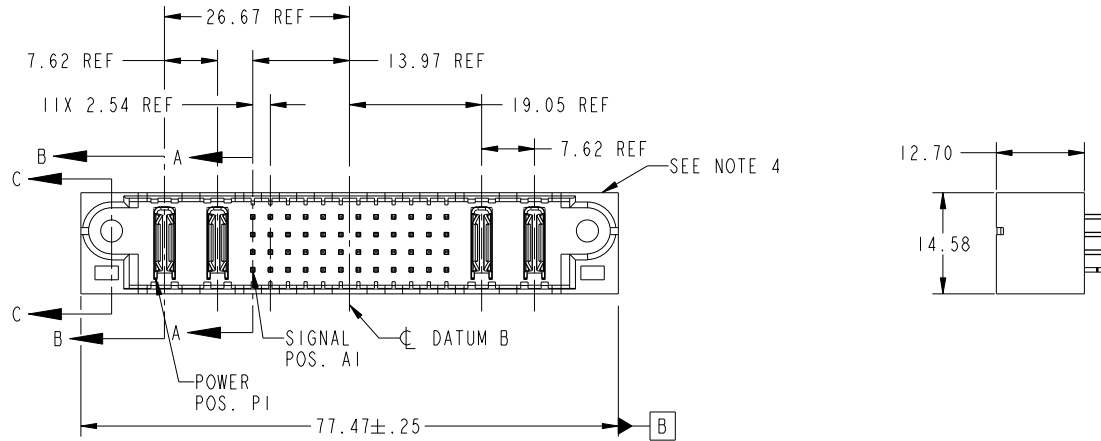


Tous droits strictement réservés. Reproduction ou communication a des tiers interdite sous quelque forme que ce soit sans autorisation écrite du propriétaire. Propriete de c FCI. Droits de reproduction FCI.

All rights strictly reserved. Reproduction or issue to third parties in any form whatever is not permitted without written authority from the proprietor. Property of FCI. Copyright FCI.



PRODUCT NO.	ROWS	POWER		SIGNAL												POWER		E2	
		E1	P1	P2	1	2	3	4	5	6	7	8	9	10	11	12	P3		P4
51952-115-- NOTE ③	D C B A																		



CODE	DIM "M" MATING LENGTH	CONTACT TYPE
PA	[N/A]	POWER
E	[6.86]	SIGNAL
HA	[N/A]	HOLD-DOWN

mat'l code				tolerances unless otherwise specified			CUSTOMER		FCI	
ltr	ecn no.	dr	date	linear	0.X ±0.3	COPY		www.fciconnect.com		
A	DG07-0092	JMG	03/20/07	angles	0.XX ±0.13	projection		title		
					0.XXX ±0.051			2ACP + 48S + 2ACP VERTICAL SOLDER HEADER		
				dr	0° ±2°	MIM		product family		code
				enr	JM GUO 03/20/07			PwrBlade		213
				chr	RYAN YUAN 03/20/07	scale		size		sheet
				appd	GARY HSI EH 03/20/07	1:1		dwg no		1 of 4
					JOSEPH HSIA 03/20/07			51952-115		
sheet index	revision sheet	A	A	A	A			cage code		B
1	2	3	4					22526		4

Pro/E

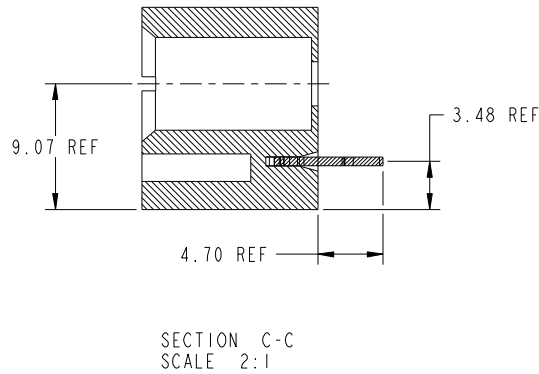
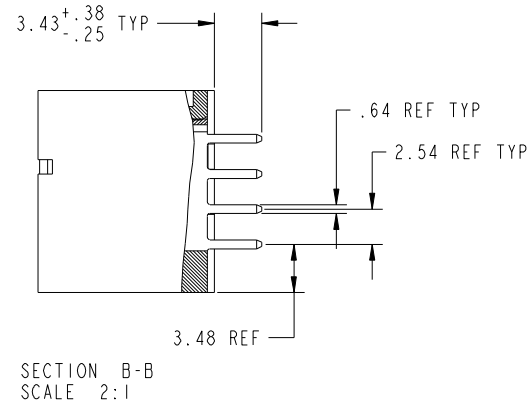
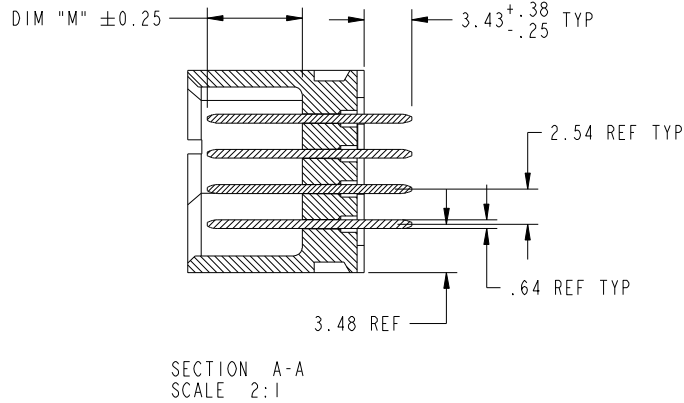
cage code 22526

Tous droits strictement reserves. Reproduction ou communication a des tiers interdite sous quelque forme que ce soit sans autorisation écrite du propriétaire. Propriete de c FCI. Droits de reproduction FCI.

All rights strictly reserved. Reproduction or issue to third parties in any form whatever is not permitted without written authority from the proprietor. Property of FCI. Copyright FCI.



PRODUCT NUMBER  
51952-115\_\_  
NOTE 3



mat'l code				tolerances unless otherwise specified		CUSTOMER		 www.fciconnect.com	
ltr	ecn no.	dr	date	linear	0.X ±0.3	COPY		title	
A					0.XX ±0.13	projection		2ACP + 48S + 2ACP VERTICAL SOLDER HEADER	
				angles	0.XXX ±0.051			product family PwrBlade code	
				dr	0° ±2°	MIM		213	
				enr	JM GUO 03/20/07	scale		size	
				chr	RYAN YUAN 03/20/07	1:1		dwg no	
				appd	GARY HSIEH 03/20/07			51952-115	
					JOSEPH HSIA 03/20/07			sheet	
sheet index		revision sheet						2 of 4	

cage code 22526

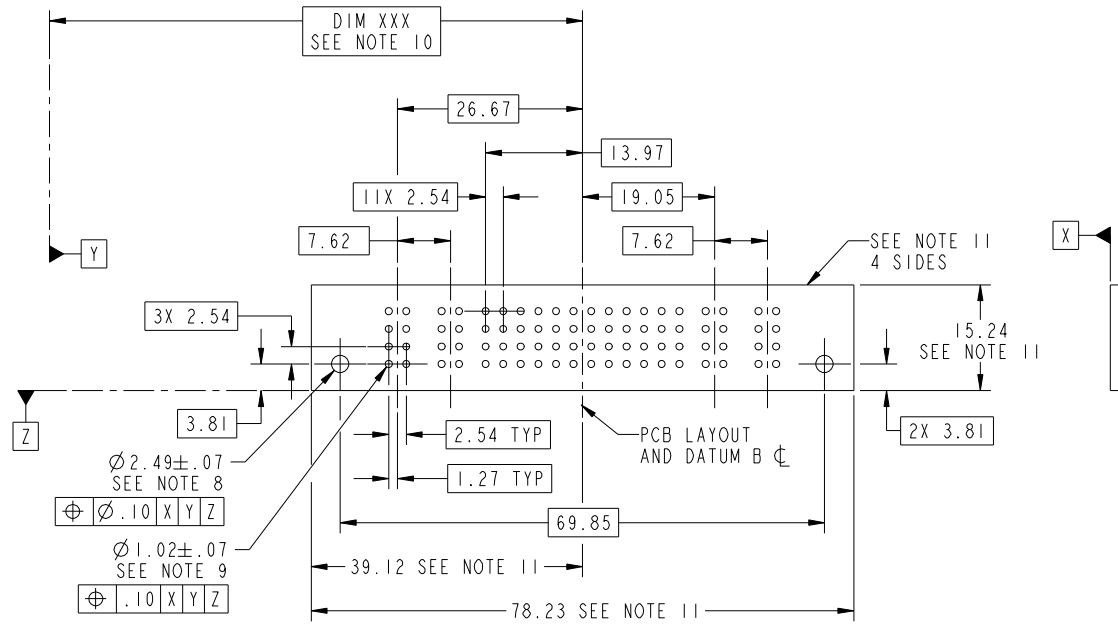
Pro/E

Tous droits strictement reserves. Reproduction ou communication a des tiers interdite sous quelque forme que ce soit sans autorisation ecrite du proprietaire. Propriete de c FCI. Droits de reproduction FCI.



All rights strictly reserved. Reproduction or issue to third parties in any form whatever is not permitted without written authority from the proprietor. Property of FCI. Copyright FCI.

PRODUCT NUMBER  
51952-115\_\_  
NOTE 3



mat'l code				tolerances unless otherwise specified		CUSTOMER		www.fciconnect.com	
ltr	ecn no.	dr	date	linear	0.X ±0.3	COPY		title	
A					0.XX ±0.13	projection		2ACP + 48S + 2ACP VERTICAL SOLDER HEADER	
				angles	0.XXX ±0.051			product family PwrBlade code	
				dr	0° ±2°			size	
				enr	JM GUO 03/20/07	scale		213	
				chr	RYAN YUAN 03/20/07	1:1		dwg no	
				appd	GARY HSIEH 03/20/07			51952-115	
					JOSEPH HSIA 03/20/07			sheet	
sheet index	revision sheet							3 of 4	

cage code 22526

Pro/E

Tous droits strictement reserves. Reproduction ou communication a des tiers interdite sous quelque forme que ce soit sans autorisation écrite du propriétaire. Propriete de c FCI. Droits de reproduction FCI.



All rights strictly reserved. Reproduction or issue to third parties in any form whatever is not permitted without written authority from the proprietor. Property of FCI. Copyright FCI.

PRODUCT NUMBER  
51952-115--  
NOTE 3

NOTES:

1. DIMENSIONS AND TOLERANCES ARE IN ACCORDANCE WITH ASME Y14.5M, 1994 UNLESS OTHERWISE SPECIFIED.

CONNECTOR NOTES:

- ② HOUSING MATERIAL: UL 94 V-0 GLASS FILLED HIGH-TEMP THERMOPLASTIC  
POWER CONTACT MATERIAL: COPPER ALLOY  
SIGNAL PIN MATERIAL: COPPER ALLOY
- 3. PLATING:  
51952-115 ,51952-115LF PLATING SPEC. WAS SHOWN IN THE PRINT OF 10064183.
- ④ MANUFACTURER'S NAME, P/N, AND DATE CODE TO APPEAR ON THIS SURFACE.
- 5. PRODUCT SPECIFICATION GS-12-149.  
APPLICATION SPECIFICATION BUS-20-067.
- 6. PACKAGED IN TRAYS.

PCB NOTES:

- 7. ALL HOLE DIAMETERS ARE FINISHED HOLE SIZE.
- 8. MOUNTING HOLES, WHERE APPLICABLE, ARE UNPLATED.
- ⑨  $\varnothing 1.151 \pm 0.025$  DRILLED HOLES PLATED WITH  
0.008 MIN SnPb OR Sn OVER 0.03  
TO 0.08 Cu PLATING TO ACHIEVE  
 $\varnothing 1.02 \pm .07$  HOLE.
- ⑩ "DIM XXX" TO BE DETERMINED BY THE CUSTOMER.
- ⑪ CONNECTOR KEEP-OUT ZONE.

mat'l code				tolerances unless otherwise specified		CUSTOMER			
ltr	ecn no.	dr	date	linear	0.X ± 0.3	COPY		www.fciconnect.com	
A					0.XX ± 0.13	projection		title	
				angles	0.XXX ± 0.051			2ACP + 48S + 2ACP VERTICAL SOLDER HEADER	
				dr	0° ± 2°	MIM		product family PwrBlade code	
				enrg	JM GUO 03/20/07			size 213	
				chr	RYAN YUAN 03/20/07	scale		dwg no 51952-115 sheet	
				appd	GARY HSIEH 03/20/07	1:1		4 of 4	
					JOSEPH HSIA 03/20/07	A			
sheet index	revision sheet								

cage code 22526

Pro/E