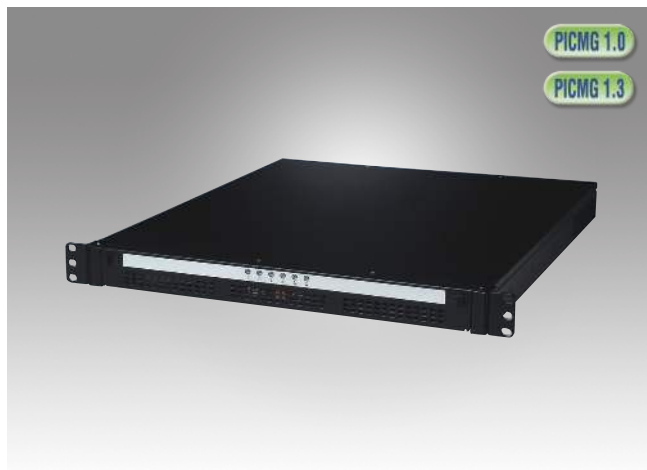


# ACP-1010

## 1U Rackmount Chassis for Full-size SHB/SBC or ATX/MicroATX Motherboard



### Features

- Supports full-size SHB/SBC or ATX/MicroATX motherboards
- LED indicators for power, HDD, temperature, fan, LAN1 and LAN2
- Supports up to 2 expansion slots in BP version, and 1 expansion slot via riser card in MB version
- Supports both 250W/350W Flex ATX/PFC power supplies

CE FCC

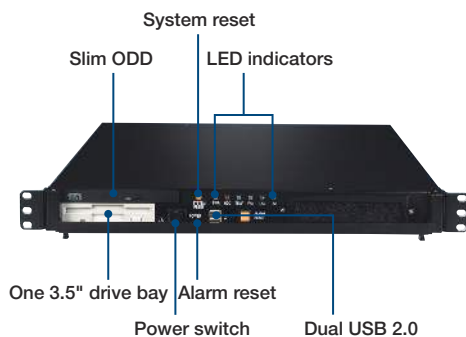
### Specifications

		External	Internal
Driver bay	Slim Optical Disk Drive	1	-
	3.5"	1	1*
	2.5"	-	2*
Cooling	Fan	BP: 4 (4 cm/24 CFM x 3 + 15 CFM x 1) MB: 2 (4 cm/24 CFM each)	
Front I/O Interface	USB 2.0	2	
Miscellaneous	Notification LEDs	System: Power, HDD, Temperature, Fan, LAN1 and LAN2	
	Control	Power switch, system reset & alarm reset button	
	Rear panel	One 9-pin D-Sub opening	
Environment	Temperature	Operating 0 ~ 40 °C (32 ~ 104 °F)	Non-Operating -20 ~ 60 °C (-4 ~ 140 °F)
	Humidity	10 ~ 85% @ 40 °C, non-condensing	10 ~ 95% @ 40 °C, non-condensing
	Vibration (5 ~ 500 Hz)	0.5 Grms	2 Grms
	Shock	10 G (with 11 ms duration, half sine wave)	
	Physical Characteristics	Dimensions (W x H x D)	480 x 44 x 497 mm (19" x 1.7" x 19.6")
	Weight	8 kg (17.6 lb)	

\* Internal driver bay can choose 1 x 3.5" or 2 x 2.5"

\* ACP-1010 supports up to CPU 65W under 35 °C for thermal concern.

### Front View



### Back View



ACP-1010BP

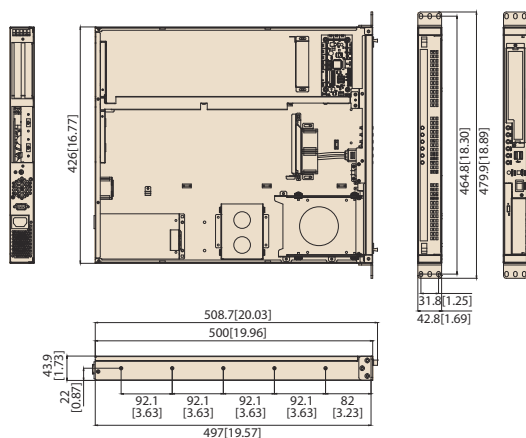


ACP-1010MB

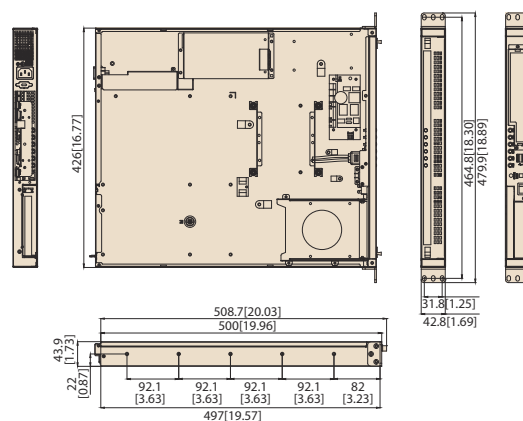
## Dimensions

Unit: mm [inch]

### ACP-1010BP



### ACP-1010MB



## Ordering Information

Part Number	Description
<b>Backplane Version</b>	
ACP-1010BP-00BE	BP version W/O PSU
<b>Motherboard Version</b>	
ACP-1010MB-00BE	MB version W/O PSU

\*ACP-1010MB does not support AIMB-763, 542, 562 and 564 because the height of the audio connector is over 1U.

## Power Supply Options

(For detailed power supply specs, please refer to Chapter 13)

Part Number	80 Plus Bronze	Wattage	Type	Input
PS8-250FATX-XE	Bronze	250W	Single	AC 100 ~ 240 V (full range)
PS8-350FATX-XE	Bronze	350W	Single	AC 100 ~ 240 V (full range)

## Spare Parts

Part Name	Description
2130007889S000	Filter 170 x 32 x 5 mm for ACP-1010

## Optional Accessories

Part Name	Description
96CB-SATAPOWER-6P2	SATA power wire 6-pin to big 4-pin ( for slim ODD )
<b>I/O shield</b>	
1960055954T000	I/O shield for AIMB-701/781/782/581
1960048353T000	I/O shield for AIMB-767/769/780/566/580

## Backplane Options

Part Name	Slot	CPU Card
<b>PICMG 1.3</b>		
PCE-5B03V-01A1E	One CPU, one PCIe x16, one PCI (32-bit/33MHz)	PCE-5000 Series
PCE-5B03V-00A1E	One CPU, one PCIe x16, one PCIe x4	
PCE-7B03V-01A1E	One CPU, one PCIe x8, one PCI	PCE-7000 Series
PCE-7B03V-00A1E	One CPU, two PCIe x8	
<b>PICMG 1.0</b>		
989K610302E (PCA-6103P2V-0A2E)	One CPU, 2 PCI (320bit/33MHz)	PICMG 1.0 Full-Size SBC