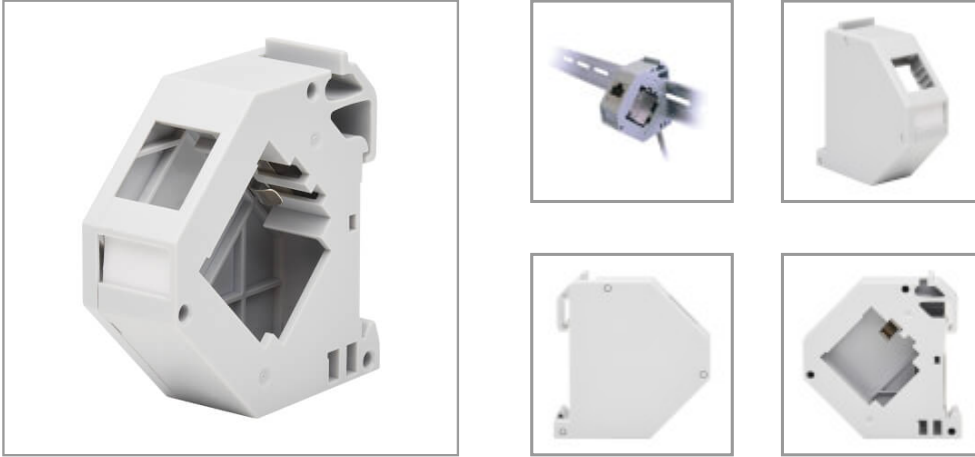


DIN-Rail Mounting Enclosure Module for Snap-In Keystone Jacks and Couplers, Left Cover, TAA

MODEL NUMBER: **N063-001-ENC-K1**



Accepts a snap-in keystone jack or coupler to help you manage your industrial DIN-rail network cable application.

Features

Organizes Ethernet Network Patch Cables in Your Industrial DIN-Rail Installation

This DIN-rail mounting module lets you manage network cable interconnectivity with one blank cutout, which accommodates all snap-in keystone jacks and in-line couplers. Made from durable plastic with a phosphor bronze grounding spring, the N063-001-ENC-K1 is quick and easy to install on a standard 35-millimeter DIN rail using the built-in mounting clip.

Easy to Install in Rugged Industrial Applications

The N063-001-ENC-K1 is designed to allow side-by-side mounting for network applications. The plastic left cover protects the interior jack and cabling from harsh conditions. A designation label is included to help you identify the connection at a glance.

TAA-Compliant for GSA Schedule Purchases

The N063-001-ENC-K1 is compliant with the Federal Trade Agreements Act (TAA), which makes it eligible for GSA (General Services Administration) Schedule and other federal procurement contracts.

Specifications

OVERVIEW	
UPC Code	037332276902
Technology	Cat5/5e; Cat6; Cat6a
Firmware / Software Docs	
Offset Ports	No
PHYSICAL	

Highlights

- Durable plastic construction recommended for industrial Ethernet network applications
- Front blank cutout compatible with all keystone jacks and couplers
- Plastic left cover and grounding contact spring help protect interior cable connection
- Built-in mounting clip attaches easily to standard 35 mm DIN rail with no tools needed
- Compliant with the Federal Trade Agreements Act (TAA) for GSA Schedule purchases

Package Includes

N063-001-ENC-K1 DIN-Rail Mounting Enclosure Module

Primary Form Factor	DIN-Rail
Color	Gray
Material of Construction	Housing/Removable Enclosure Cover: PC FRV2 Plastic, Spring: Phosphor Bronze
Total Number of Ports	1
Shipping Dimensions (hwd / in.)	7.87 x 4.33 x 0.50
Shipping Weight (lbs.)	0.05
Unit Dimensions (hwd / in.)	2.320 x 2.390 x 0.850
ENVIRONMENTAL	
Operating Temperature Range	-13° to 122°F (-25° to 50°C)
Storage Temperature Range	-40° to 158°F (-40° to 70°C)
Operating Humidity Range	10% to 85% RH, Non-Condensing
Storage Humidity Range	10% to 85% RH, (Non-Condensing)
CONNECTIONS	
Number of Ports	1
Side A - Connector 1	KEYSTONE JACK CUTOUT
FEATURES & SPECIFICATIONS	
All-in-One Kit	No
Antibacterial	No
IP68 Rated	No
IP20 Rated	No
Numbered Ports	No
DIN Mountable	Yes
Keystone Jacks	Yes
Built-in Cables	No
Color-Coded Connections	No
EIA/TIA 2/32 Spacing	No
Labeled Ports	Yes
Down-Angled Ports	No
Panel Applications	Ethernet
STANDARDS & COMPLIANCE	
Product Compliance	CE (Europe); REACH; RoHS; UKCA; Trade Agreements Act (TAA)
WARRANTY & SUPPORT	



1000 Eaton Boulevard
Cleveland, OH 44122
United States

Product Warranty Period (Worldwide)	Lifetime limited warranty
--	---------------------------



© 2023 Eaton. All Rights Reserved.
Eaton is a registered trademark. All other trademarks
are the property of their respective owners.