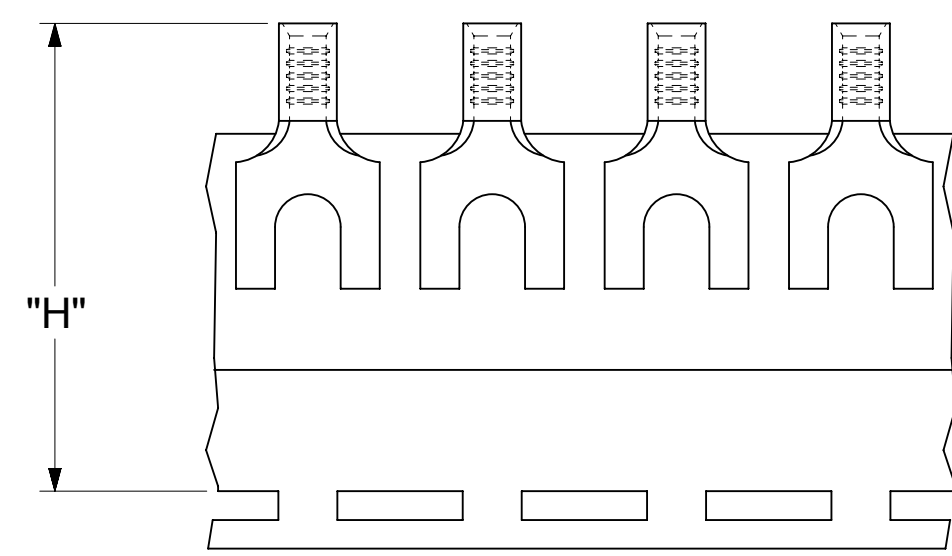
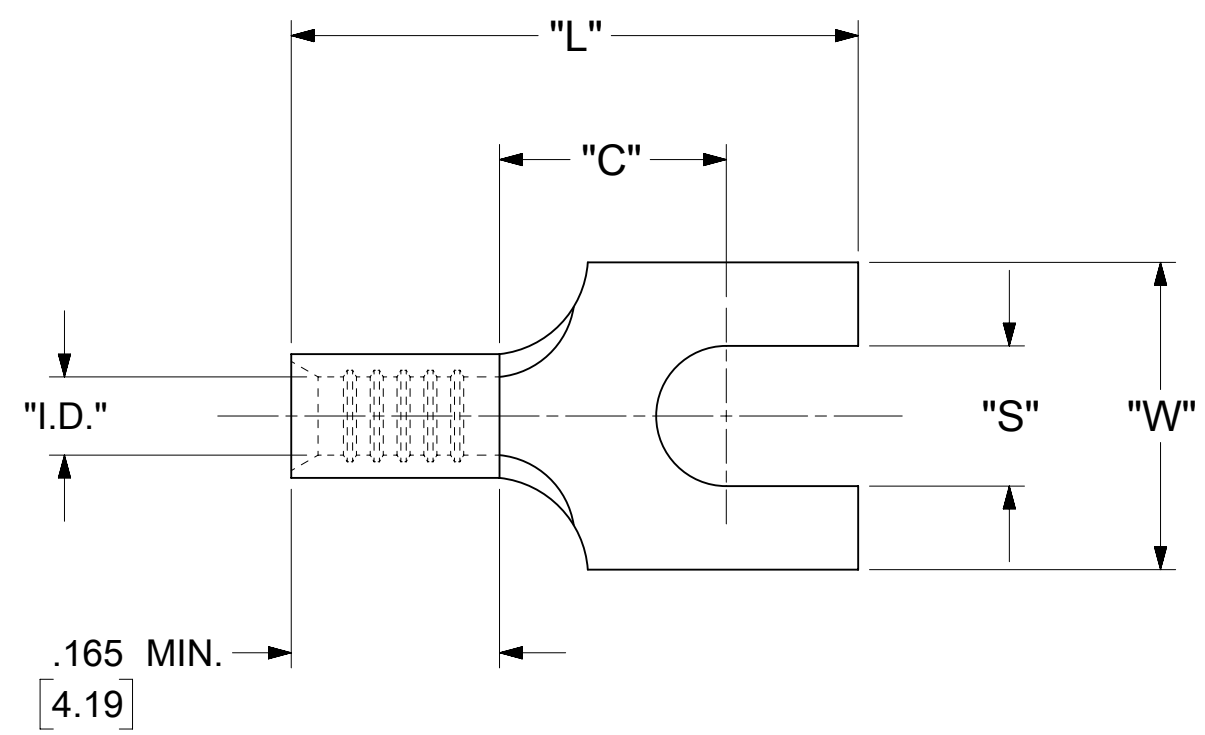


LOOSE PIECE		TAPE MOUNTED		SPECIFICATIONS							
MATERIAL NUMBER	ENGINEERING NUMBER	MATERIAL NUMBER	ENGINEERING NUMBER	STUD SIZE	"S" ±.005 [0.13]	"W" ±.010 [0.25]	"C" MIN.	"L" MAX.	"I.D." MIN.	"H"	STOCK THICKNESS
191290055	AA-1109-02	191290054	AA-1109-02T	2	.094 [2.39]	.187 [4.75]	.183 [4.65]	.502 [12.75]	.054 [1.37]	1.155 [29.34]	.031±.001 [0.79]
191290053	AA-1109-04	191290052	AA-1109-04T	4	.119 [3.02]						



PARTS ON TAPE

NOTES:

- MATERIAL: COPPER  
PLATING: ELECTRO-TIN (.0003 MIN).
- WIRE SIZE: 22 - 18 AWG  
.25 - 1.5 MM<sup>2</sup>
- "UL" LISTING #E32244  
"CSA" LISTING #18689
- ALL DIMENSIONS IN INCHES/[MM].
- PARTS ARE ROHS COMPLIANT.
- DIMS. SHOWN ARE FOR REFERENCE ONLY.

THIS DRAWING CONTAINS INFORMATION THAT IS PROPRIETARY TO MOLEX ELECTRONIC TECHNOLOGIES, LLC AND SHOULD NOT BE USED WITHOUT WRITTEN PERMISSION									
DIMENSION UNITS		SCALE		CURRENT REV DESC: OBSOLETE PART NUMBER					
INCH/MM		NTS							
GENERAL TOLERANCES (UNLESS SPECIFIED)				EC NO: 651926		2020/11/23		PRODUCT CUSTOMER DRAWING	
				DRWN: ABHISP1					
4 PLACES		±		2020/12/29		DOCUMENT NUMBER		DOC TYPE   DOC PART   REVISION	
3 PLACES		± 0.005		CHK'D: GGA		AACD10302		PSD   001   A1	
2 PLACES		± 0.13   ± 0.01		APPR: GGA		1984/10/17			
1 PLACE		± 0.25   ±		INITIAL REVISION:					
0 PLACES		±		DRWN: JJ					
ANGULAR TOL		± 0.5 °		APPR:					
DRAFT WHERE APPLICABLE MUST REMAIN WITHIN DIMENSIONS				THIRD ANGLE PROJECTION		DRAWING		SHEET NUMBER	
						C-SIZE		19129	
MATERIAL NUMBER		CUSTOMER		SEE TABLE		GENERAL MARKET		1 OF 1	