

S285-13 Coolant Level Switch

Document ref.: DDS_S285-13

25-Jan-21

Rev. 1

The S285 capacitance type coolant level switch is an active device designed to give an alarm signal if liquid falls below, or rises above, a preset level.

It can be specified with a delay to eliminate false alarms due to turbulence. Containing a factory programmable microprocessor, the switch offers sink to ground or source voltage output.

The switch is designed to operate in both earthed metal and isolated plastic tanks. For high accuracy the S285 is ideally mounted horizontally at the point where an alarm or control signal is required.

| | |
|--------------------|---------------------------------------|
| Part | S285-13 |
| Description | 1/4" NPTF, PU 1 LIQ, SI 10 FA, SI LIQ |
| Prod. Group | Coolant Level Switch |
| Technology | Capacitance |
| Liquid | Water based Coolant |
| Output Type | Sink (Open collector) |
| Connector | Metri-pack 150 - 4 Pins |
| Thread | 1/4" NPTF |

Performance

| | |
|--------------|--------------------|
| Output | Sink in Liquid |
| Alarm Delay | 10 s (Factory Set) |
| Power Up | in Liquid |
| Switch Sense | Level Falling |

Materials

| | |
|-------------|------------------------|
| Body | Brass |
| Probe | PTFE |
| Terminals | Brass, Tin Plated |
| Seals | EDPM, FVMQ |
| Connector | 30% Glass Filled Nylon |
| Thread Seal | Vibra-Seal 516 |

Ratings

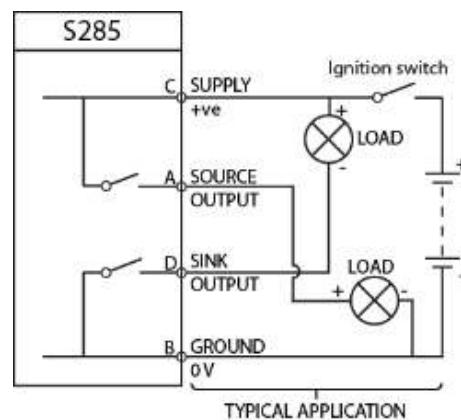
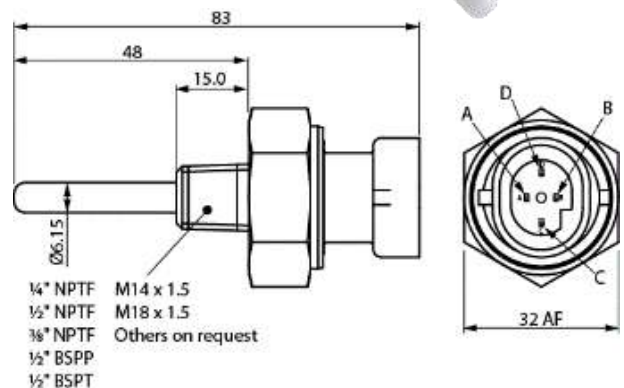
| | |
|-------------|----------------|
| Sealing | IP67 |
| Pressure | 5 Bar (max) |
| Drop | 1M to concrete |
| Vibration | 15.3 Grms |
| Temperature | -40 to +125 C |
| EMC | ISO13766:2006 |

Electricals

| | |
|----------------|----------------------|
| Supply Voltage | 9-36 VDC |
| Supply Current | 7 mA + source output |

Harness Information

| | |
|---------------------|------------|
| Connector | M/P 150-4P |
| Source Output | Pin A |
| Sink Output | Pin D |
| +ve supply location | Pin C |
| Ground | Pin B |



NOTE: IF SINK ONLY OUTPUT IS REQUIRED THEN PIN A IS NOT USED.