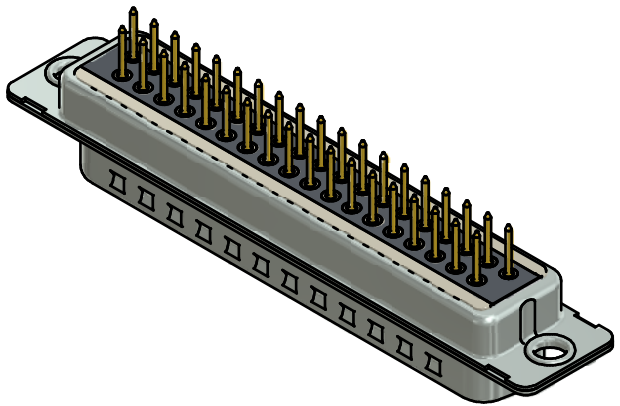
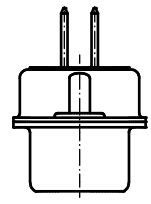
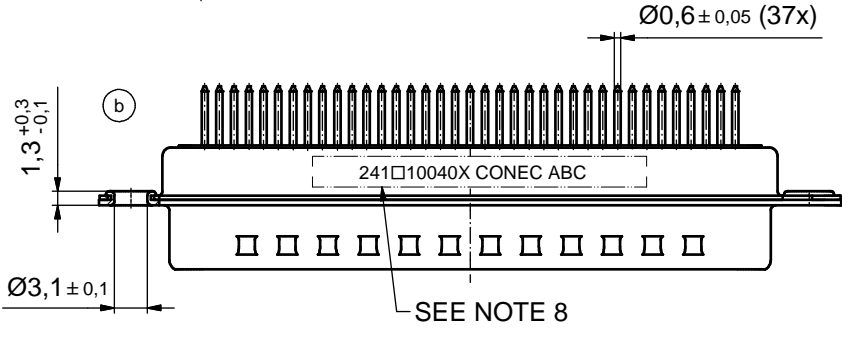
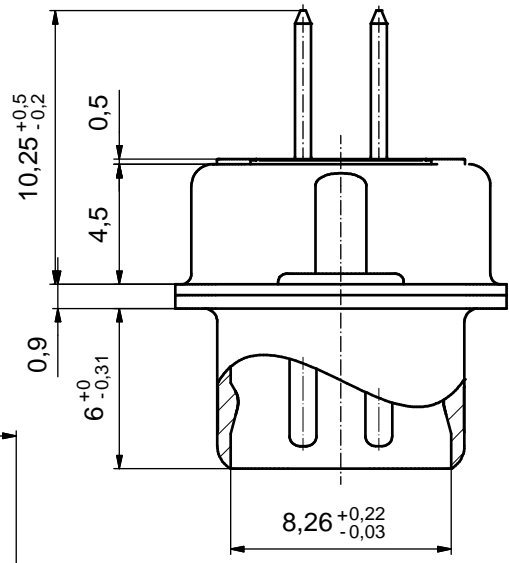
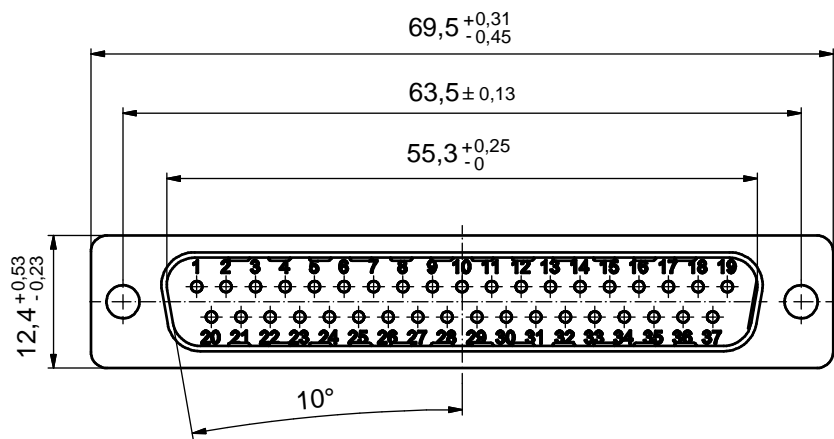


6 5 4 3 2 1

(5:1)



NOTES: (b)

1. FOR WAVESOLDERING (SOLDER BATH TEMPERATURE 260°C FOR 5 SEC. AND SOLDER PREHEAT 100°C FOR 30 SEC.)
2. METALSHELLS: STEEL; min. 315µm TIN over 40-80µm NICKEL
3. INSULATOR: HIGH TEMPERATURE PLASTIC UL 94 V-0; BLACK
4. CONTACTS: COPPER ALLOY; PLATING (SEE PART NO.):
 - PLEASE ADD C for 30µm HARD GOLD over min. 50µm NICKEL
 - PLEASE ADD B for 20µm HARD GOLD over min. 50µm NICKEL
 - PLEASE ADD A for GOLD FLASH over NICKEL (PREFERRED TYPE)
5. CAPACITANCE: 370pF ± 20%
6. DIELECTRIC WITHSTANDING VOLTAGE: 424 VDC
7. P.C.B. HOLE DRILLINGS ON SHEET 2
8. CONNECTOR IS PART MARKED: 241□10040X CONEC ABC (see note 4)

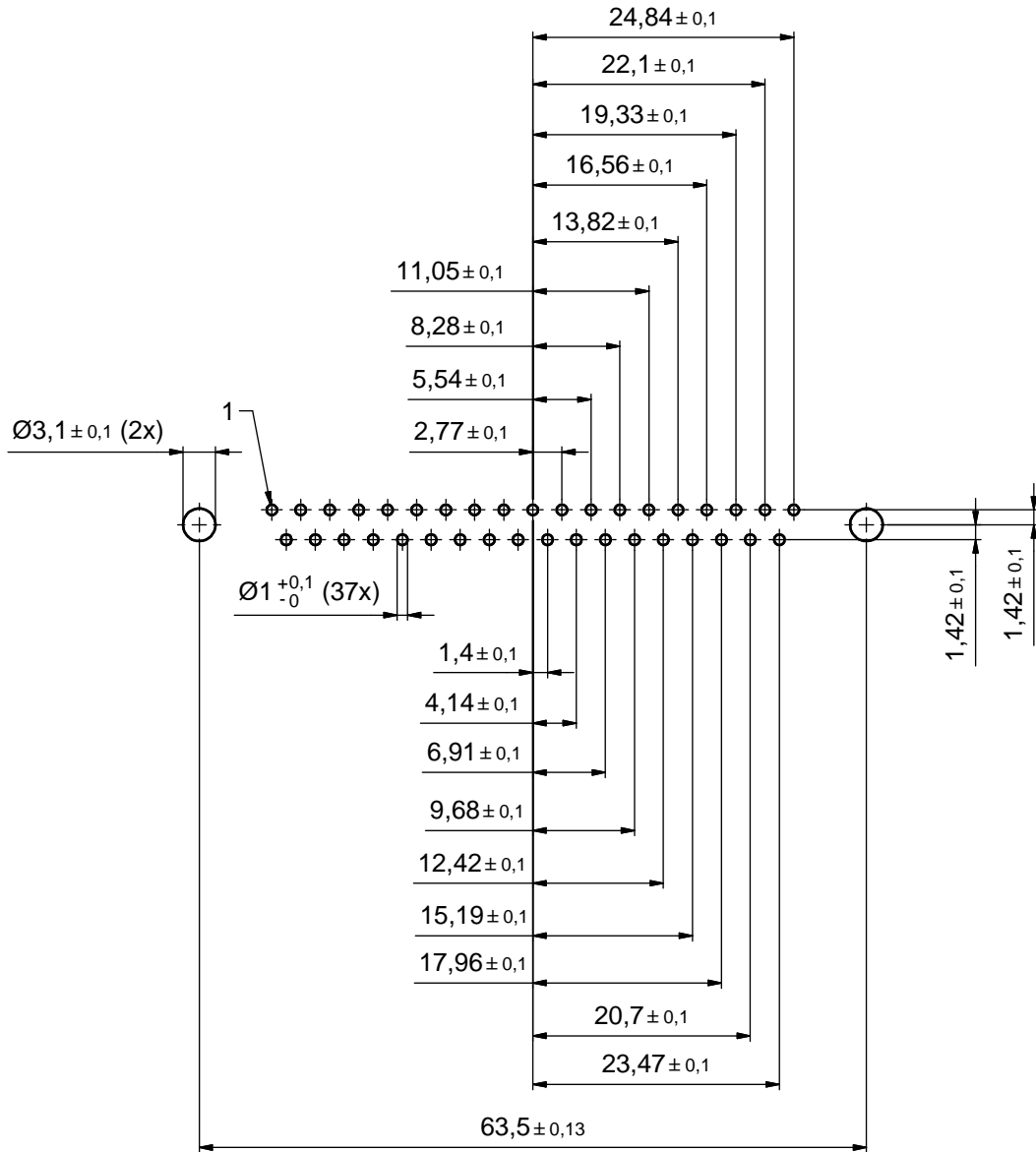
Directive 2002/95/EC RoHS compliant

THIS DRAWING MAY NOT BE COPIED OR REPRODUCED IN ANY WAY, AND MAY NOT BE PASSED ON TO A THIRD PARTY WITHOUT WRITTEN PERMISSION. OWNERSHIP AND COPYRIGHT OF CONEC GmbH DO NOT ALTER CAD DRAWING BY HAND	tolerance		dim. in mm	scale: 2:1 (5:1)		
	date			material: SEE NOTES		
	name		title: D-SUB C-FILTER MALE			
	drawn 07.05.2014 Heinrich		37pos. SOLDER PIN STRAIGHT			
appd. 07.05.2014 Henneboel		norm				
d-old 24K1A279/24K2A279		dwg no:		DIN-A3		
4 x b A5200 07.05.2014 Heinrich				(b) 24K1A1526		
a Original		part no: (b) 241□10040X (see note 4)		sh: 1/2		
rev. description date name						

6 5 4 3 2 1

P.C.B. HOLE DRILLINGS

(P.C.B. TOP SIDE)



THIS DRAWING MAY NOT BE COPIED OR REPRODUCED IN ANY WAY, AND MAY NOT BE PASSED ON TO A THIRD PARTY WITHOUT WRITTEN PERMISSION. OWNERSHIP AND COPYRIGHT OF CONEC GmbH DO NOT ALTER CAD DRAWING BY HAND				tolerance		scale: 2:1
				date	name	material: SEE SHEET 2
				drawn 07.05.2014	Heinrich	title: P.C.B. HOLE DRILLINGS D-SUB C-FILTER MALE 37pos. SOLDER PIN
				appd. 07.05.2014	Henneboel	
				norm		
				d-old		dwg no:
	a	Original		CONEC [®]		
rev.	description	date	name			