



915-920 MHz Cavity Bandpass Filter

Part Number: AB917B783

ANATECH ELECTRONICS INC
RF & Microwave Filters & Products



Electrical specifications

Passband: 915-920 MHz
Insertion loss(CF): 3 dB max
1.5 dB Bandwidth: 5 MHz max
Return loss: ≥ 16 dB
Out of band rejection 1: 75 dB@860-899 MHz
Out of band rejection 2: 75 dB@934-960 MHz
Power Handling: 20 Watts

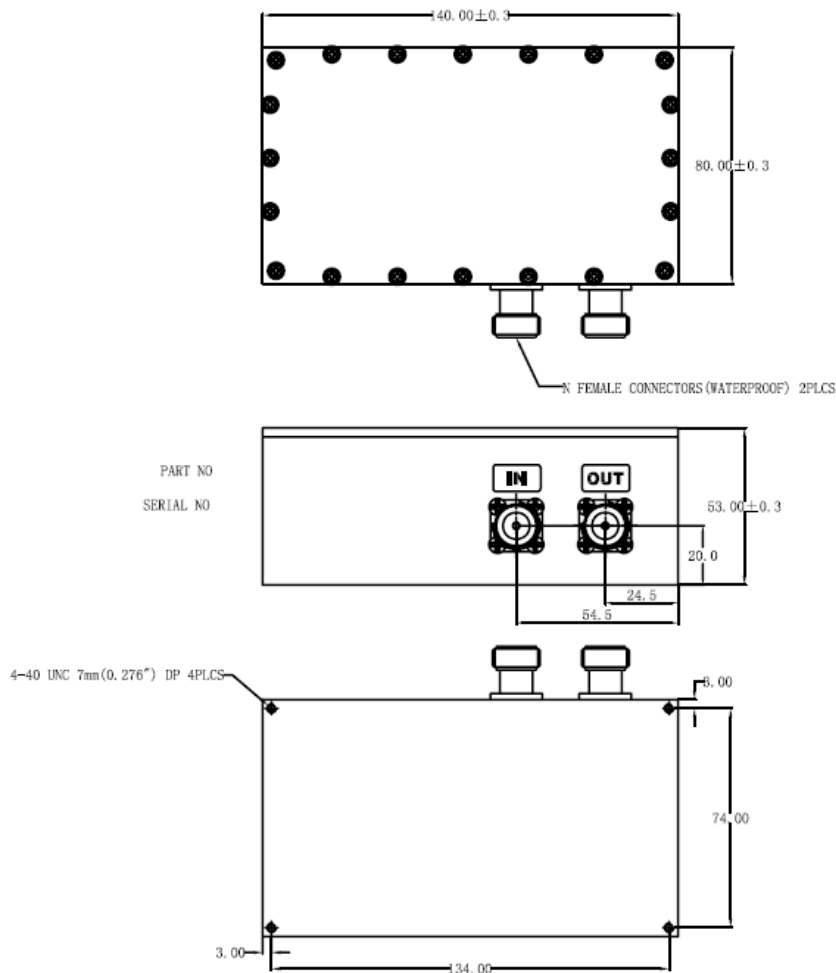
Mechanical

Mounting Method: Threaded Mounting Holes
Connector Type: N Female
Dimensions: 140 X 80 X 53 mm

Environmental

Operating Temperature: -45 to +85° C
Storage Temperature: -55 to +95° C
Shock: 20 G. 11ms
Vibration: 20 G. 5 to 200 MHz

Outline Drawing:





Plot:

