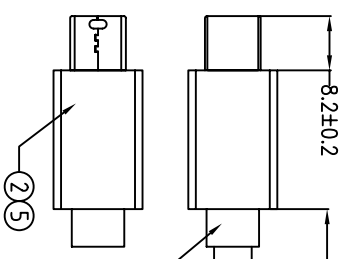
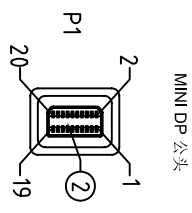
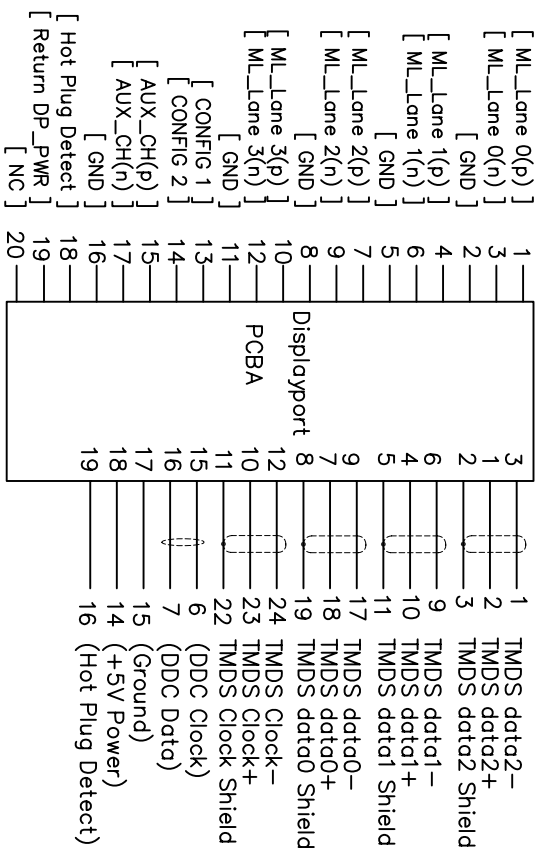
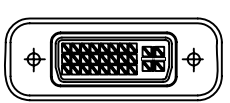
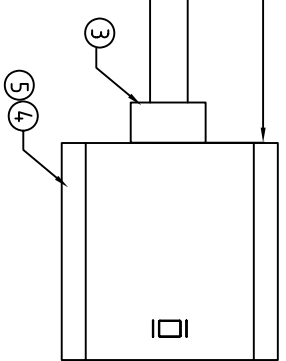


CUSTOMER APPROVED:

DATE:



1. Wiring Diagram.



SHELL _____ SHELL

5	PE	PE INSERMOLDING	10g	
4	CONN	DVI24+5 FEMALE INSULATION WHITE NICKREL PIN G/F W/WHITE COVER W/PCB+IC(NXP3361)	1SET	P2
3	PVC	45P PVC WHITE OVERMOLD	30g	
2	CONN	MINIDP20 MALE INSULATION WHITE NICKREL PIN G/F W/WHITE HODD	1SET	P1
1	CABLE	UL20276 (32AWG*1P+DW+AL/MY)*5+32AWG*5 C+A+D+B(16/6/0.1AAM) ODS.5 WHITE	1	2000MM
NO. PART NO.		DESCRIPTION	QTY	UNIT/REF
BILL OF MATERIAL				

A	2015/04	INITIAL RELEASE	REV ECN#	DATE
Cnc Tech,LLC				
DRAWN: EDWIN LAI		DATE: 04/14/15	CUSTOMER P/N:	
CHECKED:		CUSTOMER:	DWN NO: 743-50011-00200	
APPROVAL:		SHEET 1 OF 1	REV A	
TITLE: MINI DP/M T0 DVI24+5/F		DATE: 2015/04/14		

