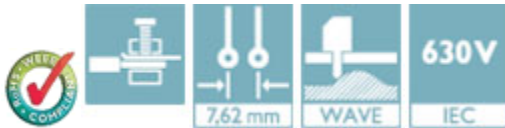


Printed-circuit board connector - GMSTBA 2,5 HC/ 2-G-7,62-LR - 1812869

Please be informed that the data shown in this PDF Document is generated from our Online Catalog. Please find the complete data in the user's documentation. Our General Terms of Use for Downloads are valid (<http://phoenixcontact.com/download>)

Header, Nominal current: 16 A, Rated voltage (III/2): 630 V, Number of positions: 2, Pitch: 7.62 mm, Connection method: Screw connection with tension sleeve, Color: green, Contact surface: Tin, Mounting: Wave soldering



Key Commercial Data

| | |
|------------------------|----------|
| Packing unit | 1 pc |
| Minimum order quantity | 50 pc |
| Custom tariff number | 85366990 |
| Country of origin | Germany |

Technical data

Dimensions

| | |
|-----------------------|----------|
| Length | 12 mm |
| Pitch | 7.62 mm |
| Dimension a | 7.62 mm |
| Constructional height | 8.6 mm |
| Pin dimensions | 1 x 1 mm |
| Hole diameter | 1.4 mm |

General

| | |
|-----------------------------|------------------------|
| Range of articles | GMSTBA 2,5 HC/...-G-LR |
| Insulating material group | I |
| Rated surge voltage (III/3) | 6 kV |
| Rated surge voltage (III/2) | 6 kV |
| Rated surge voltage (II/2) | 6 kV |
| Rated voltage (III/3) | 500 V |
| Rated voltage (III/2) | 630 V |

Printed-circuit board connector - GMSTBA 2,5 HC/ 2-G-7,62-LR - 1812869

Technical data

General

| | |
|--|--------|
| Rated voltage (U/2) | 1000 V |
| Connection in acc. with standard | EN-VDE |
| Nominal current I _N | 16 A |
| Maximum load current | 16 A |
| Insulating material | PA |
| Flammability rating according to UL 94 | V0 |
| Color | green |
| Number of positions | 2 |

Standards and Regulations

| | |
|--|--------|
| Connection in acc. with standard | EN-VDE |
| | CUL |
| Flammability rating according to UL 94 | V0 |

Classifications

eCl@ss

| | |
|------------|----------|
| eCl@ss 4.0 | 272607xx |
| eCl@ss 4.1 | 27260701 |
| eCl@ss 5.0 | 27260701 |
| eCl@ss 5.1 | 27141190 |
| eCl@ss 6.0 | 27260704 |
| eCl@ss 7.0 | 27440402 |
| eCl@ss 8.0 | 27440402 |
| eCl@ss 9.0 | 27440402 |

ETIM

| | |
|----------|----------|
| ETIM 3.0 | EC001121 |
| ETIM 4.0 | EC002637 |
| ETIM 5.0 | EC002637 |

UNSPSC

| | |
|---------------|----------|
| UNSPSC 6.01 | 30211810 |
| UNSPSC 7.0901 | 39121409 |
| UNSPSC 11 | 39121409 |
| UNSPSC 12.01 | 39121409 |
| UNSPSC 13.2 | 39121409 |

Printed-circuit board connector - GMSTBA 2,5 HC/ 2-G-7,62-LR - 1812869

Approvals

Approvals


Approvals


UL Recognized / cUL Recognized / EAC / cULus Recognized

Ex Approvals

Approvals submitted

Approval details

| | | |
|--|--------|-------|
| UL Recognized  | | |
| | B | D |
| Nominal current I _N | 18.5 A | 10 A |
| Nominal voltage U _N | 300 V | 300 V |

| | | |
|--|--------|-------|
| cUL Recognized  | | |
| | B | D |
| Nominal current I _N | 18.5 A | 10 A |
| Nominal voltage U _N | 300 V | 300 V |

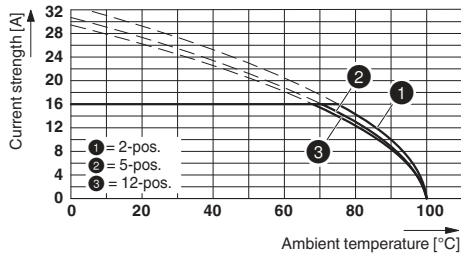
| |
|-----|
| EAC |
|-----|

| |
|--|
| cULus Recognized  |
|--|

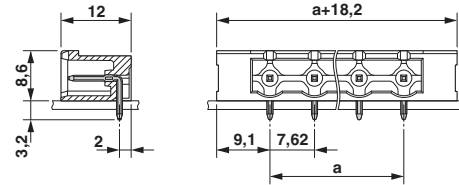
Drawings

Printed-circuit board connector - GMSTBA 2,5 HC/ 2-G-7,62-LR - 1812869

Diagram



Dimensional drawing



Derating curve for: GMSTB 2,5 HCV/...-ST-7,62 with GMSTBA 2,5 HC/...-G-7,62

Drilling diagram

