

6

5

4

3

2

**INCH**  
**MM**

**THIRD ANGLE**  
**PROJECTION**

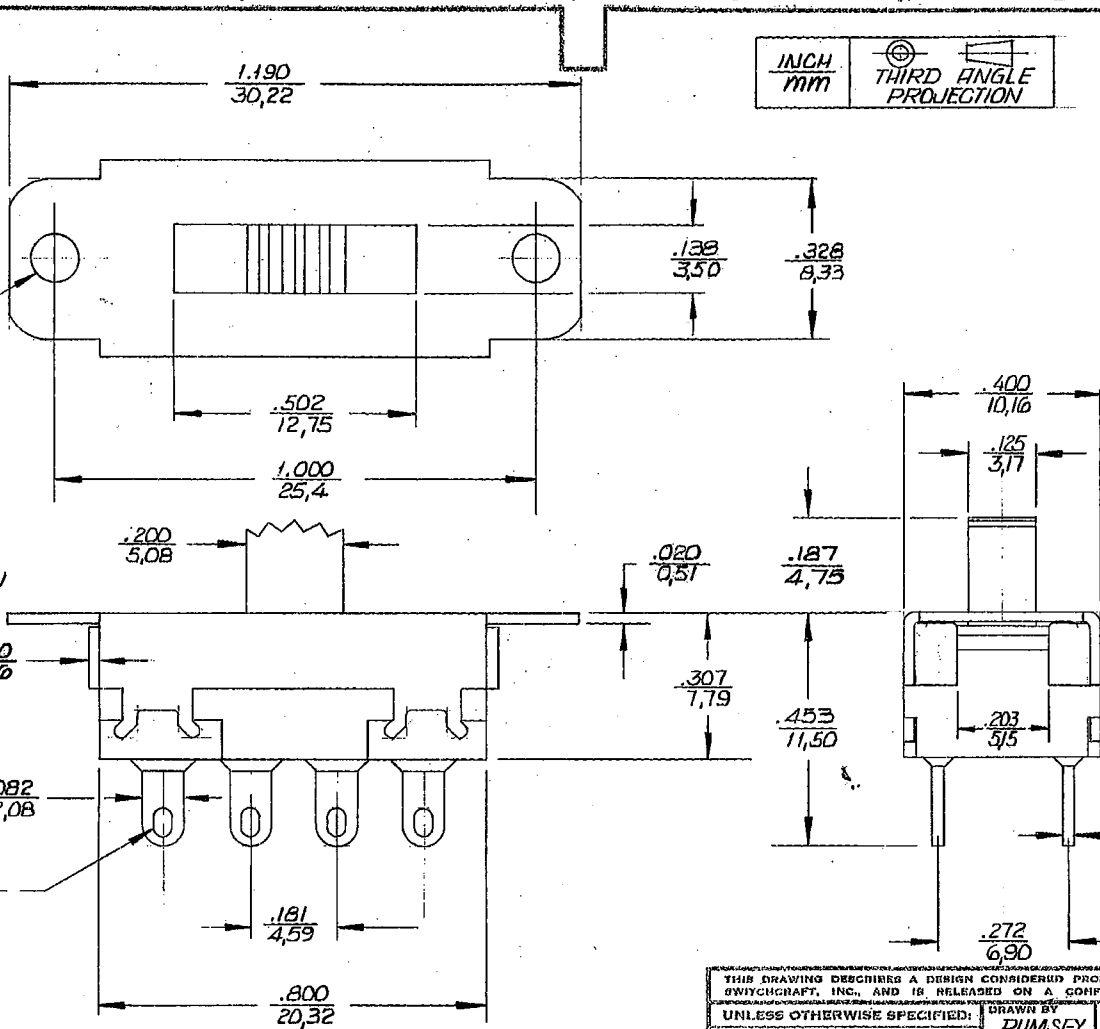
ISS	ZONE	REV	BY	DATE
A		ECO 26256	RK	7/17/77

.100 DIA.  
2.54  $\phi$

.150  
3.81

THROW  
EITHER DIRECTION

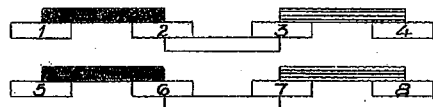
SLOT .070 X .036  
1.79 X 0.91



**NOTES:**

- ELECTRICAL RATING:  
0.5 AMP 125 VAC/DC
- MATERIALS AND FINISHES:  
HOUSING- STEEL - ZINC PLATED  
BUTTON & BOARD- THERMOPLASTIC  
TERMINALS - COPPER ALLOY  
SILVER PLATED  
CONTACT SLIDERS - BI-METAL  
SILVER ON COPPER ALLOY  
DUST SHIM - THERMOPLASTIC
- THIS PRODUCT IS RoHS COMPLIANT.

CUSTOMER DRAWING



SCHEMATIC

THIS DRAWING DESCRIBES A DESIGN CONSIDERED PROPRIETARY IN NATURE, DEVELOPED AND MANUFACTURED BY SWITCHCRAFT, INC., AND IS RELEASED ON A CONFIDENTIAL BASIS FOR IDENTIFICATION PURPOSE ONLY.

UNLESS OTHERWISE SPECIFIED:

1- DECIMAL DIMENSIONS <del>IN INCHES</del>	DRAWN BY <b>RUMSEY</b>	DATE <b>11-5-74</b>	FINISH
2- FRACTIONAL DIMENSIONS <del>IN INCHES</del>	CHECKED BY <b>RK</b>	DATE <b>9/14/18</b>	PER FINISH SPEC. NO.
3- ANGLES <del>IN DEGREES</del>	APPROVED BY <b>RK</b>	DATE <b>9/14/18</b>	MATERIAL
4- ALL DIA'S CONCENTRIC WITHIN <del>THE DRAWING</del>	SCALE <b>4:1</b>	FIRST USED ON	PER MAT. SPEC. NO.
5- ALL DIMENSIONS IN INCHES & MM	NAME <b>SLIDE SWITCH, RoHS</b>	PART NO. <b>5631342X</b>	ISSUE <b>A</b>
6- FOR THREADS USE UNIFIED PLUG AND RING GAGES ONLY.	D.P.T.T. LOCKING	SHEET <b>1</b> OF <b>1</b>	
7- REMOVE ALL BURRS.	DO NOT SCALE DRAWING		
8- PART TO BE FABRICATED AS SPECIFIED. MAKE NO DIMENSIONAL ALLOWANCES FOR APPLIED FINISHES, I.E., PLATING, PAINTING, ETC.			