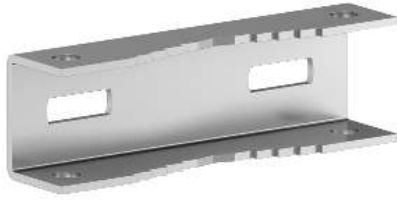


# Product data sheet

Specifications



Post fixing device WM Spacial, length 150. For post max 675. Max. Load: 100kg.

NSYSFPSC15

⚠ To be discontinued on: 31 August 2023

⚠ To be discontinued

## Main

Range	Spacial
Accessory / separate part category	Fixing accessory
Product or component type	Post fixing device
Device application	Multi-purpose
Enclosure nominal dimensions	-
Mounting location	Rear of enclosure
Range compatibility	Spacial (Spacial SBM)
Device composition	fixing elements 2 support rail 2 strip
Quantity per set	Set of 1

## Complementary

Material	Galvanised steel
Fixing mode	By fixing element - screw type M8 - to the inserts in the rear of the enclosure location Minimum diameter 150 mm Maximum diameter 215 mm
Permanent permissible load	100 kg
Height	45 mm
Width	145 mm
Depth	32.5 mm
Product weight	0.86 kg

## Packing Units

Unit Type of Package 1	PCE
Number of Units in Package 1	1
Package 1 Height	25.0 cm
Package 1 Width	15.0 cm
Package 1 Length	6.5 cm
Package 1 Weight	860.0 g

## Offer Sustainability

REACH Regulation	<a href="#">REACH Declaration</a>
REACH free of SVHC	Yes
EU RoHS Directive	Pro-active compliance (Product out of EU RoHS legal scope) <a href="#">EU RoHS Declaration</a>
Toxic heavy metal free	Yes
Mercury free	Yes
China RoHS Regulation	<a href="#">China RoHS declaration</a> Pro-active China RoHS declaration (out of China RoHS legal scope)
RoHS exemption information	Yes

## Recommended replacement(s)

NSYSFPSC15 is replaced by:

1x



Post fixing device WM Spacial, length 300. For post max 675. Max. Load:100kg.  
NSYSFPSC30