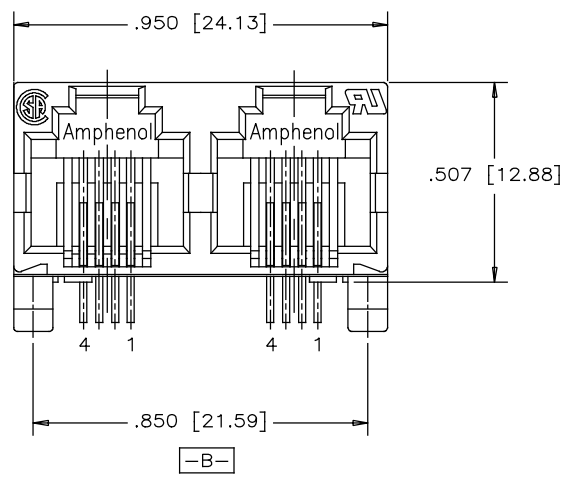
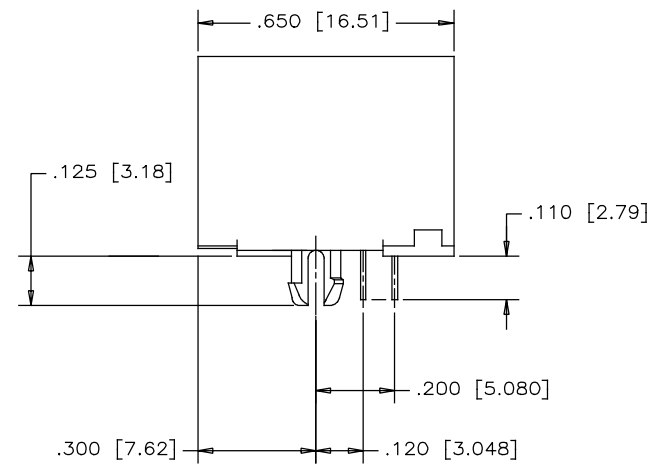


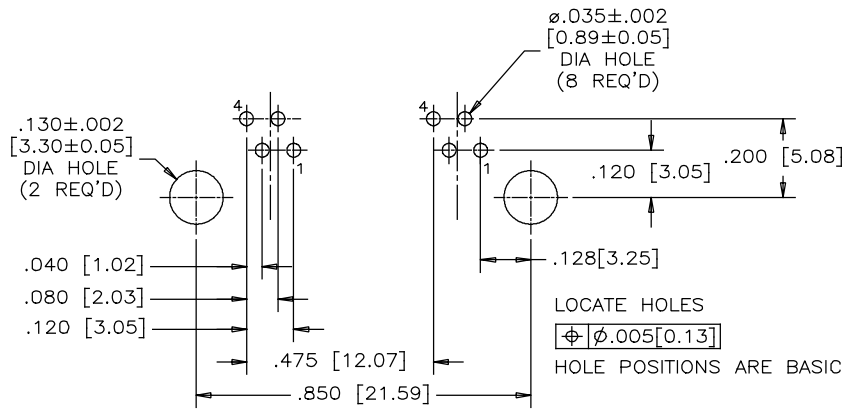
REVISIONS			
REV	DESCRIPTION, ECN, EAR NO.	DATE	APP'D
A	PROPOSAL	JUN07/17	L.CHAN



FRONT VIEW



SIDE VIEW



RECOMMENDED P.C.B. LAYOUT
(COMPONENT SIDE OF BOARD)

MATERIALS:

- PLASTIC HOUSING: HIGH TEMPERATURE THERMOPLASTIC
UL FLAMMABILITY RATING 94V-0.
- CONTACTS: PHOSPHOR BRONZE
- CONTACT PLATING: GOLD PLATED ON MATING SURFACES
REFER TO PART NUMBER
50 MICROINCHES [1.27 MICRONS] MINIMUM NICKEL.
100 MICROINCHES [2.54 MICRONS] MATTE TIN ON CONTACT TAILS.
- TUBE: EXTRUDED PVC, ANTI-STATIC, TRANSPARENT.

AMPHENOL PART NUMBER: R J E 0 1 - X 4 0 - 0 2

- GOLD PLATING
- 1 = 6μ" MIN
 - G = 15 μ" MIN
 - J = 30 μ" MIN
 - 6 = 50 μ" MIN



UNLESS SPECIFIED OTHERWISE	DRAWN AMY.Z	DATE JUN07/17	Amphenol Canada Corp. www.amphenolcanada.com
PRIMARY UNITS INCH	CHECKED L.CHAN	JUN07/17	
SECONDARY MILLIMETER	M.E. APP'D		TITLE
REFERENCE IN PARENTHESES	Q.A. APP'D		RJE01 SERIES HIGH SPEED MODULAR JACK, 2 PORT, 6 POSITIONS, 4 CONTACTS, WITHOUT SHIELD - RoHS COMPLIANT
GENERAL TOLERANCES	DWG APPR.		DWG. NO.
1 DECIMAL PLACE ±0.025	ENG. REL. NO.		P-RJE01-X40-02
2 DECIMAL PLACES ±0.020	REF. EAR# RJ17113		REV
3 DECIMAL PLACES ±0.015	THIRD ANGLE PROJECTION		A
ANGULAR DEGREES ±1.0°	DO NOT SCALE DRAWING		CODE ID NO. 03554 DWG SIZE: C SCALE: N/A SHEET 1 OF 1