

Pitch 3.0mm (0.12") 64×32 Pixel
Indoor Full Color LED Module
Technical Data Sheet

Model No.: MI-T21P3RGBE-AB

Features:

- ◇ Pitch 3mm (0.12") indoor LED module.
- ◇ 64×32 pixel dot matrix.
- ◇ High luminous intensity output.
- ◇ 2121RGB SMD assembly.
- ◇ Well defined spatial radiation.
- ◇ Wide viewing angle (2θ1/2): ≥120°.
- ◇ Low power consumption.
- ◇ Reliable and robust.
- ◇ Solder state reliability.
- ◇ Emitting color: Red.
- ◇ The product itself will remain within RoHS compliant Version.

Descriptions:

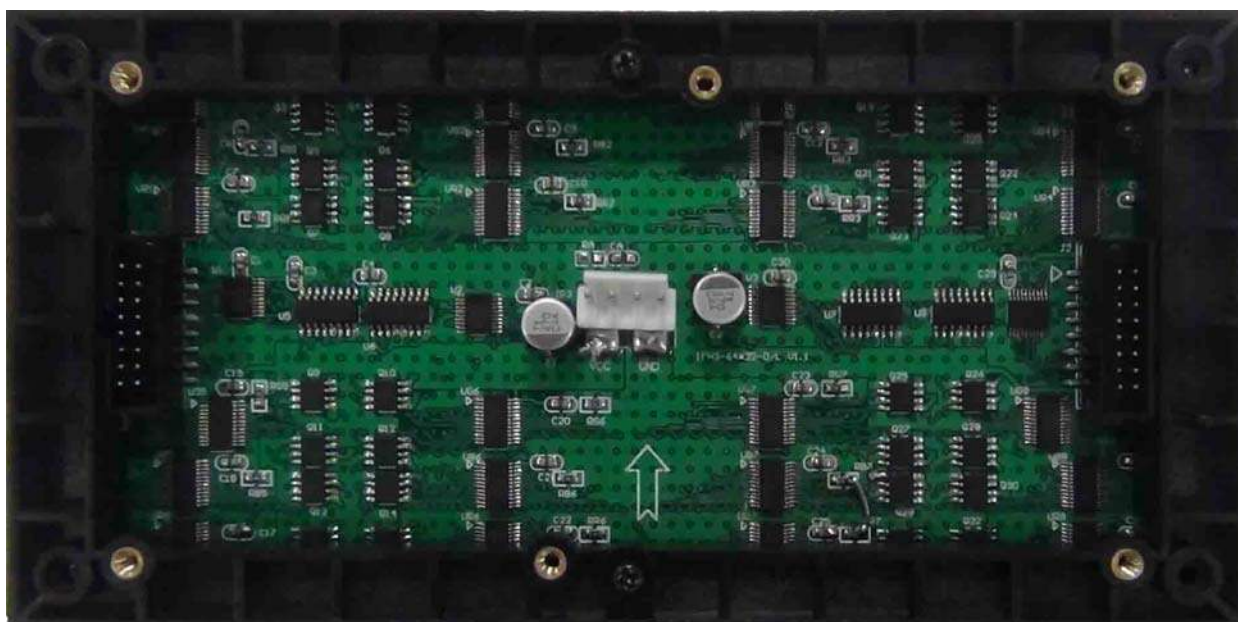
- ◇ The series are 64×32 pixel 2121RGB SMD LED display.
- ◇ The indoor LED module provide excellent reliability in bright ambient light.
- ◇ The indoor LED module with LED dot matrix displays are assembled in the epoxy and plastic package.

Applications:

- ◇ Single graphic signs.
- ◇ Message boards.
- ◇ Variable message signs (VMS).
- ◇ Commercial indoor advertising, etc.

Package Dimension:

Front view and negative map



Main Specifications:

ITEM	Description
Pixel Pitch (mm)	3
One Pixel	1R1G1B
Density of Pixel (dots/m ²)	111 · 111
Drive Method	1/16 scan Constant current
Driver IC	MBI 5024
Brightness in White Color (cd/m ²)	1100~1300
Gray scale	14bit
Color Quantity	≥68.7billion
Frame frequency	≥60HZ/S
Refresh frequency	≥1000HZ/S
Brightness adjust way	Manual R.G.B each color 256,are levele,automatic 8 grades are adjustable
Viewing Distance	≥4m
Viewing angle (hor/vert)	160°/160°
Protection against water and dust	IP50 front/IP4X rear
Life span	> 100000 hours
Display resolution/Module(dots)	64x32=2048dots
Module Size (mm)	192x96
Cabinet size (W/H) (mm)	576x576x80
Weight with cabinet (kg)	≤10 40kg/m ³
Cabinet resolution (W/H) (dot)	192x192
Working temperature	-10°C ~ +40°C
Working voltage	220/110VAC, 50/60Hz
Max.power consumption (W/ m ²)	≤1200
Control system transmission	DVI display card + main controller + fibre transmission or Rj45 (optional)
Video signal	S-VHS,DVD,TV,Satellite,Color-camera,PC-VG
Adopted spare parts	Leds, IC, cables etc.
Certificates	CE,ROHS,CCC
Software	Led studio/LEDT9 software is free
Interface Definition	HUB75D

LED Optical Characteristics (Ta=25°C):

Item	Symbol	Description		Unit	Test Condition
Luminous Intensity	IV	R	80~120MCD	mcd	20MA
		G	200~220MCD		10MA
		B	45~65MCD		5MA
Peak Emission Wavelength	λ_p	R	620~630		nm
		G	520~525		
		B	465~470		
Viewing Angle	120		Degree		