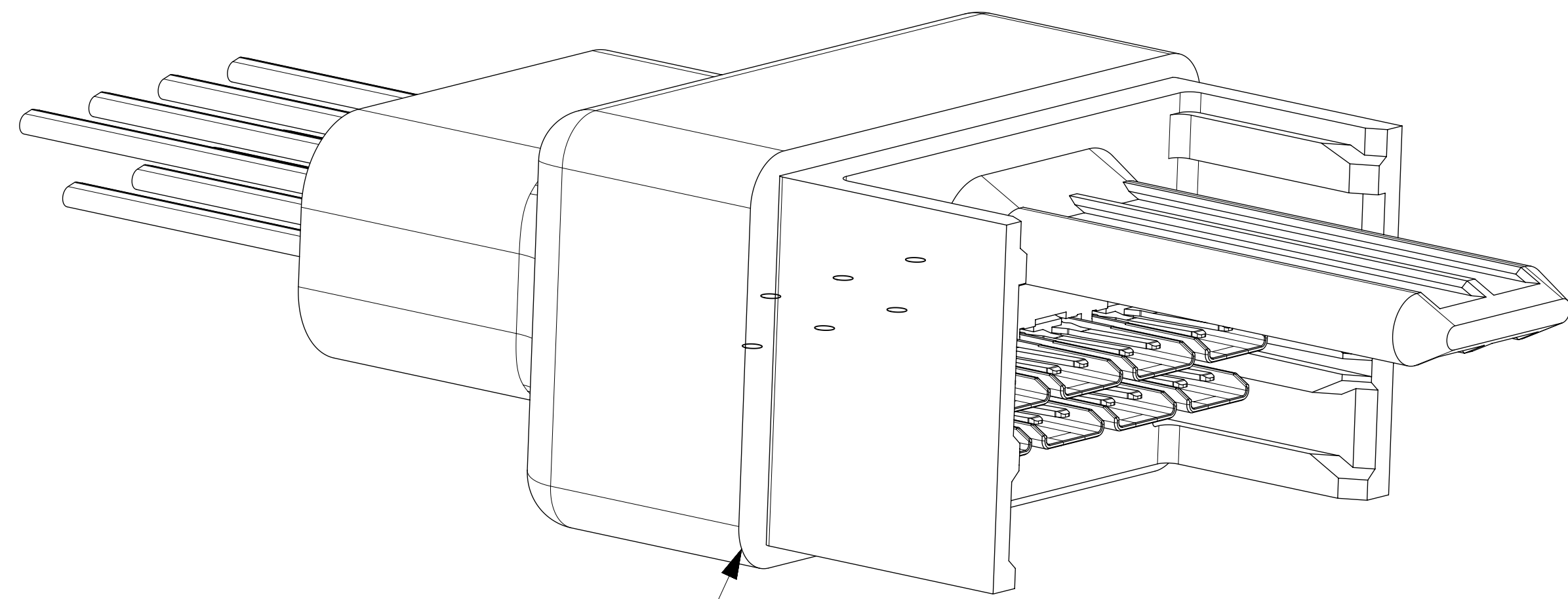


COLUMN	
P1	P2
A1	A2
B1	B2
C1	C2
D1	D2
E1	G2
F1	H2
G1	E2
H1	F2
A2	A1
B2	B1
C2	C1
D2	D1
E2	G1
F2	H1
G2	E1
H2	F1

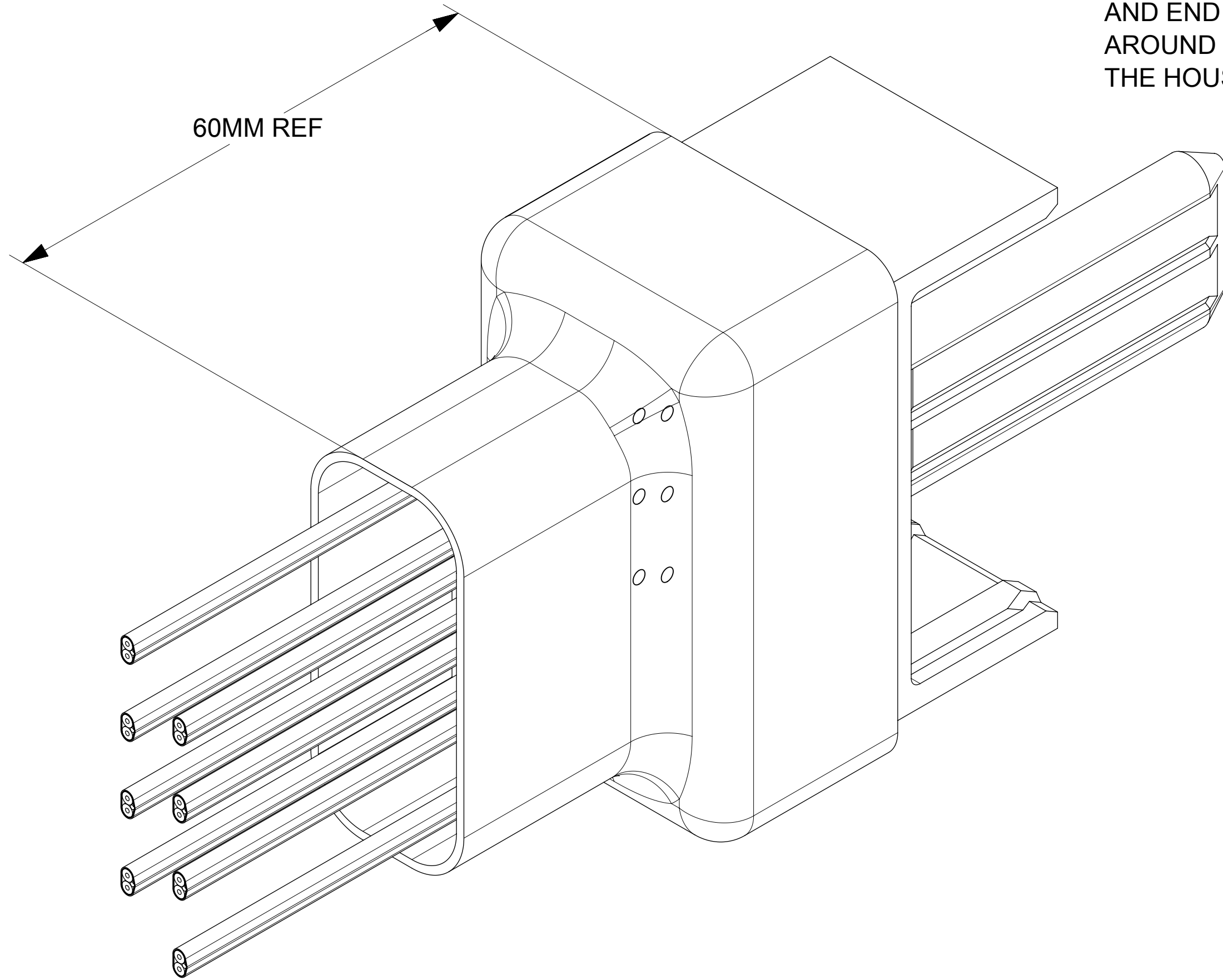
SL No.	PART #	LENGTH DIM "A"
1	2033879011	703
2	2033879031	1000
3	2033879030	1500

NOTES:
 1. CABLE: 30 AWG, 90 OHM TWINAX
 2. CONTACT MATERIAL: COPPER ALLOY
 3. CONTACT PLATING: GOLD OVER NICKEL
 4. WAFER OVERMOLDING MATERIAL: BLACK POLYCARBONATE
 5. HOUSING MATERIAL: LIQUID CRYSTAL POLYMER
 6. RoHS COMPLIANT, NO EXEMPTIONS
 7. IT IS UNDERSTOOD AND AGREED THAT NO GUARANTEE OF COMPLIANCE TO ANY CUSTOMER SPECIFICATION OR MOLEX SPECIFICATION NOT LISTED ON THIS DRAWING IS MADE OR IMPLIED.
 8. THE HEATSHRINK SHOWN IS A "REPRESENTATION" OF HOW THE ACTUAL HEAT SHRINK MAY APPEAR ON THE ACTUAL CABLE ASSEMBLIES. THE ACTUAL APPEARANCE WILL VARY.

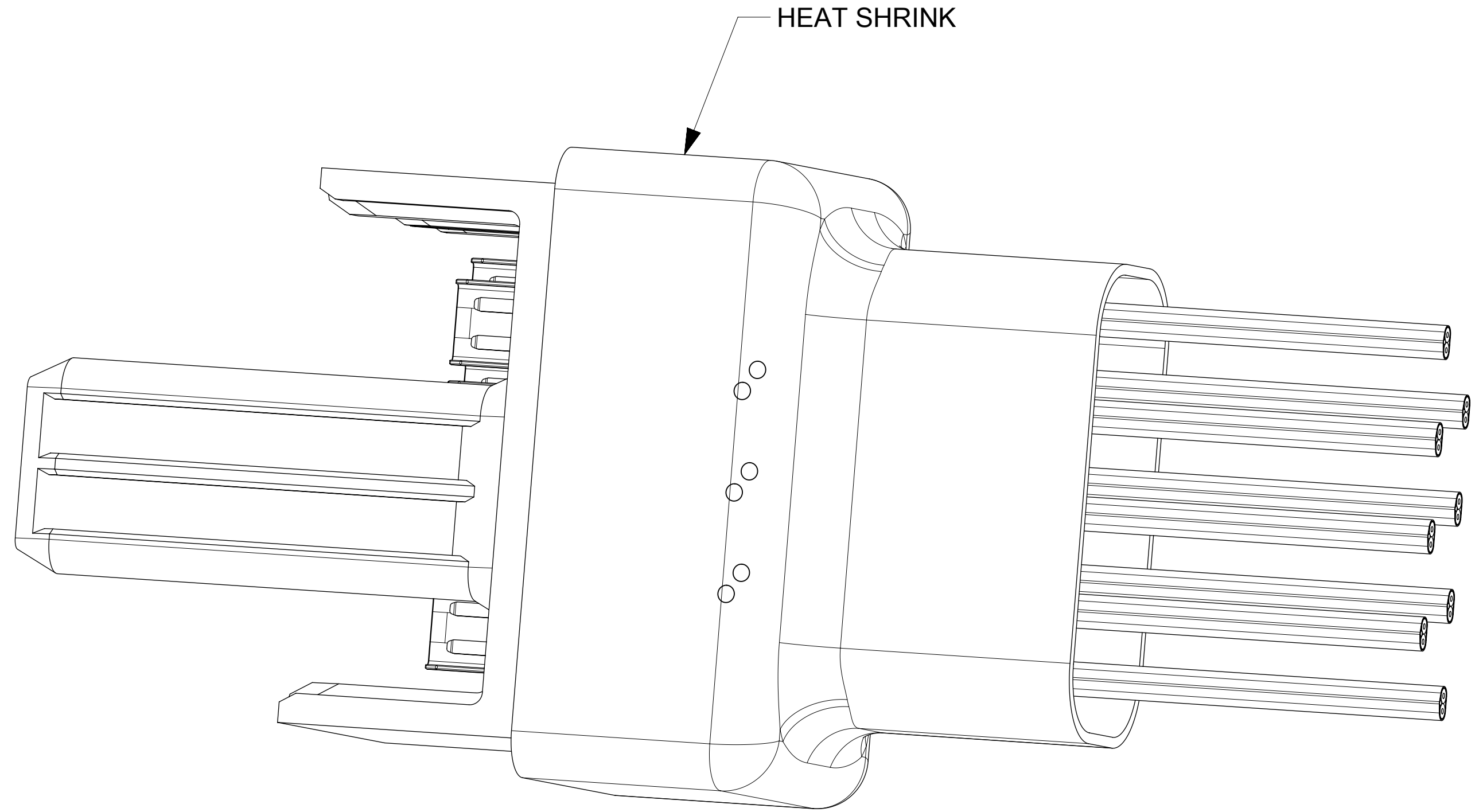
SYMBOLS	THIS DRAWING CONTAINS INFORMATION THAT IS PROPRIETARY TO MOLEX ELECTRONIC TECHNOLOGIES, LLC AND SHOULD NOT BE USED WITHOUT WRITTEN PERMISSION				
	DIMENSION UNITS	SCALE			
▽ = 0	mm	10:1	EC NO: 611731		
▽ = 0	GENERAL TOLERANCES (UNLESS SPECIFIED)		DRWN: ABN 2018/12/20		
▽ = 0	ANGULAR TOL	± 0.5°	CHK'D: ABN 2019/02/08		
▽ = 0	4 PLACES	±	APPR: KJANOTA 2019/02/08		
▽ = 0	3 PLACES	±	INITIAL REVISION:		
▽ = 0	2 PLACES	± 0.13	DRWN: NSRIVATSAHS 2017/10/13		
▽ = 0	1 PLACE	± 0.25	APPR: CHIRSCHY 2018/06/28		
▽ = 0	0 PLACES	±	DRAFT WHERE APPLICABLE MUST REMAIN WITHIN DIMENSIONS		
▽ = 0	THIRD ANGLE PROJECTION		DRAWING SERIES		
▽ = 0	D-DRAWING		D-SIZE 203387		
			MATERIAL NUMBER		CUSTOMER
			SEE TABLE		GENERAL MARKET
			DOCUMENT NUMBER		DOC TYPE DOC PART REVISION
			2033879011		PSD 000 B1
			SHEET NUMBER		1 OF 5



THERE MAY BE SOME GAP BETWEEN BACK OF HOUSING AND END OF HEAT SHRINK AROUND PERIMETER OF THE HOUSING



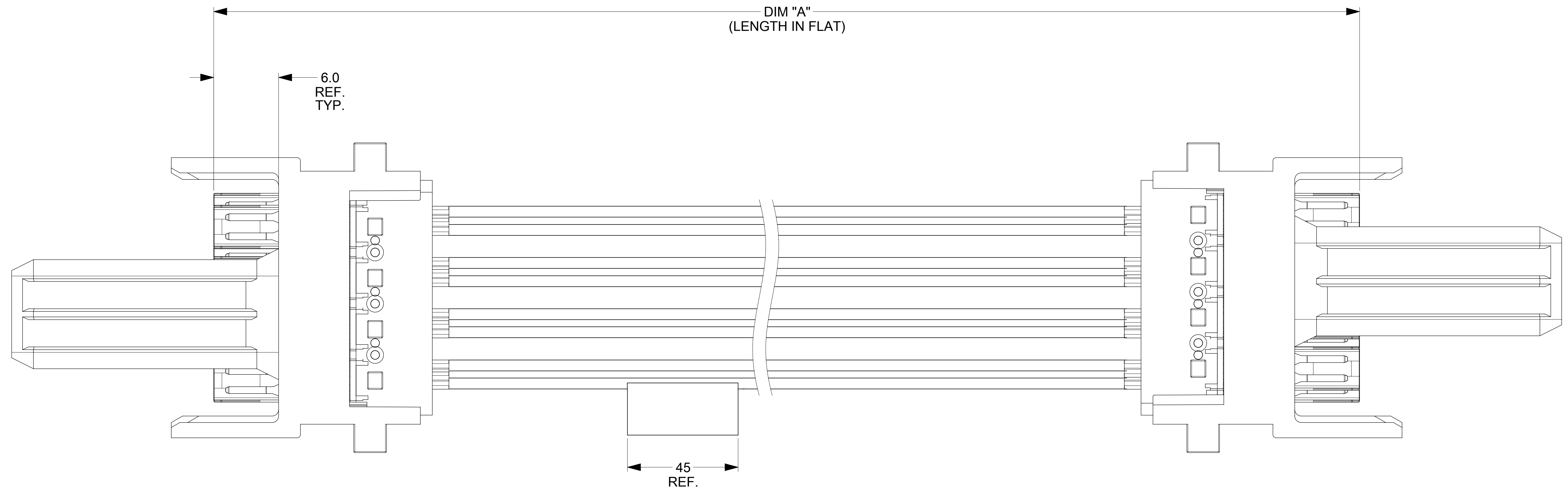
60MM REF



HEAT SHRINK

SYMBOLS	THIS DRAWING CONTAINS INFORMATION THAT IS PROPRIETARY TO MOLEX ELECTRONIC TECHNOLOGIES, LLC AND SHOULD NOT BE USED WITHOUT WRITTEN PERMISSION		
	DIMENSION UNITS	SCALE	CURRENT REV DESC: SEE REVISION TABLE
▽ = 0	mm	6:1	molex IMPEL TEST CABLE ASSY, CROSSOVER PRODUCT CUSTOMER DRAWING DOCUMENT NUMBER: 2033879011 DOC TYPE: PSD DOC PART: 000 REVISION: B1 MATERIAL NUMBER: SEE SHEET 1 CUSTOMER: GENERAL MARKET SHEET NUMBER: 2 OF 5
▽ = 0	GENERAL TOLERANCES (UNLESS SPECIFIED)		
▽ = 0	ANGULAR TOL ± 0.5°		
▽ = 0	4 PLACES ±		
▽ = 0	3 PLACES ±		
▽ = 0	2 PLACES ± 0.13		
▽ = 0	1 PLACE ± 0.25		
▽ = 0	0 PLACES ±		
☒ = 0	DRAFT WHERE APPLICABLE MUST REMAIN WITHIN DIMENSIONS		EC NO: 611731 DRWN: ABN 2018/12/20 CHK'D: ABN 2019/02/08 APPR: KJANOTA 2019/02/08 INITIAL REVISION: DRWN: NSRIVATSAHS 2017/10/13 APPR: CHIRSCHY 2018/06/28
☒ = 0	THIRD ANGLE PROJECTION	DRAWING	SERIES
			D-SIZE 203387

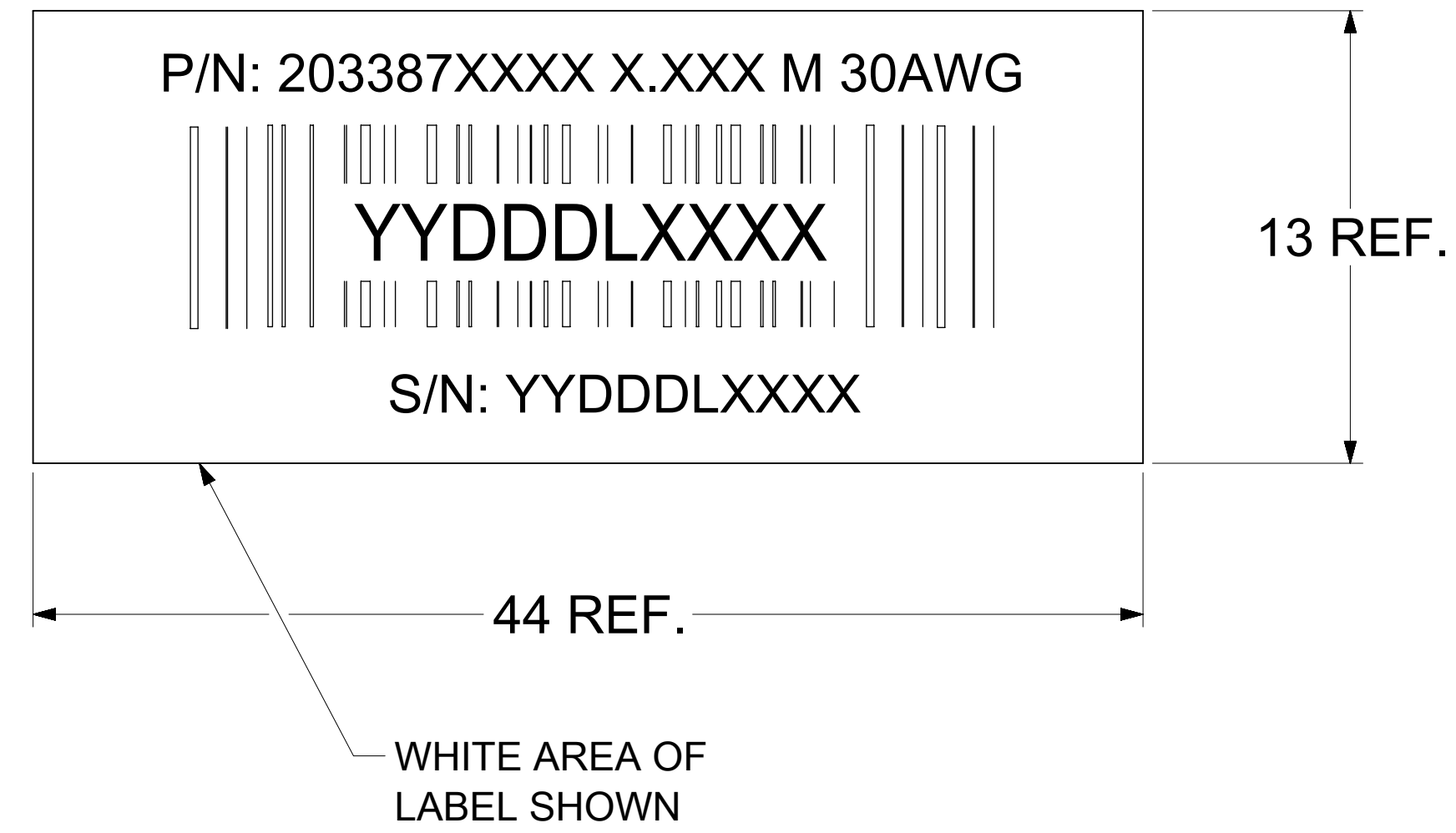
HEATSHRINK NOT SHOWN
IN THIS VIEW



LABEL TO BE WRAPPED AROUND ONE CABLE
LABEL TEXT TO BE:
PART NO. CABLE LENGTH WIRE AWG
BARCODE SERIAL NO.

SYMBOLS	THIS DRAWING CONTAINS INFORMATION THAT IS PROPRIETARY TO MOLEX ELECTRONIC TECHNOLOGIES, LLC AND SHOULD NOT BE USED WITHOUT WRITTEN PERMISSION		
	DIMENSION UNITS	SCALE	CURRENT REV DESC: SEE REVISION TABLE
▽ = 0	mm	1:1	molex IMPEL TEST CABLE ASSY, CROSSOVER PRODUCT CUSTOMER DRAWING
▽ = 0	GENERAL TOLERANCES (UNLESS SPECIFIED)		
▽ = 0	ANGULAR TOL ± 0.5°		
▽ = 0	4 PLACES	±	
▽ = 0	3 PLACES	±	
▽ = 0	2 PLACES	± 0.13	EC NO: 611731 DRWN: ABN 2018/12/20 CHK'D: ABN 2019/02/08 APPR: KJANOTA 2019/02/08
▽ = 0	1 PLACE	± 0.25	INITIAL REVISION: DRWN: NSRIVATSAHS 2017/10/13 APPR: CHIRSCHY 2018/06/28
▽ = 0	0 PLACES	±	DOCUMENT NUMBER 2033879011
▽ = 0	DRAFT WHERE APPLICABLE MUST REMAIN WITHIN DIMENSIONS	THIRD ANGLE PROJECTION	DOC TYPE PSD
▽ = 0		DRAWING	DOC PART 000
		SERIES	REVISION B1
		D-SIZE	MATERIAL NUMBER SEE SHEET 1
		203387	CUSTOMER GENERAL MARKET
			SHEET NUMBER 3 OF 5

LABEL DETAILS



YYDDLXXX = SERIAL NO.:

YY = THE LAST TWO DIGITS OF THE YEAR

DDD = THE DAY OF THE YEAR

L = LOCATION:

1 = USA

2 = MEXICO

3 = CHINA

4 = PHILLIPINES

XXXX = SERIES No. (0000~9999)

NOTES:

1. LABEL REQUIREMENT - ARIAL UNICODE MS FONT. FONT HEIGHT AROUND 2MM. GAP BETWEEN TEXT AND BARCODE 1.5MM MAX. BARCODE HEIGHT AROUND 6MM. BARCODE 128 B.

SYMBOLS	THIS DRAWING CONTAINS INFORMATION THAT IS PROPRIETARY TO MOLEX ELECTRONIC TECHNOLOGIES, LLC AND SHOULD NOT BE USED WITHOUT WRITTEN PERMISSION			<h1 style="margin: 0;">molex</h1>
	DIMENSION UNITS	SCALE	CURRENT REV DESC: SEE REVISION TABLE	
▽ = 0	mm	1:1		
▽ = 0	GENERAL TOLERANCES (UNLESS SPECIFIED)			
▽ = 0	ANGULAR TOL	± 0.5°		
▽ = 0	4 PLACES	±	EC NO: 611731	
▽ = 0	3 PLACES	±	DRWN: ABN 2018/12/20	
▽ = 0	2 PLACES	± 0.13	CHK'D: ABN 2019/02/08	
▽ = 0	1 PLACE	± 0.25	APPR: KJANOTA 2019/02/08	
☒ = 0	0 PLACES	±	INITIAL REVISION:	
■ = 0	DRAFT WHERE APPLICABLE MUST REMAIN WITHIN DIMENSIONS			
▽ = 0	THIRD ANGLE PROJECTION	DRAWING	SERIES	MATERIAL NUMBER
			D-SIZE	203387
			DOCUMENT NUMBER	DOC TYPE
			2033879011	PSD
			DOC PART	REVISION
			000	B1
			CUSTOMER	SHEET NUMBER
			SEE SHEET 1	GENERAL MARKET
				4 OF 5

