

PRODUCT DESCRIPTION CODE :

10131935-YXXXLF

PLATING :   
 RoHS COMPATIBLE, SEE NOTE 3   
 PACKAGING : "A" : TAPE & REEL   
 "U" : TUBE   
 "B" : TUBE WITH CAP   
 TOTAL NUMBER OF POSITIONS 02 TO 25

- 1 = 0.76 μm GOLD ON CONTACT AREA   
 2.00μm MIN MATTE TIN ON TAIL
- 2 = 0.38μm GOLD ON CONTACT AREA   
 2.00μm MIN MATTE TIN ON TAIL
- 3 = 0.20μm GOLD ON CONTACT AREA   
 2.00μm MIN MATTE TIN ON TAIL
- 4 = 0.76 μm GXT ON CONTACT AREA   
 2.00μm MIN MATTE TIN ON TAIL
- 5 = 0.38μm GXT ON CONTACT AREA   
 2.00μm MIN MATTE TIN ON TAIL
- 6 = 0.20μm GXT ON CONTACT AREA   
 2.00μm MIN MATTE TIN ON TAIL
- 9 = 2.54μm MIN MATTE TIN ON CONTACT AREA   
 2.00μm MIN MATTE TIN ON TAIL
- 1.27μm NICKEL MIN UNDERLAYER

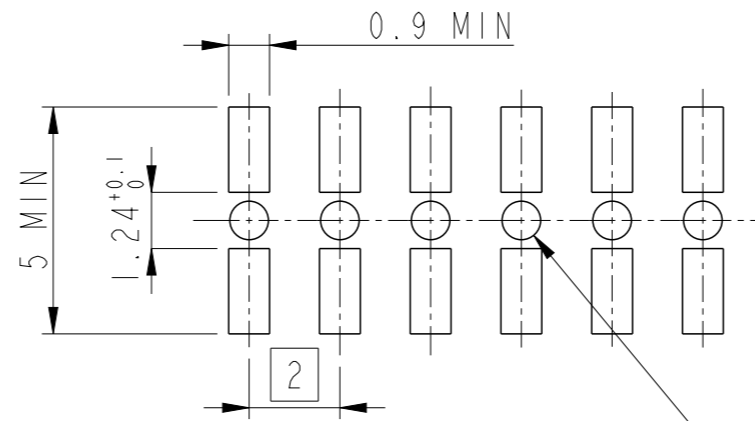
NOTES :

1- MATERIAL   
 HOUSING : HIGH TEMPERATURE GLASS FILLED FLAME   
 RETARDANT PER UL 94 V-0   
 TERMINAL: COPPER ALLOY

2- TO DETERMINE DIMENSIONS :   
 N = NUMBER OF POSITIONS PER ROW   
 EXAMPLE : 8 POS N x 2 = 16mm   
 UP TO N = 12 TOLERANCE : 0   
 -0.10   
 FROM N = 13 TOLERANCE : 0.05   
 -0.10

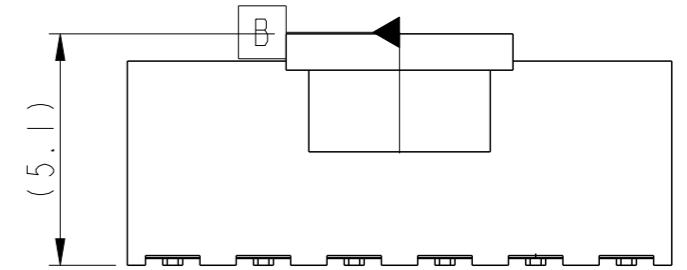
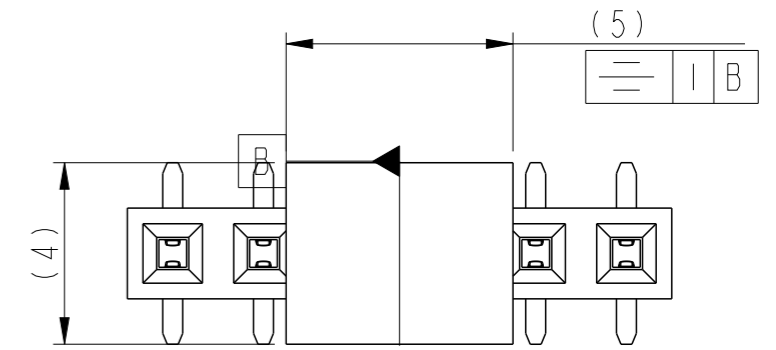
3 - RoHS COMPATIBLE PRODUCT SPECIFICATIONS   
 a - PLATING :   
 "LF" MEANS THE PRODUCT IS LEAD-FREE, 2μm MINIMUM MATTE   
 TIN OVER 1.27μm MINIMUM NICKEL UNDERPLATE   
 b - MANUFACTURING PROCESS COMPATIBILITY   
 THE HOUSING WILL WITHSTAND EXPOSURE TO 260°C PEAK   
 TEMPERATURE FOR 30 SECONDS MAX IN A CONVECTION, INFRA-RED   
 OR VAPOR PHASE OR REFLOW OVEN

c - LABELLING :   
 MEETS PACKAGING SPECS AS PER GS-14-920   
 d - LEGAL STATEMENT : SEE GS-47-0004

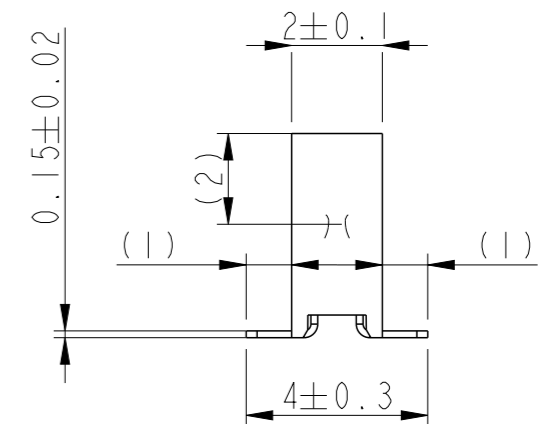
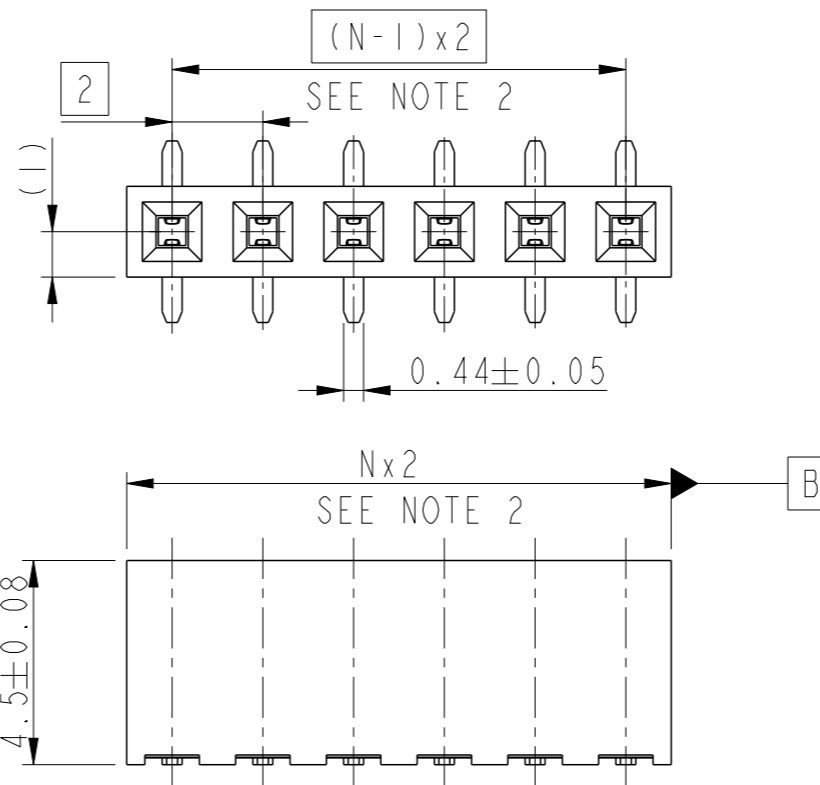


Ø0.85±0.05   
 FOR BOTTOM ENTRY APPLICATION

RECOMMENDED PAD LAYOUT



WITH PICK-UP CAP



spec ref	-	dr	Cyril Jeune	2014/12/02	projection	mm	size	A3	scale	6:1		
tolerance std	ISO 406 ISO 1101	eng	Detouillon, Da	2020/12/19		mm	ecn no	-	rel level	Released		
TOLERANCES UNLESS OTHERWISE SPECIFIED		chr	-	appr							Wollin, Severi	2020/12/18
surface	linear	0.X	±		MINITEK RECEPTACLE 2MM ASSEMBLY VCC SR SMT	dwg no 10131935	rev A	ISO 1302 angular 0° ±°				
		0.XX	±					www.fci.com	cat. no.	-	Product - Customer Drw	sheet 1 of 1
		0.XXX	±									