

5

4

3

2

1

DRAWING NO.

CPMC881-CUST

REVISIONS

OFFICAL RELEASE	
01	03-05-09 Z B T
RELEASE FOR SUPPLIER ALTER	
02	07-27-11 Y G M
INSULATOR MATERIAL WAS PTFE BODY MATERIAL WAS BRASS DIMENSIONS 11.5±0.1 WAS 12.1±0.1; Ø5.6 WAS Ø5.23; Ø6.5 WAS Ø6.22; 15.0±0.3 WAS 14.8 ADDED: CABLE STRIP DIMENSIONS	
03	07-27-11 Y G M

Description: Stright BNC Crimp Plug For RG58 Style Cable

Part No: CPMC881

Application: For Cable RG58 Style

Crimp Tool: 24-9958P

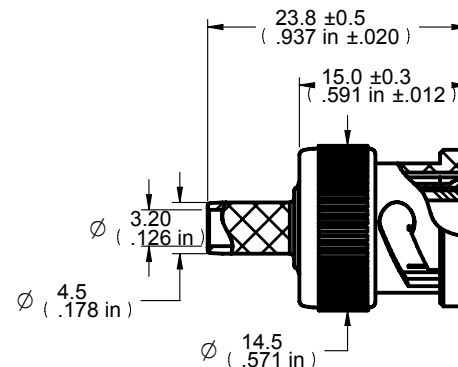
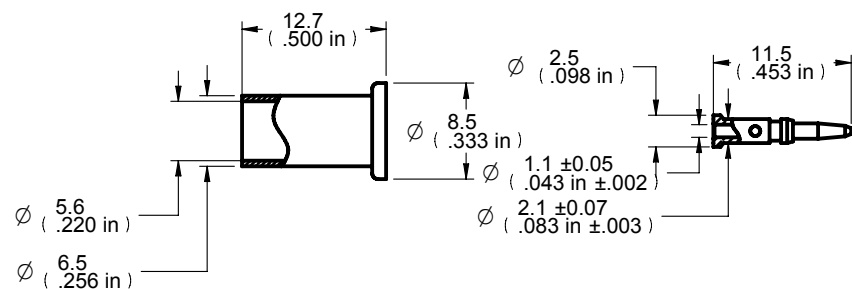
Impedance: 50 Ohms

Fequency Range: 0-4 GHz

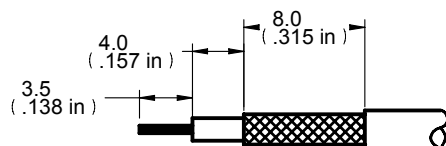
Material: Body Zinc Nickel Plated
 Contact Brass Gold Plated
 Insulator POM
 Crimp Sleeve Brass Nickel Plated
 Coupling Nut Zinc Nickel Plated

RoHS Compliance: Yes

Technical Detail: Refer to Emerson Document P/N 27-0000



DIM OUTLINE



CABLE STRIP DIMENSIONS

CUSTOMER COPY

TOLERANCE UNLESS OTHERWISE SPECIFIED		DRAWN BY	DATE
DECIMALS	mm	YUGE HU	07-27-11
X	± 0.5	CHECKED BY	DATE
X.X	± 0.2	YUGE HU	07-27-11
X.XX	± 0.1	APPROVED BY	DATE
ANGLES	± 0.5°	LIN MA	07-27-11
		U/M	mm

EMERSON Network Power **Connectivity Solutions**

TITLE: STRAIGHT BNC CRIMP PLUG FOR R58 STYLE CABLE

THIS DRAWING WAS PRODUCED BY COMPUTER, DO NOT SCALE DRAWING OR UPDATE MANUALLY.		
SHEET 1 OF 1	DRAWING NO. CPMC881-CUST	SIZE A

5

4

3

2

1