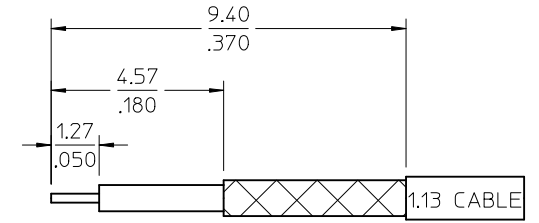
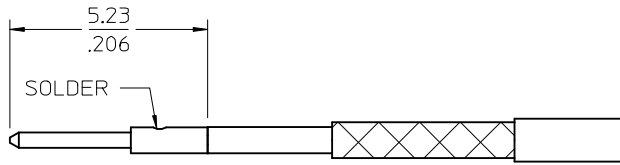
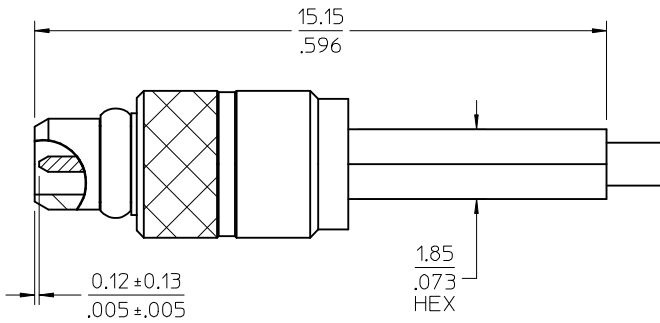
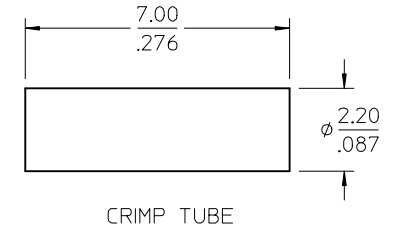
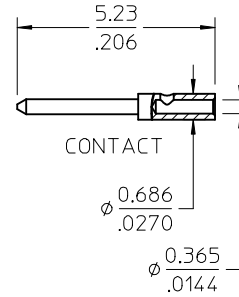
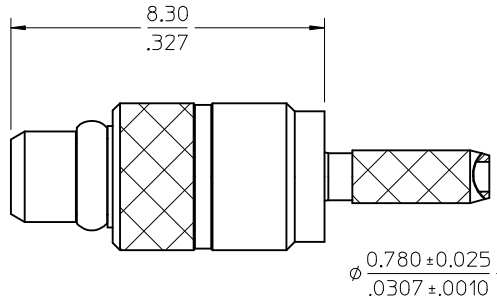
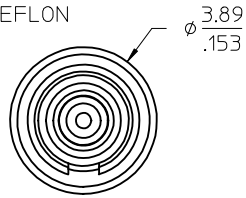
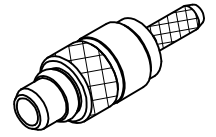


MATERIALS AND FINISHES

BODY, CONTACT, CRIMP TUBE: BRASS  
PLATED GOLD

RING: BERYLLIUM COPPER  
PLATED: GOLD

INSULATOR: TEFLON



73415-2253	BODY,CONTACT,RING,TUBE,(1~3)μ" / BULK PACK
73415-2252	1 PIECE 73415-2251 IN SINGLE BAG WITH LABEL
73415-2251	BODY,RING,TUBE (1~3), CONTACT(10~30)μ" / BULK PACK
73415-2250	PER MILITARY REQUIREMENTS / BULK PACK
PART NO.	PLATING AND PACKING

ORIGINALLY DRAWN: 12/04/2001

PS-89675-1920	PRODUCT SPECIFICATION
CECC-22-340	INTERFACE
SPECIFICATION	DESCRIPTION

CHG: UPDATE VIEW FOR CONTACT φ.365 WAS φ.397	EC NO: URF2013-0440	QUALITY SYMBOLS ▽=0 ▽=0
	DRWN:JWIENER 2013/01/30	
CHKD:SSS 2013/01/30	APPR:JWIENER 2013/01/30	DESCRIPTION
REV	B2	

GENERAL TOLERANCES (UNLESS SPECIFIED)	DIMENSION STYLE	SCALE	DESIGN UNITS	THIRD ANGLE PROJECTION
4 PLACES ± --- ± ---	MM/IN		METRIC	
3 PLACES ± --- ± ---				
2 PLACES ± --- ± ---				
1 PLACE ± --- ± ---				
ANGULAR ± 2 °				
DRAFT WHERE APPLICABLE MUST REMAIN WITHIN DIMENSIONS				

DRAWN BY	DATE	TITLE
JWIENER	2010/02/18	MMCX PLUG ,STR. 50 OHMS FOR 1.13 CABLE MMCX-PC
CHECKED BY	DATE	
SSS	2010/02/18	
APPROVED BY	DATE	
JWIENER	2010/02/18	
MATERIAL NO.	DOCUMENT NO.	SHEET NO.
SEE TABLE	SD-73415-225	1 OF 1
THIS DRAWING CONTAINS INFORMATION THAT IS PROPRIETARY TO MOLEX INCORPORATED AND SHOULD NOT BE USED WITHOUT WRITTEN PERMISSION		