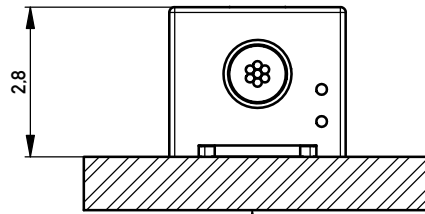
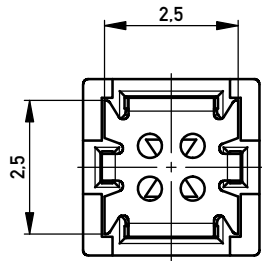
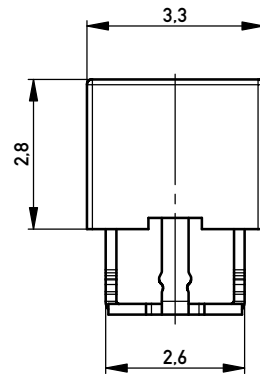
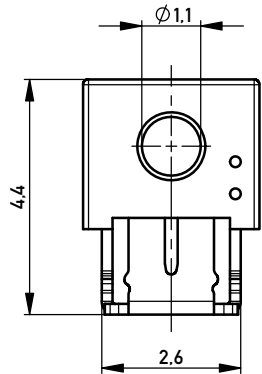
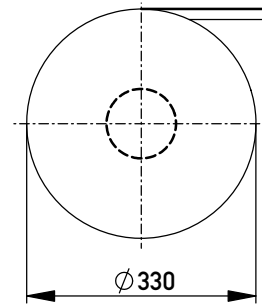


Terminal verpresst
Terminal pressed

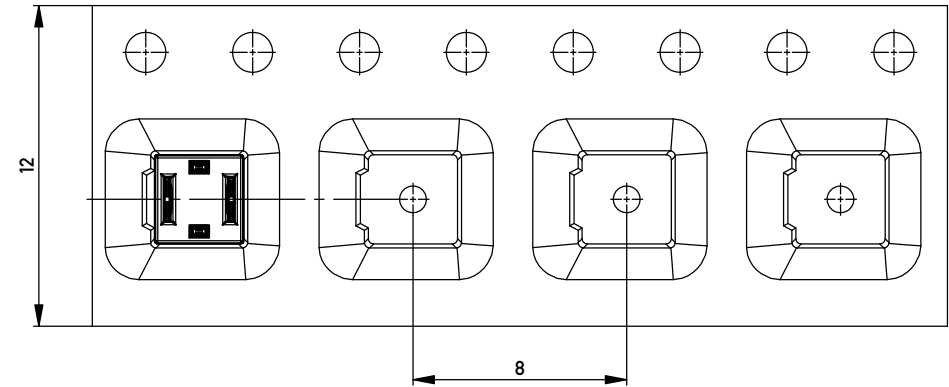
Verpackt im Gurt nach DIN IEC 60286-3
Tape on Reel Packaging according to DIN IEC 60286-3
Verpackungseinheit: 2000 Stück
Packaging unit: 2000 pcs



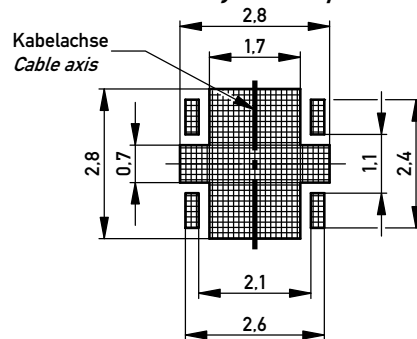
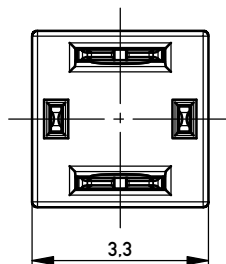
Leiterplatte
PCB



Abspulrichtung - Reel off Direction



Leiterplatten-Layout Vorschlag
PCB-Layout Proposal



*AWG 24/7 - 26/7 D 1,1 ohne Kabelanschlag
*AWG 24/7 - 26/7 D 1,1 without cable stop

Information: Farbe: schwarz color: black	Tolerances	 All Dimensions in mm	Scale	10:1
	Designation Schneidklemmterminal * <i>IDC-Terminal*</i>			
All rights reserved. Only for Information. To ensure that this is the latest version of this drawing, please contact one of the ERNI companies before using.	Subject to modification without prior notice. Drawing will not be updated.		Designation 474337	
			ERNI www.ERNI.com	
a	19.03.2015	Class		IDC-TERM
Index	Date			

Copyright by ERNI GmbH. Proprietary notice pursuant to ISO 9006 to be observed.