

DO NOT SCALE FROM THIS PRINT

DESIGNED & DIMENSIONED IN MILLIMETERS [INCHES]

**SMA-J-C-X-ST-BH4**

GENDER  
-J: JACK

TYPE  
-C: CABLE

TERMINATION  
-BH4: BULKHEAD (MH113 CABLE)

ORIENTATION  
-ST: STRAIGHT

PLATING SPECIFICATION  
-H: HEAVY GOLD (SEE NOTES 7 & 8)  
(SMA-NUT-001-F)  
(SMA-LWAS-001-F)  
(SUB-SMA-J-C-F-ST-BH3)  
(SMA-SKT-004-H)  
(SMA-INS-017)  
(SMA-J-C-F-ST-BH4-CBDY)

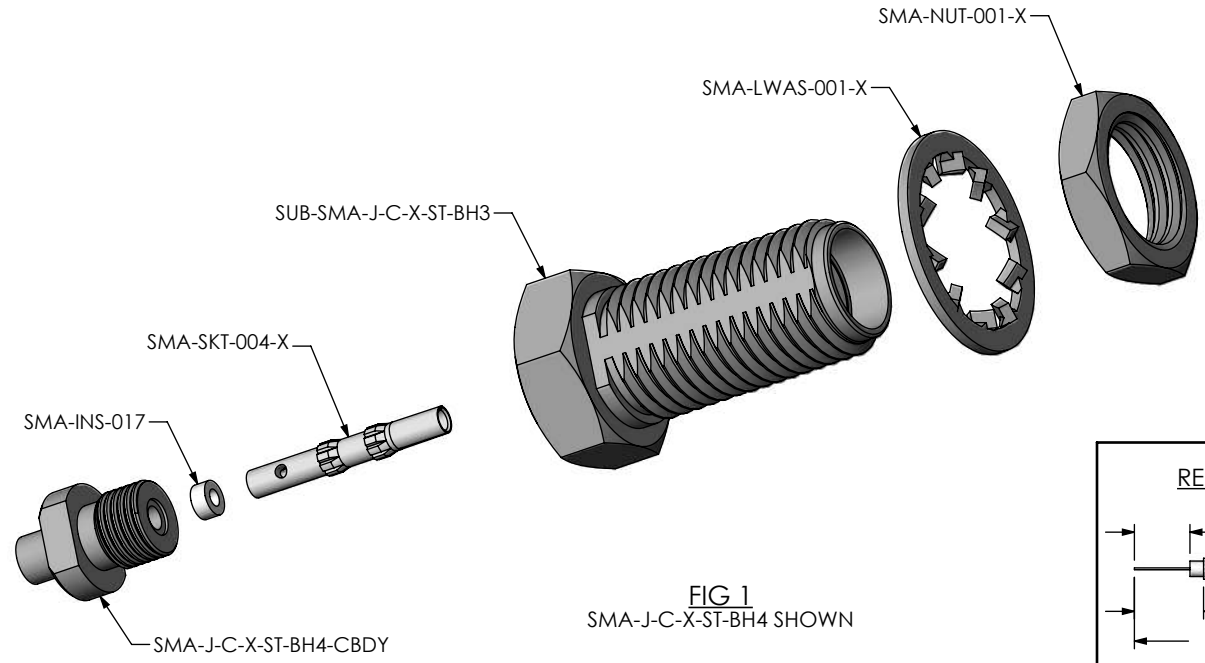
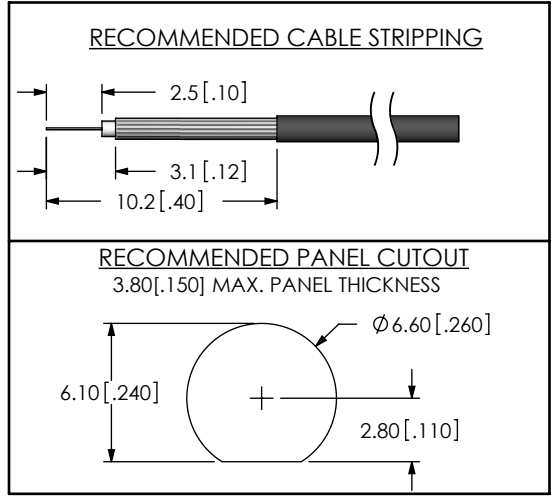


FIG 1  
SMA-J-C-X-ST-BH4 SHOWN



- NOTES:
1.  $\text{\textcircled{C}}$  REPRESENTS A CRITICAL DIMENSION.
  2. CENTER CONTACT PUSHOUT FORCE = 13.35 N [3 LB] MIN.
  3. SEE SHEET 3 FOR TERMINATION INFORMATION.
  4. NOTE DELETED.
  5. PRODUCT TO BE PACKAGED PER PACKAGING STANDARD CO-RF-WI-3040-M.
  6. RoHS COMPLIANT.
  7. PLATING: -F: .00003" MIN GOLD OVER .000050" MIN NICKEL.  
-H: .000030" MIN GOLD OVER .000050" MIN NICKEL.
  8. ASSEMBLY PLATING DESIGNATIONS:  
-H: (CENTER CONTACT)-H  
(OUTER CONTACT) -F  
(REMAINING METAL PARTS) -F

**THIS PRODUCT MANUFACTURED WITH LEAD-FREE PROCESSING**

UNLESS OTHERWISE SPECIFIED, DIMENSIONS ARE IN MILLIMETERS [INCHES]. TOLERANCES ARE:

DECIMALS	ANGLES
.X: $\pm 0.3$ [.01]	2°
.XX: $\pm 0.13$ [.005]	
.XXX: $\pm 0.051$ [.0020]	

**PROPRIETARY NOTE**  
THIS DOCUMENT CONTAINS INFORMATION CONFIDENTIAL AND PROPRIETARY TO SAMTEC, INC. AND SHALL NOT BE REPRODUCED OR TRANSFERRED TO OTHER DOCUMENTS OR DISCLOSED TO OTHERS OR USED FOR ANY PURPOSE OTHER THAN THAT WHICH IT WAS OBTAINED WITHOUT THE EXPRESSED WRITTEN CONSENT OF SAMTEC, INC.



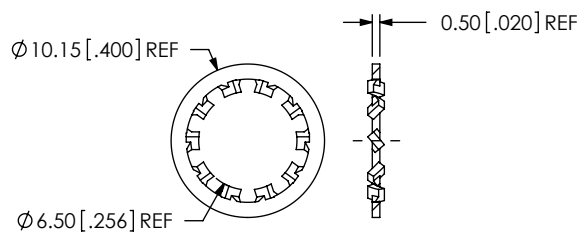
520 PARK EAST BLVD, NEW ALBANY, IN 47150  
PHONE: 812-944-6733 FAX: 812-948-5047  
e-Mail: info@SAMTEC.com code: 55322

**MATERIAL:** DO NOT SCALE DRAWING SHEET SCALE: 1:0.333333  
SHELL, NUT, WASHER: BRASS  
CONTACT: COPPER ALLOY  
DIELECTRIC: PTFE

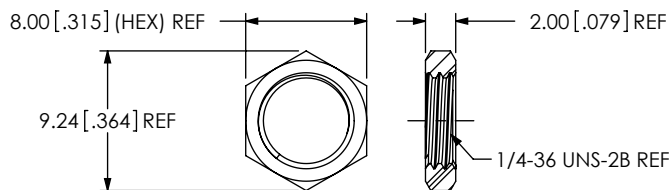
DESCRIPTION:  
SMA STR JACK BULKHEAD, MH113- 50 OHM

DWG. NO. SMA-J-C-X-ST-BH4

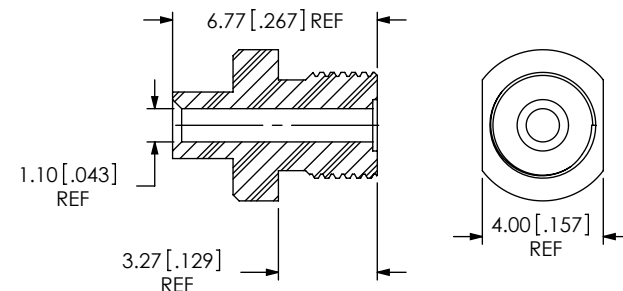
REVISION H



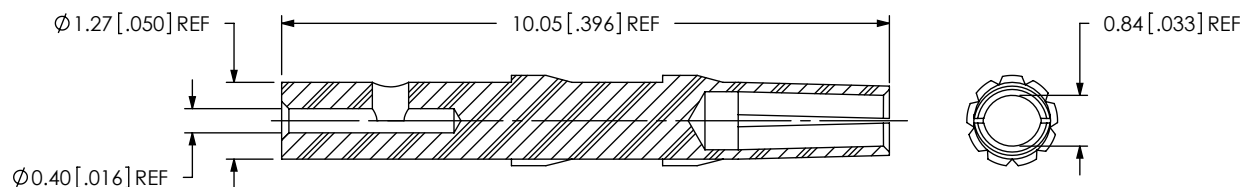
SAMTEC PART NUMBER	ITEM
SMA-LWAS-001-X	LOCK WASHER



SAMTEC PART NUMBER	ITEM
SMA-NUT-001-X	HEX NUT

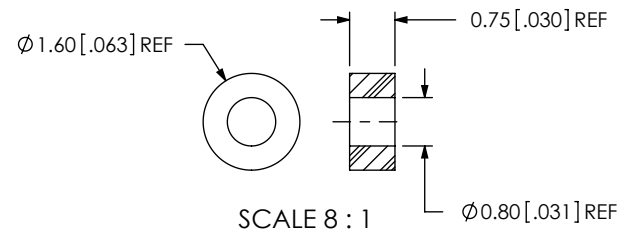


SAMTEC PART NUMBER	ITEM
SMA-J-C-X-ST-BH4-CBDY	REAR THREADED BODY



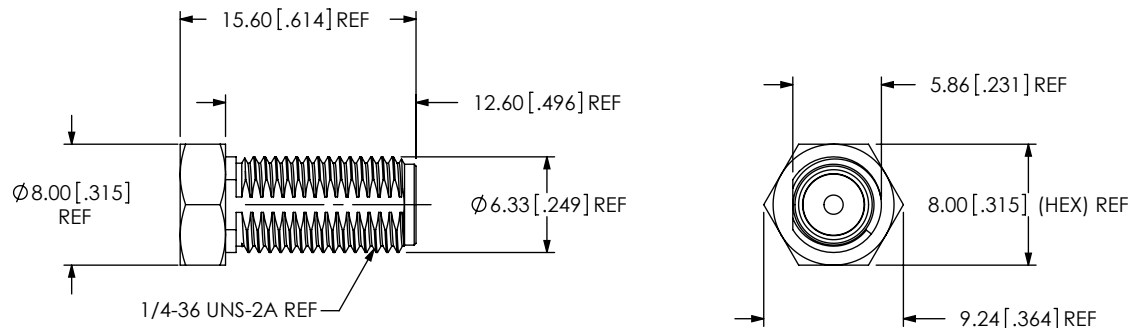
SCALE 8 : 1

SAMTEC PART NUMBER	ITEM
SMA-SKT-004-X	SOCKET



SCALE 8 : 1

SAMTEC PART NUMBER	ITEM
SMA-INS-017	INSULATOR



SAMTEC PART NUMBER	ITEM
SUB-SMA-J-C-X-ST-BH3	SUB ASSEMBLY

F:\DWG\MISC\MKTG\SMA-J-C-X-ST-BH4-MKT.SLDDRW

PROPRIETARY NOTE

THIS DOCUMENT CONTAINS INFORMATION CONFIDENTIAL AND PROPRIETARY TO SAMTEC, INC. AND SHALL NOT BE REPRODUCED OR TRANSFERRED TO OTHER DOCUMENTS OR DISCLOSED TO OTHERS OR USED FOR ANY PURPOSE OTHER THAN THAT WHICH IT WAS OBTAINED WITHOUT THE EXPRESSED WRITTEN CONSENT OF SAMTEC, INC.

DO NOT SCALE DRAWING

SHEET SCALE: 2:1

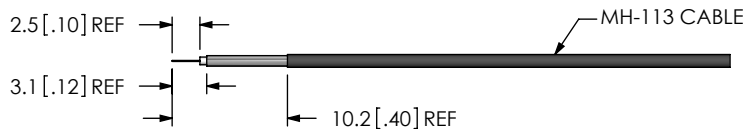
**samtec**

520 PARK EAST BLVD, NEW ALBANY, IN 47150  
PHONE: 812-944-6733 FAX: 812-948-5047  
e-Mail: info@SAMTEC.com code: 55322

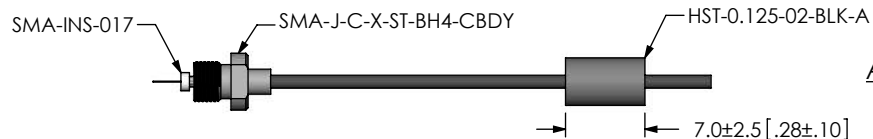
DESCRIPTION:  
SMA STR JACK BULKHEAD, MH113- 50 OHM

DWG. NO.  
**SMA-J-C-X-ST-BH4**

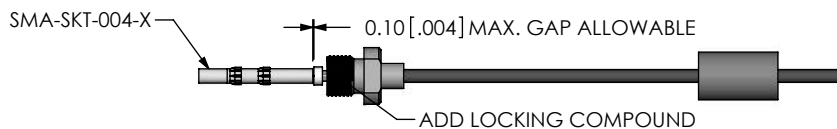
BY: R MUSSER 01/28/2008 SHEET 2 OF 3



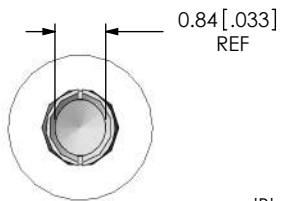
STRIP AND TIN INNER AND OUTER CONDUCTOR



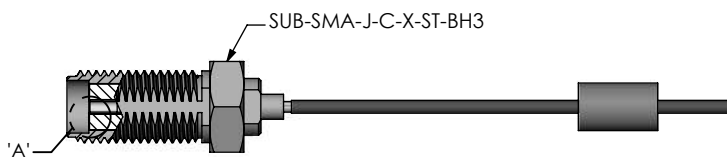
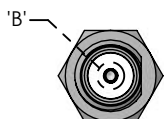
ADD HEAT SHRINK TUBE, REAR THREADED BODY AND INSULATOR



SOLDER SIGNAL SOCKET AND APPLY LOCTITE 680 TO THREADS

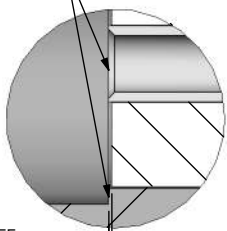


DETAIL 'B' SCALE 8 : 1



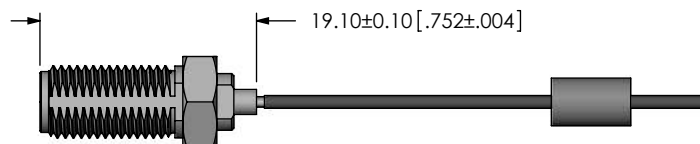
ADD SUB-SMA-J-C-X-ST-BH3 & TIGHTEN REAR-THREADED BODY TO 10 IN-LBS

TIP OF CONTACT TO BE FLUSH WITH REFERENCE PLANE OR RECESSED 0.10 [.004] MAX.

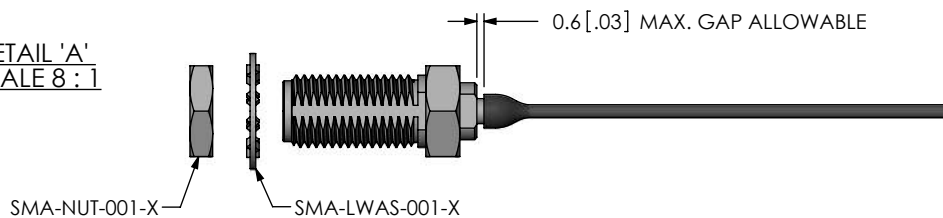


0.05 [.002] REF (TO INSULATOR) REFERENCE PLANE

DETAIL 'A' SCALE 8 : 1



SOLDER SHIELD



APPLY HEAT SHRINK TUBING

F:\DWG\MISC\MKTG\SMA-J-C-X-ST-BH4-MKT.SLDDRW

**PROPRIETARY NOTE**  
THIS DOCUMENT CONTAINS INFORMATION CONFIDENTIAL AND PROPRIETARY TO SAMTEC, INC. AND SHALL NOT BE REPRODUCED OR TRANSFERRED TO OTHER DOCUMENTS OR DISCLOSED TO OTHERS OR USED FOR ANY PURPOSE OTHER THAN THAT WHICH IT WAS OBTAINED WITHOUT THE EXPRESSED WRITTEN CONSENT OF SAMTEC, INC.



520 PARK EAST BLVD, NEW ALBANY, IN 47150  
PHONE: 812-944-6733 FAX: 812-948-5047  
e-Mail: info@SAMTEC.com code: 55322

DO NOT SCALE DRAWING

SHEET SCALE: 1.5:1

DESCRIPTION: SMA STR JACK BULKHEAD, MH113- 50 OHM

DWG. NO. SMA-J-C-X-ST-BH4

BY: R MUSSER 01/28/2008 SHEET 3 OF 3

ASSEMBLY OPERATION	START-UP INSPECTION INSPECTED CODE A	IN-PROCESS INSPECTION INSPECTED CODE B
SOLDERING		C1
ASSEMBLY		C2