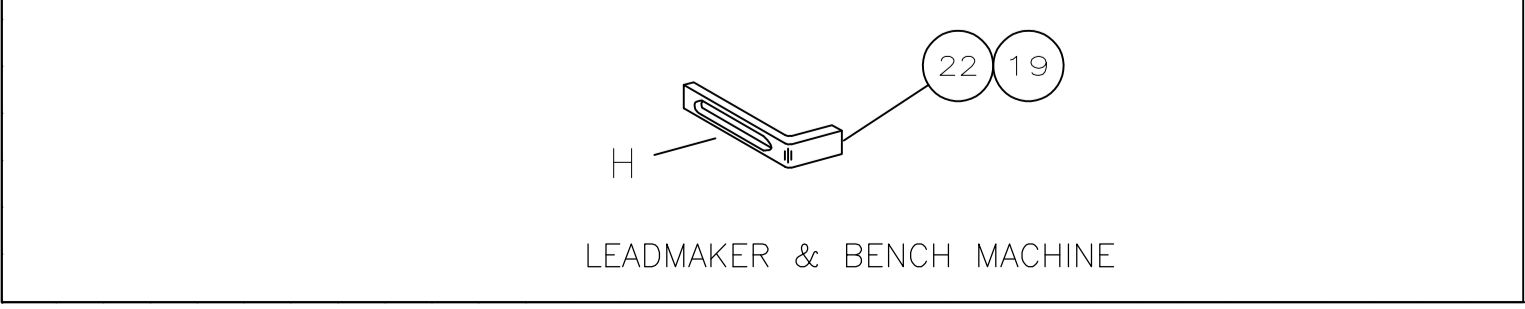
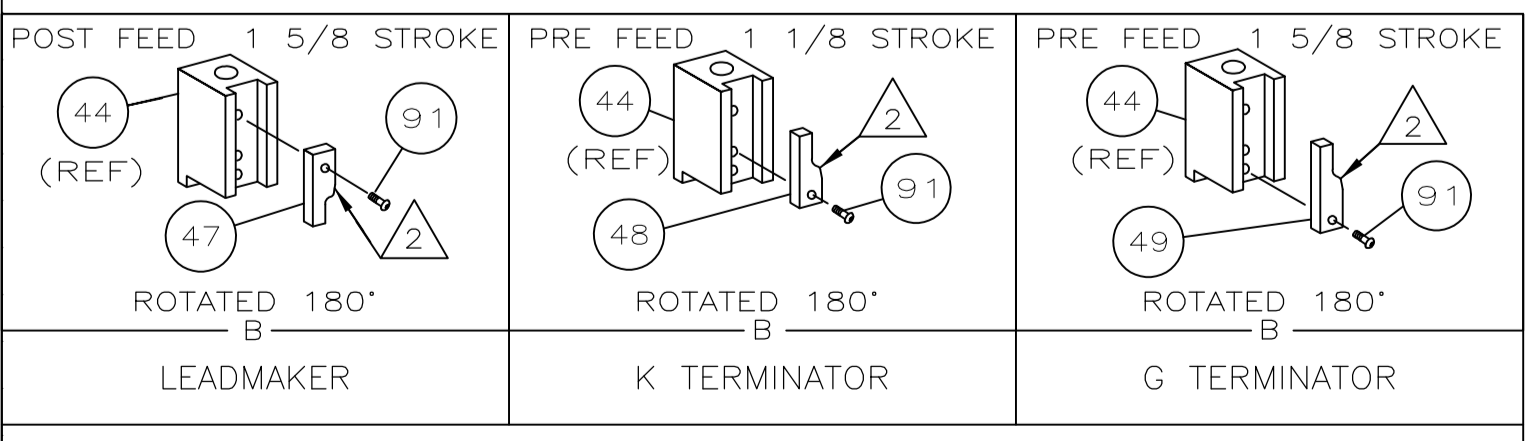
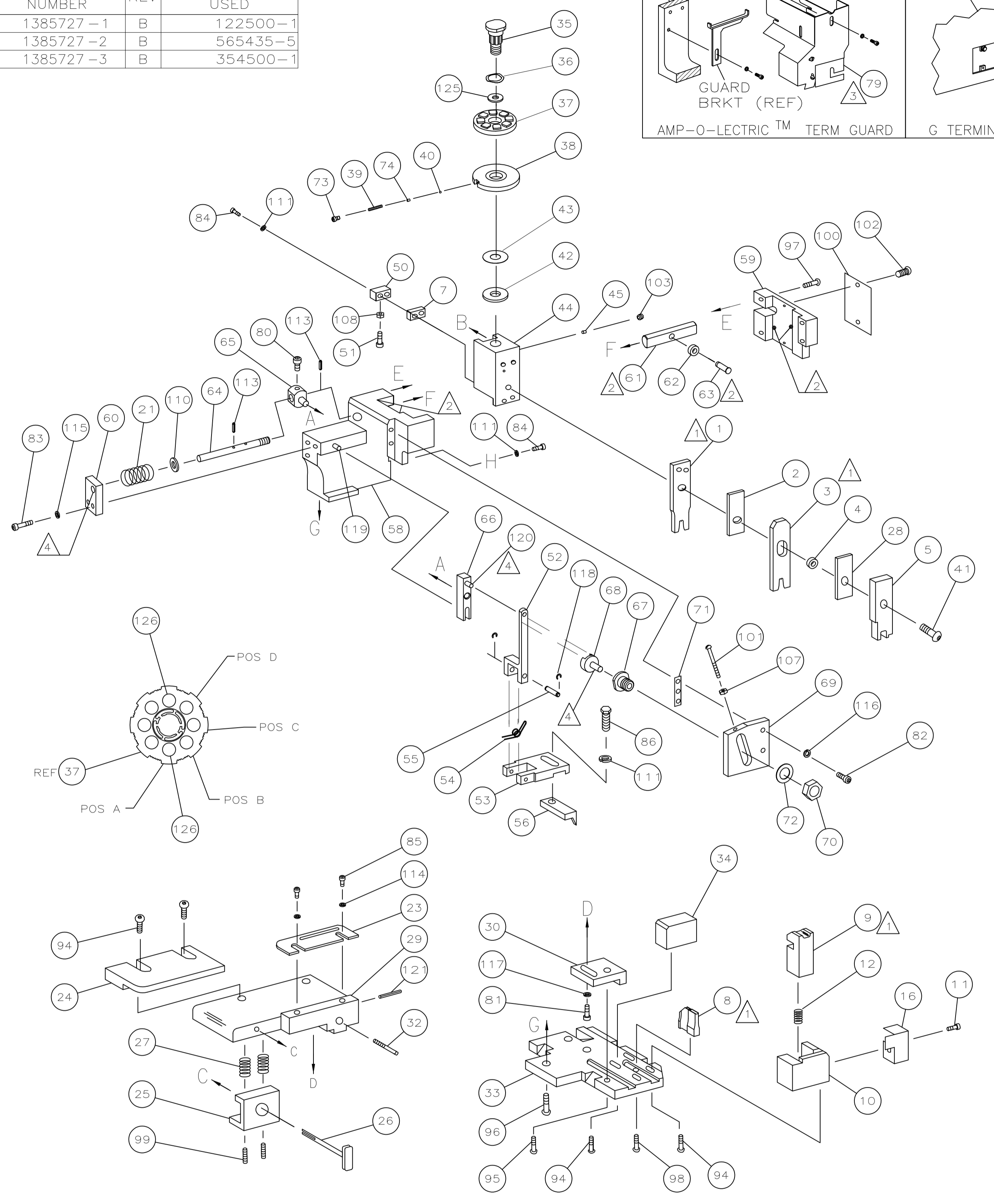
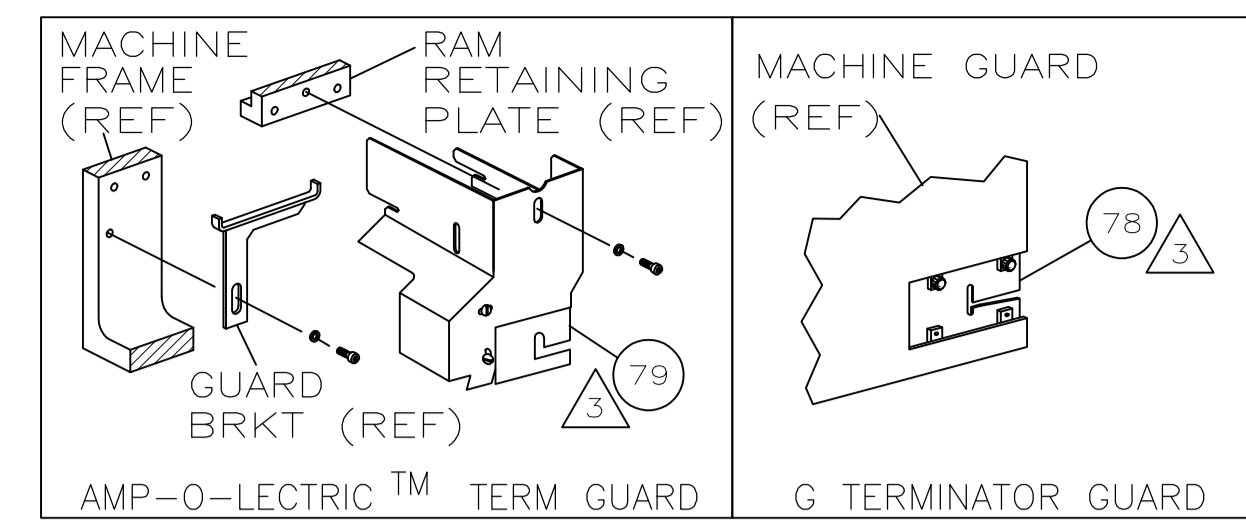


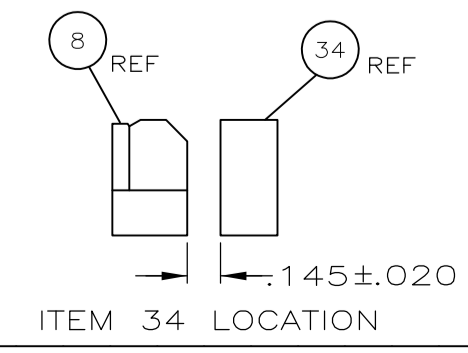
Table with 3 columns: PART NUMBER, REV, FIRST USED. Rows include 1385727-1 B 122500-1, 1385727-2 B 565435-5, 1385727-3 B 354500-1.



- 1 RECOMMENDED SPARE PARTS.
2 GREASE LIGHTLY.
3 GUARD MUST BE IN PLACE WHEN OPERATING APPLICATOR IN A BENCH MACHINE.
4 LUBRICATE DAILY USING NO. 20 MACHINE OIL.
5. ITEMS WITH QTY OF REF SPECIFIED (EXCEPT ITEMS 78 AND 79) ARE USED ON ITEM 46.
6 SEE DRAWING 1456216

Terminal Name: Automotive Socket Contact. Table with columns: AMP TERMINAL, AMP CRIMP SPECS, WIRE SIZE, CRIMP SIZE, TYPE, RANGE, WIRE STRIP LENGTH, TERM APPL SPEC, FEED, APPL INSTRUCTION, SET UP GAGE, LAYOUT.

Parts List table with columns: QTY REQD PER ASSY, PART NO, DESCRIPTION, ITEM NO. Includes items like PIN, WIRE DISC, WASHER, FLAT PRECISION, GENERAL INSTRUCTION PACKAGE, SF APPL INST 408-8040, etc.



Revisions table with columns: REV, LTR, ECR, DESCRIPTION, DATE, DWN, APVD. Includes revision B2 with description ECR-09-006210 dated 3-2009.

Table with 3 columns: REV, DESCRIPTION, FEED. Rows include LEADMAKER MECH POST FEED, BENCH MODEL K MECH PRE FEED, BENCH MODEL G MECH PRE FEED.

Main Parts List table with columns: QTY REQD PER ASSY, PART NO, DESCRIPTION, ITEM NO. Includes items like NUT, HEX(1/2-20), PLATE, ADJUSTMENT, SHAFT, PIVOT, BUSHING, LEVER, INTERMEDIATE, BLOCK, PIVOT, SCREW, ADJ FEED ROD, PIN, CAM ROLLER, ROLLER, CAM, ROD, FEED, GUIDE, FEED ROD, CAP, RAM, HOUSING, PAWL, FEED, PIN, FEED FINGER, SPRING, FEED FINGER, HOLDER, FEED FINGER, LEVER, TERMINAL FEED ARM, BUMPER, HOLDDOWN, SPACER, TONKER, CAM, PRE-FEED 1 5/8 ST, CAM, PRE-FEED 1 1/8 ST, CAM, POST-FEED 1 5/8 ST, APPLICATOR, BASIC (SUBASSY), PLUG, NYLON, RAM, WASHER, LAMINATED, WASHER, RAM, BOLT, CRIMPER(5/16x1.00), BALL, STEEL, SPRING, COMPRESSION, DISC, INSULATION, WIRE DISC, PLASTIC, WASHER, SPRING, POST, RAM, SUPPORT, TERMINAL, PLATE, BASE, SCREW, ADJUSTMENT, BLOCK, STRIP GUIDE ADJ, PLATE, STRIP GUIDE, SPACER, FRONT SHEAR DEP, SPRING, DRAG, LEVER, DRAG RELEASE, DRAG, TERMINAL, GUIDE, STRIP (REAR), GUIDE, STRIP (FRONT), STRIPPER, SPRING, FEED RETURN, STRIPPER, GUARD, CHIP, FRONT, SPRING, SHEAR, STOP, SHEAR, HOLDER, SHEAR (FRONT), SHEAR, FLOAT (FRONT), ANVIL, SPACER, DEPRESSOR (REAR), DEPRESSOR, SHEAR (FRONT), SPACER, BLOCK CRIMPER, CRIMPER, INSULATION, SPACER, CRIMPER, CRIMPER, WIRE.

Controlled Document header with fields for dimensions, tolerances, material, finish, weight, and customer drawing information. Includes Tyco Electronics logo and drawing number A1 00779.